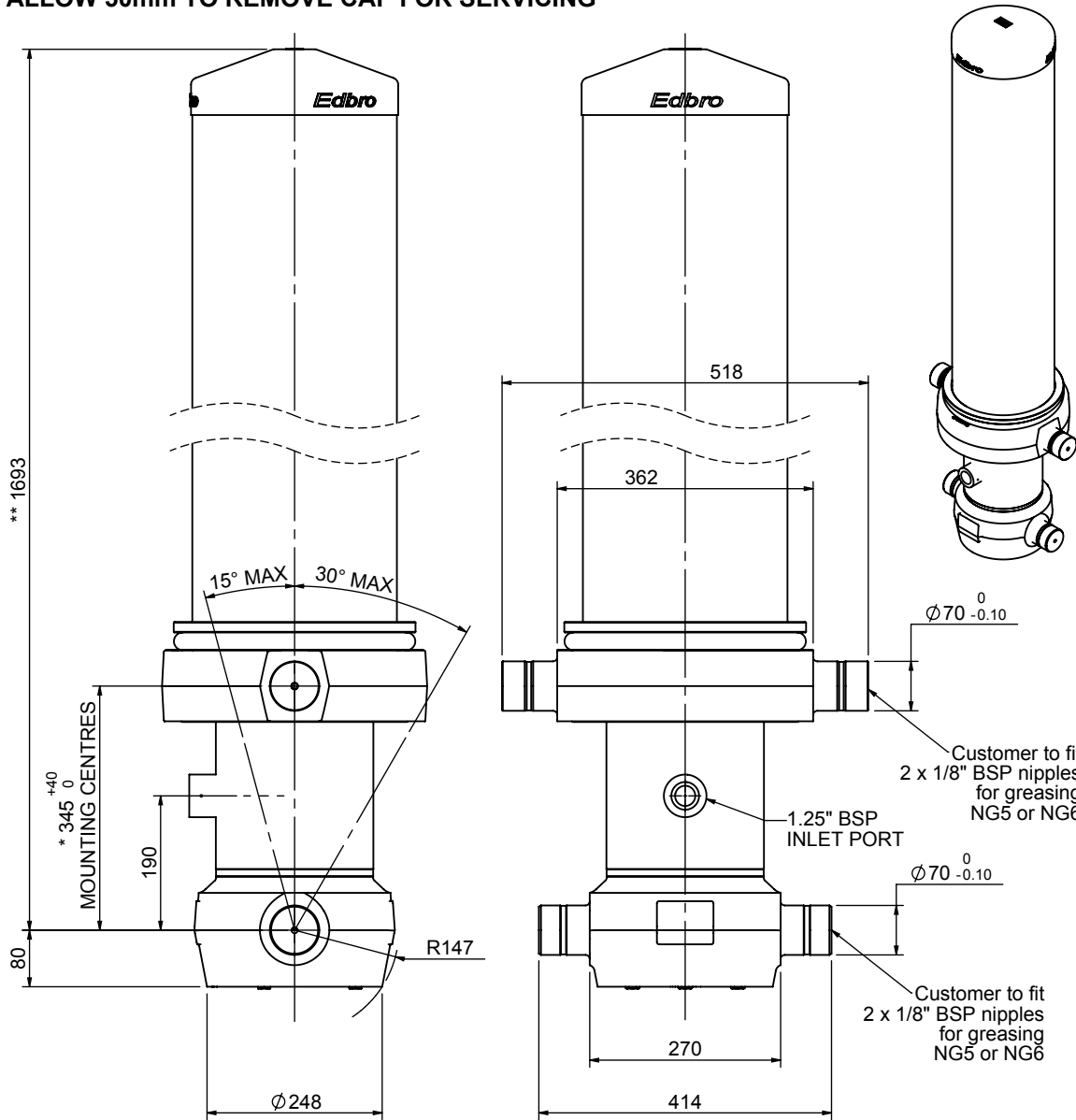


Cylinder 5 stage front end with outer cover

****ALLOW 50mm TO REMOVE CAP FOR SERVICING**

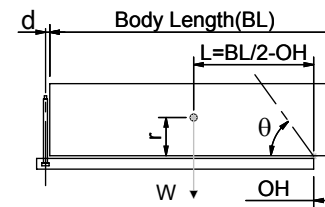


*Includes 11mm Pull Out.

CS190056928B19A11

SPECIFICATION		TIPPING CAPACITY : 54-75 TONNES***		
Stage	Diameter	Length	Stroke	Swept Volume
OUTER COVER	289	1285	-	-
0	223	1628	-	-
1	198	1590	1353	42
2	176	1590	1377	34
3	155	1590	1387	26
4	136	1590	1397	20
5	117	1590	1412	15
Total (+5/-10)			6926	137
Final stroke reduced by	0	Priming Volume		27
Cylinder Mass (Kg)	394	Total Volume (Litres)		164
Maximum Pressure (Bar)	190	Max. first stage thrust		350 KN

***TIPPING CAPACITY AT WORKING PRESSURE



BODY LENGTH (BL)						OH
8250	8750	9250				
61	49°	57	46°	54	44°	150
67	51°	62	48°	58	45°	450
75	54°	68	50°	63	47°	750

d = 229; r = 900; Working Pressure 175 bar

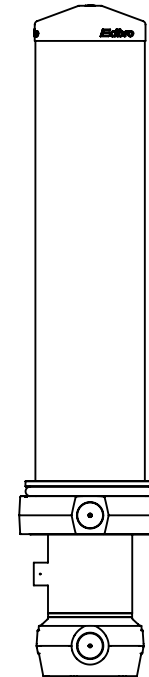
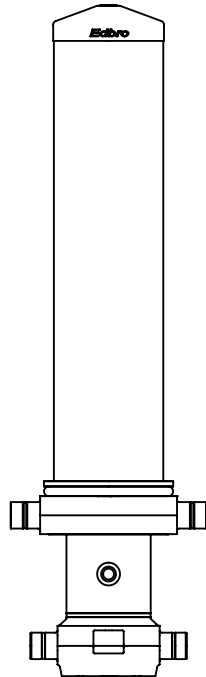
For guidance only;

Higher working pressures and tipping capacities may be possible.

To check your application email - applications@edbro.co.uk

NOTES

1. This cylinder is for lifting purposes only and side load conditions should be avoided
2. Cylinder is painted in primer paint to RAL5013
3. Refer to www.edbro.com for:-
 - Bracket details
 - Installation instructions that must be observed
 - Correct oil selection
 - An explanation of tipping capacity



CS190056928B19A11