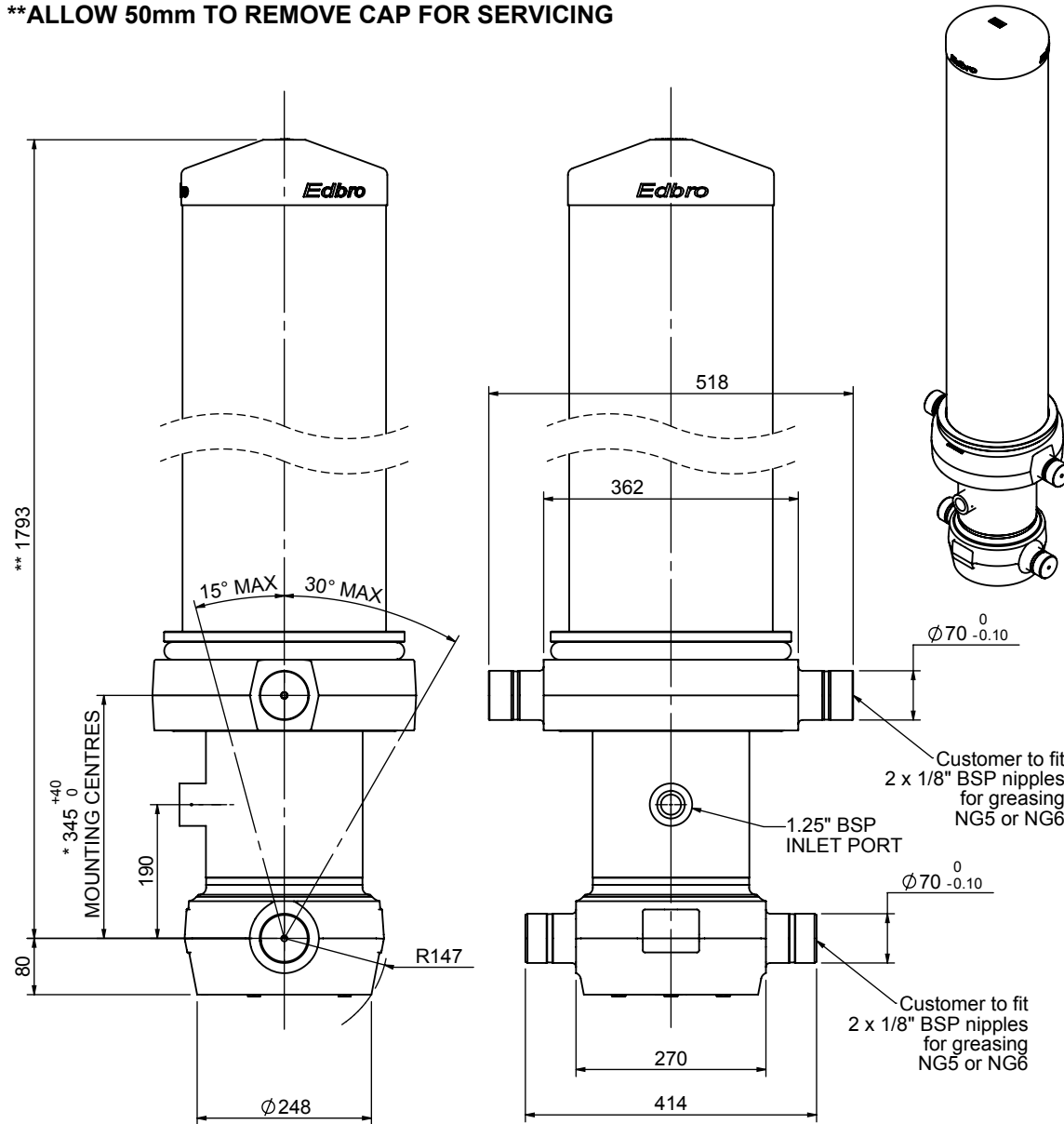


Cylinder 5 stage front end with outer cover

****ALLOW 50mm TO REMOVE CAP FOR SERVICING**

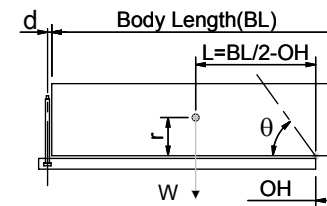


*Includes 11mm Pull Out.

CS190057428B19A11

SPECIFICATION		TIPPING CAPACITY : 53-69 TONNES***		
Stage	Diameter	Length	Stroke	Swept Volume
OUTER COVER	289	1385	-	-
0	223	1728	-	-
1	198	1690	1453	45
2	176	1690	1477	36
3	155	1690	1487	28
4	136	1690	1497	22
5	117	1690	1512	16
		Total (+5/-10)	7426	147
Final stroke reduced by	0	Priming Volume		29
Cylinder Mass (Kg)	412	Total Volume (Litres)		176
Maximum Pressure (Bar)	190	Max. first stage thrust		350 KN

***TIPPING CAPACITY AT WORKING PRESSURE



BODY LENGTH (BL)						OH
9000	9500	10000				
58	48°	55	46°	53	43°	150
63	50°	60	47°	57	45°	450
69	52°	65	49°	61	46°	750

$d = 229$; $r = 900$; Working Pressure 175 bar

For guidance only;

Higher working pressures and tipping capacities may be possible.

To check your application email - applications@edbro.co.uk

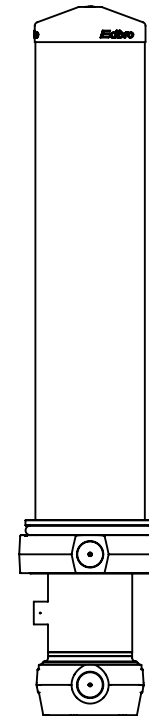
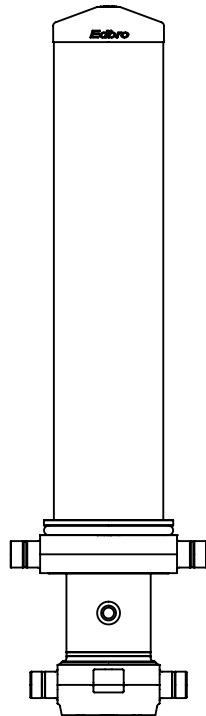
NOTES

1. This cylinder is for lifting purposes only and side load conditions should be avoided
2. Cylinder is painted in primer paint to RAL5013
3. Refer to www.edbro.com for:-
 - Bracket details
 - Installation instructions that must be observed
 - Correct oil selection
 - An explanation of tipping capacity

Edbro
SETTING THE INDUSTRY STANDARD

Edbro plc
Nelson Street, Bolton, England, BL3 2JJ
Tel +44 (0) 1204 528888 Fax +44 (0) 1204 531957
Email: postmaster@edbro.com Web: www.edbro.com

Technical Specifications are subject to change without notice
Date Created/Updated: 05 September 2012
Refer www.edbro.com to confirm latest specification
All dimensions are in 'mm', unless otherwise stated



CS190057428B19A11