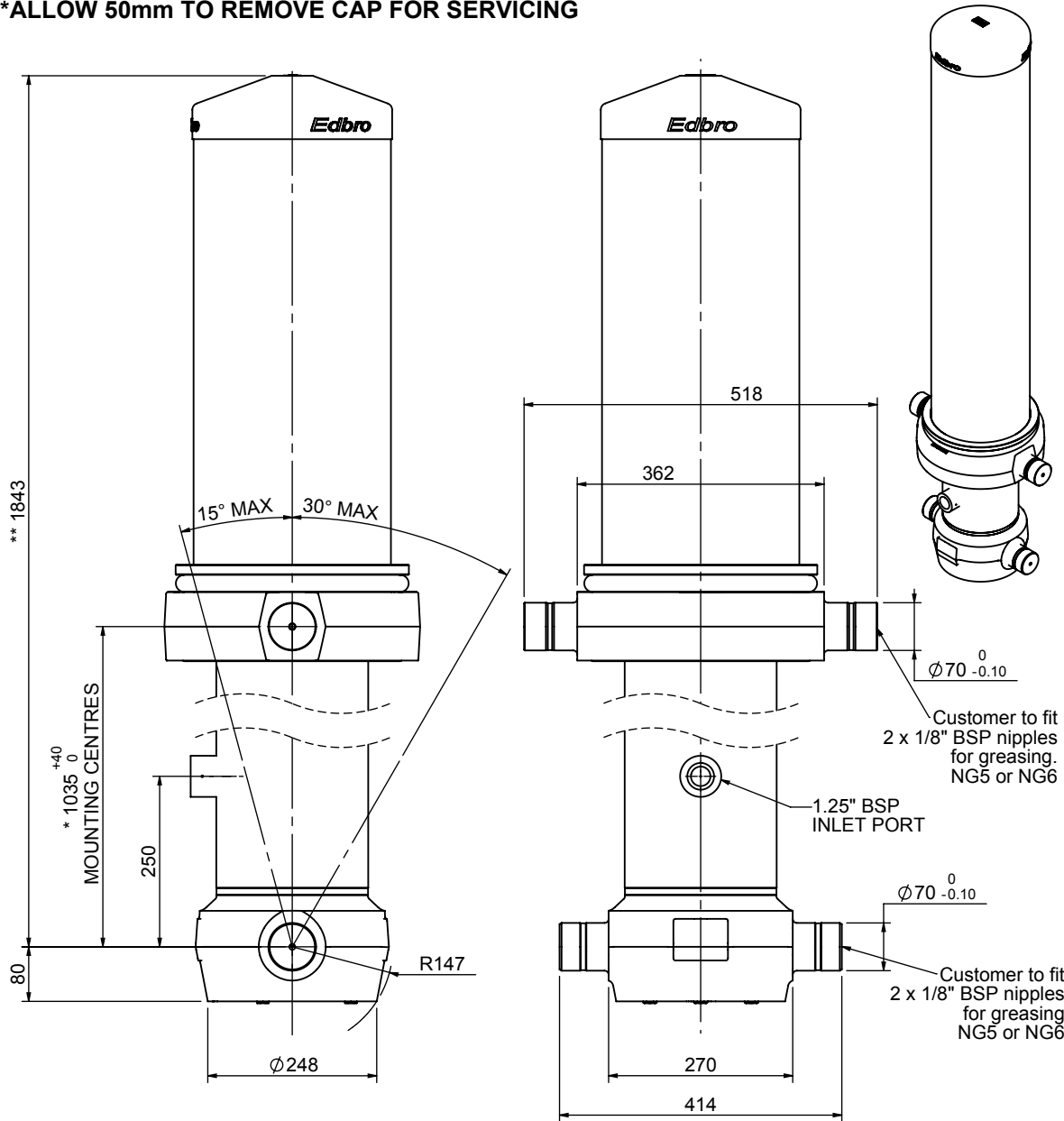


Cylinder 5 stage front end with outer cover

****ALLOW 50mm TO REMOVE CAP FOR SERVICING**

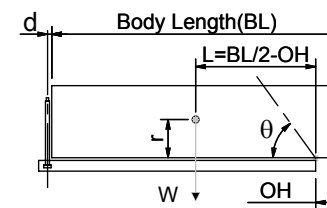


*Includes 11mm Pull Out.

CS190057678B25A15

SPECIFICATION		TIPPING CAPACITY : 42-55 TONNES***		
Stage	Diameter	Length	Stroke	Swept Volume
OUTER COVER	289	745	-	-
0	223	1778	-	-
1	198	1740	1503	46
2	176	1740	1527	37
3	155	1740	1537	29
4	136	1740	1547	22
5	117	1740	1562	17
Total (+5/-10)			7676	151
Final stroke reduced by	0	Priming Volume		30
Cylinder Mass (Kg)	398	Total Volume (Litres)		181
Maximum Pressure (Bar)	190	Max. first stage thrust		350 KN

***TIPPING CAPACITY AT WORKING PRESSURE



BODY LENGTH (BL)						OH
9000	9500	10000				
46	51°	43	48°	42	45°	150
50	53°	47	49°	44	47°	450
55	55°	51	51°	48	48°	750

d = 229; r = 900; Working Pressure 135 bar

For guidance only;

Higher working pressures and tipping capacities may be possible.

To check your application email - applications@edbro.co.uk

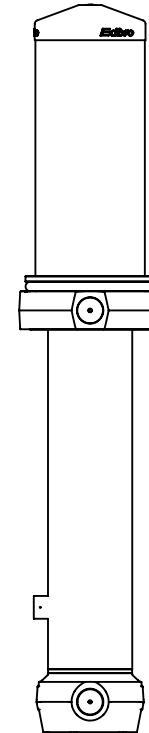
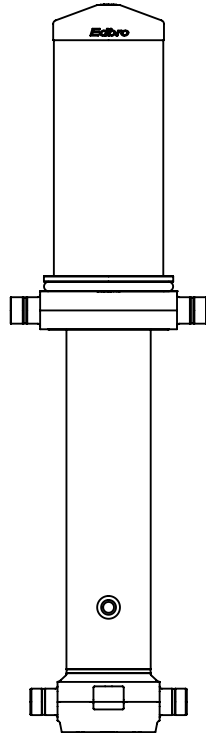
NOTES

1. This cylinder is for lifting purposes only and side load conditions should be avoided
2. Cylinder is painted in primer paint to RAL5013
3. Refer to www.edbro.com for:-
 - Bracket details
 - Installation instructions that must be observed
 - Correct oil selection
 - An explanation of tipping capacity



Edbro plc
 Nelson Street, Bolton, England, BL3 2JJ
 Tel +44 (0) 1204 528888 Fax +44 (0) 1204 531957
 Email: postmaster@edbro.com Web: www.edbro.com

Technical Specifications are subject to change without notice
 Date Created/Updated: 23 August 2012
 Refer www.edbro.com to confirm latest specification
 All dimensions are in 'mm', unless otherwise stated



CS190057678B25A15