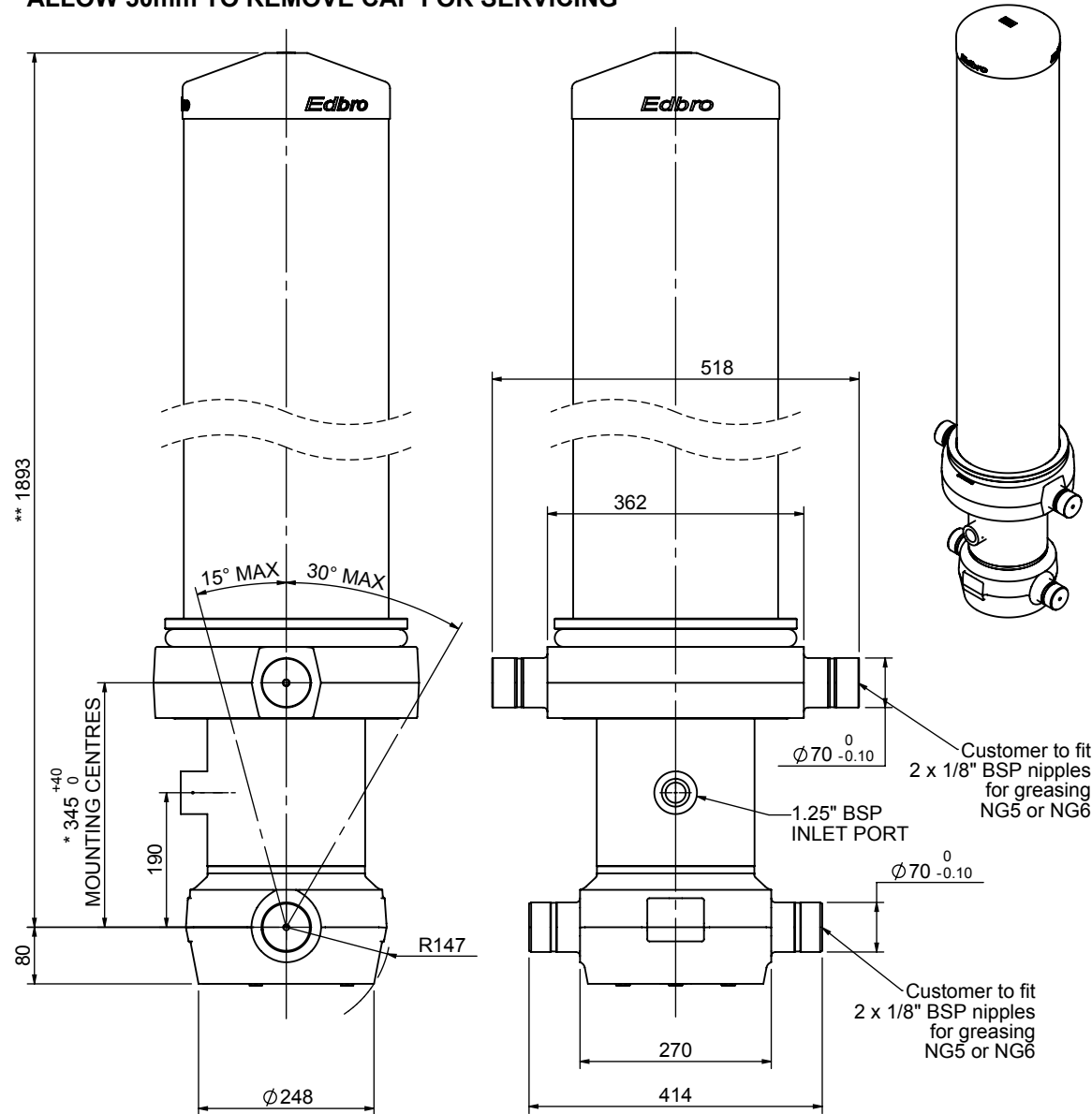


Cylinder 5 stage front end with outer cover

****ALLOW 50mm TO REMOVE CAP FOR SERVICING**

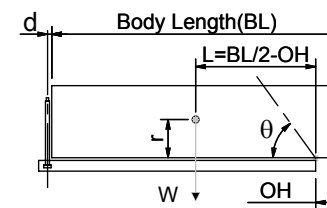


*Includes 11mm Pull Out.

CS190057928B19A11

SPECIFICATION		TIPPING CAPACITY : 53-68 TONNES***		
Stage	Diameter	Length	Stroke	Swept Volume
OUTER COVER	289	1485	-	-
0	223	1828	-	-
1	198	1790	1553	48
2	176	1790	1577	38
3	155	1790	1587	30
4	136	1790	1597	23
5	117	1790	1612	17
Total (+5/-10)			7926	156
Final stroke reduced by	0	Priming Volume		31
Cylinder Mass (Kg)	431	Total Volume (Litres)		187
Maximum Pressure (Bar)	190	Max. first stage thrust		350 KN

***TIPPING CAPACITY AT WORKING PRESSURE



BODY LENGTH (BL)						OH
9500	10000	10500				
58	49°	55	46°	53	44°	150
63	51°	59	48°	56	46°	450
68	53°	64	50°	60	47°	750

d = 229; r = 900; Working Pressure 175 bar

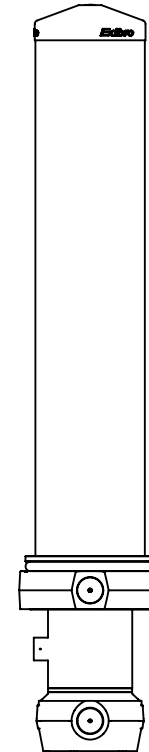
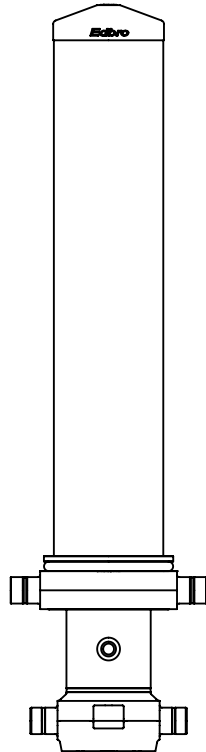
Tipping angle (θ)
Body + payload mass, W (tonne)

For guidance only;

Higher working pressures and tipping capacities may be possible.
To check your application email - applications@edbro.co.uk

NOTES

1. This cylinder is for lifting purposes only and side load conditions should be avoided
2. Cylinder is painted in primer paint to RAL5013
3. Refer to www.edbro.com for:-
 - Bracket details
 - Installation instructions that must be observed
 - Correct oil selection
 - An explanation of tipping capacity



CS190057928B19A11