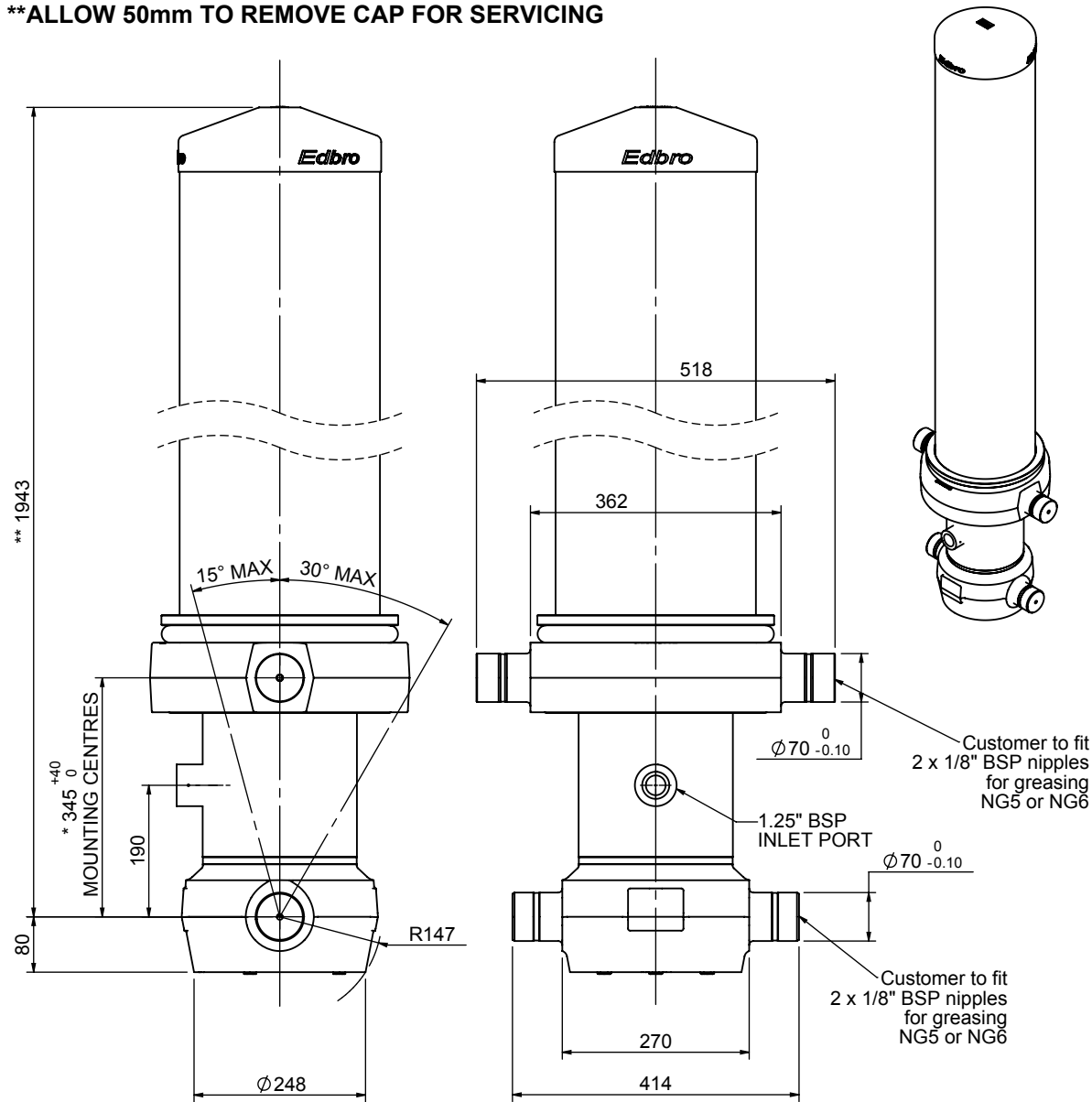


# Cylinder 5 stage front end with outer cover

**\*\*ALLOW 50mm TO REMOVE CAP FOR SERVICING**

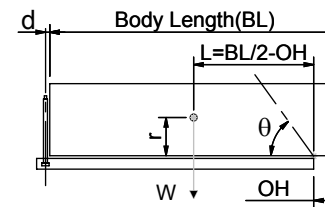


\*Includes 11mm Pull Out.

# CS190058178B19A11

SPECIFICATION		TIPPING CAPACITY : 53-68 TONNES***		
Stage	Diameter	Length	Stroke	Swept Volume
OUTER COVER	289	1535	-	-
0	223	1878	-	-
1	198	1840	1603	49
2	176	1840	1627	40
3	155	1840	1637	31
4	136	1840	1647	24
5	117	1840	1662	18
Total (+5/-10)			8176	162
Final stroke reduced by	0	Priming Volume		32
Cylinder Mass (Kg)	441	Total Volume (Litres)		194
Maximum Pressure (Bar)	190	Max. first stage thrust		350 KN

### \*\*\*TIPPING CAPACITY AT WORKING PRESSURE



BODY LENGTH (BL)						OH
9750	10250	10750				
58	49°	55	47°	53	44°	150
62	51°	59	48°	56	46°	450
68	53°	63	50°	60	47°	750

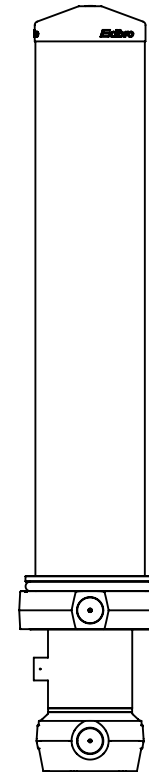
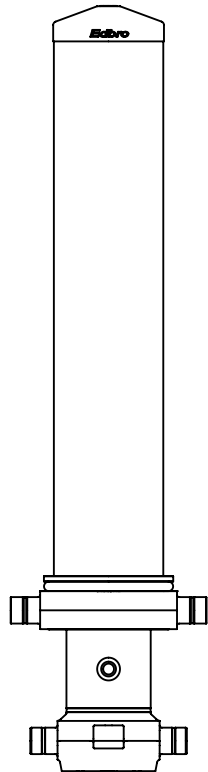
d = 229; r = 900; Working Pressure 175 bar

### For guidance only;

Higher working pressures and tipping capacities may be possible.  
To check your application email - [applications@edbro.co.uk](mailto:applications@edbro.co.uk)

### NOTES

1. This cylinder is for lifting purposes only and side load conditions should be avoided
2. Cylinder is painted in primer paint to RAL5013
3. Refer to [www.edbro.com](http://www.edbro.com) for:-
  - Bracket details
  - Installation instructions that must be observed
  - Correct oil selection
  - An explanation of tipping capacity



CS190058178B19A11