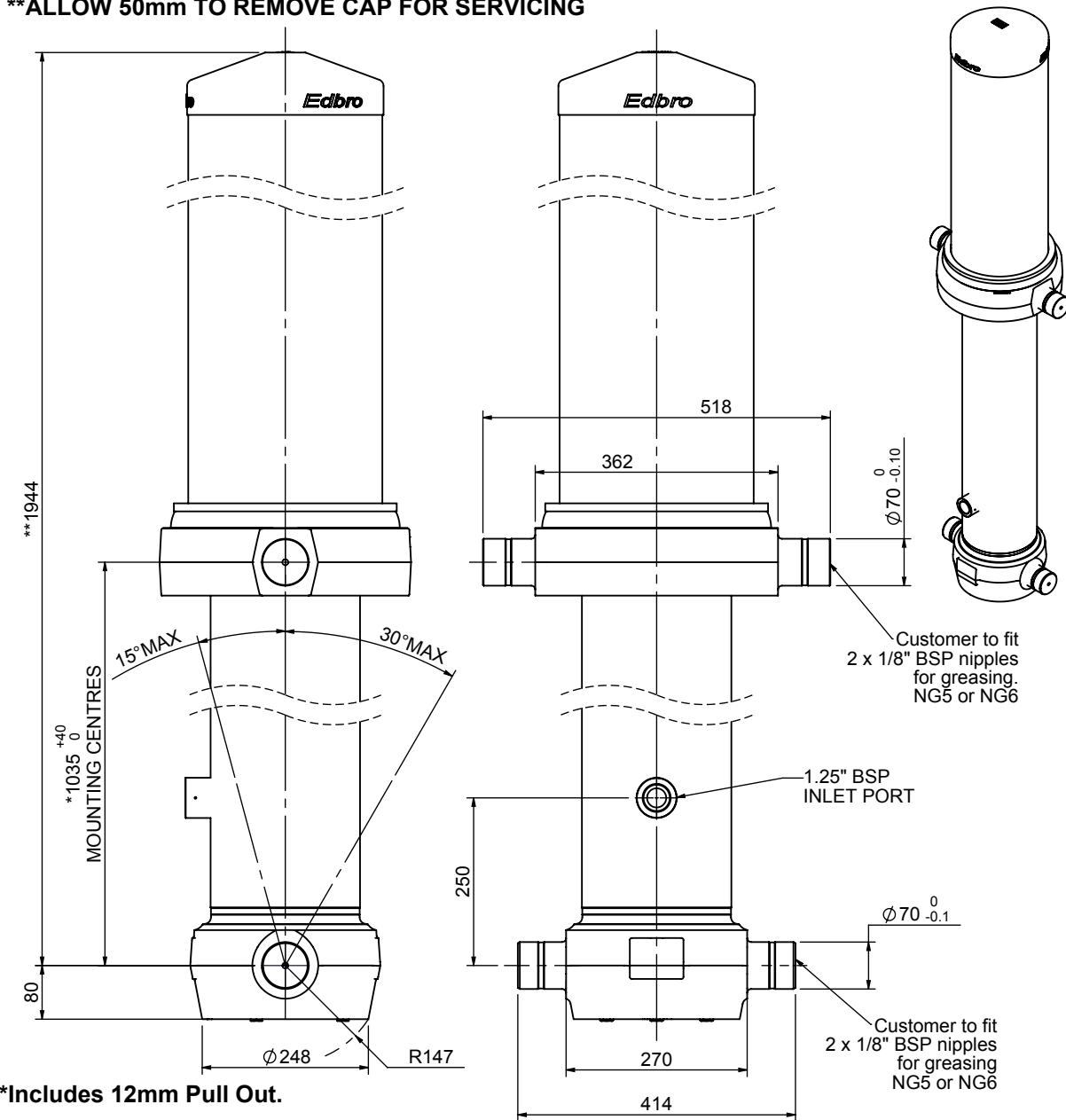


# Cylinder 5 stage front end with outer cover

**\*\*ALLOW 50mm TO REMOVE CAP FOR SERVICING**



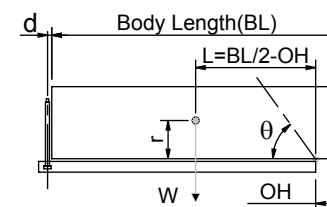
# CS190058178B25A15HD

## SPECIFICATION

**TIPPING CAPACITY : 36-45 TONNES\*\*\***

Stage	Diameter	Length	Stroke	Swept Volume
OUTER COVER	289	845	-	-
0	223	1878	-	-
1	198	1840	1605	49
2	176	1840	1627	40
3	155	1840	1637	31
4	136	1840	1647	24
5	117	1840	1662	18
Total (+5/-10)			8178	162
Final stroke reduced by	0	Priming Volume		32
Cylinder Mass (Kg)	415	Total Volume (Litres)		194
Maximum Pressure (Bar)	190	Max. first stage thrust		350 KN

## \*\*\*TIPPING CAPACITY AT WORKING PRESSURE



BODY LENGTH (BL)						OH
10220	10731	11242				
39	47°	38	45°	36	43°	150
42	49°	40	46°	38	44°	450
45	50°	42	48°	40	45°	750

$d = 229$ ;  $r = 900$ ; Working Pressure 124 bar

Tipping angle ( $\theta$ )

Body + payload mass, W (tonne)

**For guidance only;**  
Higher working pressures and tipping capacities may be possible.  
To check your application email - [applications@edbro.co.uk](mailto:applications@edbro.co.uk)

## NOTES

1. This cylinder is for lifting purposes only and side load conditions should be avoided
2. Cylinder is painted in primer paint to RAL5013
3. Refer to [www.edbro.com](http://www.edbro.com) for;-
  - Bracket details
  - Installation instructions that must be observed
  - Correct oil selection
  - An explanation of tipping capacity



**JOST UK Ltd**  
Edbro House, Nelson Street, Bolton, England, BL3 2JJ  
Tel +44 (0) 1204 528888 Fax +44 (0) 1204 531957  
Email: [sales@jost-world.com](mailto:sales@jost-world.com) Web: [www.edbro.com](http://www.edbro.com)

Technical Specifications are subject to change without notice  
Date Created/Updated: 17 November 2020  
Refer [www.edbro.com](http://www.edbro.com) to confirm latest specification  
All dimensions are in 'mm', unless otherwise stated