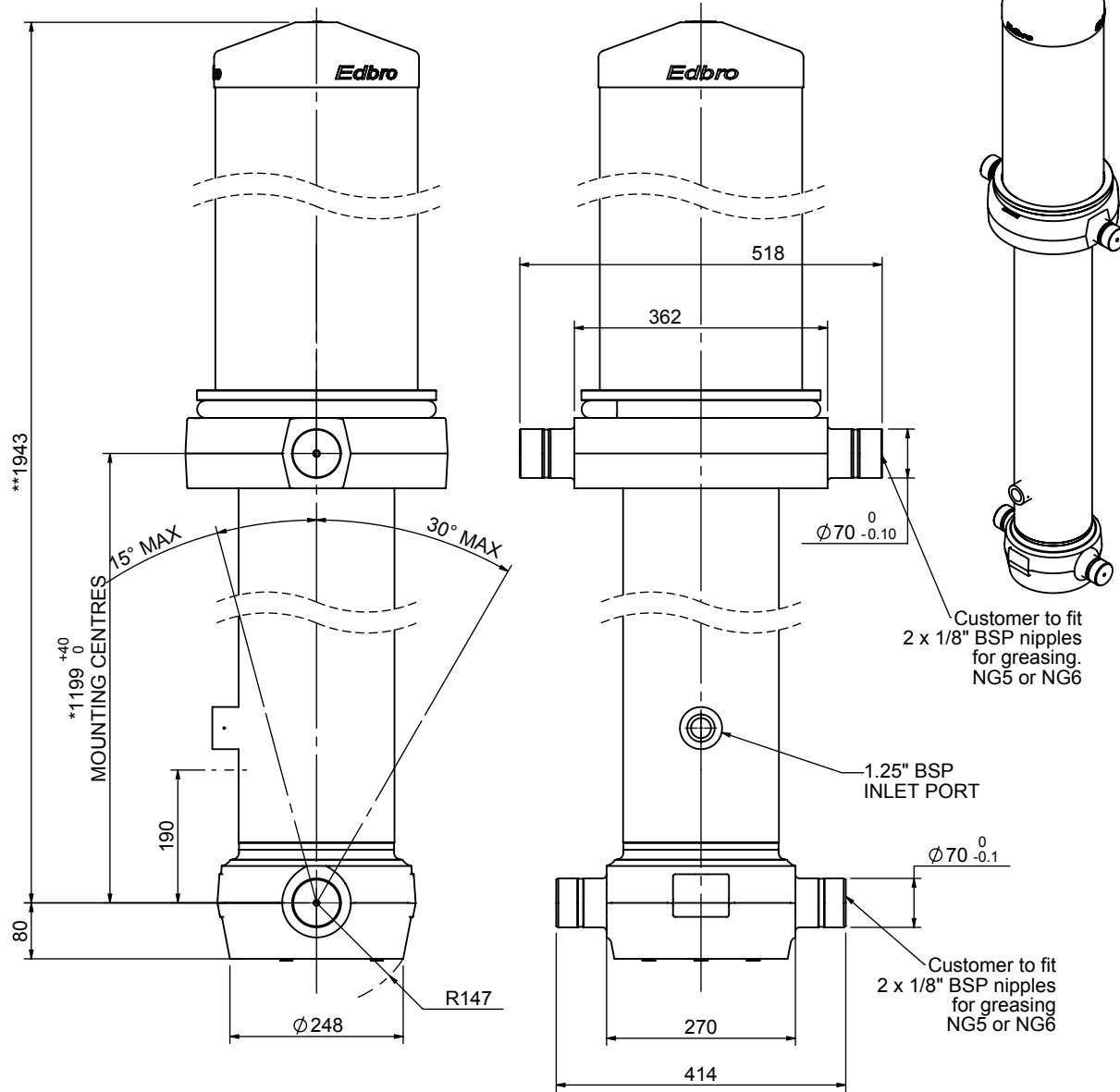


Cylinder 5 stage front end with outer cover

****ALLOW 50mm TO REMOVE CAP FOR SERVICING**



***Includes 11mm Pull Out.**

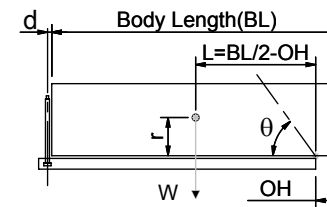
CS190058178B25A16

SPECIFICATION

TIPPING CAPACITY : 36-46 TONNES***

Stage	Diameter	Length	Stroke	Swept Volume
OUTER COVER	289	680	-	-
0	223	1878	-	-
1	198	1840	1606	49
2	176	1840	1627	40
3	155	1840	1637	31
4	136	1840	1647	24
5	117	1840	1662	18
Total (+5/-10)			8179	162
Final stroke reduced by	0	Priming Volume		32
Cylinder Mass (Kg)	409	Total Volume (Litres)		194
Maximum Pressure (Bar)	190	Max. first stage thrust		350 KN

***TIPPING CAPACITY AT WORKING PRESSURE



BODY LENGTH (BL)						OH
9750	10250	10750				
39	50°	38	47°	36	45°	150
42	52°	40	49°	38	46°	450
46	53°	43	50°	41	48°	750

$d = 229$; $r = 900$; Working Pressure 120 bar

Tipping angle (θ)

Body + payload mass, W (tonne)

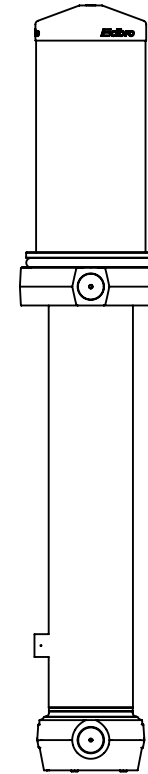
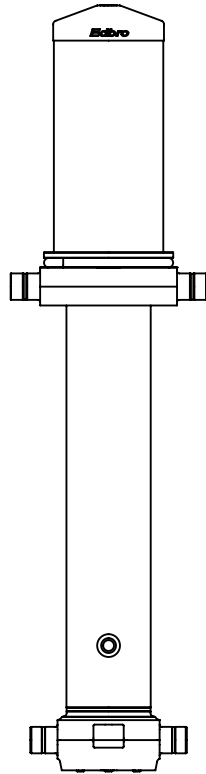
For guidance only;

Higher working pressures and tipping capacities may be possible.

To check your application email - applications@edbro.co.uk

NOTES

1. This cylinder is for lifting purposes only and side load conditions should be avoided
2. Cylinder is painted in primer paint to RAL5013
3. Refer to www.edbro.com for:-
 - Bracket details
 - Installation instructions that must be observed
 - Correct oil selection
 - An explanation of tipping capacity



CS190058178B25A16