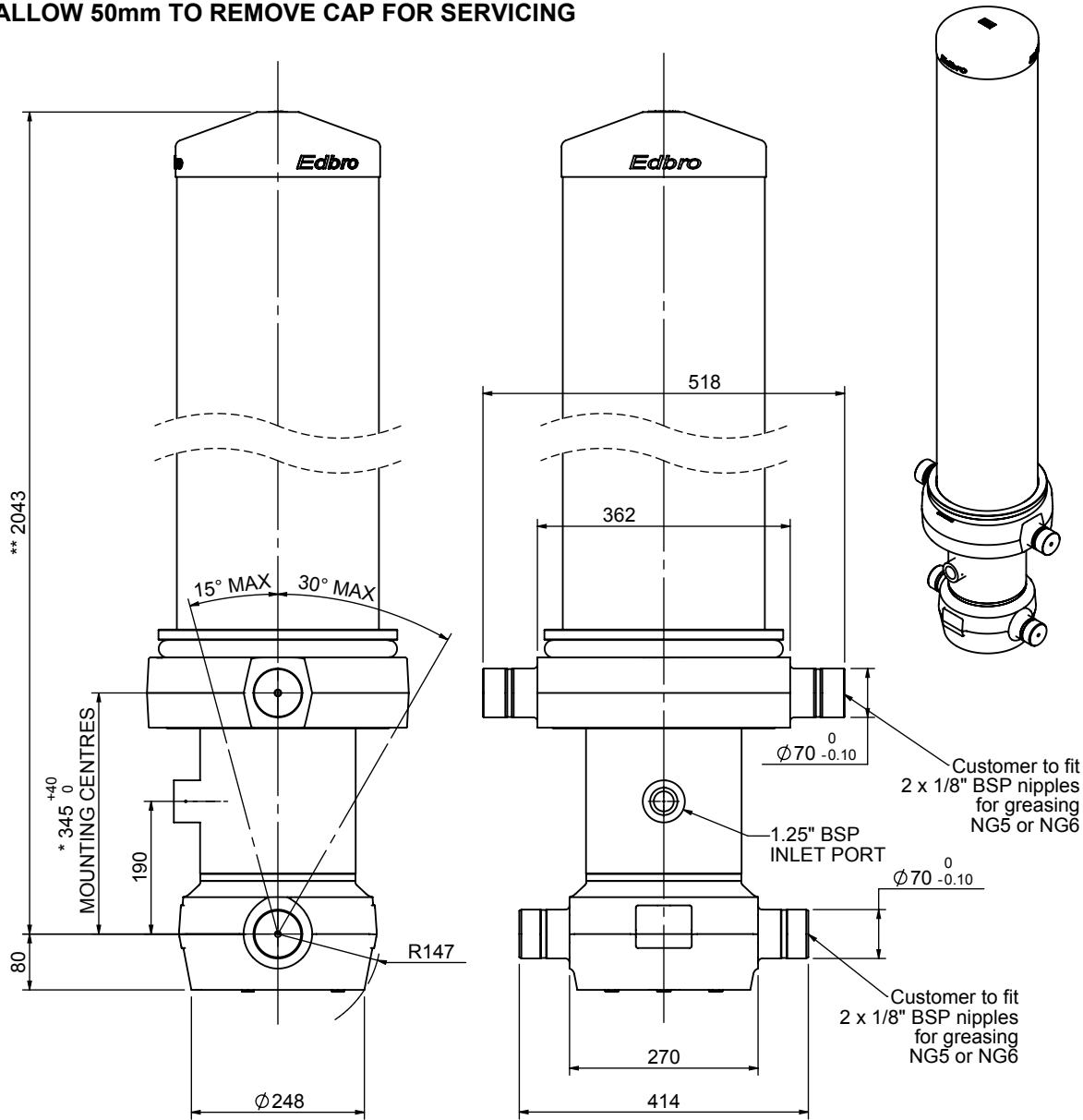


Cylinder 5 stage front end with outer cover

****ALLOW 50mm TO REMOVE CAP FOR SERVICING**

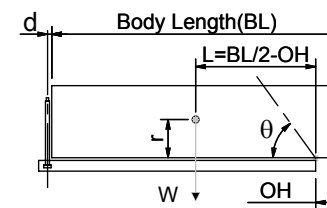


*Includes 11mm Pull Out.

CS190058678B19A11

SPECIFICATION		TIPPING CAPACITY : 42-53 TONNES***		
Stage	Diameter	Length	Stroke	Swept Volume
OUTER COVER	289	1635	-	-
0	223	1978	-	-
1	198	1940	1703	52
2	176	1940	1727	42
3	155	1940	1737	33
4	136	1940	1747	25
5	117	1940	1762	19
Total (+5/-10)			8676	171
Final stroke reduced by	0	Priming Volume		34
Cylinder Mass (Kg)	459	Total Volume (Litres)		205
Maximum Pressure (Bar)	190	Max. first stage thrust		350 KN

***TIPPING CAPACITY AT WORKING PRESSURE



BODY LENGTH (BL)						OH
10000	10500	11000				
46	51°	43	49°	42	46°	150
49	53°	46	50°	44	48°	450
53	55°	50	52°	47	49°	750

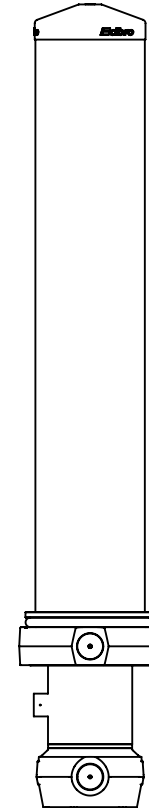
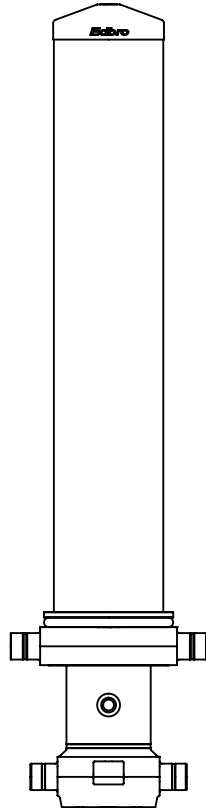
d = 229; r = 900; Working Pressure 135 bar

For guidance only;

Higher working pressures and tipping capacities may be possible.
To check your application email - applications@edbro.co.uk

NOTES

1. This cylinder is for lifting purposes only and side load conditions should be avoided
2. Cylinder is painted in primer paint to RAL5013
3. Refer to www.edbro.com for:-
 - Bracket details
 - Installation instructions that must be observed
 - Correct oil selection
 - An explanation of tipping capacity



CS190058678B19A11