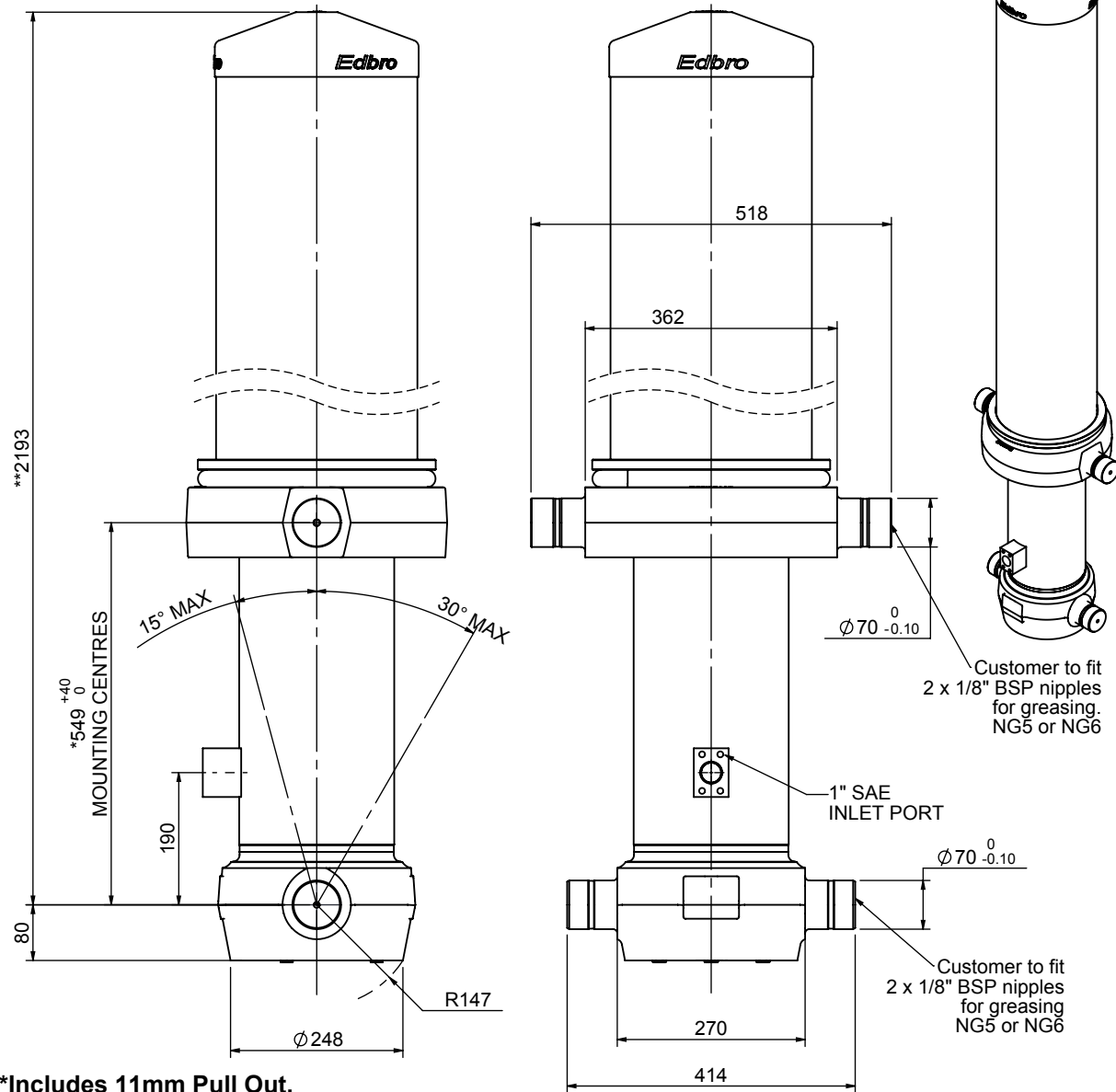


Cylinder 5 stage front end with outer cover

****ALLOW 50mm TO REMOVE CAP FOR SERVICING**



***Includes 11mm Pull Out.
All Stages Chrome Plated**

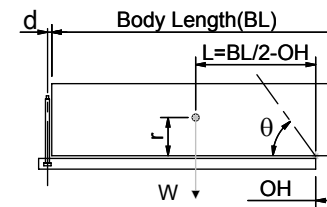
CS190059428S19A12C

SPECIFICATION

TIPPING CAPACITY : 35-42 TONNES***

Stage	Diameter	Length	Stroke	Swept Volume
OUTER COVER	289	1580	-	-
0	223	2128	-	-
1	198	2090	1856	57
2	176	2090	1877	46
3	155	2090	1887	36
4	136	2090	1897	28
5	117	2090	1912	21
Total (+5/-10)			9429	188
Final stroke reduced by	0	Priming Volume		37
Cylinder Mass (Kg)	479	Total Volume (Litres)		225
Maximum Pressure (Bar)	190	Max. first stage thrust		350 KN

***TIPPING CAPACITY AT WORKING PRESSURE



BODY LENGTH (BL)						OH
10750	11250	11750				
37	52°	35	49°			150
39	54°	37	51°	36	49°	450
42	55°	40	52°	38	50°	750

$d = 229$; $r = 900$; Working Pressure 110 bar

For guidance only;

Higher working pressures and tipping capacities may be possible.

To check your application email - applications@edbro.co.uk

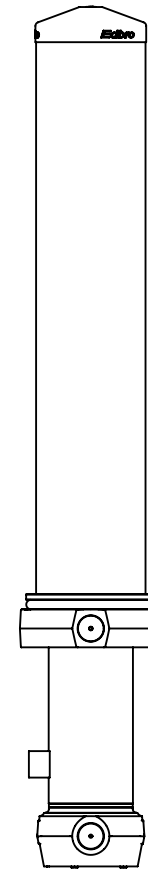
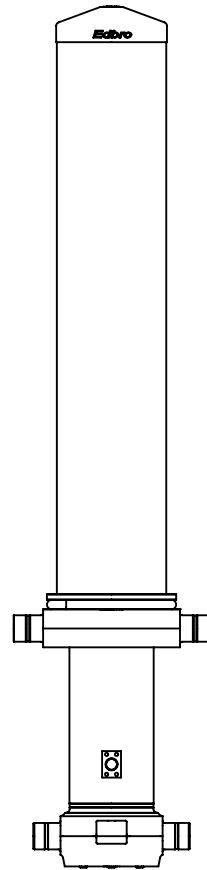
NOTES

1. This cylinder is for lifting purposes only and side load conditions should be avoided
2. Cylinder is painted in primer paint to RAL5013
3. Refer to www.edbro.com for:-
 - Bracket details
 - Installation instructions that must be observed
 - Correct oil selection
 - An explanation of tipping capacity

Edbro
SETTING THE INDUSTRY STANDARD

Edbro plc
Nelson Street, Bolton, England, BL3 2JJ
Tel +44 (0) 1204 528888 Fax +44 (0) 1204 531957
Email: postmaster@edbro.com Web: www.edbro.com

Technical Specifications are subject to change without notice
Date Created/Updated: 27 May 2014
Refer www.edbro.com to confirm latest specification
All dimensions are in 'mm', unless otherwise stated



CS190059428S19A12C