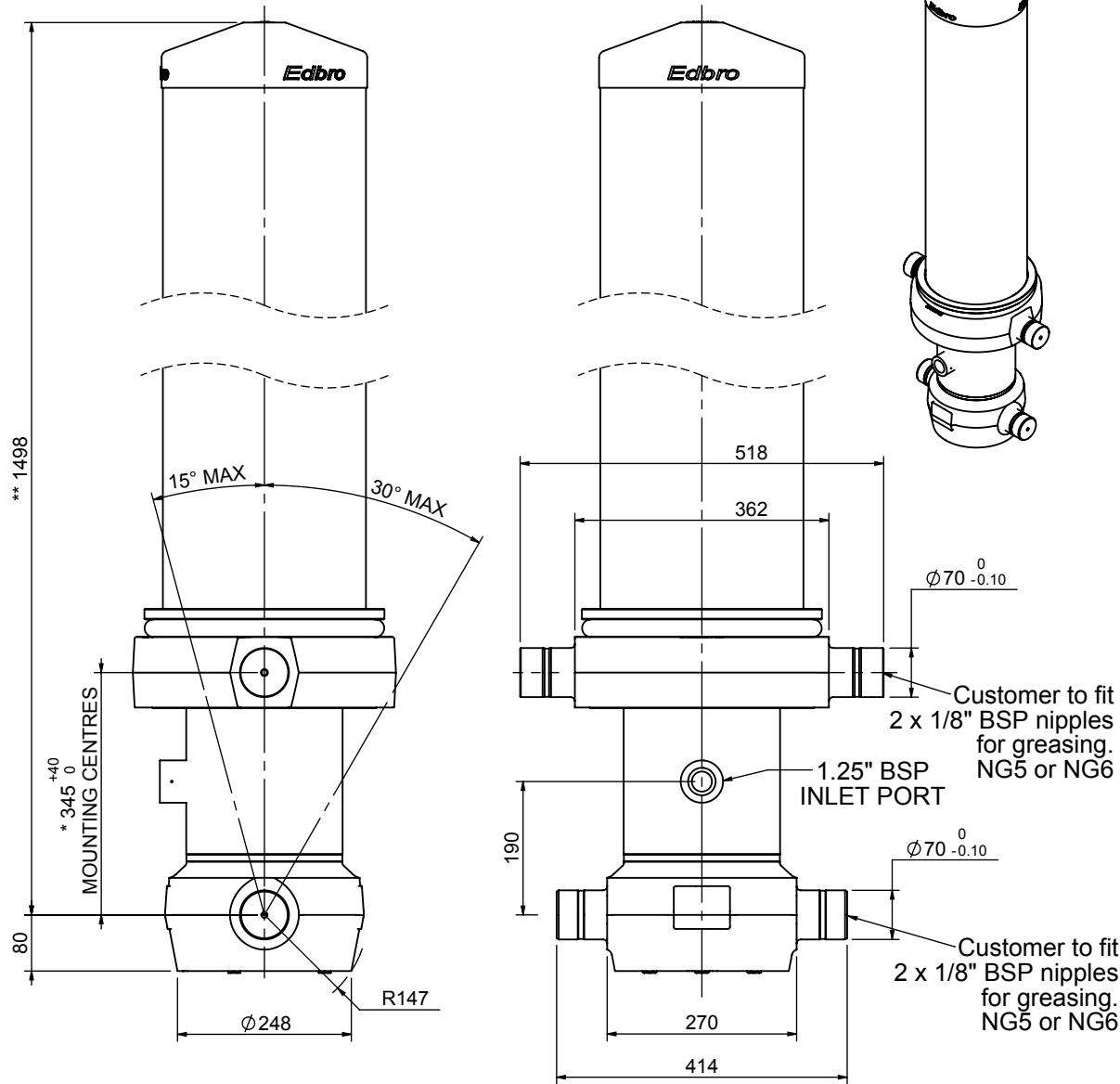


Cylinder 6 stage front end with outer cover

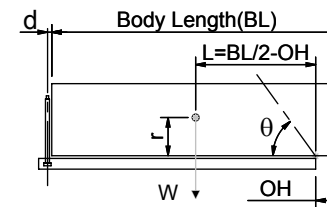
****ALLOW 50mm TO REMOVE CAP FOR SERVICING**



CS190067145B19A11

SPECIFICATION		TIPPING CAPACITY : 40-57 TONNES***		
Stage	Diameter	Length	Stroke	Swept Volume
OUTER COVER	289	1090	-	-
0	223	1428	-	-
1	198	1390	1153	36
2	176	1390	1177	29
3	155	1390	1187	22
4	136	1390	1197	17
5	117	1390	1212	13
6	98	1390	1217	9
Total (+5/-10)			7143	126
Final stroke reduced by	0	Priming Volume		22
Cylinder Mass (Kg)	371	Total Volume (Litres)		148
Maximum Pressure (Bar)	190	Max. first stage thrust		350 KN

***TIPPING CAPACITY AT WORKING PRESSURE



BODY LENGTH (BL)					OH	
8250	8750	9250				
45	51°	42	48°	40	45°	150
50	53°	46	50°	43	47°	450
57	55°	51	52°	47	49°	750

d = 229; r = 900; Working Pressure 175 bar

For guidance only;

Higher working pressures and tipping capacities may be possible.
To check your application email - applications@edbro.co.uk

NOTES

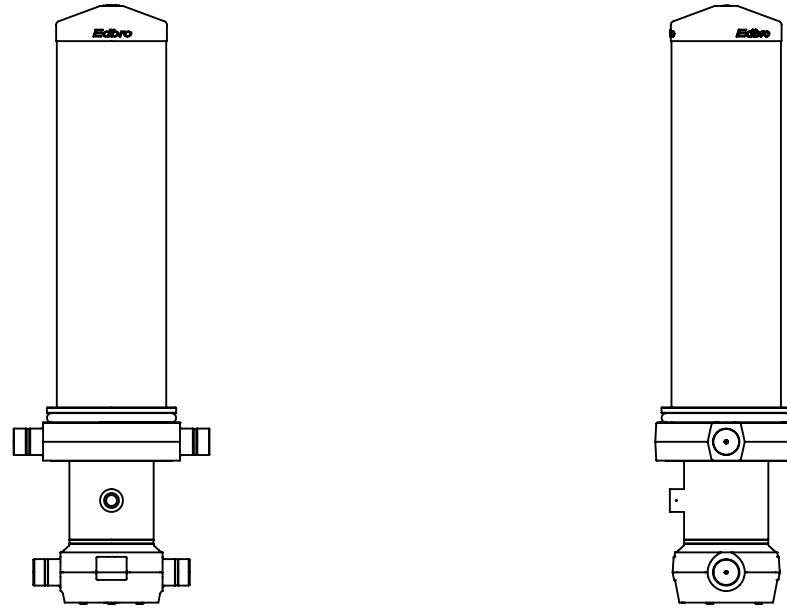
1. This cylinder is for lifting purposes only and side load conditions should be avoided
2. Cylinder is painted in primer paint to RAL5013
3. Refer to www.edbro.com for:-
 - Bracket details
 - Installation instructions that must be observed
 - Correct oil selection
 - An explanation of tipping capacity

*Includes 11mm Pull Out.

Edbro
SETTING THE INDUSTRY STANDARD

Edbro plc
Nelson Street, Bolton, England, BL3 2JJ
Tel +44 (0) 1204 528888 Fax +44 (0) 1204 531957
Email: postmaster@edbro.com Web: www.edbro.com

Technical Specifications are subject to change without notice
Date Created/Updated: 20 July 2012
Refer www.edbro.com to confirm latest specification
All dimensions are in 'mm', unless otherwise stated



CS190067145B19A11