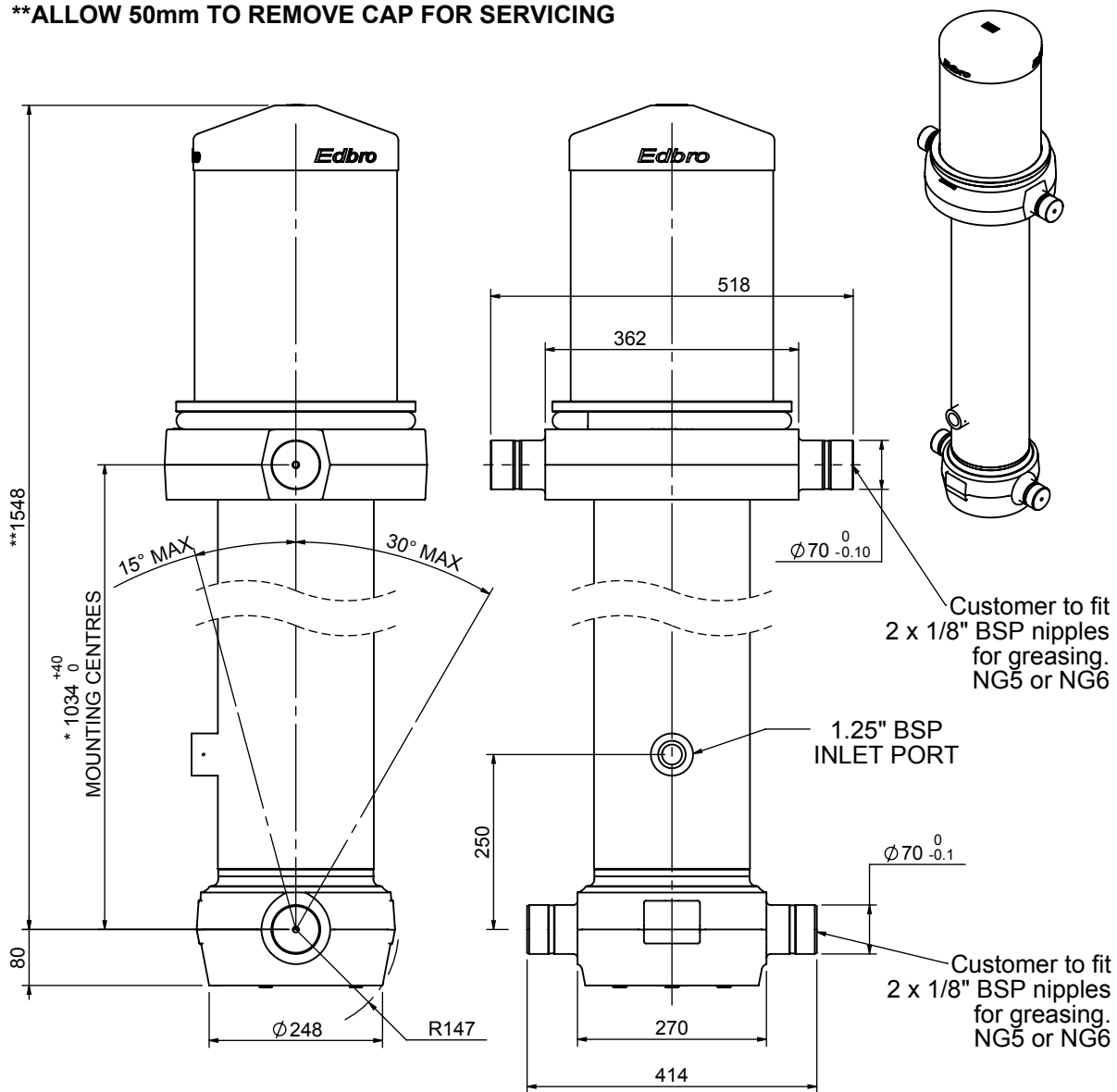


# Cylinder 6 stage front end with outer cover

**\*\*ALLOW 50mm TO REMOVE CAP FOR SERVICING**



\*Includes 11mm Pull Out.

# CS190067445B25A15

**SPECIFICATION** **TIPPING CAPACITY : 33-46 TONNES\*\*\***

Stage	Diameter	Length	Stroke	Swept Volume
OUTER COVER	289	450	-	-
0	223	1478	-	-
1	198	1440	1206	37
2	176	1440	1227	30
3	155	1440	1237	23
4	136	1440	1247	18
5	117	1440	1262	14
6	98	1440	1267	10
Total (+5/-10)			7446	132
Final stroke reduced by	0	Priming Volume		22.5
Cylinder Mass (Kg)	355	Total Volume (Litres)		154.5
Maximum Pressure (Bar)	190	Max. first stage thrust		350 KN

**\*\*\*TIPPING CAPACITY AT WORKING PRESSURE**

BODY LENGTH (BL)						OH
8750		9250		9750		
37	51°	35	48°	33	45°	150
41	52°	38	49°	36	46°	450
46	55°	42	51°	39	48°	750

d = 229; r = 900; Working Pressure 150 bar  
 Tipping angle (θ)  
 Body + payload mass, W (tonne)  
**For guidance only;**  
 Higher working pressures and tipping capacities may be possible.  
 To check your application email - [applications@edbro.co.uk](mailto:applications@edbro.co.uk)

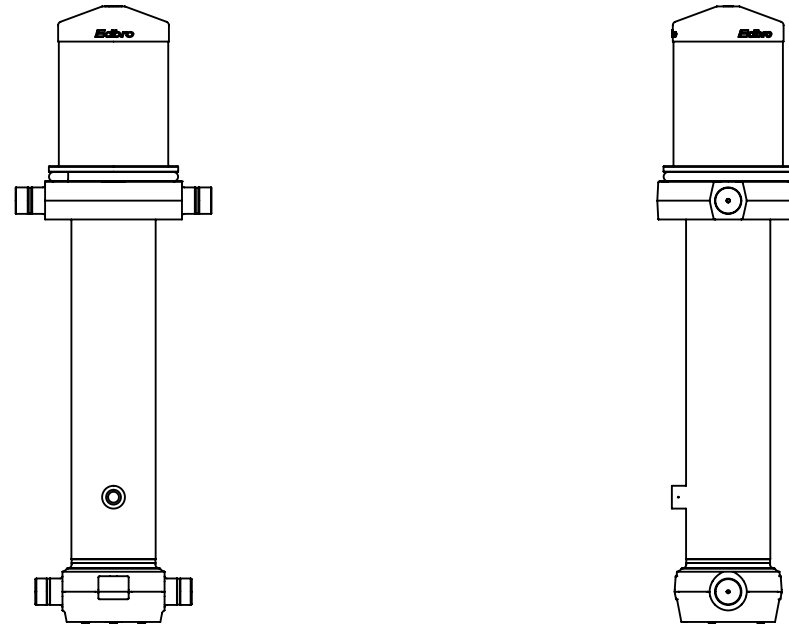
**NOTES**

1. This cylinder is for lifting purposes only and side load conditions should be avoided
2. Cylinder is painted in primer paint to RAL5013
3. Refer to [www.edbro.com](http://www.edbro.com) for;-
  - Bracket details
  - Installation instructions that must be observed
  - Correct oil selection
  - An explanation of tipping capacity



**Edbro plc**  
 Nelson Street, Bolton, England, BL3 2JJ  
 Tel +44 (0) 1204 528888 Fax +44 (0) 1204 531957  
 Email: [postmaster@edbro.com](mailto:postmaster@edbro.com) Web: [www.edbro.com](http://www.edbro.com)

Technical Specifications are subject to change without notice  
 Date Created/Updated: 22 April 2014  
 Refer [www.edbro.com](http://www.edbro.com) to confirm latest specification  
 All dimensions are in 'mm', unless otherwise stated



CS190067445B25A15