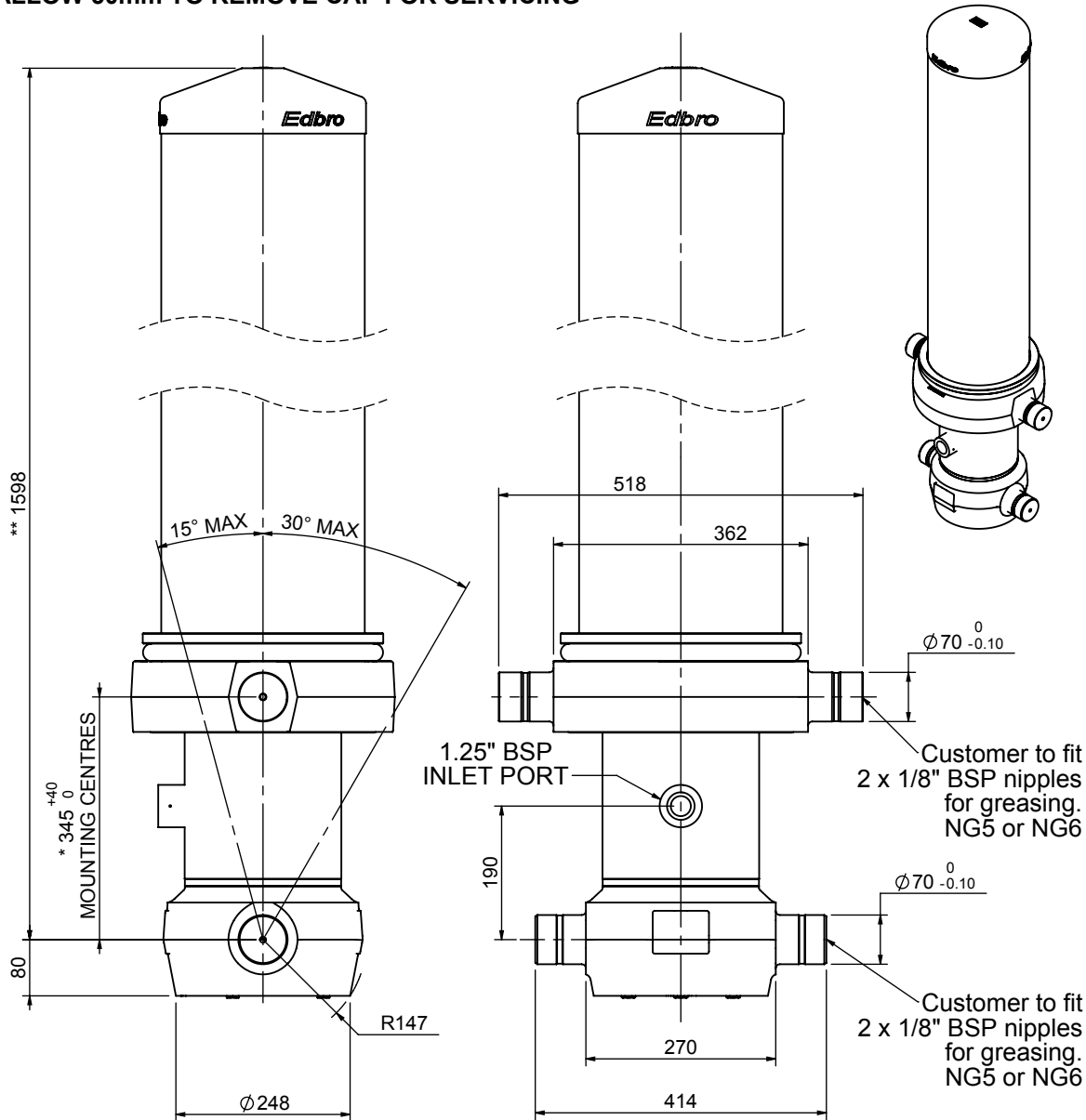


# Cylinder 6 stage front end with outer cover

**\*\*ALLOW 50mm TO REMOVE CAP FOR SERVICING**

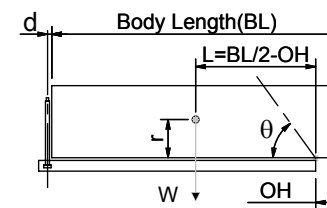


**\*Includes 11mm Pull Out. None**

## CS190067745B19A11

SPECIFICATION		TIPPING CAPACITY : 38-51 TONNES***		
Stage	Diameter	Length	Stroke	Swept Volume
OUTER COVER	289	1190	-	-
0	223	1528	-	-
1	198	1490	1253	39
2	176	1490	1277	31
3	155	1490	1287	24
4	136	1490	1297	19
5	117	1490	1312	14
6	98	1490	1317	10
Total (+5/-10)			7743	137
Final stroke reduced by	0	Priming Volume		23
Cylinder Mass (Kg)	391	Total Volume (Litres)		160
Maximum Pressure (Bar)	190	Max. first stage thrust		350 KN

### \*\*\*TIPPING CAPACITY AT WORKING PRESSURE



BODY LENGTH (BL)					OH	
9250	9750	10250				
42	49°	40	47°	38	44°	150
46	51°	43	48°	41	46°	450
51	53°	47	50°	44	47°	750

$d = 229$ ;  $r = 900$ ; Working Pressure 175 bar

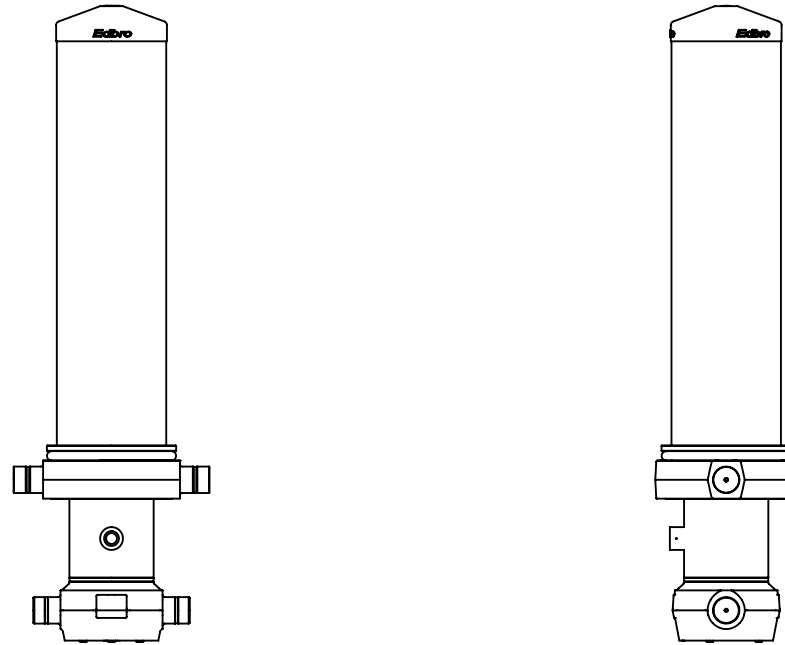
### For guidance only;

Higher working pressures and tipping capacities may be possible.

To check your application email - [applications@edbro.co.uk](mailto:applications@edbro.co.uk)

### NOTES

1. This cylinder is for lifting purposes only and side load conditions should be avoided
2. Cylinder is painted in primer paint to RAL5013
3. Refer to [www.edbro.com](http://www.edbro.com) for:-
  - Bracket details
  - Installation instructions that must be observed
  - Correct oil selection
  - An explanation of tipping capacity



CS190067745B19A11