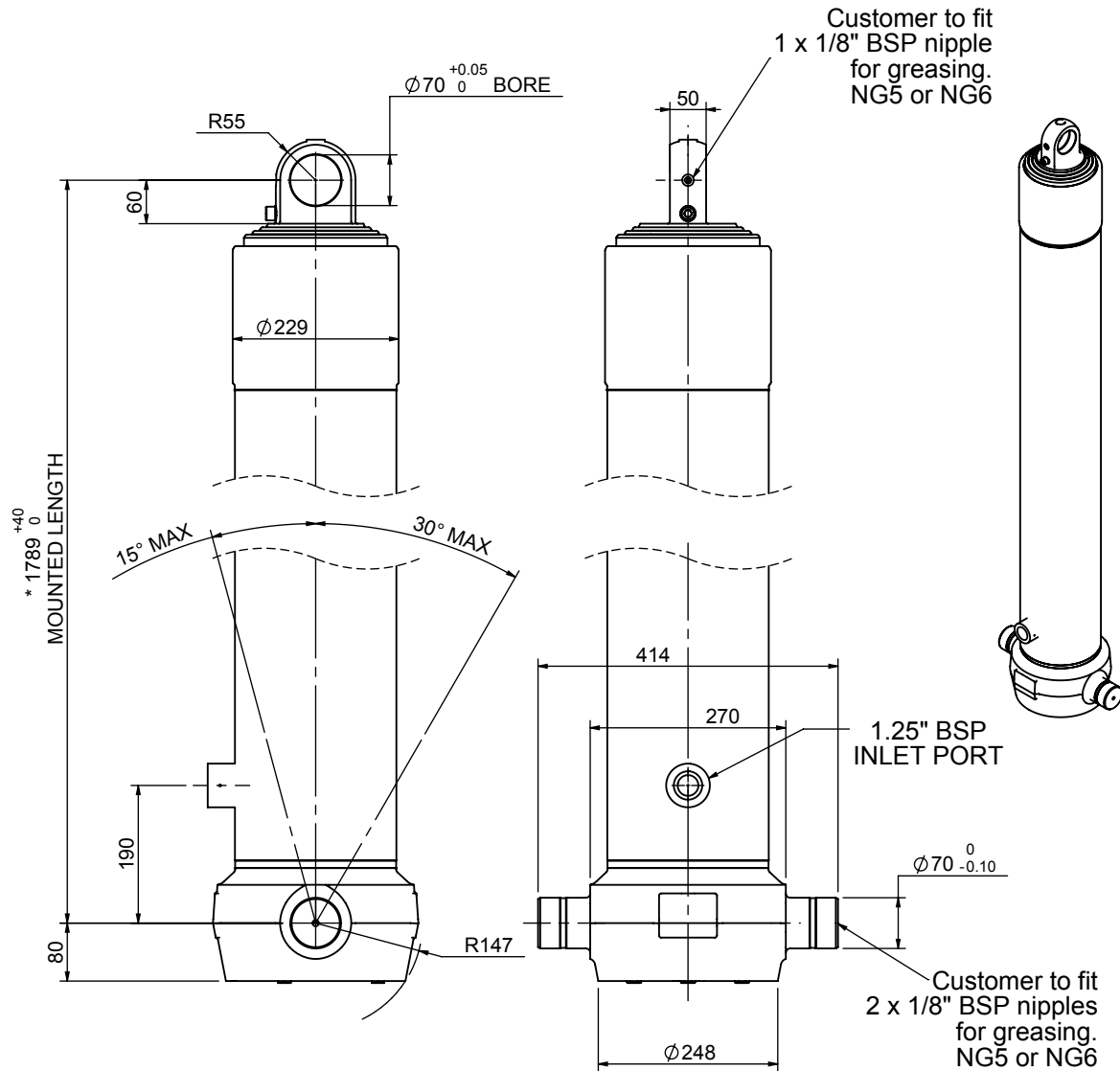


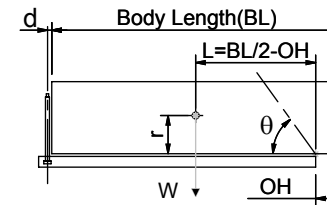
Cylinder 4 stage front end with plain eye



CS190E46116B19A01

SPECIFICATION		TIPPING CAPACITY : 53-74 TONNES***		
Stage	Diameter	Length	Stroke	Swept Volume
-	-	-	-	-
-	-	-	-	-
0	223	1778	-	-
1	198	1740	1504	46
2	176	1740	1527	37
3	155	1740	1537	29
4	136	1740	1547	22
Total (+5/-10)			6115	134
Final stroke reduced by	0	Priming Volume		33
Cylinder Mass (Kg)	295	Total Volume (Litres)		167
Maximum Pressure (Bar)	190	Max. first stage thrust		350 KN

***TIPPING CAPACITY AT WORKING PRESSURE



BODY LENGTH (BL)						OH
7500		8000		8500		
59	50°	56	47°	53	44°	150
65	53°	61	49°	57	45°	450
74	55°	67	51°	62	47°	750

d = 0; r = 900; Working Pressure 135 bar

For guidance only;

Higher working pressures and tipping capacities may be possible.
To check your application email - applications@edbro.co.uk

NOTES

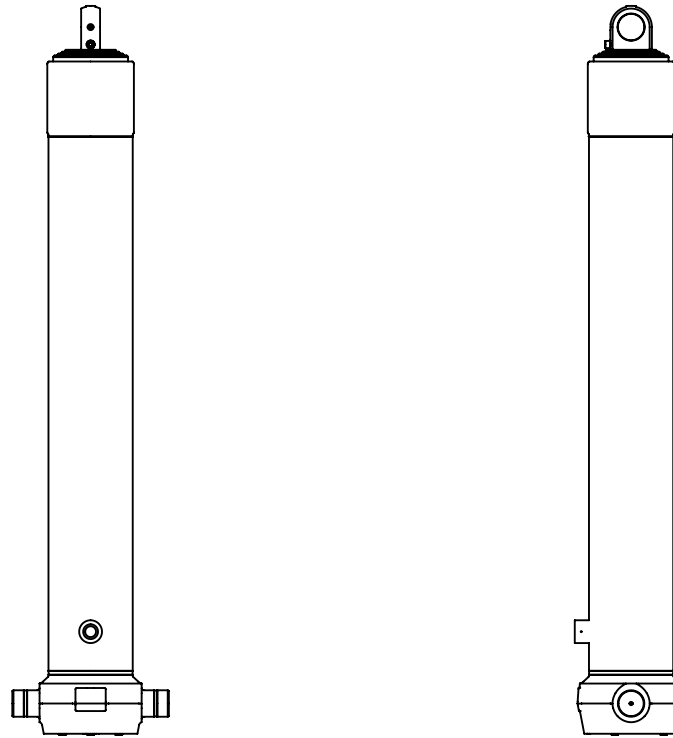
- This cylinder is for lifting purposes only and side load conditions should be avoided
- Cylinder is painted in primer paint to RAL5013
- Refer to www.edbro.com for:-
 - Bracket details
 - Installation instructions that must be observed
 - Correct oil selection
 - An explanation of tipping capacity

*Includes 10mm Pull Out. Last Stage Chrome Plated

Edbro
SETTING THE INDUSTRY STANDARD

Edbro plc
Nelson Street, Bolton, England, BL3 2JJ
Tel +44 (0) 1204 528888 Fax +44 (0) 1204 531957
Email: postmaster@edbro.com Web: www.edbro.com

Technical Specifications are subject to change without notice
Date Created/Updated: 16 July 2012
Refer www.edbro.com to confirm latest specification
All dimensions are in 'mm', unless otherwise stated



CS190E46116B19A01