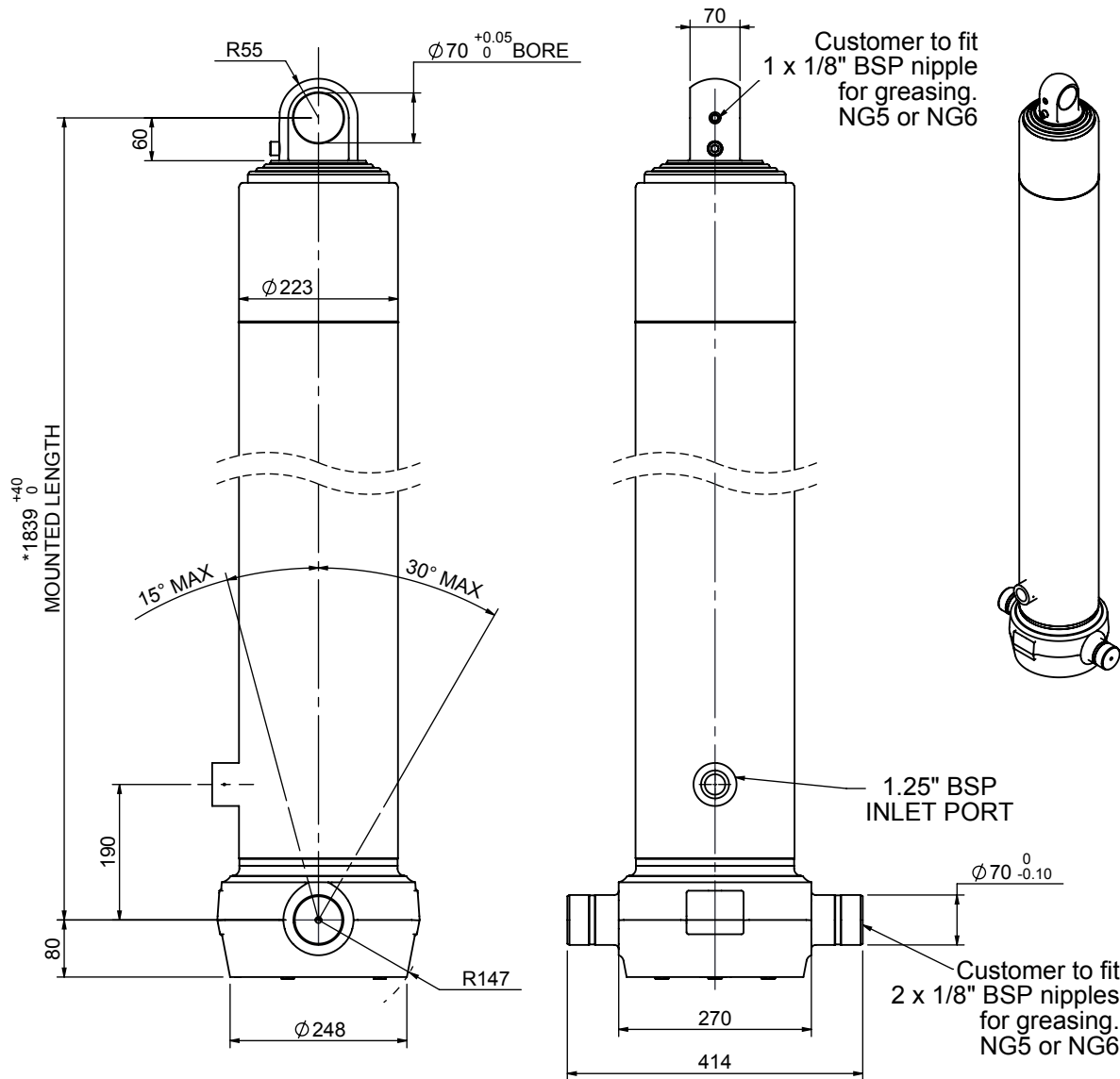


Cylinder 4 stage front end with plain eye

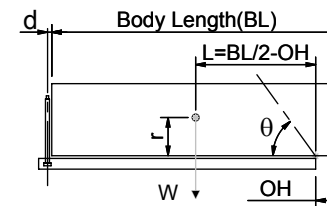


*Includes 10mm Pull Out. Last Stage Chrome Plated

CS190E46316B19A01

| SPECIFICATION | | TIPPING CAPACITY : 53-72 TONNES*** | | |
|-------------------------|----------|------------------------------------|--------|--------------|
| Stage | Diameter | Length | Stroke | Swept Volume |
| - | - | - | - | - |
| - | - | - | - | - |
| 0 | 223 | 1828 | - | - |
| 1 | 198 | 1790 | 1557 | 48 |
| 2 | 176 | 1790 | 1577 | 38 |
| 3 | 155 | 1790 | 1587 | 30 |
| 4 | 136 | 1790 | 1597 | 23 |
| Total (+5/-10) | | | 6318 | 139 |
| Final stroke reduced by | 0 | Priming Volume | | 34 |
| Cylinder Mass (Kg) | 297 | Total Volume (Litres) | | 173 |
| Maximum Pressure (Bar) | 190 | Max. first stage thrust | | 350 KN |

***TIPPING CAPACITY AT WORKING PRESSURE



| BODY LENGTH (BL) | | | | | | OH |
|------------------|-----|------|-----|------|-----|-----|
| 7750 | | 8250 | | 8750 | | |
| 58 | 50° | 55 | 47° | 53 | 44° | 150 |
| 64 | 53° | 60 | 49° | 57 | 46° | 450 |
| 72 | 55° | 66 | 51° | 62 | 47° | 750 |

d = 0; r = 900; Working Pressure 135 bar

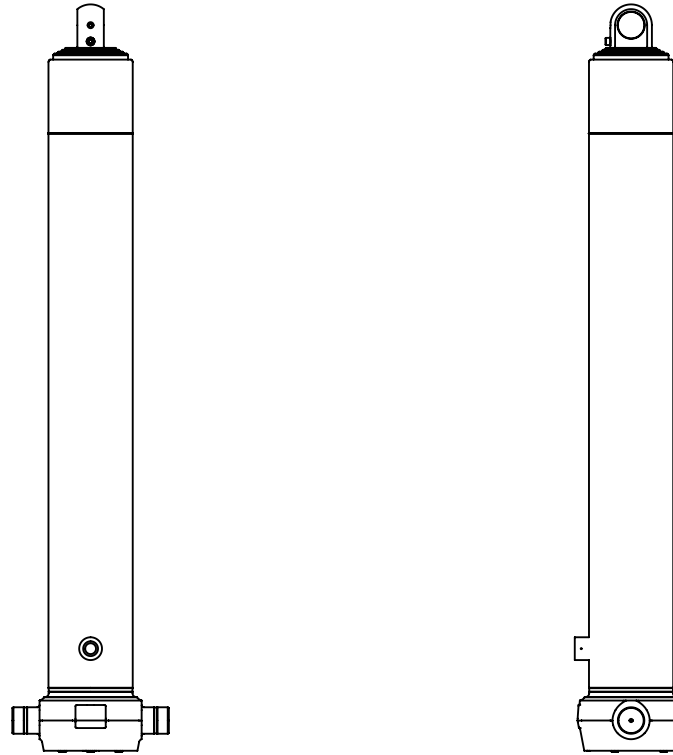
For guidance only;

Higher working pressures and tipping capacities may be possible.

To check your application email - applications@edbro.co.uk

NOTES

1. This cylinder is for lifting purposes only and side load conditions should be avoided
2. Cylinder is painted in primer paint to RAL5013
3. Refer to www.edbro.com for:-
 - Bracket details
 - Installation instructions that must be observed
 - Correct oil selection
 - An explanation of tipping capacity



CS190E46316B19A01