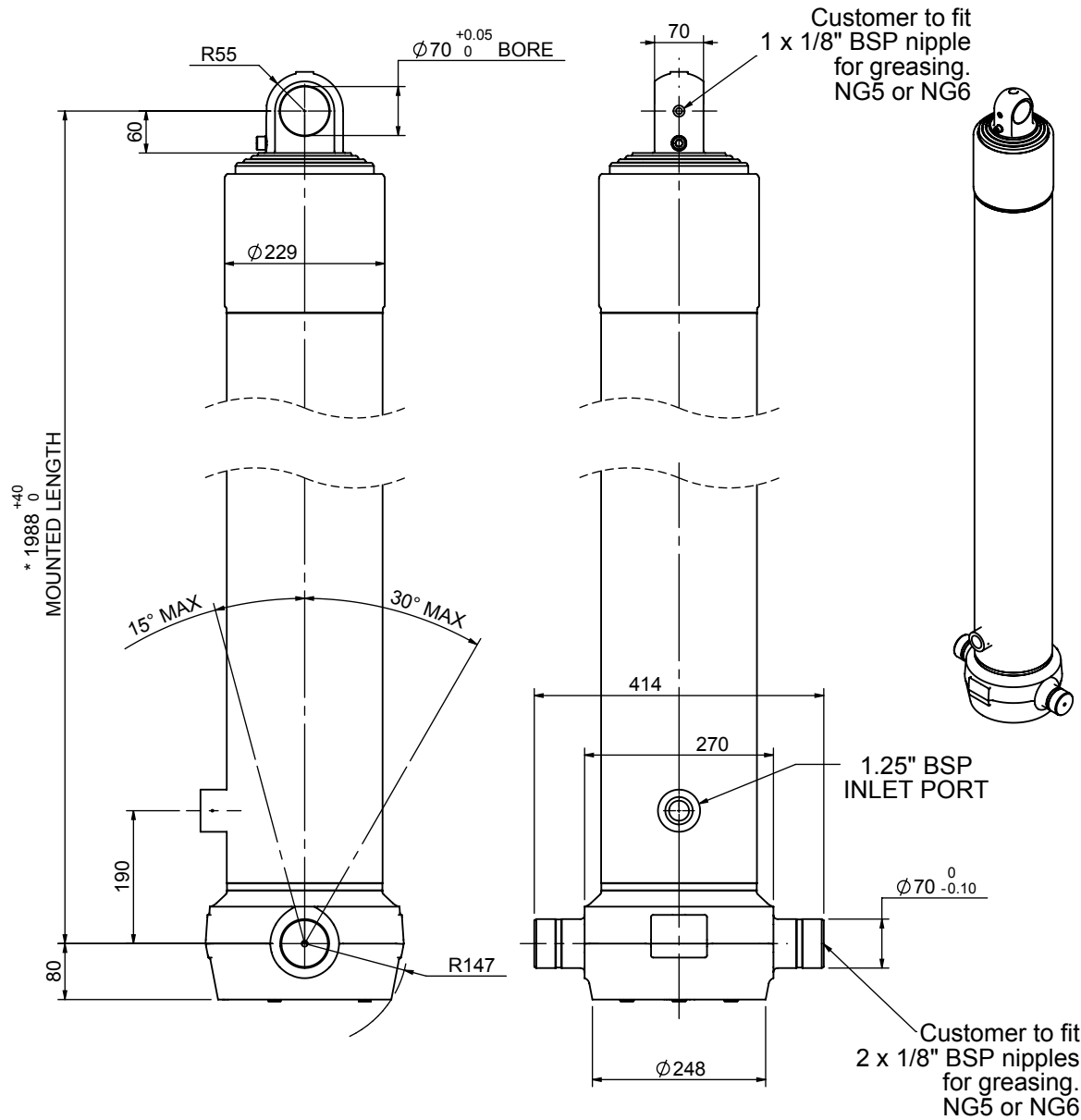


Cylinder 4 stage front end with plain eye



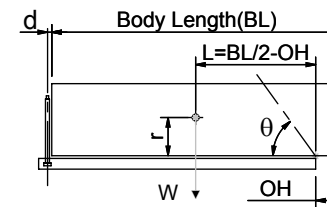
*Includes 10mm Pull Out. Last Stage Chrome Plated

CS190E46916B19A01

SPECIFICATION

SPECIFICATION		TIPPING CAPACITY : 46-61 TONNES***		
Stage	Diameter	Length	Stroke	Swept Volume
-	-	-	-	-
-	-	-	-	-
0	223	1978	-	-
1	198	1940	1704	52
2	176	1940	1727	42
3	155	1940	1737	33
4	136	1939	1747	25
Total (+5/-10)			6915	152
Final stroke reduced by	0	Priming Volume		37
Cylinder Mass (Kg)	323	Total Volume (Litres)		189
Maximum Pressure (Bar)	190	Max. first stage thrust		350 KN

***TIPPING CAPACITY AT WORKING PRESSURE



BODY LENGTH (BL)						OH
8500		9000		9500		
51	50°	48	47°	46	44°	150
55	52°	52	49°	49	46°	450
61	54°	56	51°	53	48°	750

d = 0; r = 900; Working Pressure 120 bar

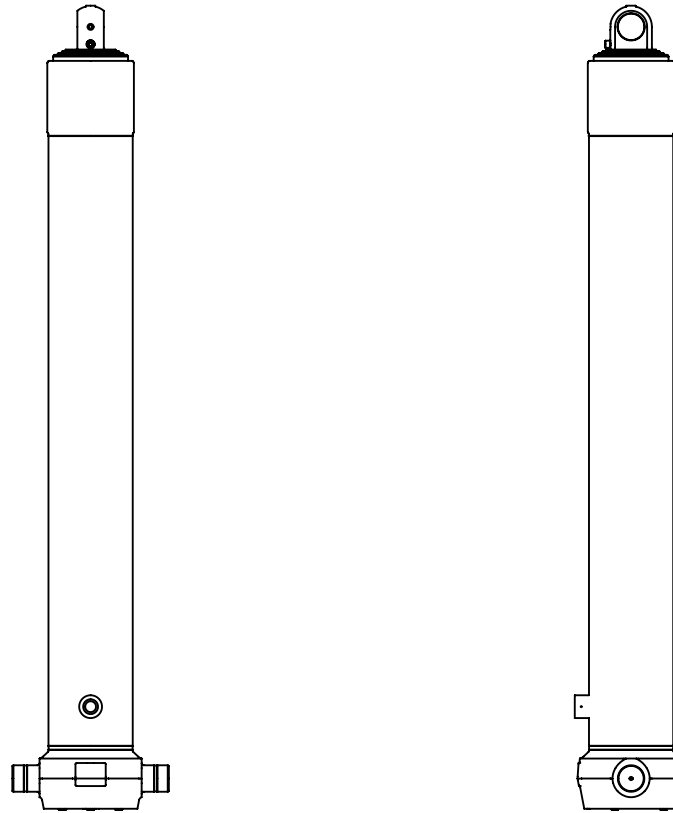
For guidance only;

Higher working pressures and tipping capacities may be possible.

To check your application email - applications@edbro.co.uk

NOTES

1. This cylinder is for lifting purposes only and side load conditions should be avoided
2. Cylinder is painted in primer paint to RAL5013
3. Refer to www.edbro.com for:-
 - Bracket details
 - Installation instructions that must be observed
 - Correct oil selection
 - An explanation of tipping capacity



CS190E46916B19A01