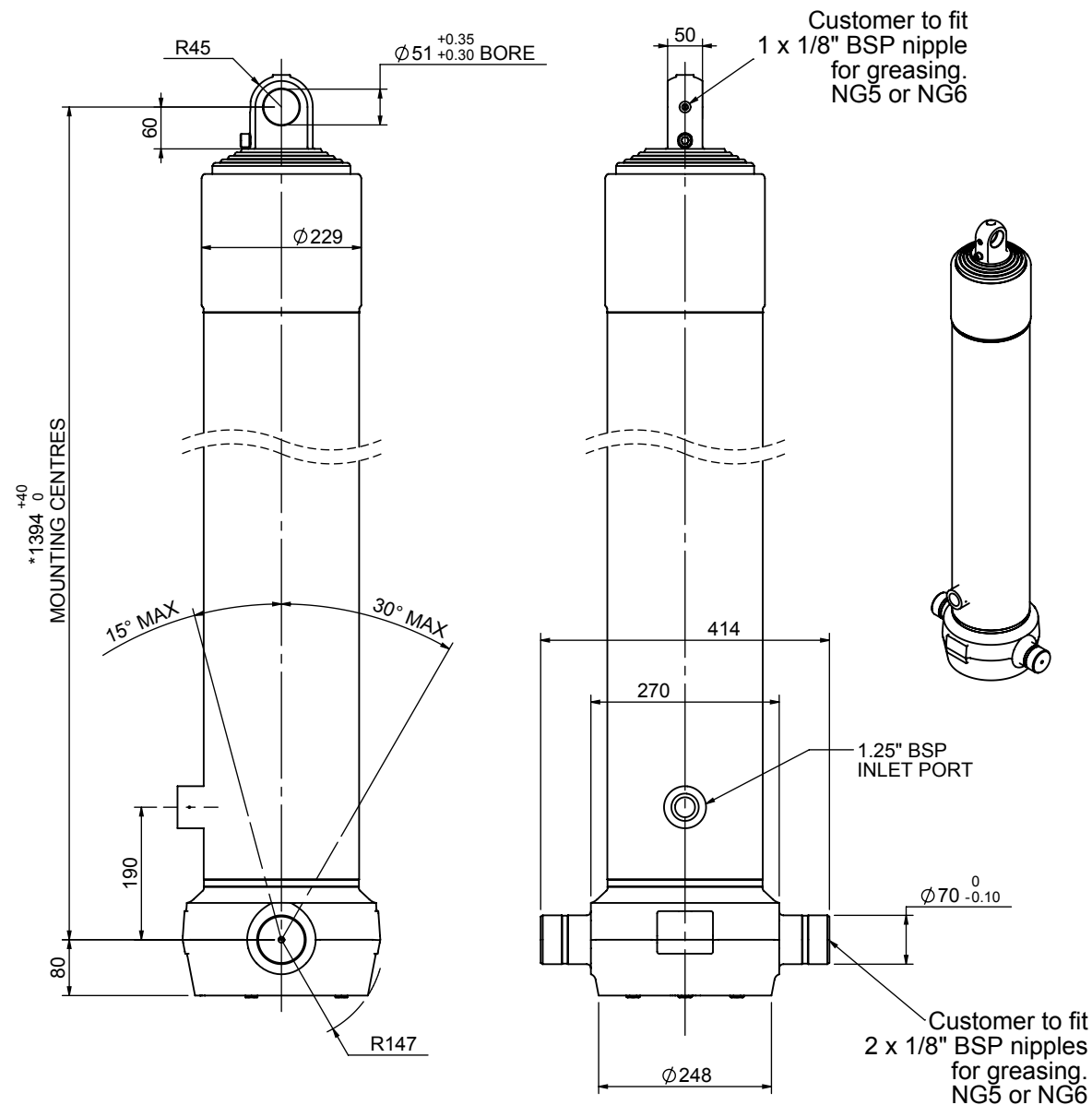


Cylinder 5 stage front end with plain eye

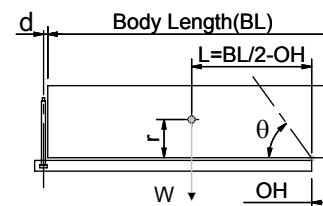


*Includes 10mm Pull Out. Last Stage Chrome Plated

CS190E55678B19A01

SPECIFICATION		TIPPING CAPACITY : 50 - 76 TONNES***		
Stage	Diameter	Length	Stroke	Swept Volume
-	-	-	-	-
0	223	1378	-	-
1	198	1340	1104	34
2	176	1340	1127	27
3	155	1340	1137	21
4	136	1340	1147	17
5	117	1340	1162	12
Total (+5/-10)			5677	111
Final stroke reduced by	0	Priming Volume		23
Cylinder Mass (Kg)	258	Total Volume (Litres)		134
Maximum Pressure (Bar)	190	Max. first stage thrust		350 KN

***TIPPING CAPACITY AT WORKING PRESSURE



BODY LENGTH (BL)						OH
7000	7500	8000				
57	50°	53	46°	50	43°	150
65	53°	59	48°	55	45°	450
76	55°	67	51°	60	47°	750

d = 0; r = 900; Working Pressure 165 bar

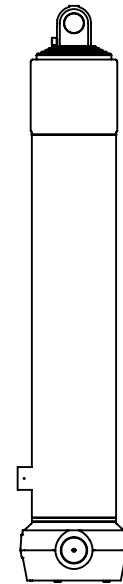
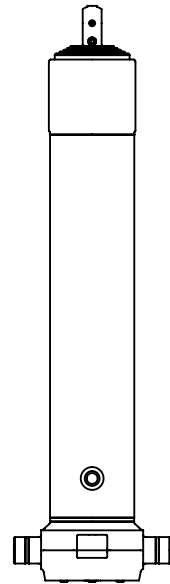
For guidance only;

Higher working pressures and tipping capacities may be possible.

To check your application email - applications@edbro.co.uk

NOTES

1. This cylinder is for lifting purposes only and side load conditions should be avoided
2. Cylinder is painted in primer paint to RAL5013
3. Refer to www.edbro.com for:-
 - Bracket details
 - Installation instructions that must be observed
 - Correct oil selection
 - An explanation of tipping capacity



CS190E55678B19A01