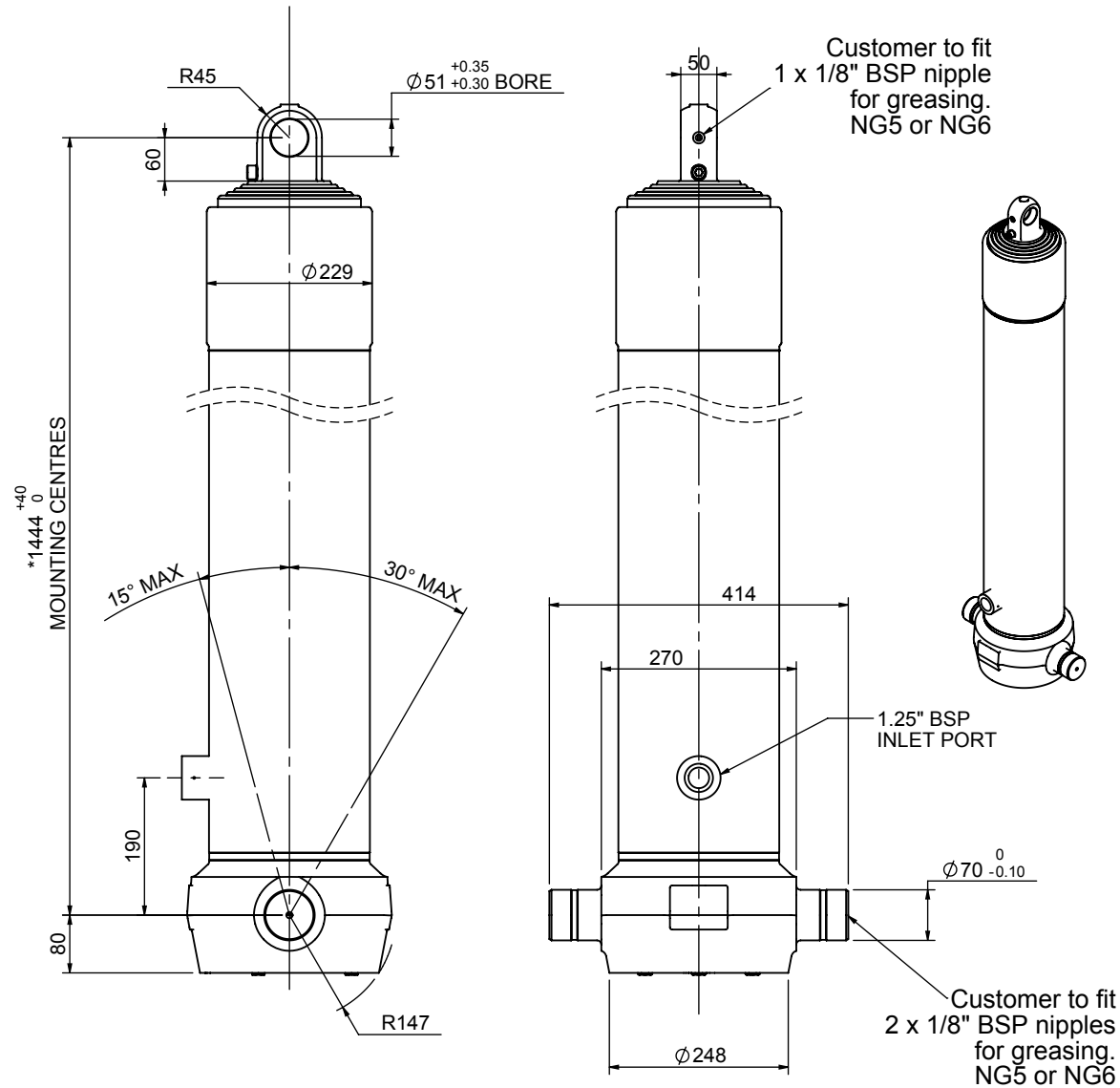


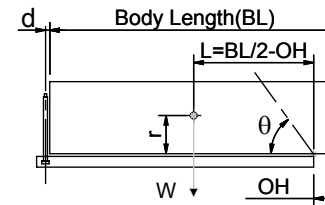
# Cylinder 5 stage front end with plain eye

CS190E55928B19A01



SPECIFICATION		TIPPING CAPACITY : 50 - 75 TONNES***		
Stage	Diameter	Length	Stroke	Swept Volume
-	-	-	-	-
0	223	1428	-	-
1	198	1390	1154	36
2	176	1390	1177	29
3	155	1390	1187	22
4	136	1390	1197	17
5	117	1390	1212	13
Total (+5/-10)			5927	117
Final stroke reduced by	0	Priming Volume		24
Cylinder Mass (Kg)	266	Total Volume (Litres)		141
Maximum Pressure (Bar)	190	Max. first stage thrust		350 KN

### \*\*\*TIPPING CAPACITY AT WORKING PRESSURE



BODY LENGTH (BL)						OH
7250	7750	8250				
57	50°	53	47°	50	44°	150
64	53°	58	49°	54	45°	450
75	56°	66	51°	60	47°	750

d = 0; r = 900; Working Pressure 165 bar

**For guidance only;**  
Higher working pressures and tipping capacities may be possible.  
To check your application email - [applications@edbro.co.uk](mailto:applications@edbro.co.uk)

### NOTES

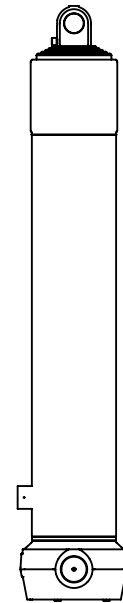
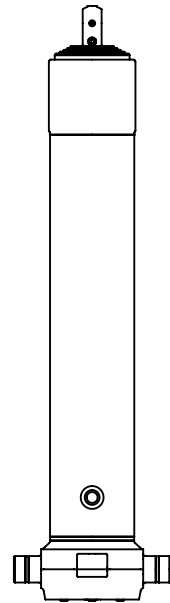
1. This cylinder is for lifting purposes only and side load conditions should be avoided
2. Cylinder is painted in primer paint to RAL5013
3. Refer to [www.edbro.com](http://www.edbro.com) for:-
  - Bracket details
  - Installation instructions that must be observed
  - Correct oil selection
  - An explanation of tipping capacity

\*Includes 10mm Pull Out. Last Stage Chrome Plated



**Edbro plc**  
Nelson Street, Bolton, England, BL3 2JJ  
Tel +44 (0) 1204 528888 Fax +44 (0) 1204 531957  
Email: [postmaster@edbro.com](mailto:postmaster@edbro.com) Web: [www.edbro.com](http://www.edbro.com)

Technical Specifications are subject to change without notice  
Date Created/Updated: 16 July 2012  
Refer [www.edbro.com](http://www.edbro.com) to confirm latest specification  
All dimensions are in 'mm', unless otherwise stated



CS190E55928B19A01