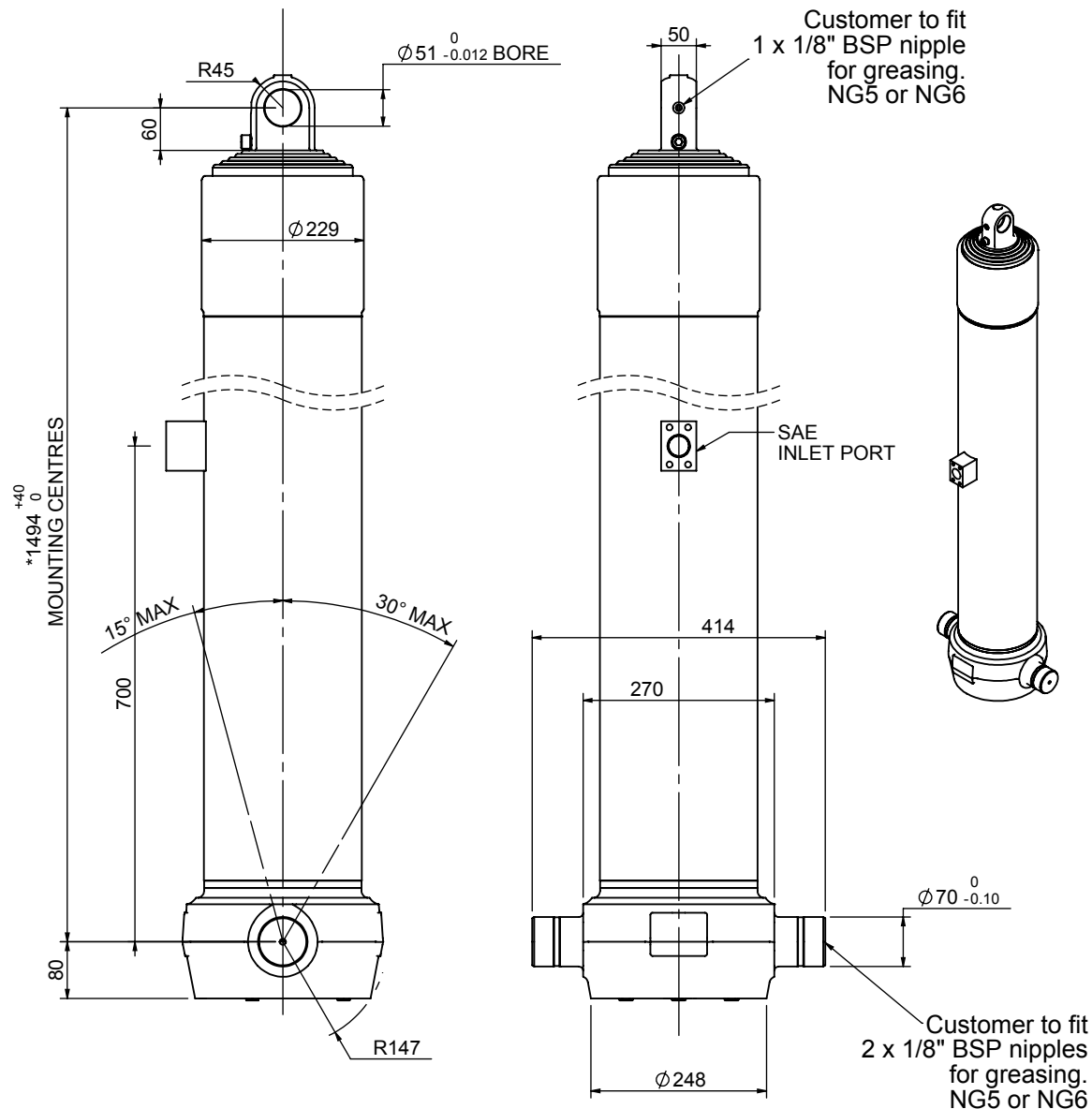


Cylinder 5 stage front end with plain eye



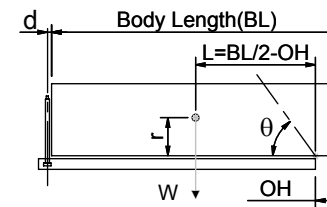
*Includes 10mm Pull Out. All Stages Chrome Plated

CS190E56178S70A01C

SPECIFICATION TIPPING CAPACITY : 45 - 62 TONNES***

Stage	Diameter	Length	Stroke	Swept Volume
-	-	-	-	-
0	223	1478	-	-
1	198	1440	1204	37
2	176	1440	1227	30
3	155	1440	1237	23
4	136	1440	1247	18
5	117	1440	1262	14
Total (+5/-10)			6177	122
Final stroke reduced by	0	Priming Volume		24
Cylinder Mass (Kg)	274.00	Total Volume (Litres)		146
Maximum Pressure (Bar)	190	Max. first stage thrust		350 KN

***TIPPING CAPACITY AT WORKING PRESSURE



	BODY LENGTH (BL)						OH
	7750	8250	8750	7750	8250	8750	
50	49°	47	46°	45	43°	150	
55	51°	51	47°	48	44°	450	
62	54°	56	50°	52	46°	750	

d = 0; r = 900; Working Pressure 150 bar

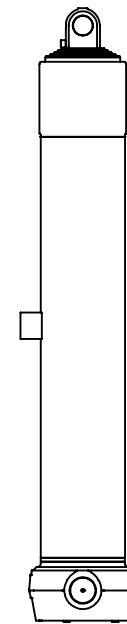
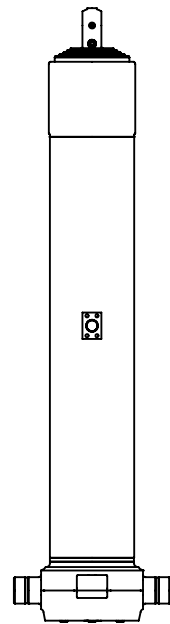
For guidance only;

Higher working pressures and tipping capacities may be possible.

To check your application email - applications@edbro.co.uk

NOTES

1. This cylinder is for lifting purposes only and side load conditions should be avoided
2. Cylinder is painted in primer paint to RAL5013
3. Refer to www.edbro.com for:-
 - Bracket details
 - Installation instructions that must be observed
 - Correct oil selection
 - An explanation of tipping capacity



CS190E56178S70A01C