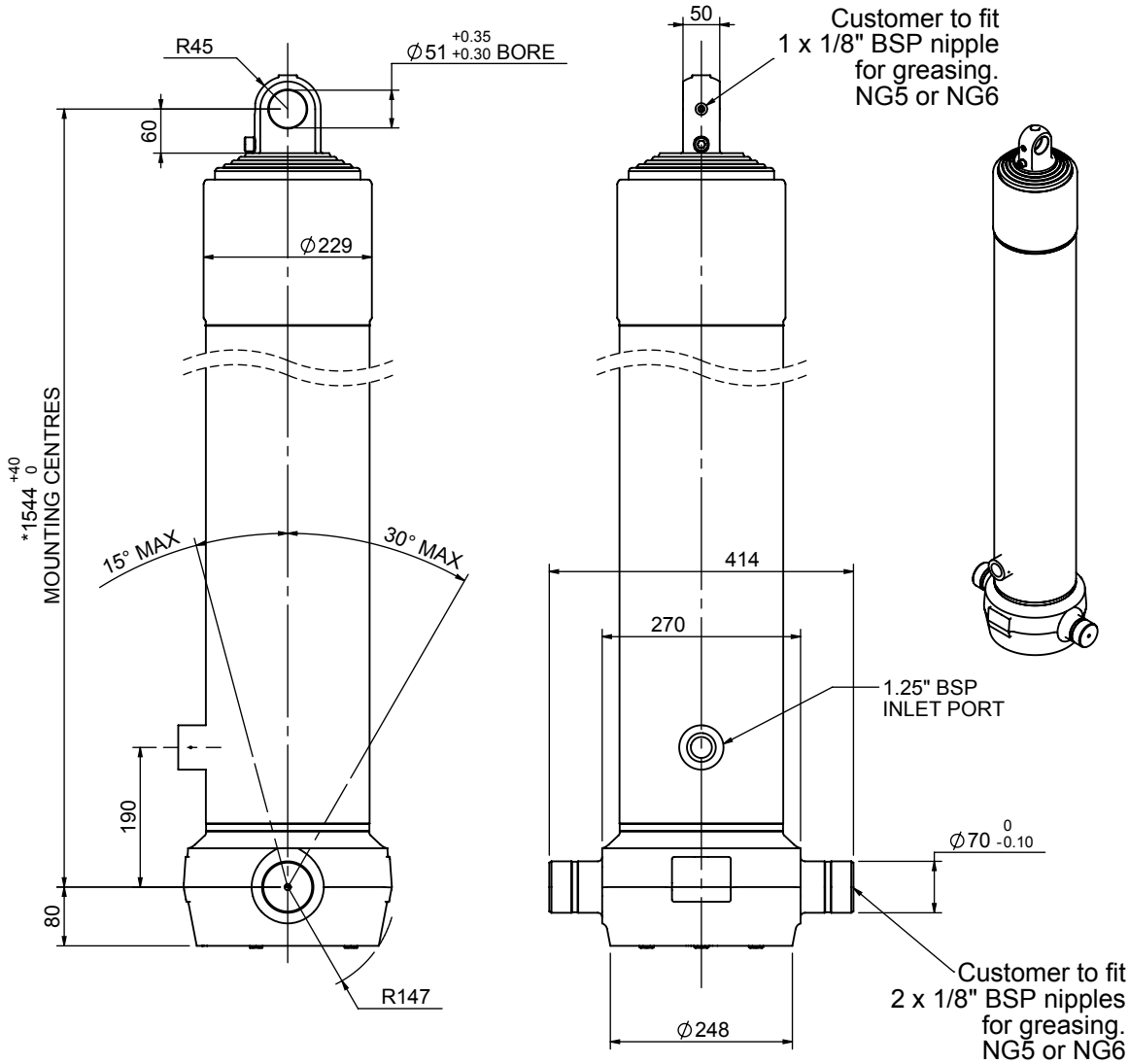


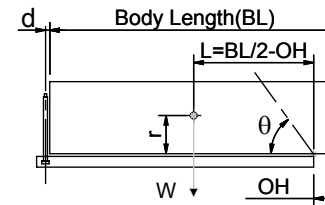
# Cylinder 5 stage front end with plain eye

CS190E56428B19A01



| SPECIFICATION           |          | TIPPING CAPACITY : 45 - 61 TONNES*** |        |              |
|-------------------------|----------|--------------------------------------|--------|--------------|
| Stage                   | Diameter | Length                               | Stroke | Swept Volume |
| -                       | -        | -                                    | -      | -            |
| 0                       | 223      | 1528                                 | -      | -            |
| 1                       | 198      | 1490                                 | 1254   | 39           |
| 2                       | 176      | 1490                                 | 1277   | 31           |
| 3                       | 155      | 1490                                 | 1287   | 24           |
| 4                       | 136      | 1490                                 | 1297   | 19           |
| 5                       | 117      | 1490                                 | 1312   | 14           |
| Total (+5/-10)          |          |                                      | 6427   | 127          |
| Final stroke reduced by | 0        | Priming Volume                       |        | 25           |
| Cylinder Mass (Kg)      | 281      | Total Volume (Litres)                |        | 152          |
| Maximum Pressure (Bar)  | 190      | Max. first stage thrust              |        | 350 KN       |

### \*\*\*TIPPING CAPACITY AT WORKING PRESSURE



|    | BODY LENGTH (BL) |      |      |      |       |       | OH |
|----|------------------|------|------|------|-------|-------|----|
|    | 8000             | 8500 | 9000 | 9500 | 10000 | 10500 |    |
| 50 | 49°              | 47°  | 46°  | 45°  | 43°   | 150   |    |
| 55 | 51°              | 51°  | 48°  | 48°  | 45°   | 450   |    |
| 61 | 54°              | 56°  | 50°  | 52°  | 47°   | 750   |    |

d = 0; r = 900; Working Pressure 150 bar

### For guidance only;

Higher working pressures and tipping capacities may be possible.

To check your application email - [applications@edbro.co.uk](mailto:applications@edbro.co.uk)

### NOTES

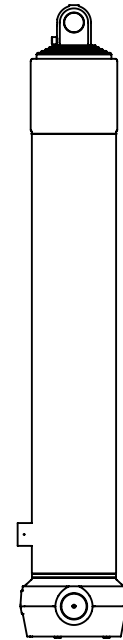
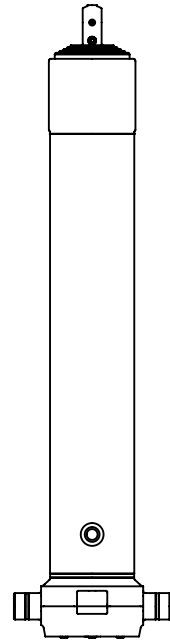
- This cylinder is for lifting purposes only and side load conditions should be avoided
- Cylinder is painted in primer paint to RAL5013
- Refer to [www.edbro.com](http://www.edbro.com) for:-
  - Bracket details
  - Installation instructions that must be observed
  - Correct oil selection
  - An explanation of tipping capacity

\*Includes 10mm Pull Out. Last Stage Chrome Plated



**Edbro plc**  
 Nelson Street, Bolton, England, BL3 2JJ  
 Tel +44 (0) 1204 528888 Fax +44 (0) 1204 531957  
 Email: [postmaster@edbro.com](mailto:postmaster@edbro.com) Web: [www.edbro.com](http://www.edbro.com)

Technical Specifications are subject to change without notice  
 Date Created/Updated: 16 July 2012  
 Refer [www.edbro.com](http://www.edbro.com) to confirm latest specification  
 All dimensions are in 'mm', unless otherwise stated



CS190E56428B19A01