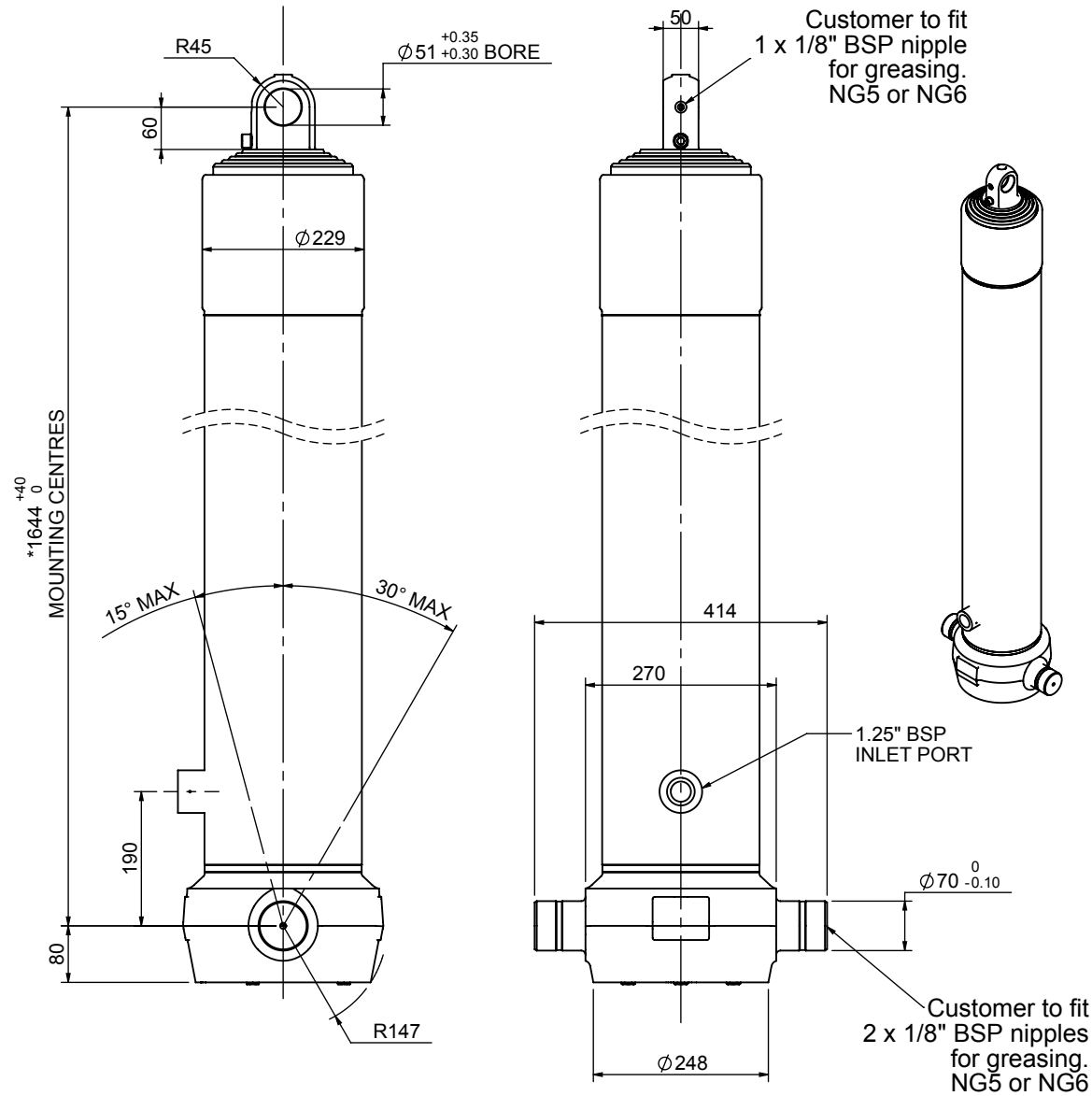


# Cylinder 5 stage front end with plain eye

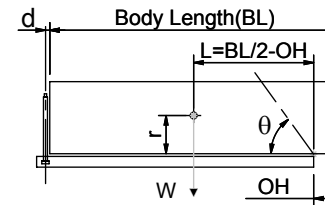


\*Includes 10mm Pull Out. Last Stage Chrome Plated

# CS190E56928B19A01

SPECIFICATION		TIPPING CAPACITY : 36 - 48 TONNES***		
Stage	Diameter	Length	Stroke	Swept Volume
-	-	-	-	-
0	223	1628	-	-
1	198	1590	1354	42
2	176	1590	1377	34
3	155	1590	1387	26
4	136	1590	1397	20
5	117	1590	1412	15
Total (+5/-10)			6927	137
Final stroke reduced by	0	Priming Volume		27
Cylinder Mass (Kg)	297	Total Volume (Litres)		164
Maximum Pressure (Bar)	190	Max. first stage thrust		350 KN

### \*\*\*TIPPING CAPACITY AT WORKING PRESSURE



BODY LENGTH (BL)						OH
8500		9000		9500		
39	50°	37	47°	36	44°	150
43	52°	40	49°	38	46°	450
48	54°	44	51°	41	47°	750

d = 0; r = 900; Working Pressure 120 bar

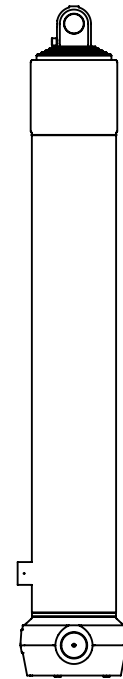
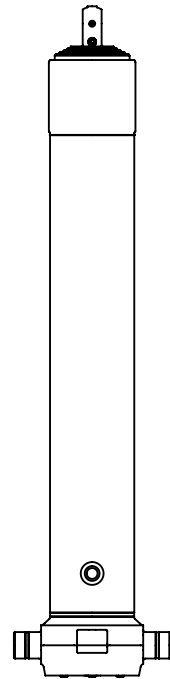
### For guidance only;

Higher working pressures and tipping capacities may be possible.

To check your application email - [applications@edbro.co.uk](mailto:applications@edbro.co.uk)

### NOTES

1. This cylinder is for lifting purposes only and side load conditions should be avoided
2. Cylinder is painted in primer paint to RAL5013
3. Refer to [www.edbro.com](http://www.edbro.com) for:-
  - Bracket details
  - Installation instructions that must be observed
  - Correct oil selection
  - An explanation of tipping capacity



CS190E56928B19A01