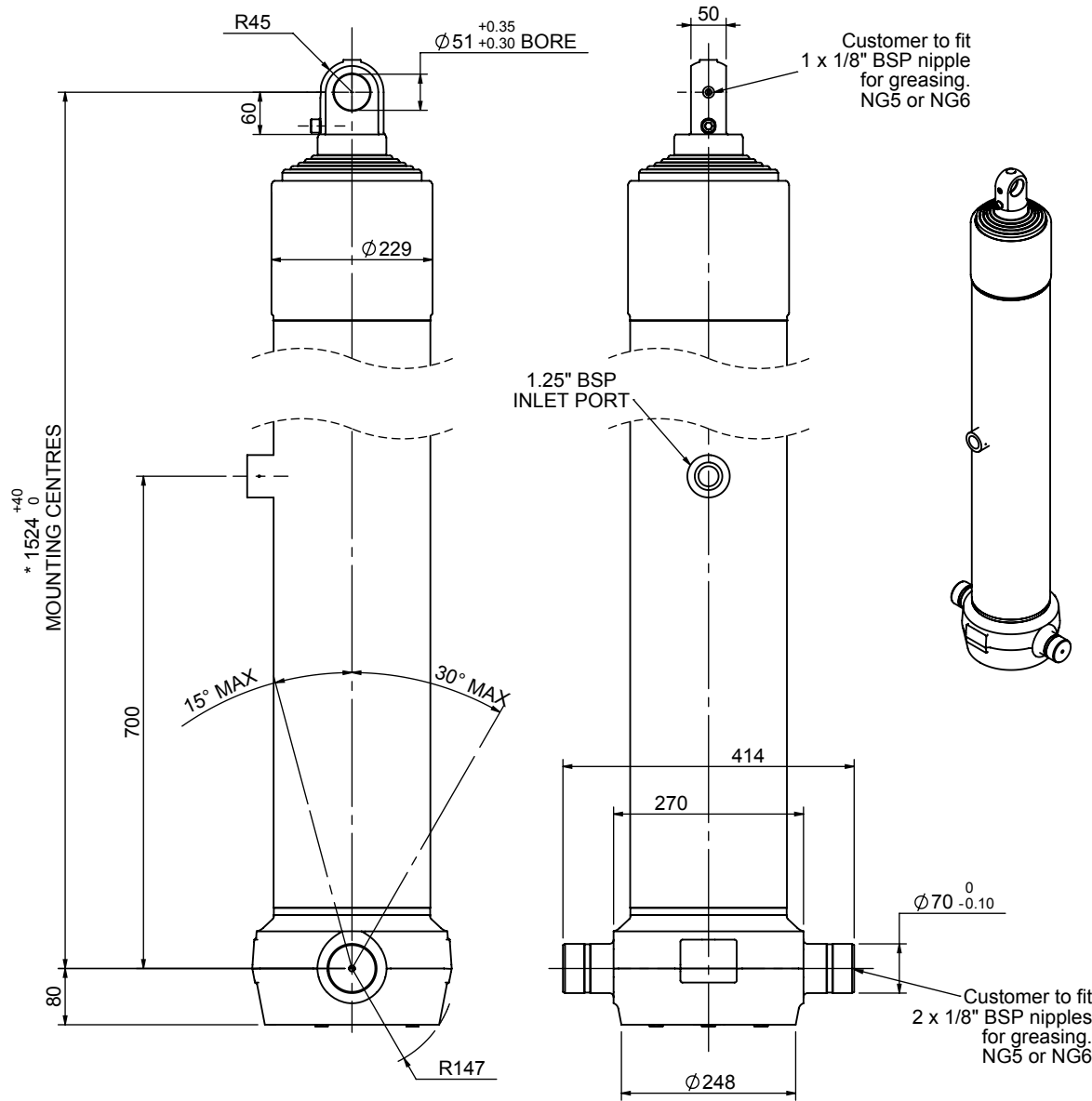


Cylinder 6 stage front end with plain eye

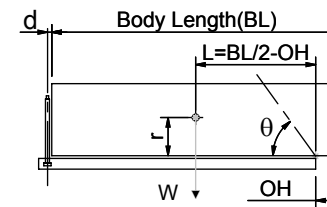


*Includes 10mm Pull Out. Last Stage Chrome Plated

CS190E66995B70K02

| SPECIFICATION | | TIPPING CAPACITY : 30-41 TONNES*** | | |
|-------------------------|----------|------------------------------------|--------|--------------|
| Stage | Diameter | Length | Stroke | Swept Volume |
| 0 | 223 | 1478 | - | - |
| 1 | 198 | 1440 | 1204 | 37 |
| 2 | 176 | 1440 | 1227 | 30 |
| 3 | 155 | 1440 | 1237 | 23 |
| 4 | 136 | 1440 | 1247 | 18 |
| 5 | 117 | 1440 | 1262 | 14 |
| 6 | 98 | 1465 | 817 | 6 |
| | | Total (+5/-10) | 6994 | 128 |
| Final stroke reduced by | 450 | Priming Volume | | 23 |
| Cylinder Mass (Kg) | 290 | Total Volume (Litres) | | 151 |
| Maximum Pressure (Bar) | 190 | Max. first stage thrust | | 350 KN |

***TIPPING CAPACITY AT WORKING PRESSURE



| BODY LENGTH (BL) | | | | | | OH |
|------------------|-----|------|-----|------|-----|-----|
| 8750 | | 9250 | | 9750 | | |
| 33 | 49° | 31 | 46° | 30 | 43° | 150 |
| 37 | 51° | 34 | 48° | 32 | 45° | 450 |
| 41 | 53° | 37 | 49° | 34 | 46° | 750 |

d = 0; r = 900; Working Pressure 135 bar

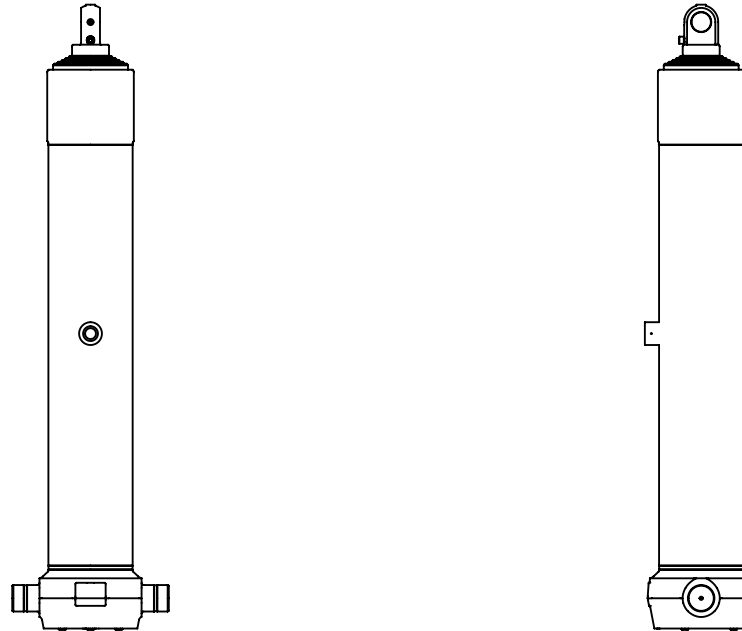
For guidance only;

Higher working pressures and tipping capacities may be possible.

To check your application email - applications@edbro.co.uk

NOTES

1. This cylinder is for lifting purposes only and side load conditions should be avoided
2. Cylinder is painted in primer paint to RAL5013
3. Refer to www.edbro.com for:-
 - Bracket details
 - Installation instructions that must be observed
 - Correct oil selection
 - An explanation of tipping capacity



CS190E66995B70K02