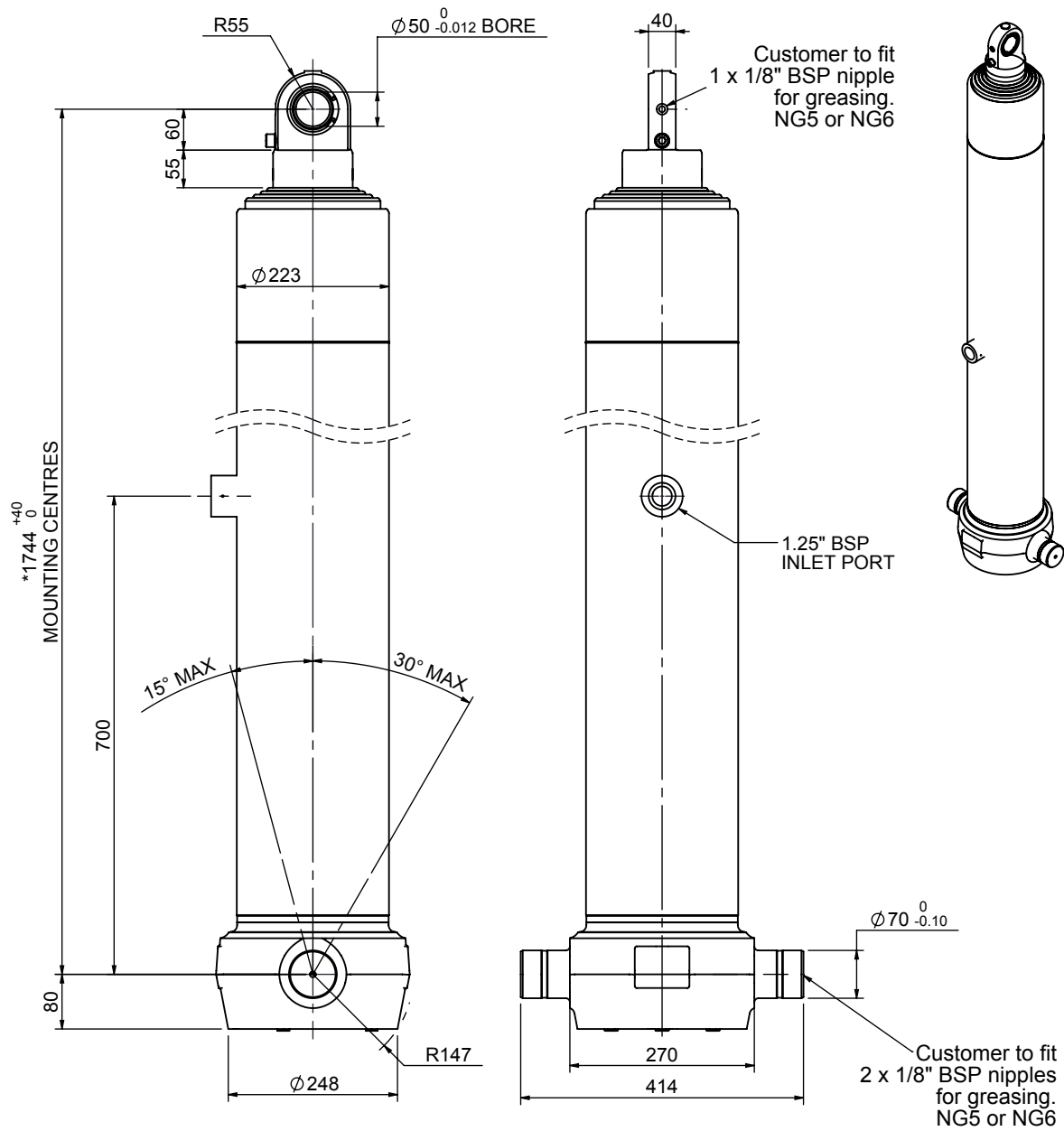


# Cylinder 5 stage front end with spherical eye



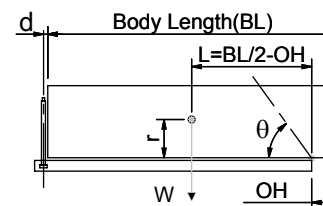
\*Includes 10mm Pull Out. Last Stage Chrome Plated

# CS190S57178B70A03

## SPECIFICATION TIPPING CAPACITY : 36-47 TONNES\*\*\*

Stage	Diameter	Length	Stroke	Swept Volume
-	-	-	-	-
0	223	1678	-	-
1	198	1640	1407	43
2	176	1640	1427	35
3	155	1640	1437	27
4	136	1640	1447	21
5	117	1690	1462	16
Total (+5/-10)			7180	142
Final stroke reduced by	0	Priming Volume		28
Cylinder Mass (Kg)	302	Total Volume (Litres)		170
Maximum Pressure (Bar)	190	Max. first stage thrust		350 KN

## \*\*\*TIPPING CAPACITY AT WORKING PRESSURE



BODY LENGTH (BL)					OH	
8750	9250	9750				
39	50°	37	47°	36	45°	150
43	52°	40	49°	38	46°	450
47	55°	44	51°	41	48°	750

d = 0; r = 900; Working Pressure 120bar

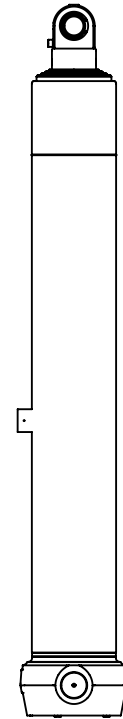
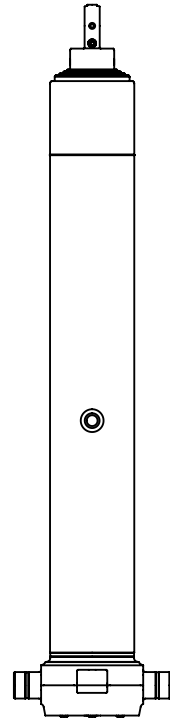
### For guidance only;

Higher working pressures and tipping capacities may be possible.

To check your application email - [applications@edbro.co.uk](mailto:applications@edbro.co.uk)

## NOTES

1. This cylinder is for lifting purposes only and side load conditions should be avoided
2. Cylinder is painted in primer paint to RAL5013
3. Refer to [www.edbro.com](http://www.edbro.com) for:-
  - Bracket details
  - Installation instructions that must be observed
  - Correct oil selection
  - An explanation of tipping capacity



CS190S57178B70A03