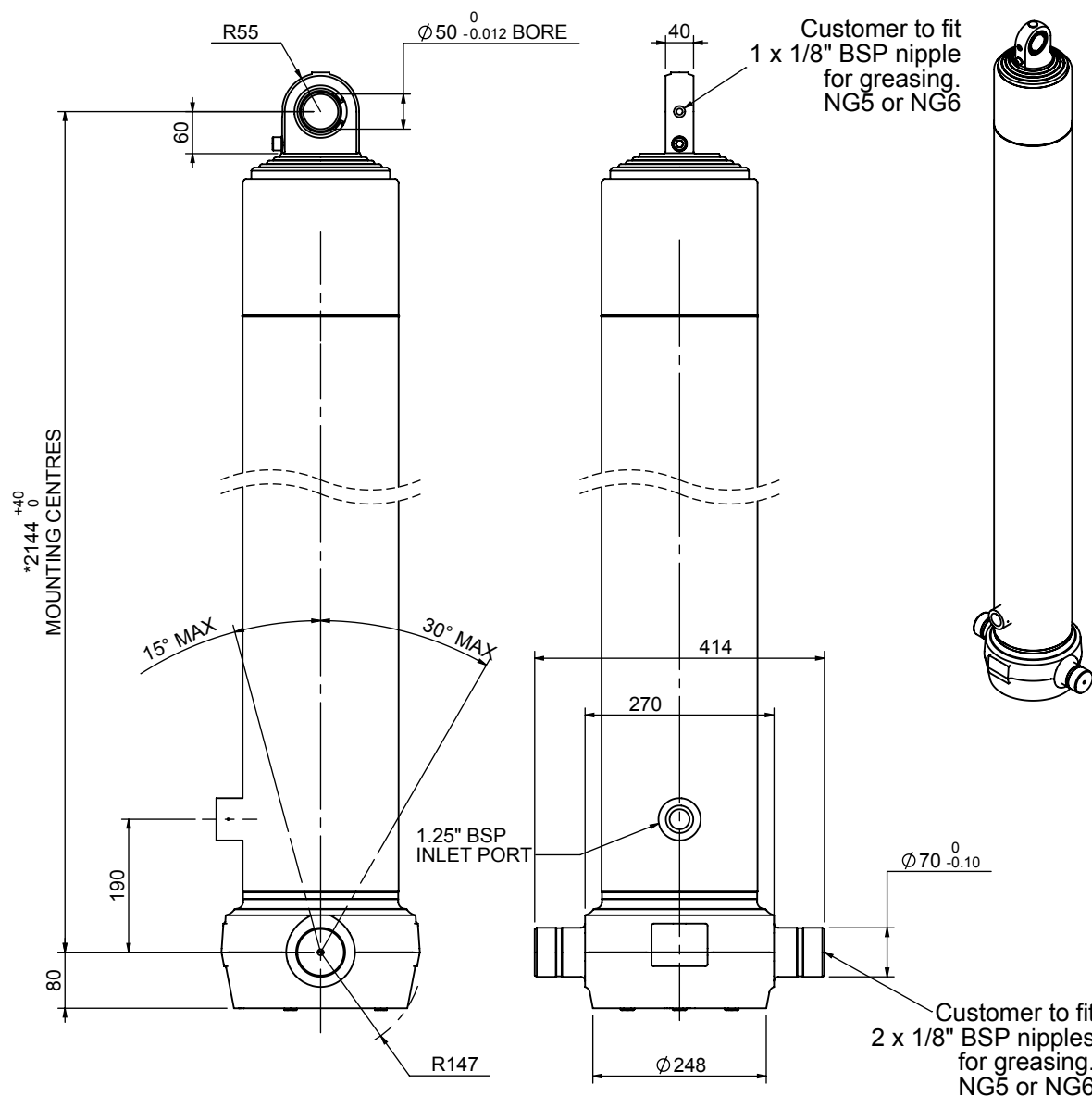


Cylinder 5 stage front end with spherical eye

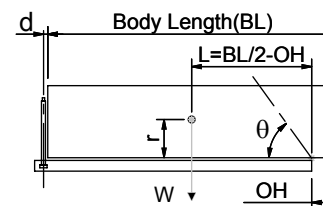


*Includes 10mm Pull Out. All Stages Chrome Plated

CS190S59428B19A01C

SPECIFICATION		TIPPING CAPACITY : 20-24 TONNES***		
Stage	Diameter	Length	Stroke	Swept Volume
-	-	-	-	-
0	223	2128	-	-
1	198	2090	1857	57
2	176	2090	1877	46
3	155	2090	1887	36
4	136	2090	1897	28
5	117	2090	1912	21
Total (+5/-10)			9430	188
Final stroke reduced by	0	Priming Volume		37
Cylinder Mass (Kg)	370	Total Volume (Litres)		225
Maximum Pressure (Bar)	190	Max. first stage thrust		350 KN

***TIPPING CAPACITY AT WORKING PRESSURE



		BODY LENGTH (BL)				OH
		11500	12000	12500		
21	50°	21	48°	20	46°	150
23	52°	22	49°	21	47°	450
24	53°	23	51°	22	48°	750

d = 0; r = 900; Working Pressure 70 bar

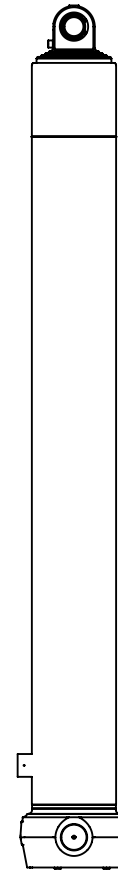
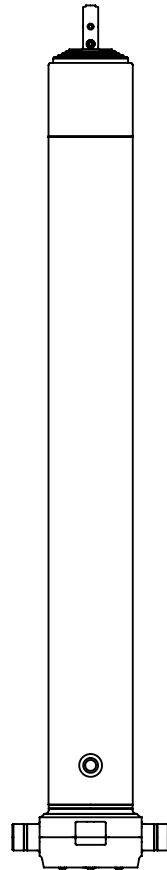
For guidance only;

Higher working pressures and tipping capacities may be possible.

To check your application email - applications@edbro.co.uk

NOTES

1. This cylinder is for lifting purposes only and side load conditions should be avoided
2. Cylinder is painted in primer paint to RAL5013
3. Refer to www.edbro.com for:-
 - Bracket details
 - Installation instructions that must be observed
 - Correct oil selection
 - An explanation of tipping capacity



CS190S59428B19A01C