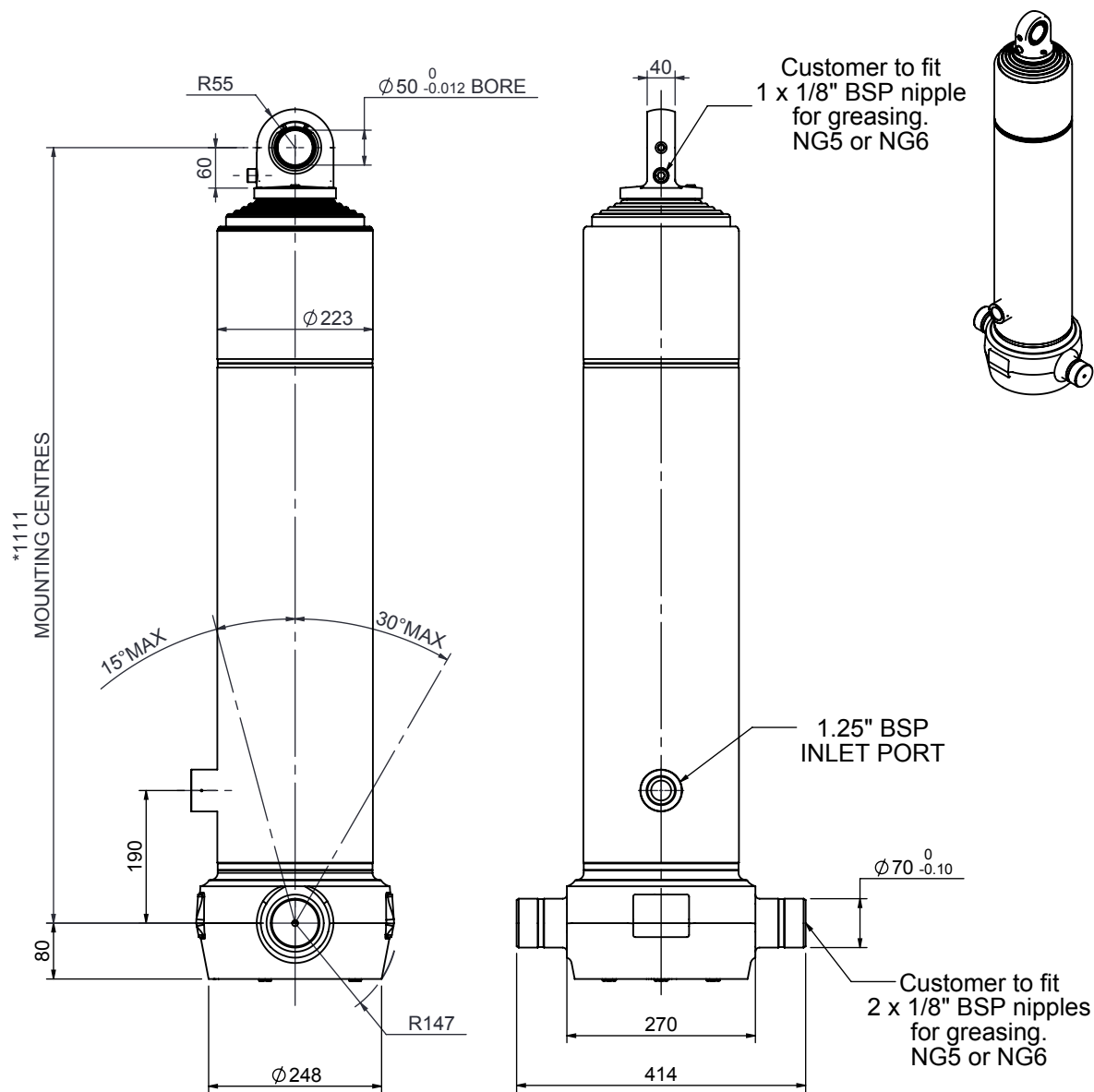


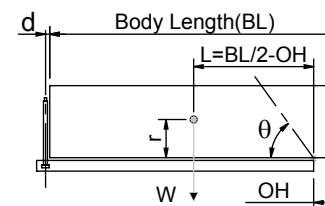
# Cylinder 6 stage front end with spherical eye



# CS190S65045B19A01C

SPECIFICATION		TIPPING CAPACITY : 36-54 TONNES***		
Stage	Diameter	Length	Stroke	Swept Volume
0	223	1078	-	-
1	198	1040	805	25
2	176	1040	827	20
3	155	1040	837	16
4	136	1040	847	12
5	117	1040	862	9
6	98	1040	867	7
Total (+5/-10)			5045	89
Final stroke reduced by	0	Priming Volume		16.2
Cylinder Mass (Kg)	217	Total Volume (Litres)		105.2
Maximum Pressure (Bar)	190	Max. first stage thrust		350 KN

### \*\*\*TIPPING CAPACITY AT WORKING PRESSURE



BODY LENGTH (BL)						OH
6750	7250	7750				
41	46°	38	42°	36	39°	150
46	48°	42	44°	39	41°	450
54	51°	47	46°	43	43°	750

d = 0; r = 900; Working Pressure 170 bar

### For guidance only;

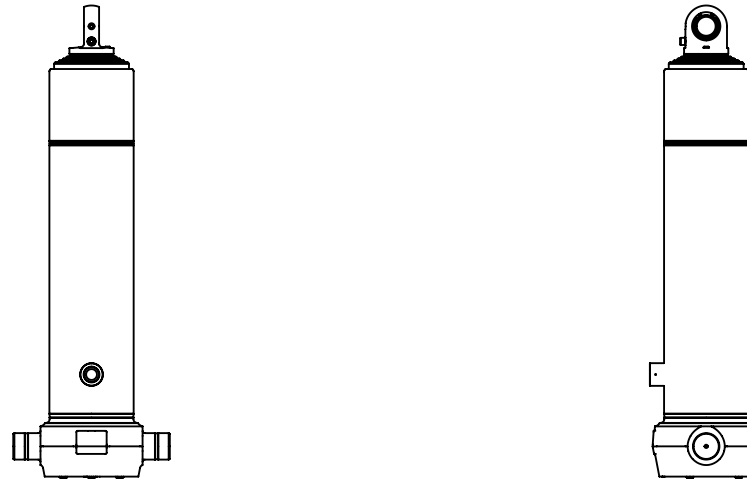
Higher working pressures and tipping capacities may be possible.

To check your application email - [applications@edbro.co.uk](mailto:applications@edbro.co.uk)

### NOTES

1. This cylinder is for lifting purposes only and side load conditions should be avoided
2. Cylinder is painted in primer paint to RAL5013
3. Refer to [www.edbro.com](http://www.edbro.com) for:-
  - Bracket details
  - Installation instructions that must be observed
  - Correct oil selection
  - An explanation of tipping capacity

\*Includes 12mm Pull Out. All Stages Chrome Plated



CS190S65045B19A01C