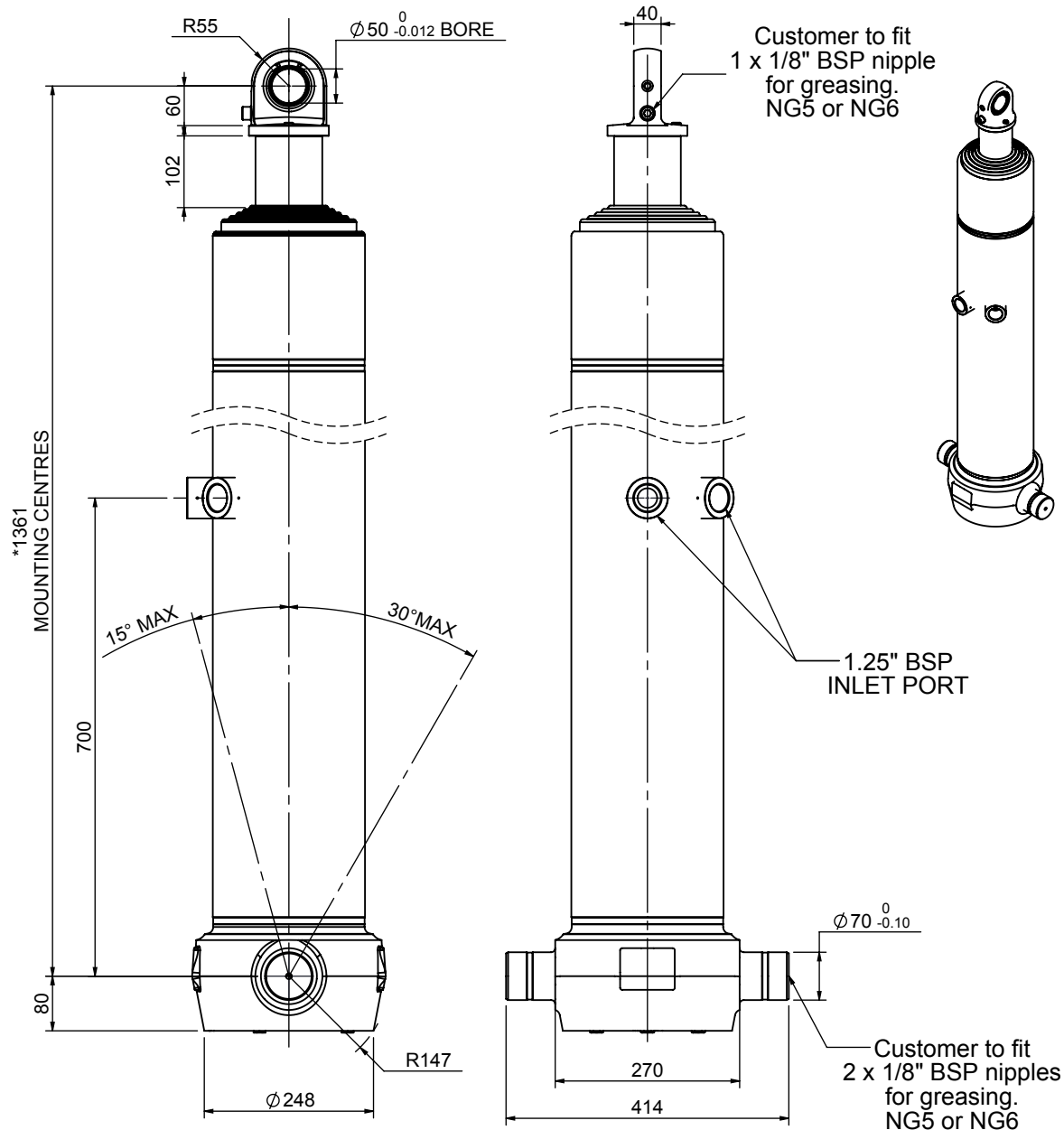


Cylinder 6 stage front end with spherical eye

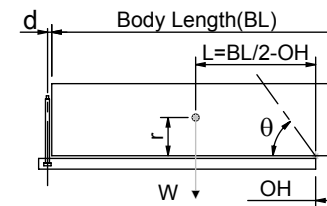


*Includes 10mm Pull Out. Last Stage Chrome Plated

CS190S65945T70A05

SPECIFICATION		TIPPING CAPACITY : 32-47 TONNES***		
Stage	Diameter	Length	Stroke	Swept Volume
0	223	1228	-	-
1	198	1190	955	29
2	176	1190	977	24
3	155	1190	987	19
4	136	1190	997	14
5	117	1190	1012	11
6	98	1290	1017	8
Total (+5/-10)			5945	105
Final stroke reduced by	0	Priming Volume	19.6	
Cylinder Mass (Kg)	250	Total Volume (Litres)	124.6	
Maximum Pressure (Bar)	190	Max. first stage thrust	350 kN	

***TIPPING CAPACITY AT WORKING PRESSURE



BODY LENGTH (BL)						OH
7500		8000		8500		
36	49°	34	45°	32	42°	150
41	51°	47	47°	35	44°	450
47	53°	49	49°	38	46°	750

d = 0; r = 900; Working Pressure 150 bar

For guidance only;

Higher working pressures and tipping capacities may be possible.

To check your application email - applications@edbro.co.uk

NOTES

1. This cylinder is for lifting purposes only and side load conditions should be avoided
2. Cylinder is painted in primer paint to RAL5013
3. Refer to www.edbro.com for:-
 - Bracket details
 - Installation instructions that must be observed
 - Correct oil selection
 - An explanation of tipping capacity



JOST UK Ltd
 Edbro House, Nelson Street, Bolton, England, BL3 2JJ
 Tel +44 (0) 1204 528888 Fax +44 (0) 1204 531957
 Email: sales@jost-world.com Web: www.edbro.com

Technical Specifications are subject to change without notice
 Date Created/Updated: 16 January 2019
 Refer www.edbro.com to confirm latest specification
 All dimensions are in 'mm', unless otherwise stated