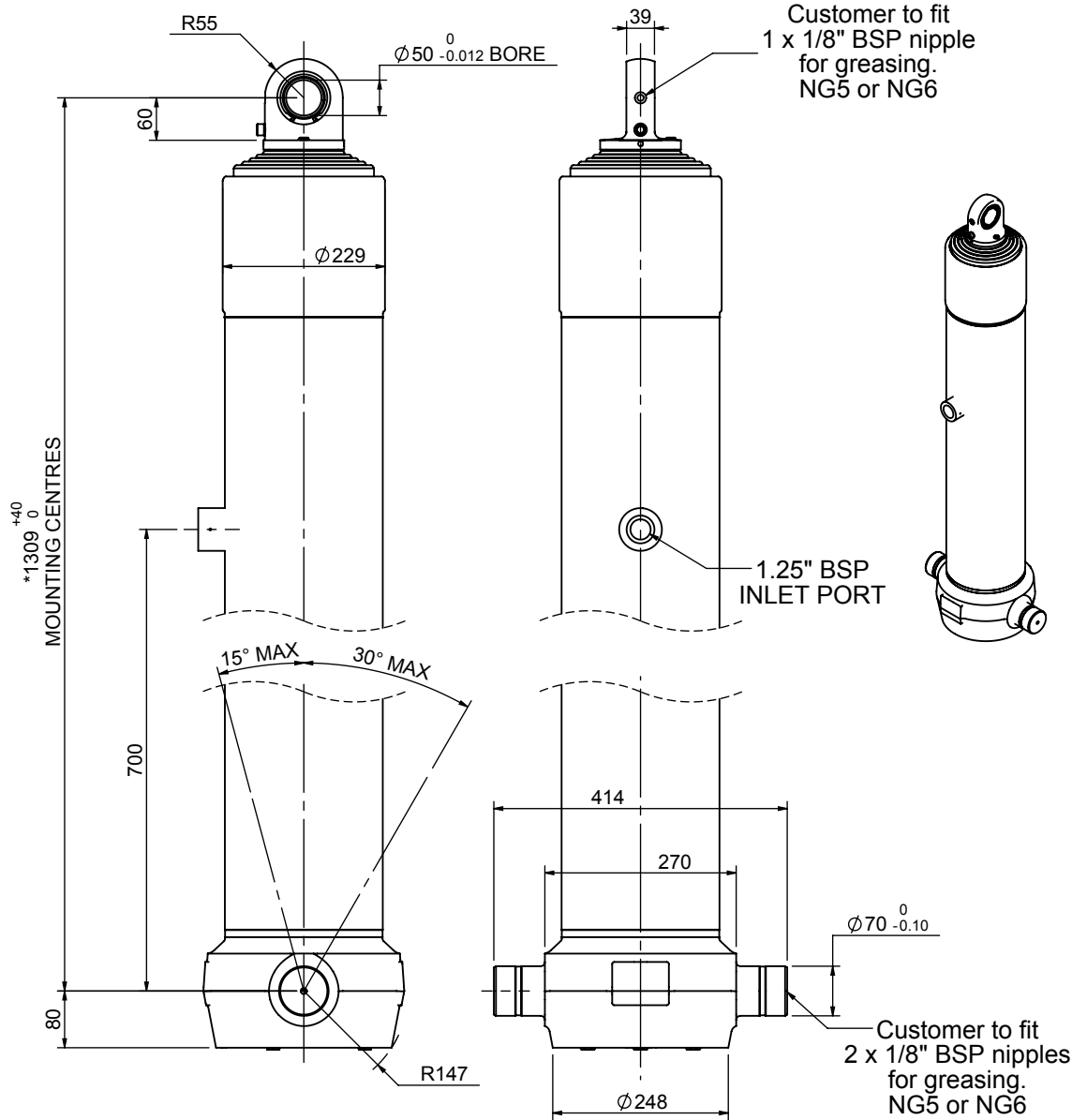


# Cylinder 6 stage front end with spherical eye

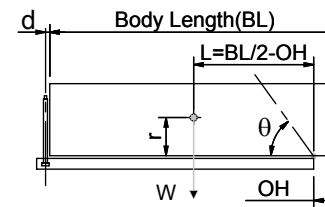
CS190S66245B70A01



## SPECIFICATION

SPECIFICATION		TIPPING CAPACITY : 32-47 TONNES***		
Stage	Diameter	Length	Stroke	Swept Volume
0	223	1278	-	-
1	198	1240	1004	31
2	176	1240	1027	25
3	155	1240	1037	20
4	136	1240	1047	15
5	117	1240	1062	11
6	98	1240	1067	8
Total (+5/-10)			6244	110
Final stroke reduced by	0	Priming Volume		19
Cylinder Mass (Kg)	260	Total Volume (Litres)		129
Maximum Pressure (Bar)	190	Max. first stage thrust		350 kN

## \*\*\*TIPPING CAPACITY AT WORKING PRESSURE



BODY LENGTH (BL)						OH
7750		8250		8750		
36	49°	34	46°	32	43°	150
41	52°	37	48°	35	45°	450
47	54°	42	50°	38	47°	750

d = 0; r = 900; Working Pressure 150 bar

### For guidance only;

Higher working pressures and tipping capacities may be possible.

To check your application email - [applications@edbro.co.uk](mailto:applications@edbro.co.uk)

## NOTES

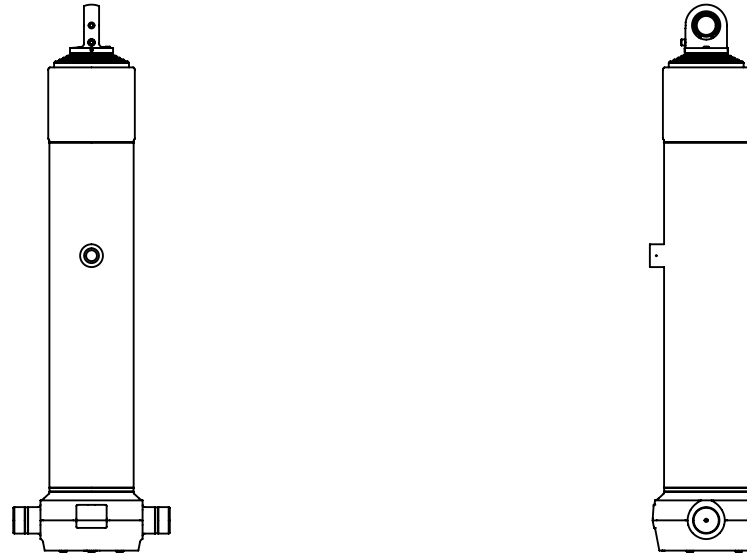
1. This cylinder is for lifting purposes only and side load conditions should be avoided
2. Cylinder is painted in primer paint to RAL5013
3. Refer to [www.edbro.com](http://www.edbro.com) for:-
  - Bracket details
  - Installation instructions that must be observed
  - Correct oil selection
  - An explanation of tipping capacity

\*Includes 10mm Pull Out. Last Stage Chrome Plated



**Edbro plc**  
 Nelson Street, Bolton, England, BL3 2JJ  
 Tel +44 (0) 1204 528888 Fax +44 (0) 1204 531957  
 Email: [postmaster@edbro.com](mailto:postmaster@edbro.com) Web: [www.edbro.com](http://www.edbro.com)

Technical Specifications are subject to change without notice  
 Date Created/Updated: 16 July 2012  
 Refer [www.edbro.com](http://www.edbro.com) to confirm latest specification  
 All dimensions are in 'mm', unless otherwise stated



CS190S66245B70A01