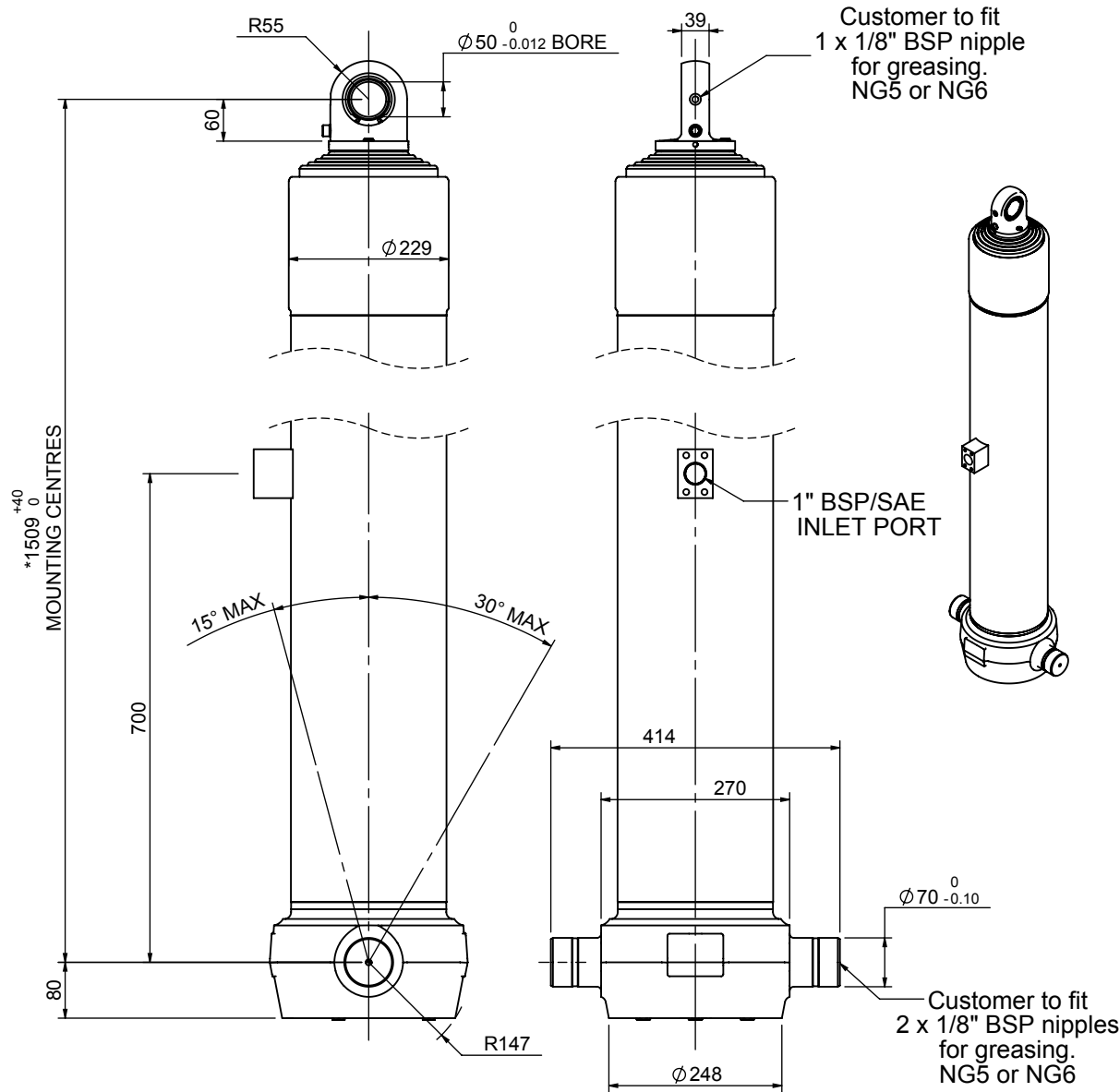


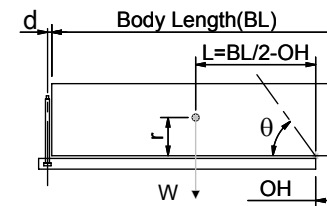
Cylinder 6 stage front end with spherical eye

CS190S67445S70A01



SPECIFICATION		TIPPING CAPACITY : 23-30 TONNES***		
Stage	Diameter	Length	Stroke	Swept Volume
0	223	1478	-	-
1	198	1440	1204	37
2	176	1440	1227	30
3	155	1440	1237	23
4	136	1440	1247	18
5	117	1440	1262	14
6	98	1440	1267	10
Total (+5/-10)			7444	132
Final stroke reduced by	0	Priming Volume		23
Cylinder Mass (Kg)	293	Total Volume (Litres)		155
Maximum Pressure (Bar)	190	Max. first stage thrust		350 KN

***TIPPING CAPACITY AT WORKING PRESSURE



BODY LENGTH (BL)						OH
9250		9750		10250		
25	49°	24	46°	23	44°	150
28	51°	26	48°	25	45°	450
30	53°	28	50°	26	47°	750

d = 0; r = 900; Working Pressure 110 bar

For guidance only;
Higher working pressures and tipping capacities may be possible.
To check your application email - applications@edbro.co.uk

NOTES

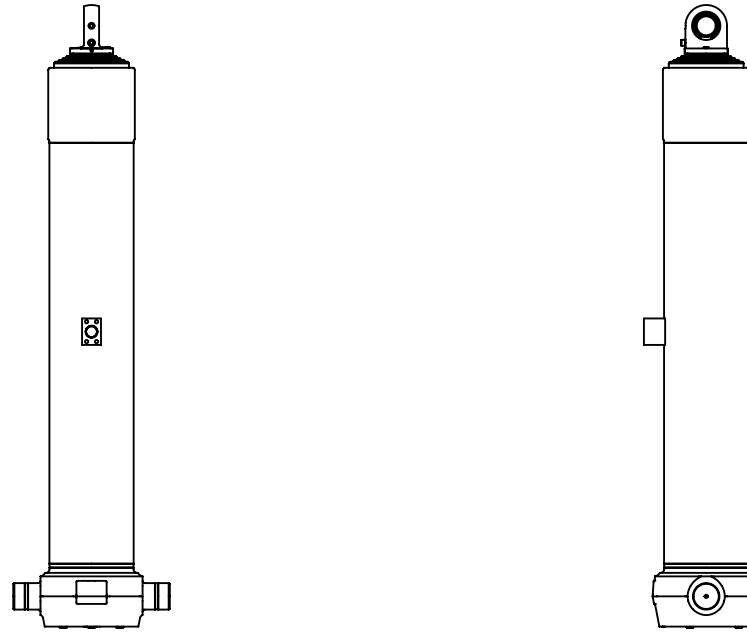
1. This cylinder is for lifting purposes only and side load conditions should be avoided
2. Cylinder is painted in primer paint to RAL5013
3. Refer to www.edbro.com for:-
 - Bracket details
 - Installation instructions that must be observed
 - Correct oil selection
 - An explanation of tipping capacity

*Includes 10mm Pull Out. Last Stage Chrome Plated



Edbro plc
Nelson Street, Bolton, England, BL3 2JJ
Tel +44 (0) 1204 528888 Fax +44 (0) 1204 531957
Email: postmaster@edbro.com Web: www.edbro.com

Technical Specifications are subject to change without notice
Date Created/Updated: 09 October 2012
Refer www.edbro.com to confirm latest specification
All dimensions are in 'mm', unless otherwise stated



CS190S67445S70A01