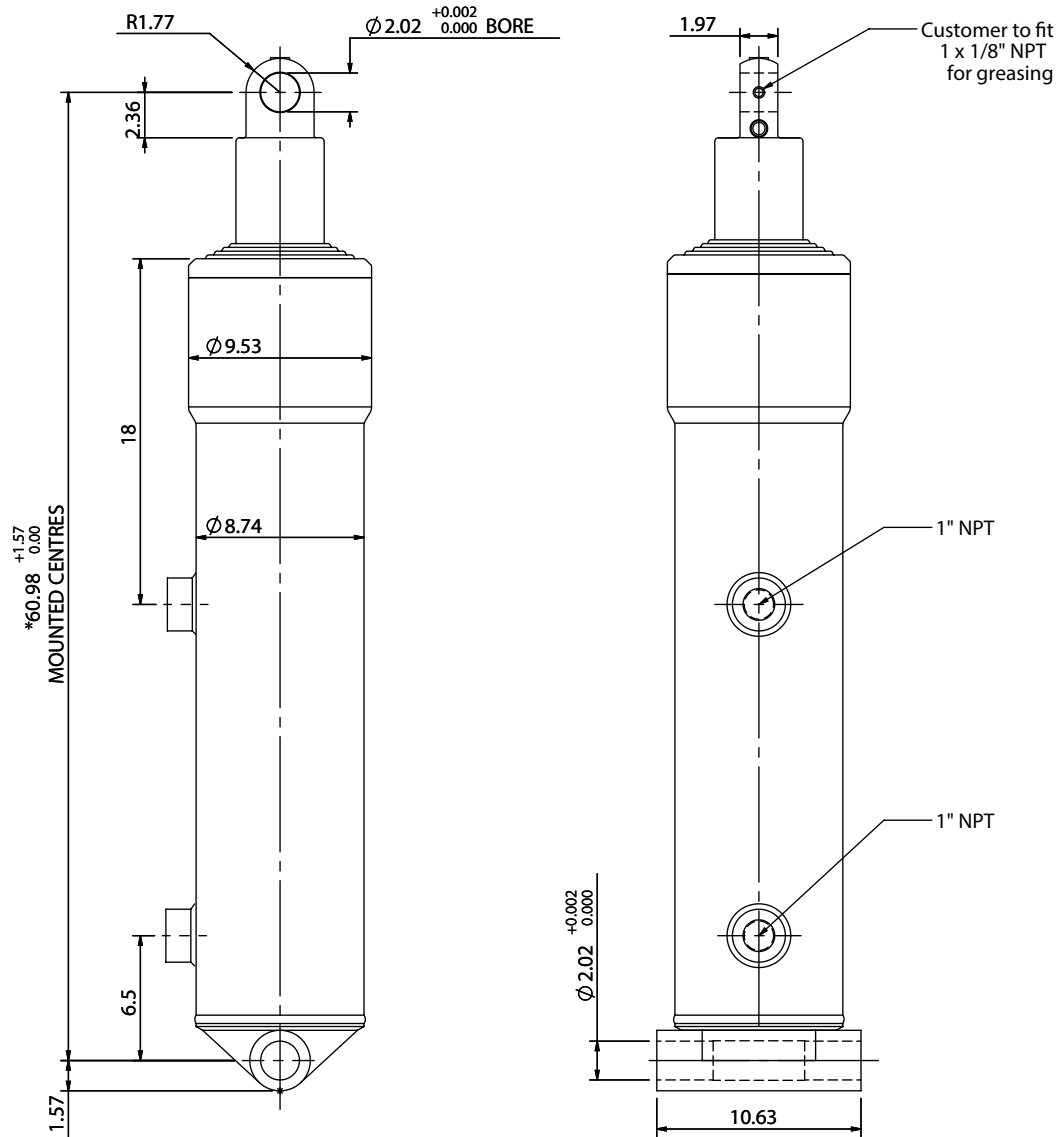


# Cylinder 5 stage front end with plain eye

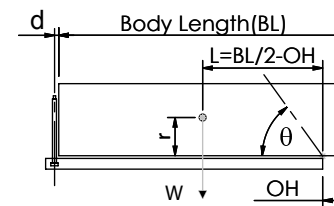


\*Includes 0.4" Pull Out. Last Stage Chrome Plated

# CS19EE505678A502

SPECIFICATION		TIPPING CAPACITY : 46-70 TONS***		
Stage	Diameter	Length	Stroke	Swept Volume
-	-	-	-	-
0	8.76	51.97	-	-
1	7.80	52.76	43.50	9.0
2	6.93	52.76	44.37	7.1
3	6.10	52.76	44.76	5.5
4	5.35	52.76	45.16	4.5
5	4.61	54.72	45.75	3.2
Total (+0.2/-0.4)			223.54	29.3
Final stroke reduced by	0.00	Priming Volume		5.9
Cylinder Mass (lb)	486	Total Volume (US gal)		35.2
Maximum Pressure (PSI)	2200	Max. first stage thrust		32

## \*\*\*TIPPING CAPACITY AT WORKING PRESSURE



BODY LENGTH (BL) ft						OH Inches
23	25	26	27	28	29	
58	50°	54	46°	51	43°	6
66	53°	60	48°	55	45°	18
77	55°	67	51°	61	47°	30

d = 0; r = 35.5; Working Pressure 2200 PSI

For guidance only;  
Higher working pressures and tipping capacities may be possible.  
To check your application email - [applications@edbro.co.uk](mailto:applications@edbro.co.uk)

## NOTES

1. This cylinder is for lifting purposes only and side load conditions should be avoided
2. Cylinder is painted in primer paint to RAL5013
3. Refer to [www.edbro.com](http://www.edbro.com) for:-
  - Bracket details
  - Installation instructions that must be observed
  - Correct oil selection
  - An explanation of tipping capacity