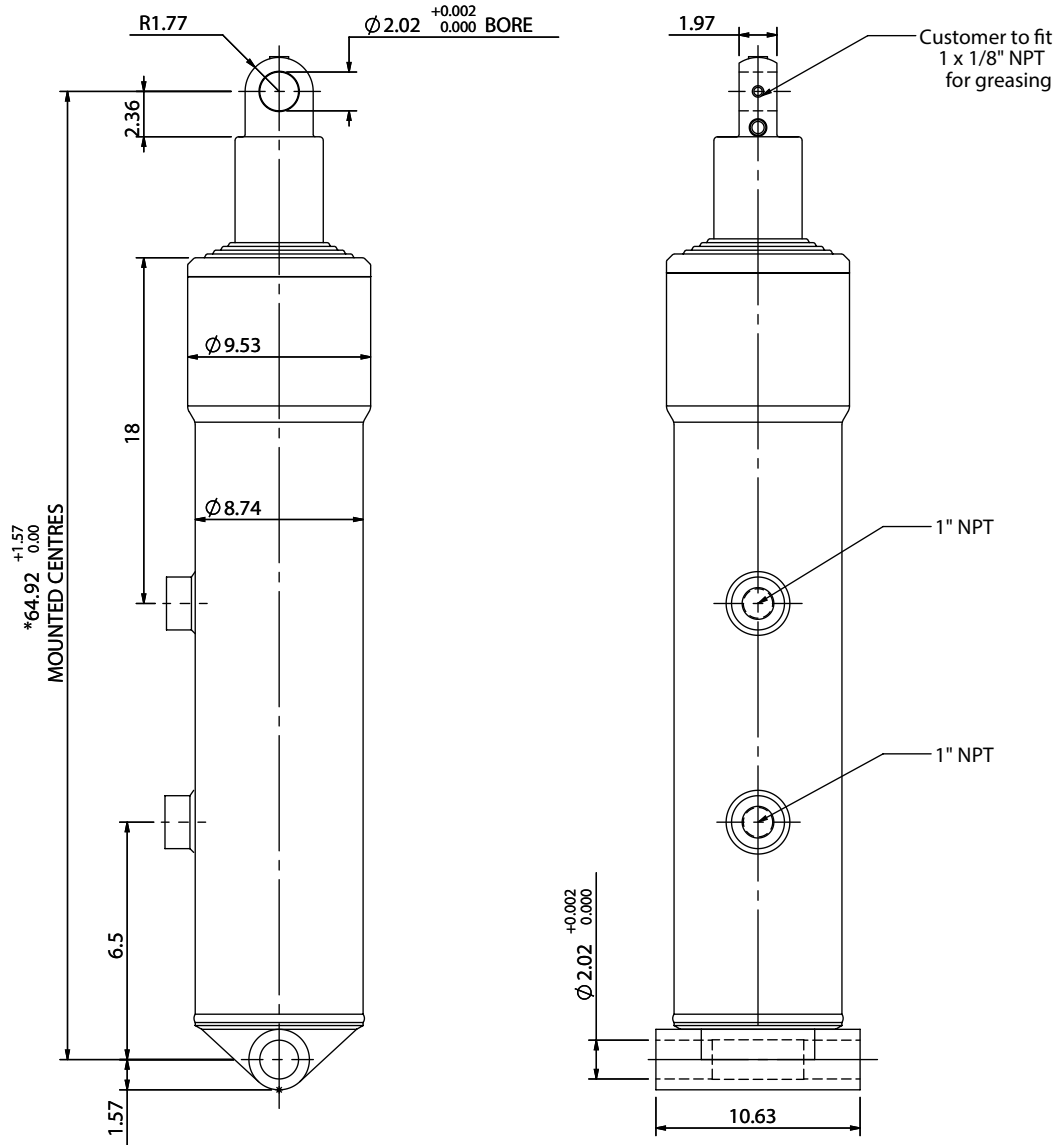


Cylinder 5 stage front end with plain eye

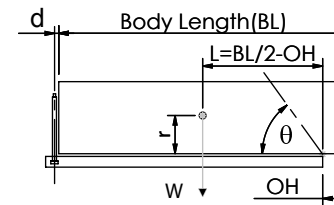


*Includes 0.4" Pull Out. Last Stage Chrome Plated

CS19EE505928A496

SPECIFICATION		TIPPING CAPACITY : 46-68 TONS***		
Stage	Diameter	Length	Stroke	Swept Volume
-	-	-	-	-
0	8.76	53.94	-	-
1	7.80	54.72	45.47	9.5
2	6.93	54.72	46.34	7.7
3	6.10	54.72	46.73	5.8
4	5.35	54.72	47.13	4.5
5	4.61	58.66	47.72	3.4
Total (+0.2/-0.4)			233.39	30.9
Final stroke reduced by	0.00	Priming Volume		6.6
Cylinder Mass (lb)	505	Total Volume (US gal)		37.5
Maximum Pressure (PSI)	2200	Max. first stage thrust		32

***TIPPING CAPACITY AT WORKING PRESSURE



		BODY LENGTH (BL) ft			OH Inches	
		24	27	29		
53	50°	50	46°	46	43°	6
60	53°	54	49°	51	45°	18
68	55°	61	50°	55	47°	30

$d = 0$; $r = 35.5$; Working Pressure 2000 PSI

For guidance only;
Higher working pressures and tipping capacities may be possible.
To check your application email - applications@edbro.co.uk

NOTES

- This cylinder is for lifting purposes only and side load conditions should be avoided
- Cylinder is painted in primer paint to RAL5013
- Refer to www.edbro.com for:
 - Bracket details
 - Installation instructions that must be observed
 - Correct oil selection
 - An explanation of tipping capacity