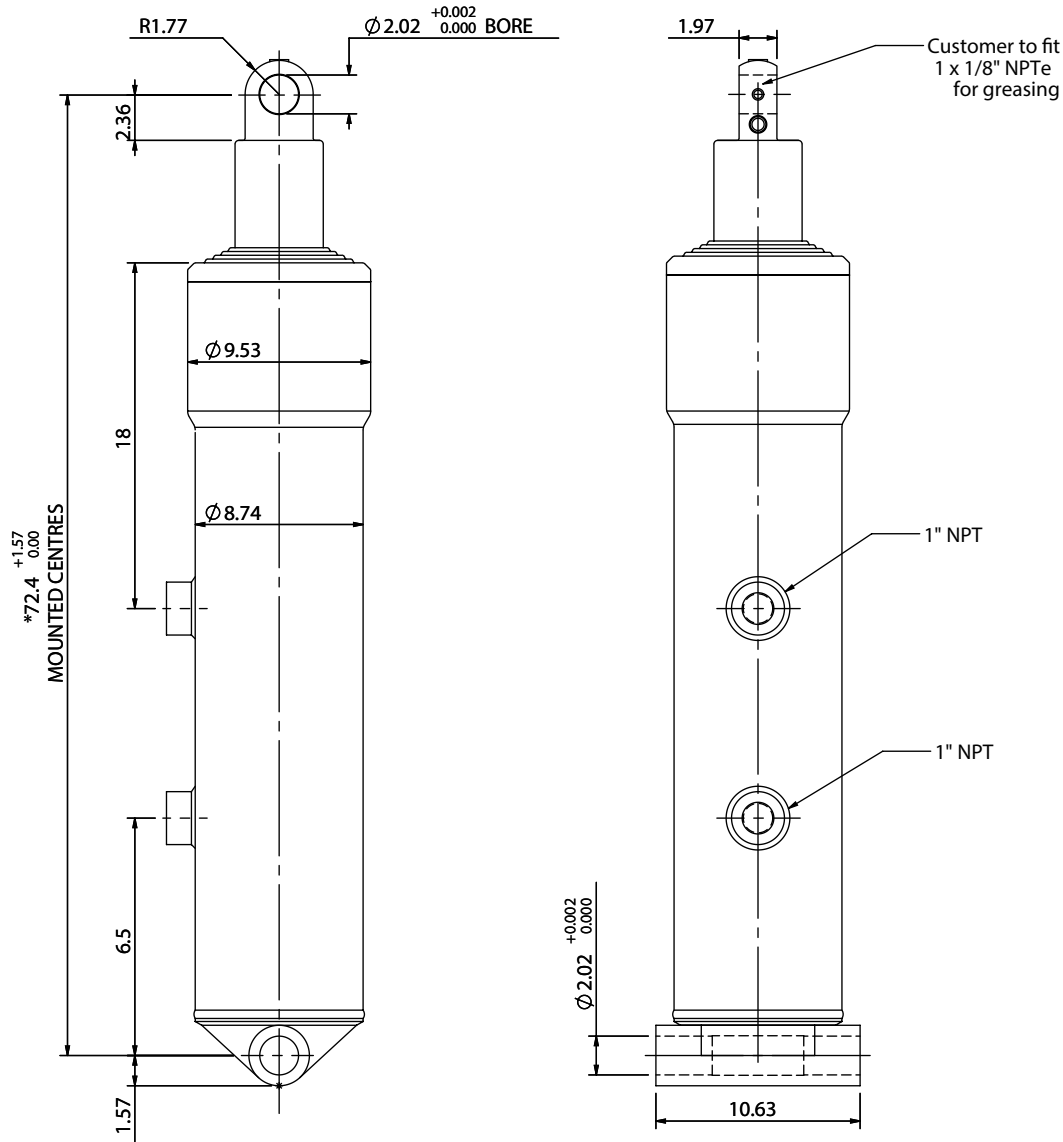


Cylinder 5 stage front end with plain eye

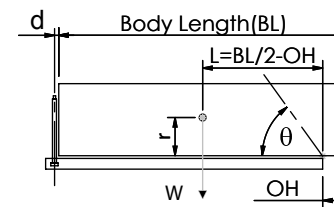


*Includes 0.4" Pull Out. Last Stage Chrome Plated

CS19EE506678A497

SPECIFICATION		TIPPING CAPACITY : 46-66 TONS***		
Stage	Diameter	Length	Stroke	Swept Volume
-	-	-	-	-
0	8.76	59.84	-	-
1	7.80	60.63	51.38	10.6
2	6.93	60.63	52.24	8.4
3	6.10	60.63	52.64	6.6
4	5.35	60.63	53.03	5.3
5	4.61	66.14	53.62	4.0
		Total (+0.2/-0.4)	262.91	34.9
Final stroke reduced by	0.00	Priming Volume	6.9	
Cylinder Mass (lb)	567	Total Volume (US gal)	41.8	
Maximum Pressure (PSI)	2200	Max. first stage thrust	32	

***TIPPING CAPACITY AT WORKING PRESSURE



BODY LENGTH (BL) ft						OH Inches
26	28	30	26	28	30	
53	52°	50	48°	46	45°	6
58	54°	54	50°	51	47°	18
66	56°	60	52°	55	49°	30

$d = 0$; $r = 35.5$; Working Pressure 2000 PSI

For guidance only;
Higher working pressures and tipping capacities may be possible.
To check your application email - applications@edbro.co.uk

NOTES

- This cylinder is for lifting purposes only and side load conditions should be avoided
- Cylinder is painted in primer paint to RAL5013
- Refer to www.edbro.com for:-
 - Bracket details
 - Installation instructions that must be observed
 - Correct oil selection
 - An explanation of tipping capacity