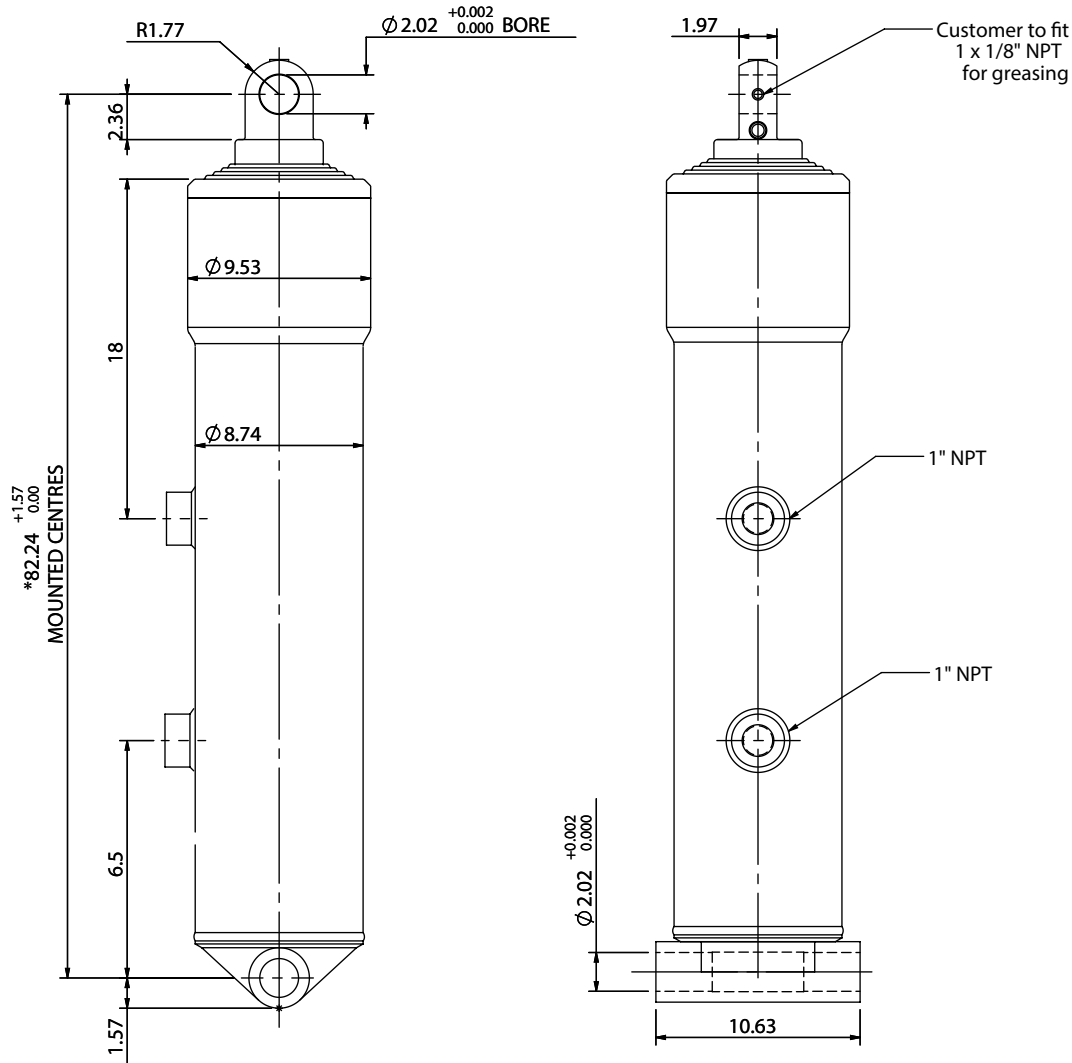


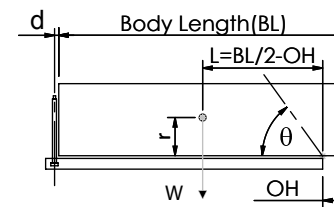
Cylinder 5 stage front end with plain eye



CS19EE507678A493

SPECIFICATION		TIPPING CAPACITY : 36-50 TONS***		
Stage	Diameter	Length	Stroke	Swept Volume
-	-	-	-	-
0	8.76	73.62	-	-
1	7.80	74.41	65.16	13.5
2	6.93	74.41	66.02	10.8
3	6.10	74.41	66.42	8.4
4	5.35	74.41	66.81	6.6
5	4.61	75.98	67.40	4.8
Total (+0.2/-0.4)			302.28	44.1
Final stroke reduced by	29.53	Priming Volume		8.7
Cylinder Mass (lb)	697	Total Volume (US gal)		52.8
Maximum Pressure (PSI)	2200	Max. first stage thrust		32

***TIPPING CAPACITY AT WORKING PRESSURE



		BODY LENGTH (BL) ft			OH Inches	
		30	32	34		
41	51°	37	48°	36	45°	6
44	53°	41	50°	39	47°	18
50	55°	45	52°	42	49°	30

$d = 0; r = 35.5$; Working Pressure 1500 PSI

For guidance only;
Higher working pressures and tipping capacities may be possible.
To check your application email - applications@edbro.co.uk

NOTES

- This cylinder is for lifting purposes only and side load conditions should be avoided
- Cylinder is painted in primer paint to RAL5013
- Refer to www.edbro.com for:
 - Bracket details
 - Installation instructions that must be observed
 - Correct oil selection
 - An explanation of tipping capacity

*Includes 0.4" Pull Out. Last Stage Chrome Plated



Jost UK Ltd
Nelson Street, Bolton, England, BL3 2JJ
Tel +44 (0) 1204 528888 Fax +44 (0) 1204 531957
Email: postmaster@edbro.com Web: www.edbro.com

Technical Specifications are subject to change without notice
Date Created/Updated: 01 May 2015
Refer www.edbro.com to confirm latest specification
All dimensions are in 'inches', unless otherwise stated