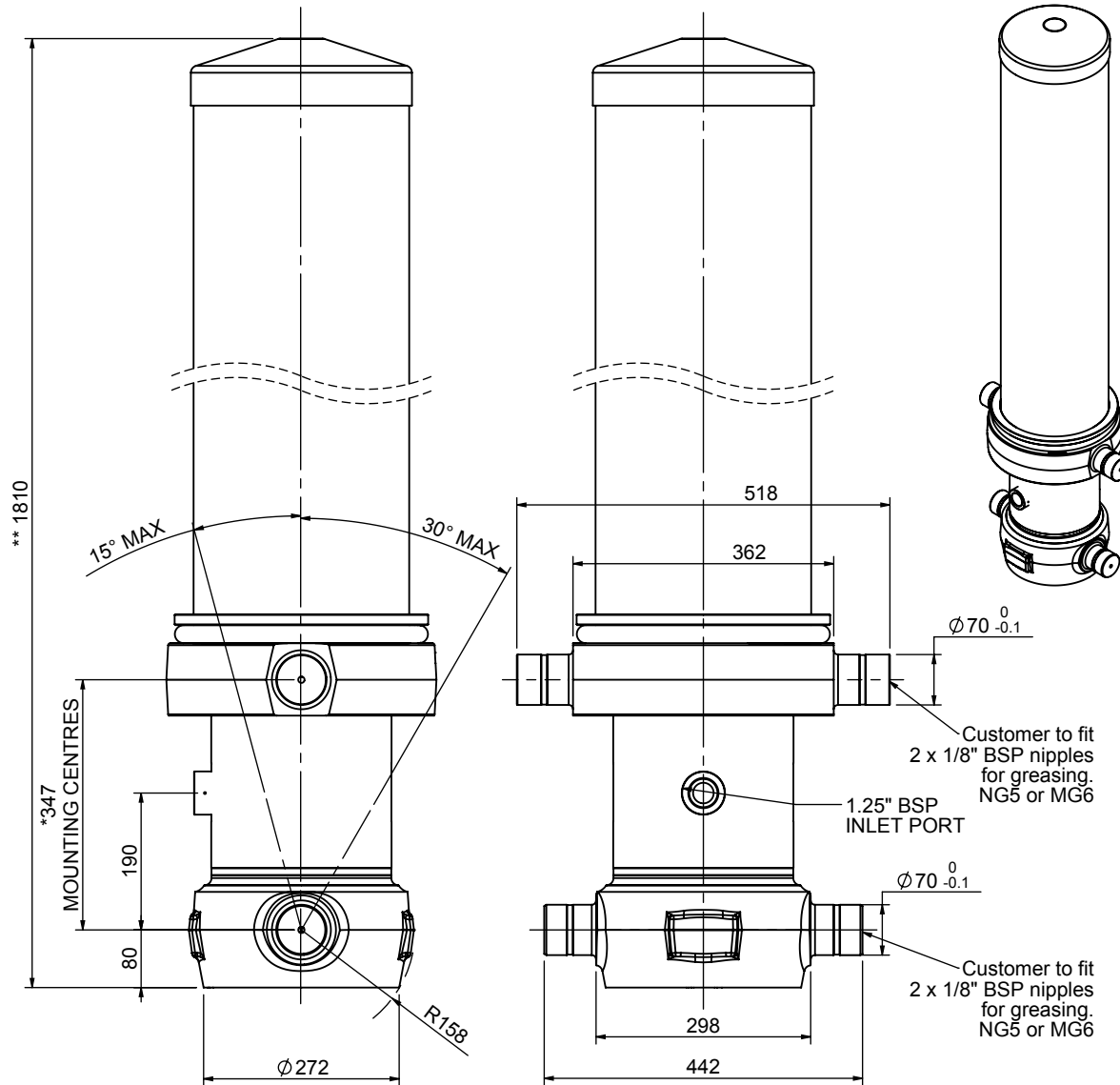


Cylinder 5 stage front end with outer cover

**ALLOW 50mm TO REMOVE CAP FOR SERVICING

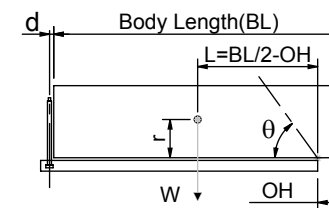


*Includes 11mm Pull Out.

CS220057130B19A11

SPECIFICATION		TIPPING CAPACITY : 71-96 TONNES***		
Stage	Diameter	Length	Stroke	Swept Volume
OUTER COVER	299	1345	-	-
0	250	1678	-	-
1	222	1640	1399	54
2	198	1640	1418	44
3	176	1640	1427	35
4	155	1640	1437	27
5	136	1640	1447	21
Total (+5/-10)			7128	181
Final stroke reduced by	0	Priming Volume		18
Cylinder Mass (Kg)	488	Total Volume (Litres)		199
Maximum Pressure (Bar)	190	Max. first stage thrust		400 KN

***TIPPING CAPACITY AT WORKING PRESSURE



BODY LENGTH (BL)						OH
9000	9200	9400				
76	48°	73	47°	71	46°	500
84	50°	81	49°	78	48°	800
96	52°	91	51°	87	50°	1100

d = 0; r = 1200; Working Pressure 146 bar

Tipping angle (θ)
Body + payload mass, W (tonne)

For guidance only;

Higher working pressures and tipping capacities may be possible.
To check your application email - applications@edbro.co.uk

NOTES

1. This cylinder is for lifting purposes only and side load conditions should be avoided
2. Cylinder is painted in primer paint to RAL5013
3. Refer to www.edbro.com for:-
 - Bracket details
 - Installation instructions that must be observed
 - Correct oil selection
 - An explanation of tipping capacity



JOST UK Ltd
Edbro House, Nelson Street, Bolton, England, BL3 2JJ
Tel +44 (0) 1204 528888 Fax +44 (0) 1204 531957
Email: sales@jost-world.com Web: www.edbro.com

Technical Specifications are subject to change without notice
Date Created/Updated: 16 March 2020
Refer www.edbro.com to confirm latest specification
All dimensions are in 'mm', unless otherwise stated