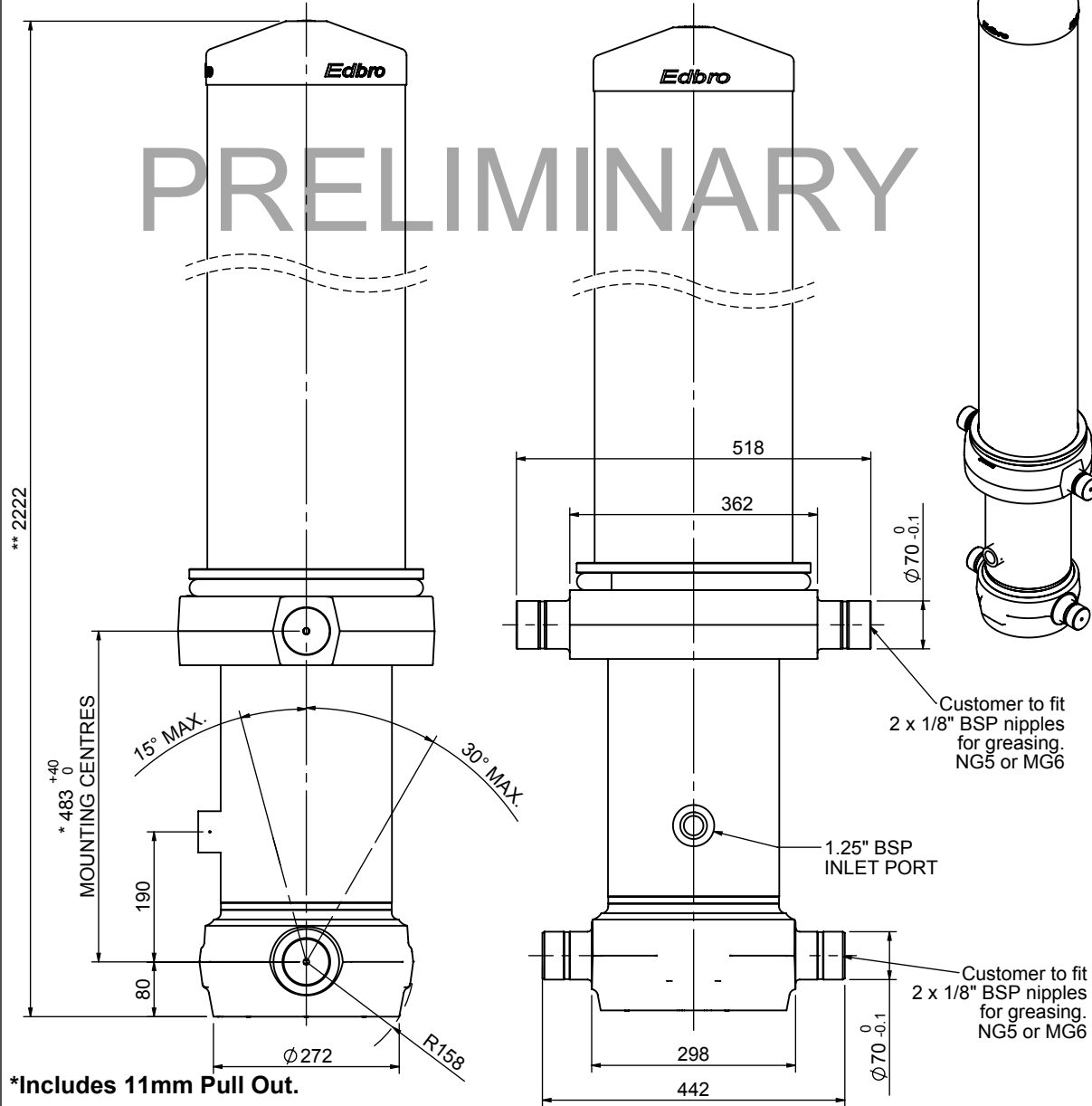


Cylinder 5 stage front end with outer cover

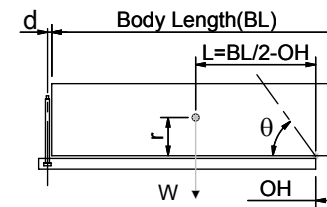
**ALLOW 50mm TO REMOVE CAP FOR SERVICING



CS220059130B19A18

SPECIFICATION		TIPPING CAPACITY : 63-79 TONNES***		
Stage	Diameter	Length	Stroke	Swept Volume
OUTER COVER	289	1595	-	-
0	250	2078	-	-
1	222	2040	1800	70
2	198	2040	1818	56
3	176	2040	1827	44
4	155	2040	1837	35
5	136	2040	1847	27
Total (+5/-10)			9129	232
Final stroke reduced by	0	Priming Volume		23
Cylinder Mass (Kg)	564	Total Volume (Litres)		255
Maximum Pressure (Bar)	190	Max. first stage thrust		350 KN

***TIPPING CAPACITY AT WORKING PRESSURE



BODY LENGTH (BL)						OH
11000		11500		12000		
68	49°	65	47°	63	45°	200
73	50°	69	48°	66	46°	500
79	52°	74	49°	71	47°	800

d = 0; r = 1200; Working Pressure 150 bar

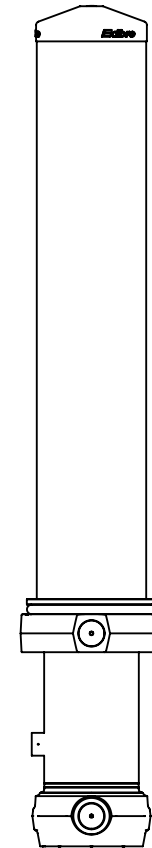
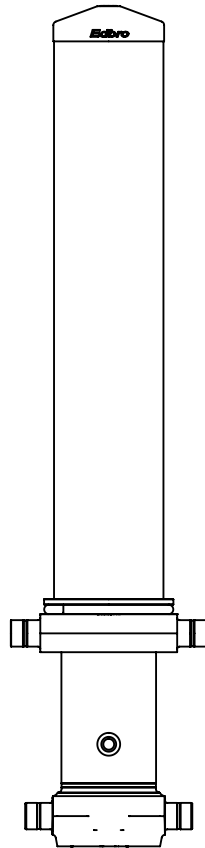
Tipping angle (θ)
Body + payload mass, W (tonne)

For guidance only;

Higher working pressures and tipping capacities may be possible.
To check your application email - applications@edbro.co.uk

NOTES

1. This cylinder is for lifting purposes only and side load conditions should be avoided
2. Cylinder is painted in primer paint to RAL5013
3. Refer to www.edbro.com for:-
 - Bracket details
 - Installation instructions that must be observed
 - Correct oil selection
 - An explanation of tipping capacity



CS220059130B19A18