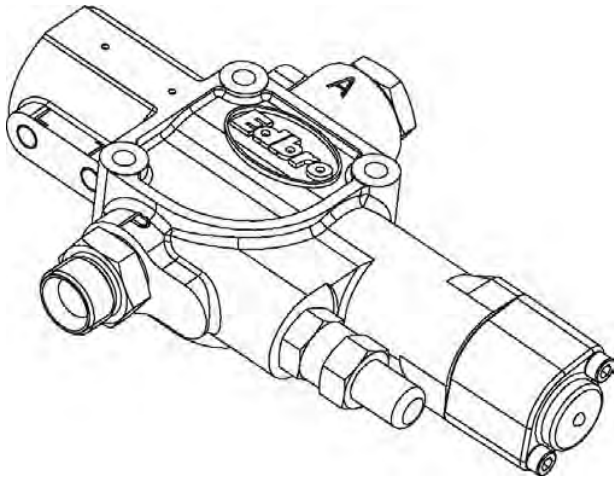
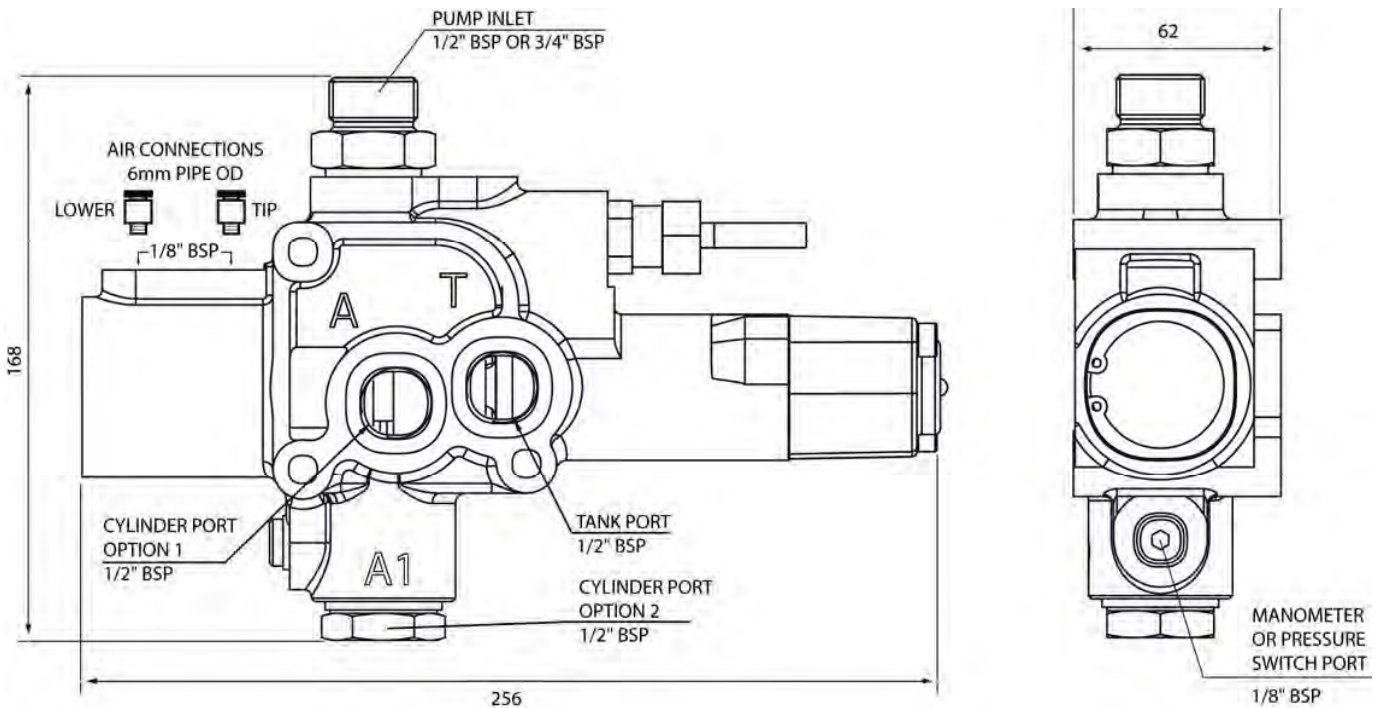


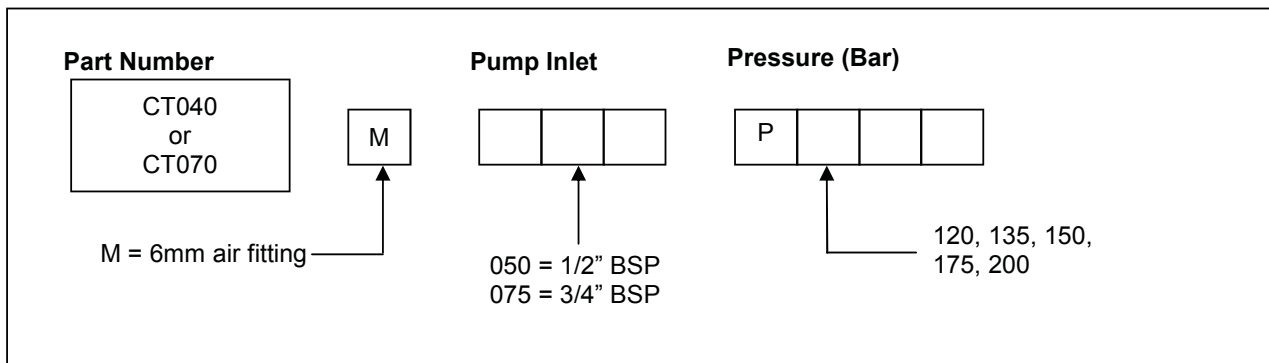
Hydraulic Control Valve for Tipper Applications - CT040/CT070



- Fully proportional—excellent lowering control when loaded
- No system filtration required
- Compact and lightweight
- Interchangeable with previous VT valve range
- Multiple mounting options
- Pressure switch point provided
- Single pressure relief cartridges available in a variety of pressure ratings



Hydraulic Valves



Mounting bolts and face O-rings supplied with each valve

All dimensions are given in mm unless otherwise stated. Technical Specifications are subject to change without notice.

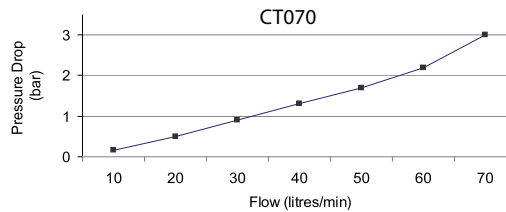
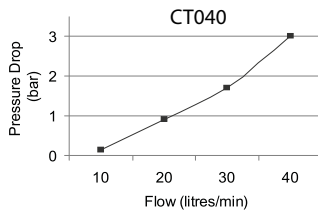
Hydraulic Control Valve for Tipper Applications - CT040/CT070

OPTIONS

Relief Valves	VC117 <input type="checkbox"/> <input type="checkbox"/> <input type="checkbox"/> H 120, 135, 150, 175, 200		
Independent Mounting Kit	Port A1 Pipe Connection	Port T Pipe Connection	Kit Part Number
	3/4" BSP	3/4" BSP	AK94
	1/2" BSP	1/2" BSP	AK95
Pressure Switch	1/8" BSP Body Raised Warning Kit (switch + washer + cover + light + buzzer + wiring)	SA2924 PM481 switch only E5454 cover only	
Port P Pump Inlet Elbow Adaptor	1/2" BSP 3/4" BSP	NR633 NR627	
Port A1 Outlet Adaptors for Tank Mounting	Pipe Connection	Straight	Elbow
	1/2" BSP	NR1700	NR633
	3/4" BSP	NR1675	NR627

PERFORMANCE

	CT070	CT040
Max. flow from pump	90l/min	90l/min
Rated return flow to tank (see graphs)	70 l/min	40 l/min
Maximum relief valve pressure	200 bar	200 bar
Maximum peak pressure	200 bar	200 bar
Minimum air pressure	6 bar	6 bar
Mass (including relief valve)	4.2kg	4.2kg

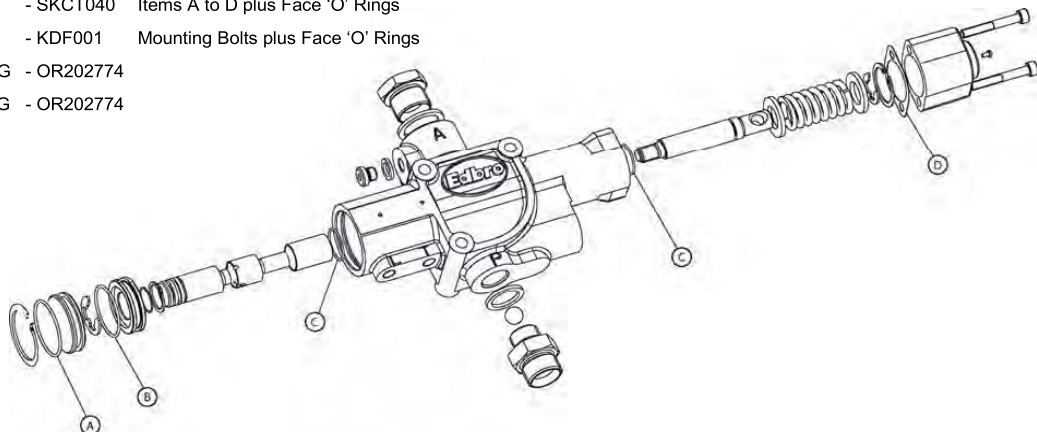


OIL & FILTRATION

- This valve is designed for tipper systems without filtration.
- The oil should be a good quality hydraulic oil to ISO 6743/4 HM2 for -15°C to +27°C working temperature.
- For extended life or for higher duty applications, 25µm absolute return line filtration is recommended.
- Oil Cleanliness to be maintained to ISO 4406 class 19/16.
- Oil should be replaced annually.

SPARES

- 1 SEAL KIT - SKCT040 Items A to D plus Face 'O' Rings
- 2 MOUNTING KIT - KDF001 Mounting Bolts plus Face 'O' Rings
- 3 PORT 'A' O RING - OR202774
- 4 PORT 'T' O RING - OR202774



All dimensions are given in mm unless otherwise stated. Technical Specifications are subject to change without notice.