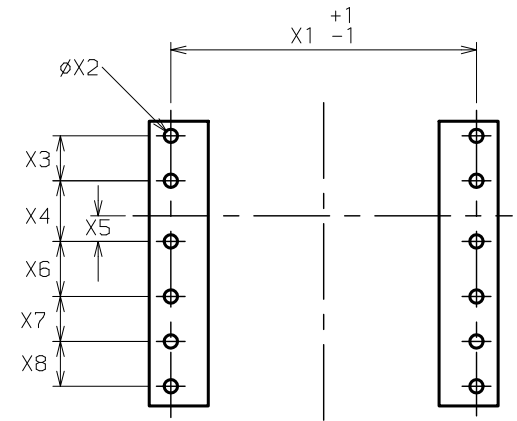
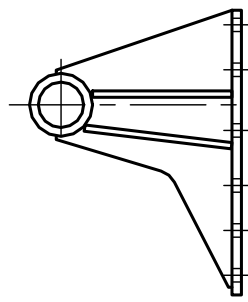


BOLT HOLE PATTERN



ISO B53643 DIN 931 Gr8,8
 M16 240Nm \curvearrowright \odot $\phi 17 \times \phi 30$

A	1559
B	451
C	179
D	311
E	42
F	238
G	229
H	120
J	241
K	1.25" BSP
L	268
M	300
N	810
P	837
R	94
S	349
T	56
V	50.8
W	57.15
Y	445
Z	318

AA	443
BB	293
CC	242
DD	92
EE	93
FF	136
GG	152
HH	89
JJ	70
KK	1084
LL	293
MM	62
X1	388
X2	17
X3	57
X4	77
X5	32
X6	70
X7	57
X8	57

EXT	BORE	Ø.DIA	LENGTH	STROKE	THRUST AT 135 bar
0/C		238.50	1116		
0		176.00	1420		
1		154.85	1440	1230	25.9 t
2		135.75	1440	1247	19.9 t
3		116.65	1440	1262	14.7 t
4		97.80	1440	1267	10.3 t
TOTAL				5006	

		BODY LENGTH								
		5500	5750	6000	6250	6500	6750	7000	0/HANG	
		32 54°	32 51°	32 49°	31 47°	30 45°			150	
		32 55°	32 53°	32 50°	32 48°	31 46°	31 44°		300	
			32 54°	32 52°	32 49°	32 47°	31 45°	31 44°	450	
				32 53°	32 51°	32 49°	32 47°	32 45°	600	
				32 55°	32 52°	32 50°	32 48°	32 46°	750	
		W α			32 54°	32 51°	32 49°	32 47°	900	

W = BODY WEIGHT + PAYLOAD (t) α = ANGLE OF TIP (°)

SWEPT VOLUME	64 l
TOTAL VOLUME	73 l
OIL TANK CAPACITY	90 l
OPERATING PRESSURE	135 bar
MAXIMUM PRESSURE	150 bar
CYLINDER WEIGHT DRY	346 kg

DIMENSIONS IN MILLIMETRES UNLESS STATED OTHERWISE

DATE 30. NOV. 06



THE INDUSTRY STANDARD

MAX LOAD 30-32 tonne

CYLINDER ASSEMBLY CV1500405006A101