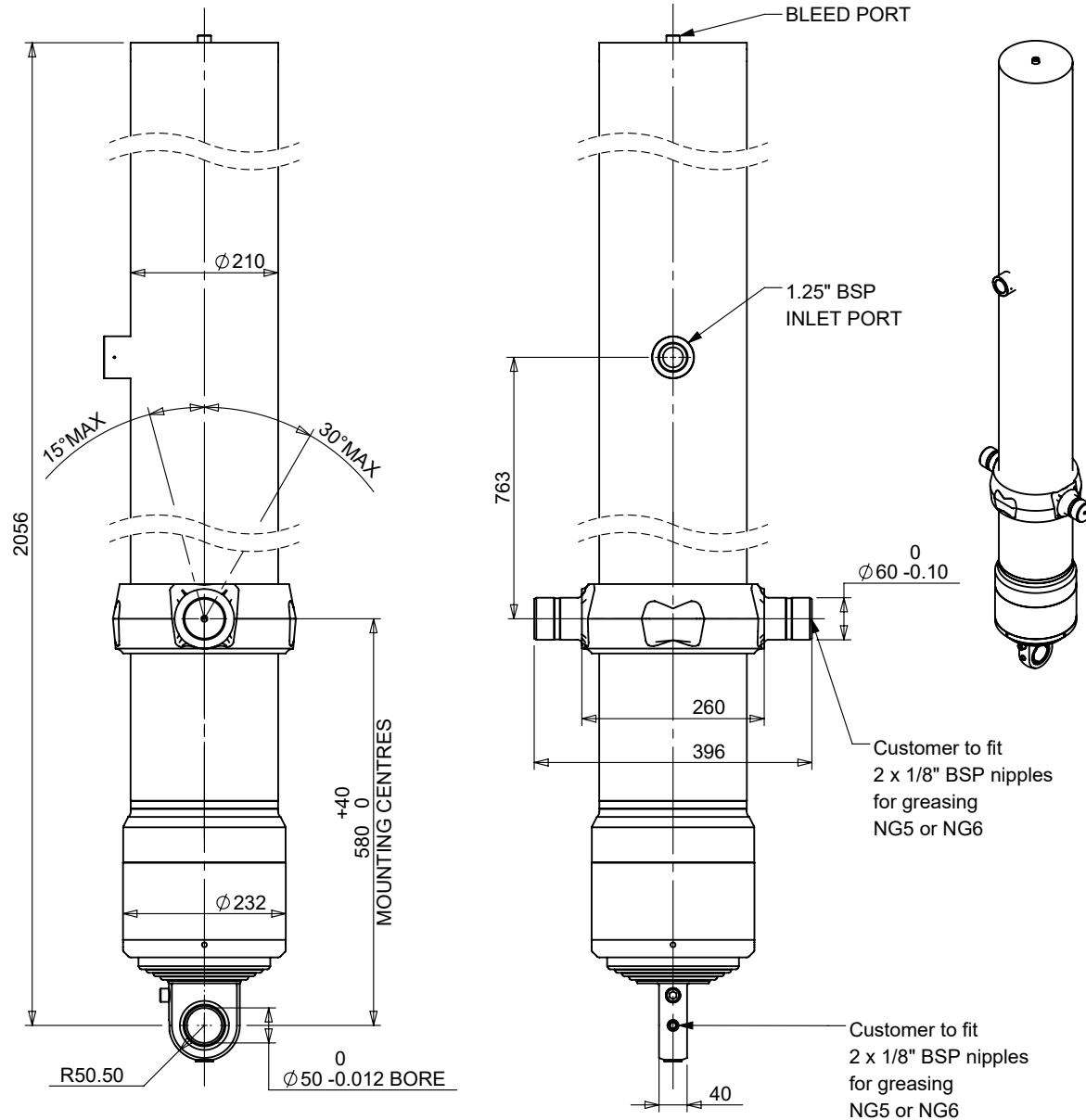


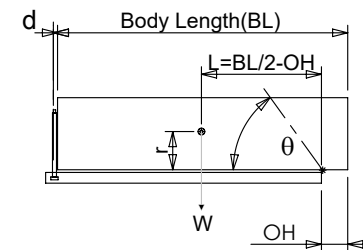
Cylinder 5 stage front end with plain eye

CV180S508633A525



SPECIFICATION		TIPPING CAPACITY :23 - 28 TONS***		
Stage	Diameter	Length	Stroke	Swept Volume
0	210	1918	-	-
1	188	1940	1718	48
2	167	1940	1737	38
3	147	1940	1747	30
4	127	1940	1762	22
5	105	1940	1667	14
Total (+5/-10)			8631	152
Final stroke reduced by	100	Priming Volume		29.1
Cylinder Mass (kg)	329	Total Volume (Litres)		181.1
Maximum Pressure (Bar)	150	Max. first stage thrust		265 kN

***TIPPING CAPACITY AT WORKING PRESSURE



BODY LENGTH (BL)												
10500				11000				11500				OH
24	50°	23	48°	23	45°	150						
26	52°	25	49°	24	47°	450						
28	54°	27	51°	25	48°	750						

d = 0; r = 900; Working Pressure 96 bar

For guidance only;

Higher working pressures and tipping capacities may be possible.
To check your application email - applications-uk@jost-world.com

NOTES

1. This cylinder is for lifting purposes only and side load conditions should be avoided
2. Cylinder is painted in primer paint to RAL5013
3. Refer to www.edbro.com for;-
 - Bracket details
 - Installation instructions that must be observed
 - Correct oil selection
 - An explanation of tipping capacity

*Includes 10mm Pull Out. All Stages Chrome Plated



JOST UK Ltd
Edbro House, Nelson Street, Bolton, Lancashire BL3 2JJ UK
Tel +44 (0) 1204 528888 Fax +44 (0) 1204 531957
Email: sales-uk@jost-world.com Web: www.edbro.com

Technical Specifications are subject to change without notice

Date Created/Updated: 01 April 2020

Scale: 1:50 Refer www.edbro.com to confirm latest specification

All dimensions are in 'mm', unless stated otherwise