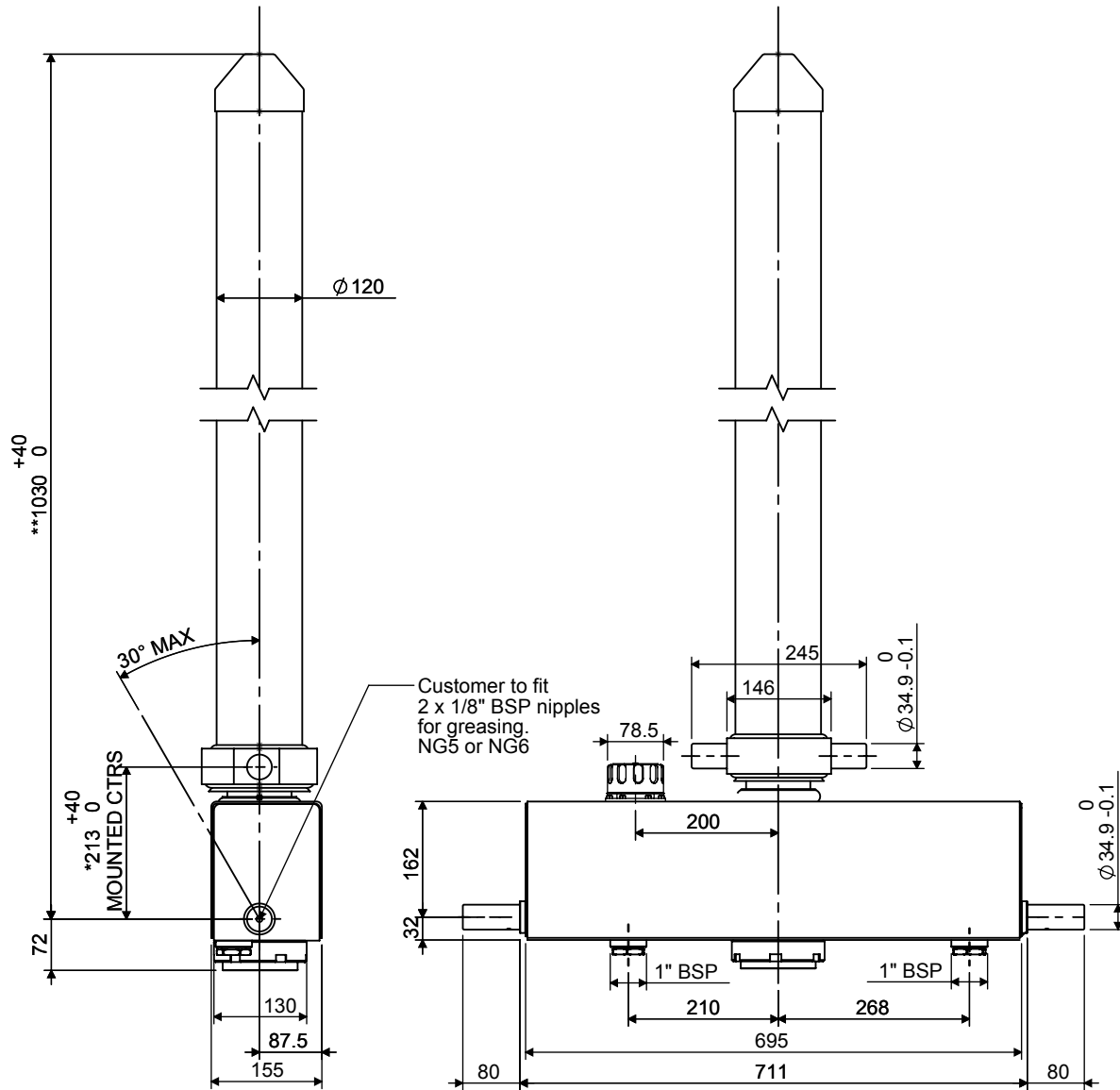


Cylinder 3 stage front end with integral oil tank

****ALLOW 50mm TO REMOVE CAP FOR SERVICING**

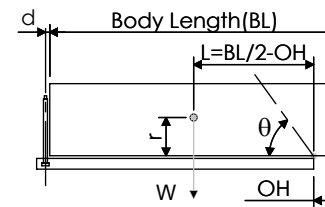


***Includes 10mm Pull Out.**

CX0700302130C101

SPECIFICATION		TIPPING CAPACITY : 7-10 TONNES***		
Stage	Diameter	Length	Stroke	Swept Volume
-	-	-	-	-
-	-	-	-	-
OUTER COVER	120	804	-	-
0	90	933	-	-
1	75	882	707	3
2	60	883	708	2
3	45	905	715	1
		Total (+5/-10)	2130	6
Final stroke reduced by	0	Priming Volume		1
Cylinder Mass (Kg)	69	Total Volume (Litres)		7
Maximum Pressure (Bar)	175	Max. first stage thrust		40 KN

***TIPPING CAPACITY AT WORKING PRESSURE



BODY LENGTH (BL)				OH
3000	3100	3200		
8	42°	7	41°	150
10	47°	10	45°	450
		9	44°	750

$d = 111$; $r = 500$; Working Pressure 150 bar

Tipping angle (θ)

Body + payload mass, W (tonne)

For guidance only;

Higher working pressures and tipping capacities may be possible.

To check your application email - applications@edbro.co.uk

NOTES

1. This cylinder is for lifting purposes only and side load conditions should be avoided
2. Cylinder is painted in primer paint to RAL5013
3. Refer to www.edbro.com for:-
 - Bracket details
 - Installation instructions that must be observed
 - Correct oil selection
 - An explanation of tipping capacity