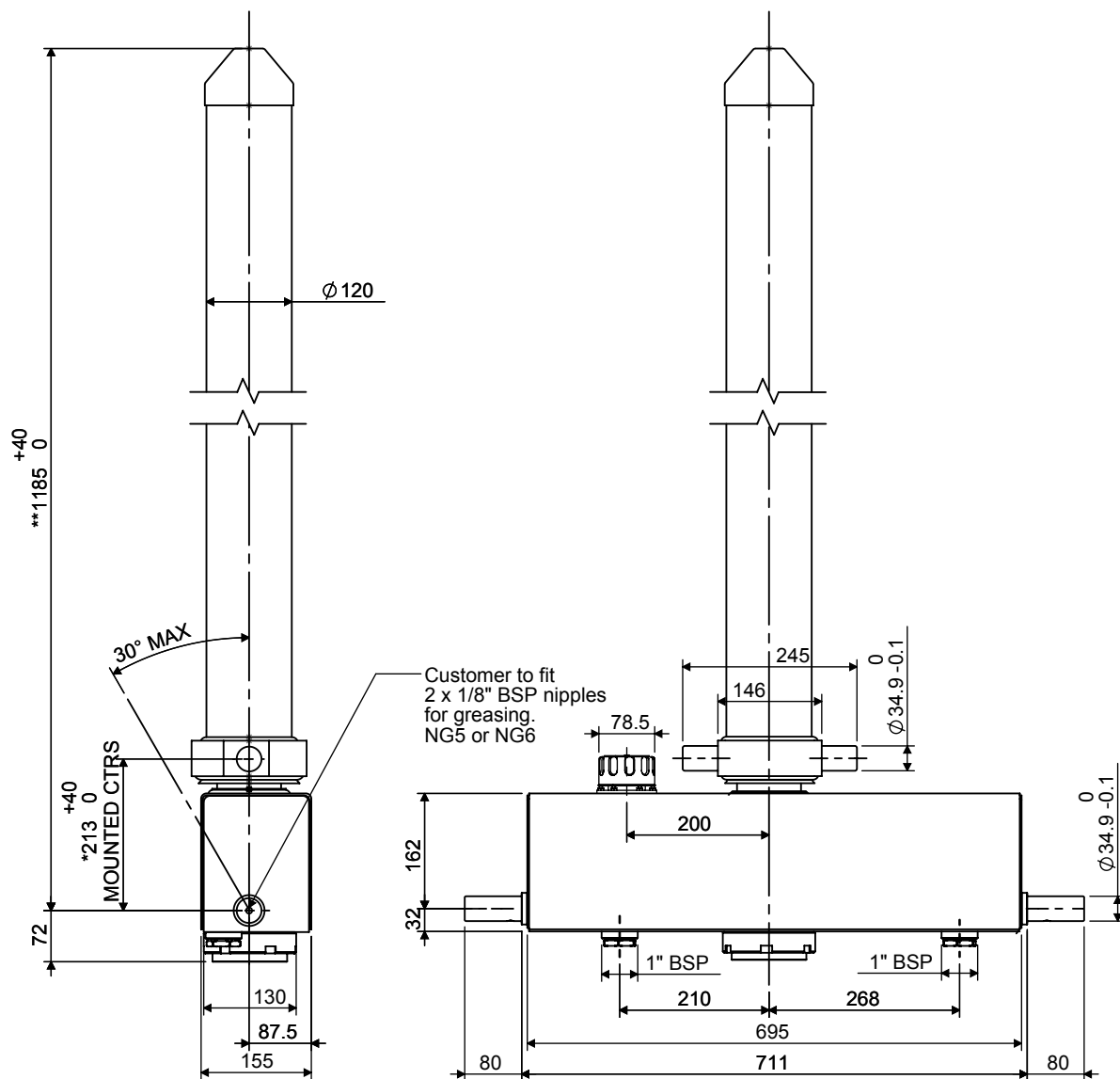


# Cylinder 3 stage front end with integral oil tank

**\*\*ALLOW 50mm TO REMOVE CAP FOR SERVICING**

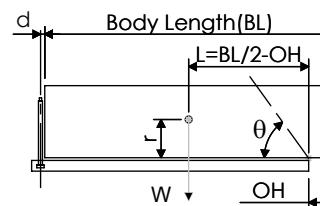


**\*Includes 10mm Pull Out.**

## CX0700302595C101

SPECIFICATION		TIPPING CAPACITY : 7-10 TONNES***		
Stage	Diameter	Length	Stroke	Swept Volume
-	-	-	-	-
-	-	-	-	-
OUTER COVER	120	959	-	-
0	90	1088	-	-
1	75	1037	862	4
2	60	1038	863	2
3	45	1060	870	1
Total (+5/-10)			2595	7
Final stroke reduced by	0	Priming Volume		2
Cylinder Mass (Kg)	76	Total Volume (Litres)		9
Maximum Pressure (Bar)	175	Max. first stage thrust		40 KN

### \*\*\*TIPPING CAPACITY AT WORKING PRESSURE



BODY LENGTH (BL)				OH
3500	3700	3900		
7	44°	7	42°	150
9	48°	8	45°	450
		10	47°	750

d = 111; r = 500; Working Pressure 150 bar

Tipping angle ( $\theta$ )

Body + payload mass, W (tonne)

### For guidance only;

Higher working pressures and tipping capacities may be possible.  
To check your application email - [applications@edbro.co.uk](mailto:applications@edbro.co.uk)

### NOTES

- This cylinder is for lifting purposes only and side load conditions should be avoided
- Cylinder is painted in primer paint to RAL5013
- Refer to [www.edbro.com](http://www.edbro.com) for:-
  - Bracket details
  - Installation instructions that must be observed
  - Correct oil selection
  - An explanation of tipping capacity