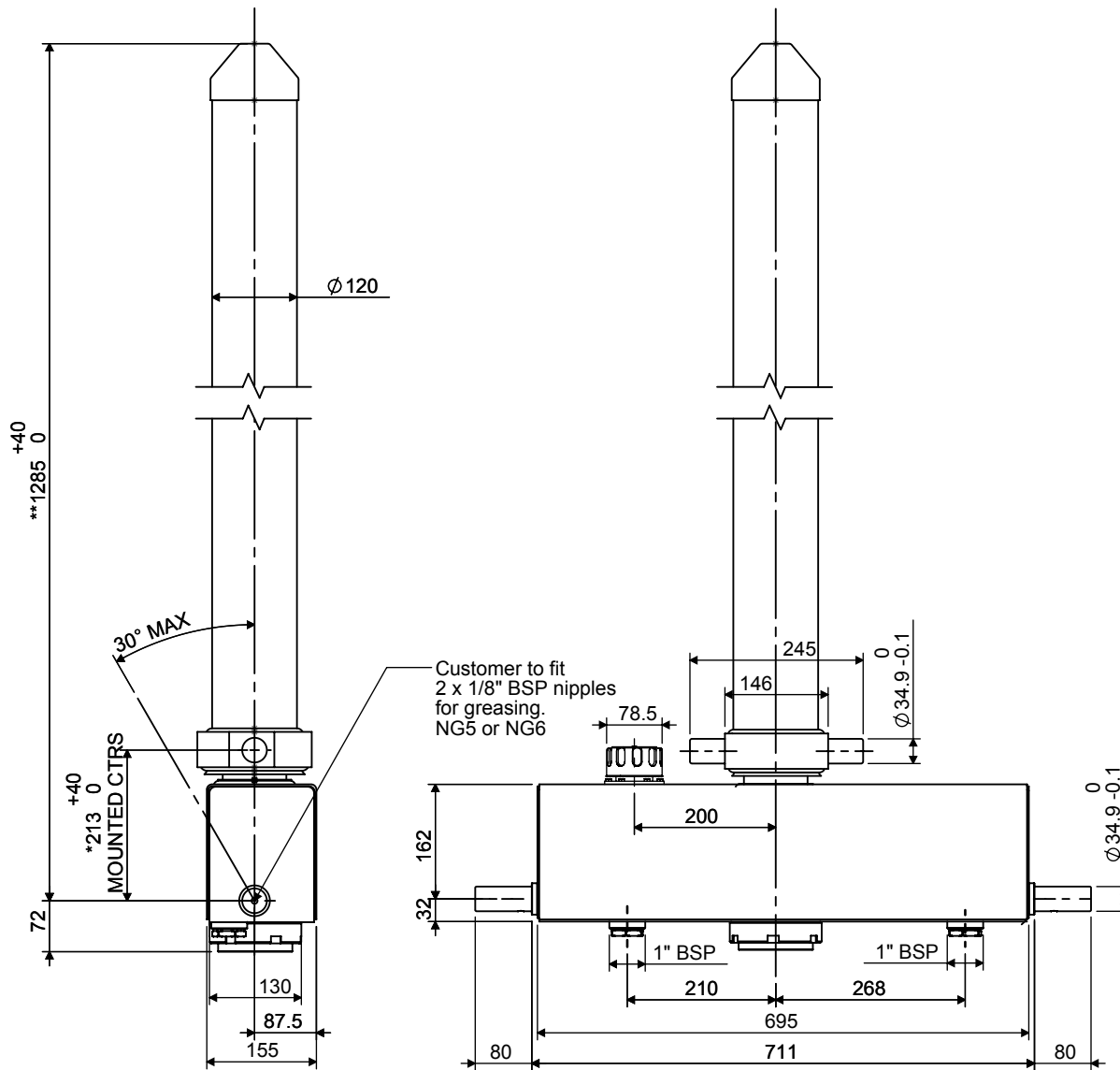


Cylinder 3 stage front end with integral oil tank

****ALLOW 50mm TO REMOVE CAP FOR SERVICING**

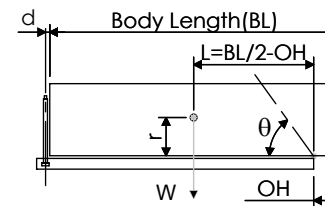


***Includes 10mm Pull Out.**

CX0700302895C101

SPECIFICATION		TIPPING CAPACITY : 7-11 TONNES***		
Stage	Diameter	Length	Stroke	Swept Volume
-	-	-	-	-
-	-	-	-	-
OUTER COVER	120	1059	-	-
0	90	1188	-	-
1	75	1137	962	4
2	60	1138	963	3
3	45	1160	970	2
Total (+5/-10)			2895	9
Final stroke reduced by	0	Priming Volume		2
Cylinder Mass (Kg)	80	Total Volume (Litres)		11
Maximum Pressure (Bar)	175	Max. first stage thrust		40 KN

***TIPPING CAPACITY AT WORKING PRESSURE



BODY LENGTH (BL)						OH
3750		4000		4250		
7	46°	7	43°			150
9	50°	8	47°	8	43°	450
		11	51°	10	47°	750

$d = 111; r = 500; \text{Working Pressure } 150 \text{ bar}$

For guidance only;

Higher working pressures and tipping capacities may be possible.

To check your application email - applications@edbro.co.uk

NOTES

1. This cylinder is for lifting purposes only and side load conditions should be avoided
2. Cylinder is painted in primer paint to RAL5013
3. Refer to www.edbro.com for:-
 - Bracket details
 - Installation instructions that must be observed
 - Correct oil selection
 - An explanation of tipping capacity