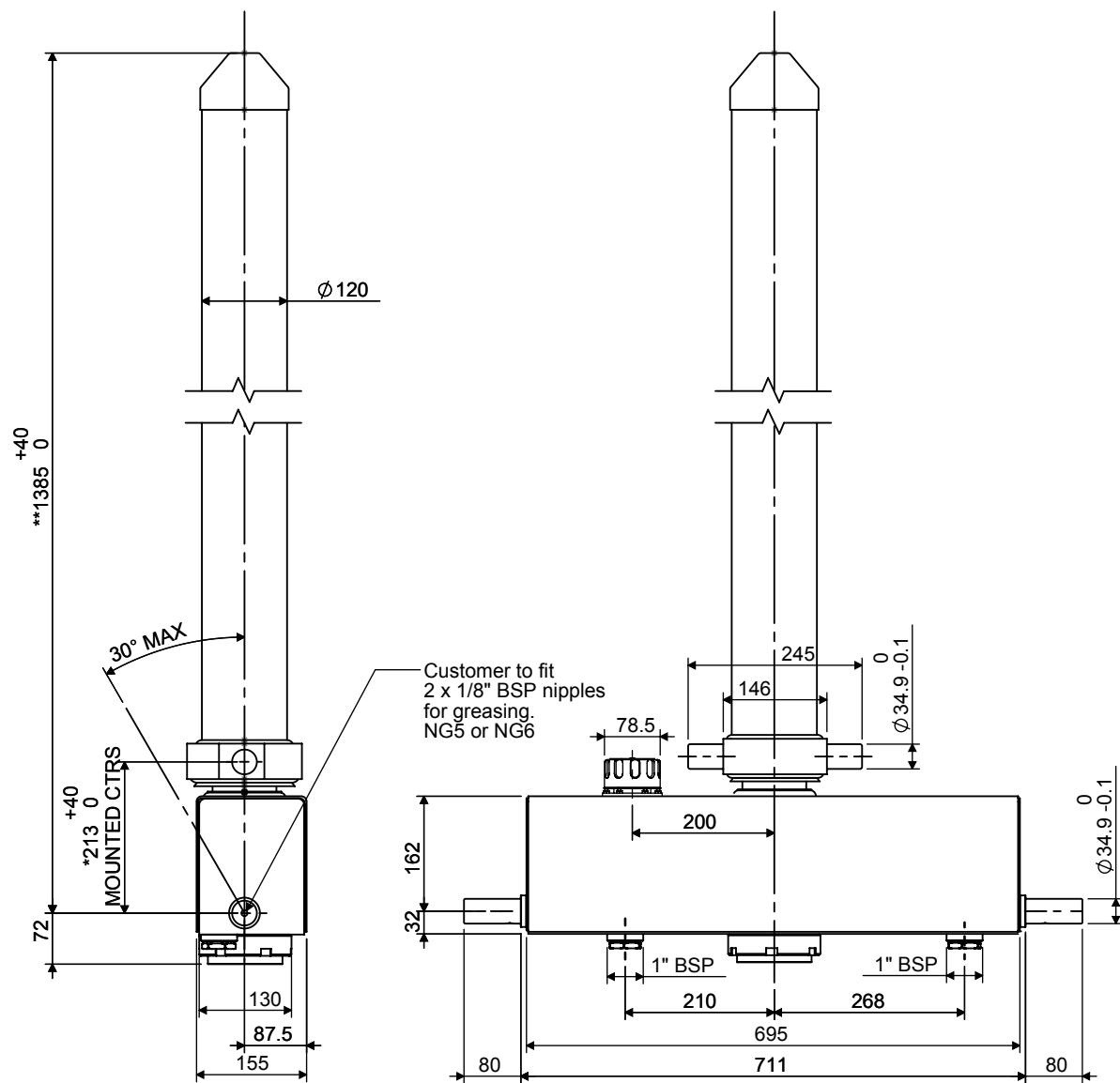


Cylinder 3 stage front end with integral oil tank

****ALLOW 50mm TO REMOVE CAP FOR SERVICING**

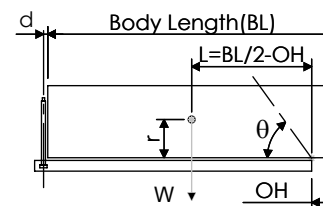


***Includes 10mm Pull Out.**

CX0700303195C101

SPECIFICATION		TIPPING CAPACITY : 7-10 TONNES***		
Stage	Diameter	Length	Stroke	Swept Volume
-	-	-	-	-
-	-	-	-	-
OUTER COVER	120	1159	-	-
0	90	1288	-	-
1	75	1237	1062	5
2	60	1238	1063	3
3	45	1260	1070	2
Total (+5/-10)			3195	10
Final stroke reduced by	0	Priming Volume		2
Cylinder Mass (Kg)	84	Total Volume (Litres)		12
Maximum Pressure (Bar)	175	Max. first stage thrust		40 KN

***TIPPING CAPACITY AT WORKING PRESSURE



		BODY LENGTH (BL)				OH
		4250	4500	4750		
7	45°	7	42°		150	
8	48°	8	45°	7	43°	450
10	53°	9	49°	9	46°	750

$d = 111; r = 500; \text{Working Pressure } 150 \text{ bar}$

Tipping angle (θ)
Body + payload mass, W (tonne)

For guidance only;

Higher working pressures and tipping capacities may be possible.
To check your application email - applications@edbro.co.uk

NOTES

1. This cylinder is for lifting purposes only and side load conditions should be avoided
2. Cylinder is painted in primer paint to RAL5013
3. Refer to www.edbro.com for:-
 - Bracket details
 - Installation instructions that must be observed
 - Correct oil selection
 - An explanation of tipping capacity