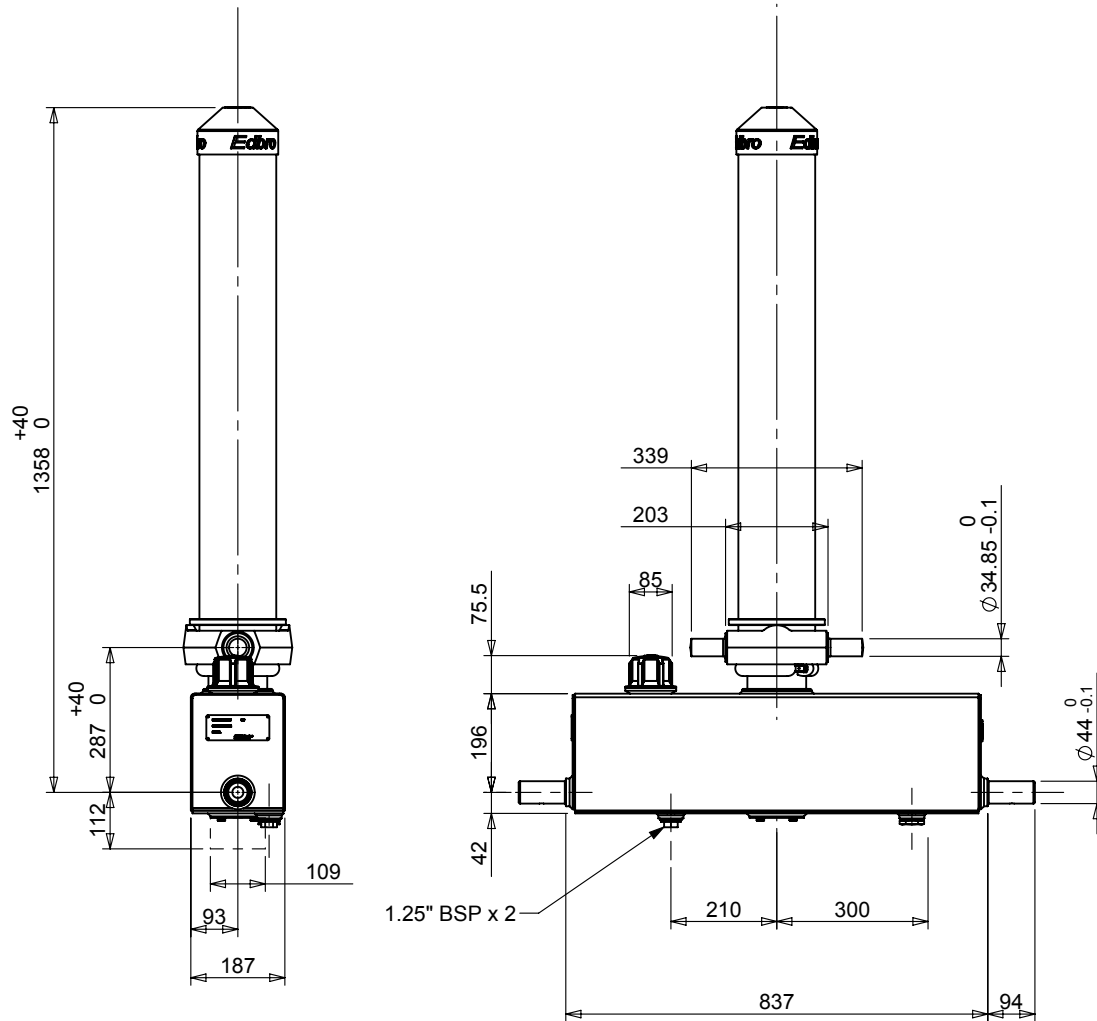


# Cylinder 3 stage front end with outer cover

**\*\*ALLOW 50mm TO REMOVE CAP FOR SERVICING**

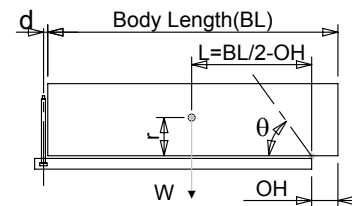


**\*Includes 10mm Pull Out.  
All Stages Chrome Plated**

## CX1000303209A102

SPECIFICATION		TIPPING CAPACITY : 13-14 TONNES***		
Stage	Diameter	Length	Stroke	Swept Volume
OUTER COVER	152	1020	-	-
0	117	1220	-	-
1	98	1240	1060	8
2	79	1240	1072	5
4	63	1240	1077	3
Total (+5/-10)			3209	16
Final stroke reduced by	0	Priming Volume		4
Cylinder Mass (Kg)	122	Total Volume (Litres)		20
Maximum Pressure (Bar)	175	Oil Tank Capacity (L)		25

### \*\*\*TIPPING CAPACITY AT WORKING PRESSURE



BODY LENGTH (BL)						OH
4000		4250		4500		
14	50°	13	47°	13	44°	150
14	55°	14	51°	14	48°	450
				14	52°	750

d = 0; r = 900; Working Pressure 150 bar

#### For guidance only;

Higher working pressures and tipping capacities may be possible.  
To check your application email - [applications@edbro.co.uk](mailto:applications@edbro.co.uk)

#### NOTES

1. This cylinder is for lifting purposes only and side load conditions should be avoided
2. Cylinder is painted in primer paint to RAL5013
3. Refer to [www.edbro.com](http://www.edbro.com) for:-
  - Bracket details
  - Installation instructions that must be observed
  - Correct oil selection
  - An explanation of tipping capacity



**JOST UK Ltd**  
Edbro House, Nelson Street, Bolton, England, BL3 2JJ  
Tel +44 (0) 1204 528888 Fax +44 (0) 1204 531957  
Email: [sales-uk@jost-world.com](mailto:sales-uk@jost-world.com) Web: [www.edbro.com](http://www.edbro.com)

Technical Specifications are subject to change without notice  
Date Created/Updated: 07 October 2020  
Refer [www.edbro.com](http://www.edbro.com) to confirm latest specification  
All dimensions are in 'mm', unless otherwise stated