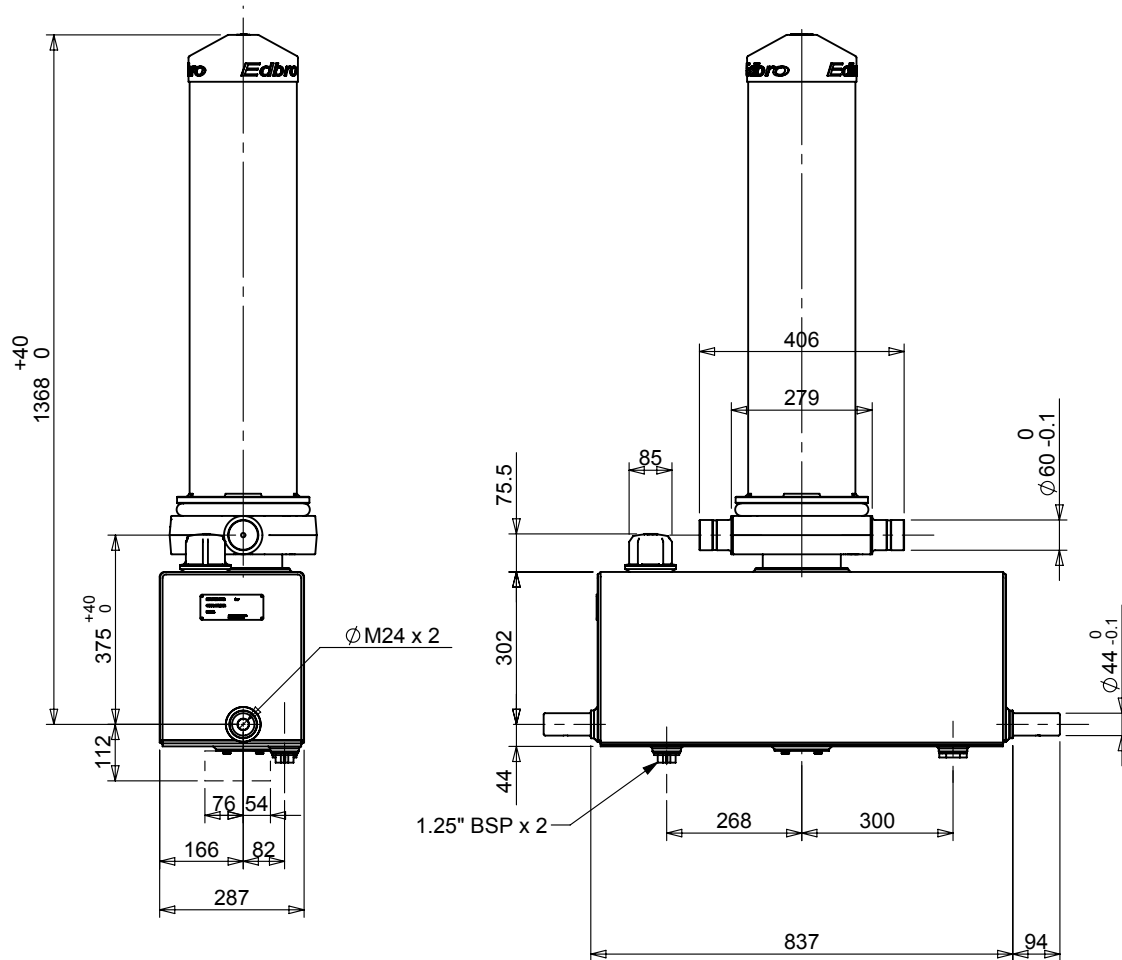


Cylinder 4 stage front end with outer cover

****ALLOW 50mm TO REMOVE CAP FOR SERVICING**

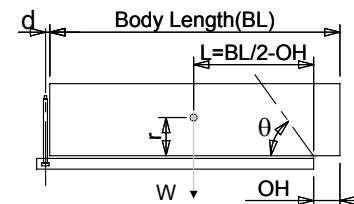


***Includes 9mm Pull Out.**

CX1300404241B102

SPECIFICATION		TIPPING CAPACITY : 24-41 TONNES***		
Stage	Diameter	Length	Stroke	Swept Volume
OUTER COVER	213	950	-	-
0	155	1220	-	-
1	136	1240	1044	15
2	117	1240	1062	11
3	98	1240	1067	8
4	79	1240	1072	5
Total (+5/-10)			4245	39
Final stroke reduced by	0	Priming Volume		10.7
Cylinder Mass (Kg)	235	Total Volume (Litres)		49.7
Maximum Pressure (Bar)	165	Oil Tank Capacity (L)		58

***TIPPING CAPACITY AT WORKING PRESSURE



BODY LENGTH (BL)						OH
5250		5500		5750		
26	47°	25	45°	24	43°	150
31	50°	29	48°	27	45°	450
41	54°	36	51°	33	48°	750

$d = 0$; $r = 900$; Working Pressure 150 bar

For guidance only;

Higher working pressures and tipping capacities may be possible.

To check your application email - applications@edbro.co.uk

NOTES

1. This cylinder is for lifting purposes only and side load conditions should be avoided
2. Cylinder is painted in primer paint to RAL5013
3. Refer to www.edbro.com for;-
 - Bracket details
 - Installation instructions that must be observed
 - Correct oil selection
 - An explanation of tipping capacity