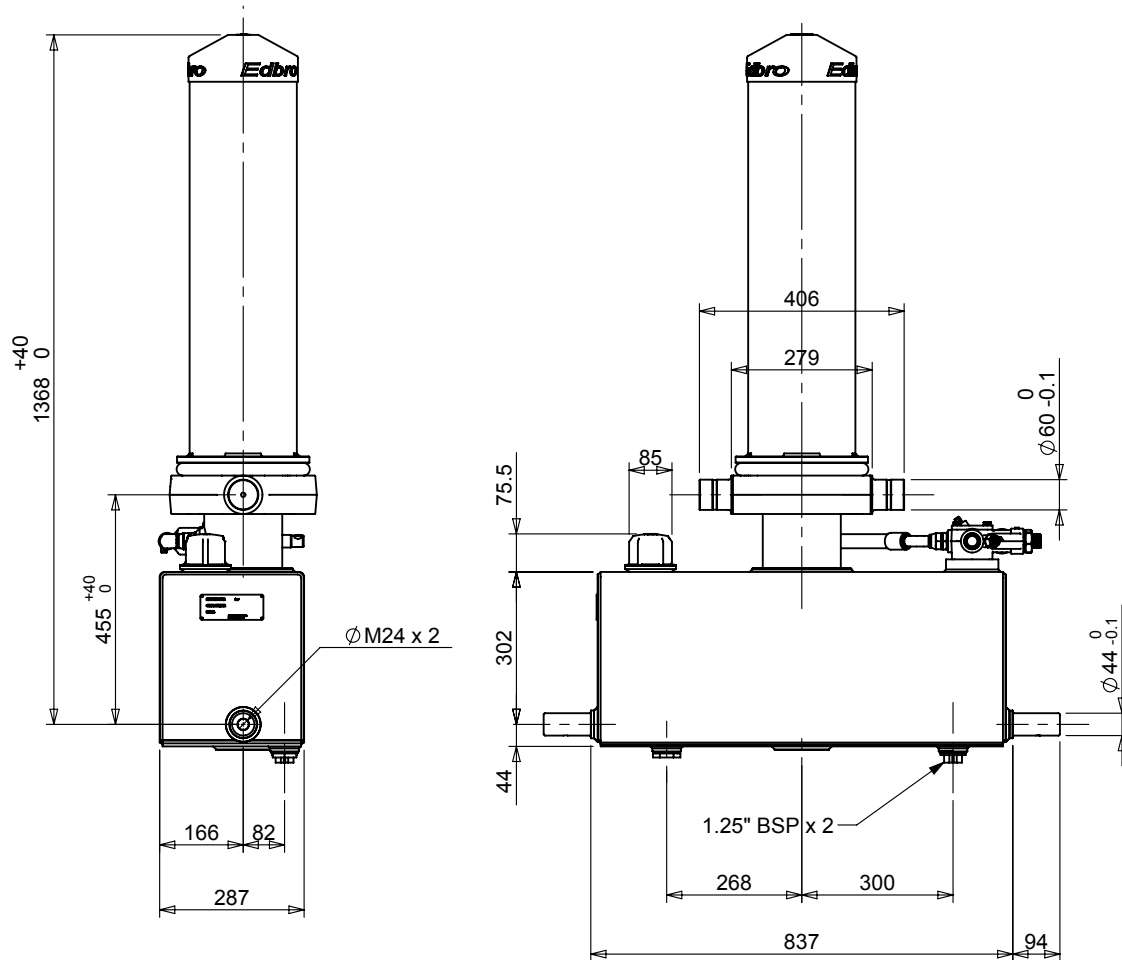


Cylinder 4 stage front end with outer cover

****ALLOW 50mm TO REMOVE CAP FOR SERVICING**

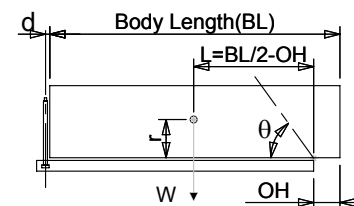


***Includes 9mm Pull Out.**

CX1300404241B367

| SPECIFICATION | | TIPPING CAPACITY : 22-36 TONNES*** | | |
|-------------------------|----------|------------------------------------|--------|--------------|
| Stage | Diameter | Length | Stroke | Swept Volume |
| OUTER COVER | 213 | 870 | - | - |
| 0 | 155 | 1220 | - | - |
| 1 | 136 | 1240 | 1044 | 15 |
| 2 | 117 | 1240 | 1062 | 11 |
| 3 | 98 | 1240 | 1067 | 8 |
| 4 | 79 | 1240 | 1072 | 5 |
| Total (+5/-10) | | | 4245 | 39 |
| Final stroke reduced by | 0 | Priming Volume | | 10.7 |
| Cylinder Mass (Kg) | 244 | Total Volume (Litres) | | 49.7 |
| Maximum Pressure (Bar) | 165 | Oil Tank Capacity (L) | | 58 |

***TIPPING CAPACITY AT WORKING PRESSURE



| BODY LENGTH (BL) | | | | | | OH |
|------------------|------|------|-----|----|-----|-----|
| 4750 | 5500 | 6250 | | | | |
| 27 | 53° | 22 | 45° | 20 | 39° | 150 |
| 36 | 57° | 26 | 48° | 22 | 41° | 450 |
| | | 32 | 51° | 25 | 44° | 750 |

$d = 0$; $r = 900$; Working Pressure 135 bar

For guidance only;

Higher working pressures and tipping capacities may be possible.
To check your application email - applications@edbro.co.uk

NOTES

1. This cylinder is for lifting purposes only and side load conditions should be avoided
2. Cylinder is painted in primer paint to RAL5013
3. Refer to www.edbro.com for;-
 - Bracket details
 - Installation instructions that must be observed
 - Correct oil selection
 - An explanation of tipping capacity