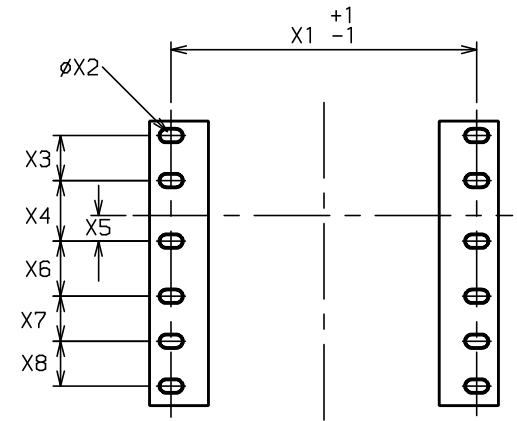
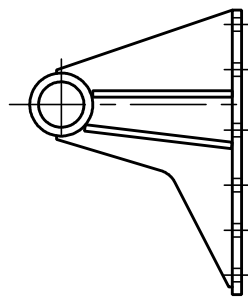


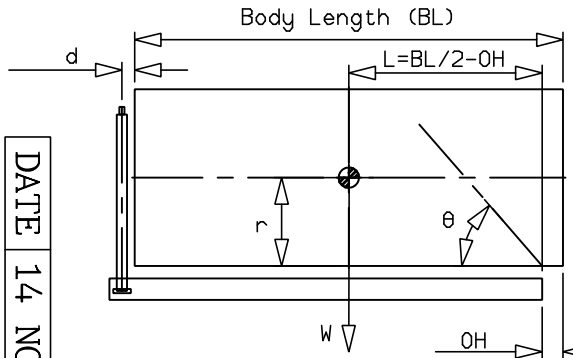
BOLT HOLE PATTERN



ISO BS3643 DIN 931 Gr8,8
 M16 240Nm \curvearrowright \odot $\phi 17 \times \phi 30$

A	1259	AA	443
B	451	BB	293
C	179		
D	311	DD	92
E	42	EE	93
F	238	FF	136
G	229	GG	152
H	120	HH	89
J	241	JJ	70
K	1.25" BSP		
L	268		
M	300	MM	62
N	810	X1	388
P	837	X2	17
R	94	X3	57
S	349	X4	77
T	56	X5	32
V	50.8	X6	70
W	60	X7	57
Y	445	X8	57
Z	318		

EXT	BORE	O.DIA	LENGTH	STROKE
0/C		238.50	816	
0		176.00	1070	
1		154.85	1140	930
2		135.75	1140	947
3		116.65	1140	962
4		97.80	1140	967
			TOTAL	3806



d=229; r=750;
 Working Pressure 150 bar

BODY LENGTH (BL)					OH	
5100	5350	5600				
36	43°	34	41°	33	39°	150
42	46°	39	44°	37	42°	450
52	50°	47	47°	44	44°	750
W	α					

W = BODY WEIGHT + PAYLOAD (tonne)
 α = TIPPING ANGLE(°)

SWEPT VOLUME	49 l
TOTAL VOLUME	61 l
OIL TANK CAPACITY	79.5 l
OPERATING PRESSURE	150 bar
MAXIMUM PRESSURE	165 bar
CYLINDER WEIGHT DRY	292 kg

DIMENSIONS IN MILLIMETRES UNLESS STATED OTHERWISE

DATE 14 NOV 13



THE INDUSTRY STANDARD

TIPPING CAPACITY 33-52 tonnes

CYLINDER ASSEMBLY CX1500403806B191