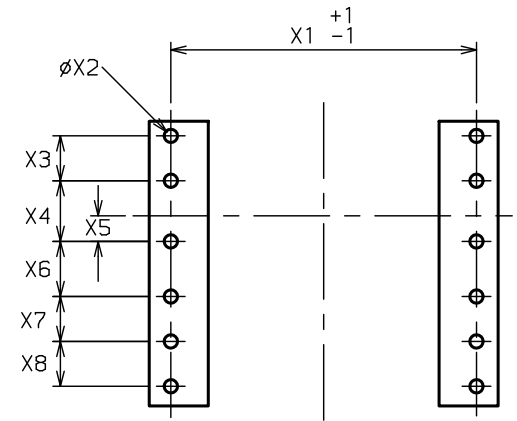
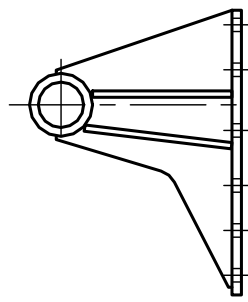


BOLT HOLE PATTERN



ISO B53643 DIN 931 Gr8,8
 M16 240Nm \curvearrowright \odot $\varnothing 17 \times \varnothing 30$

A	1459	AA	443
B	451	BB	293
C	179		
D	311	DD	92
E	42	EE	93
F	238	FF	136
G	229	GG	152
H	120	HH	89
J	241	JJ	70
K	1.25" BSP		
L	268		
M	300	MM	62
N	810	X1	388
P	837	X2	17
R	94	X3	57
S	349	X4	77
T	56	X5	32
V	50.8	X6	70
W	57.15	X7	57
Y	445	X8	57
Z	318		

EXT	BORE	O. DIA	LENGTH	STROKE	THRUST AT 135 bar
0/C		238.50	1016	XXXX	XXXX
0		176.00	1320	XXXX	XXXX
1		154.85	1340	1130	25.9 t
2		135.75	1340	1147	19.9 t
3		116.65	1340	1162	14.7 t
4		97.80	1340	1167	10.3 t
				TOTAL	4606

		BODY LENGTH							
		5000	5250	5500	5750	6000	6250	6500	0/HANG
		32 54°	32 51°	32 49°	32 47°	31 45°			150
			32 53°	32 50°	32 48°	32 46°	31 44°		300
			32 55°	32 52°	32 49°	32 47°	32 45°		450
				32 54°	32 51°	32 48°	32 46°	32 44°	600
				32 55°	32 53°	32 50°	32 48°	32 45°	750
W	α				32 54°	32 51°	32 49°	32 47°	900

DATE 14 JULY 98



W = BODY WEIGHT + PAYLOAD (t) α = ANGLE OF TIP (°)
 THE INDUSTRY STANDARD

MAX LOAD 32 tonne

DIMENSIONS IN MILLIMETRES UNLESS STATED OTHERWISE

CYLINDER ASSEMBLY CX1500404606A191

SWEPT VOLUME	59 l
TOTAL VOLUME	68 l
OIL TANK CAPACITY	90 l
OPERATING PRESSURE	135 bar
MAXIMUM PRESSURE	150 bar
CYLINDER WEIGHT DRY	315 kg