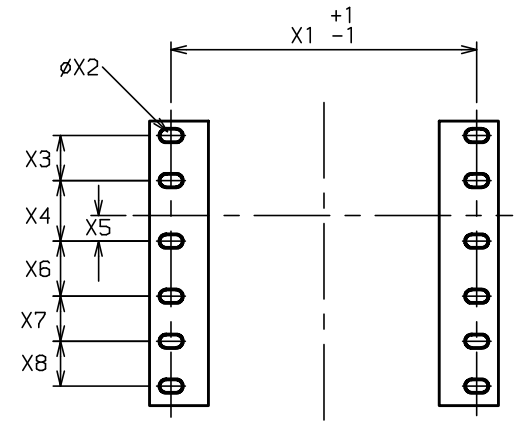
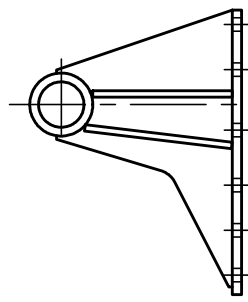


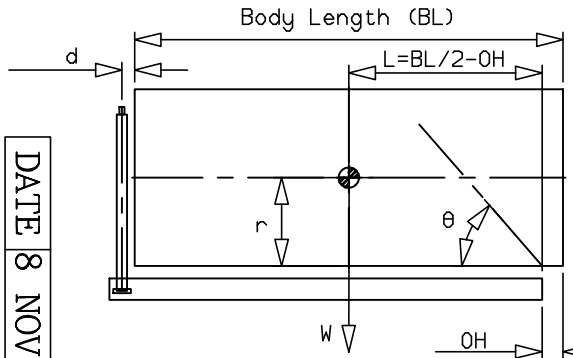
BOLT HOLE PATTERN



ISO BS3643 DIN 931 Gr8,8
 M16 240Nm \curvearrowright \odot $\phi 17 \times \phi 30$

A	1459	AA	443
B	451	BB	293
C	179		
D	311	DD	92
E	42	EE	93
F	238	FF	136
G	229	GG	152
H	120	HH	89
J	241	JJ	70
K	1.25" BSP		
L	268		
M	300	MM	62
N	810	X1	388
P	837	X2	17
R	94	X3	57
S	349	X4	77
T	56	X5	32
V	50.8	X6	70
W	60	X7	57
Y	445	X8	57
Z	318		

EXT	BORE	O.DIA	LENGTH	STROKE
0/C		238.50	1066	
0		176.00	1320	
1		154.85	1390	1180
2		135.75	1390	1197
3		116.65	1390	1212
4		97.80	1390	1217
			TOTAL	4806



d=229; r=750;
 Working Pressure 150 bar

BODY LENGTH (BL)				OH		
5850	6100	6350				
36	48°	35	46°	34	44°	150
42	51°	40	49°	38	46°	450
50	54°	46	51°	43	49°	750
W	α					

W = BODY WEIGHT + PAYLOAD (tonne)
 α = TIPPING ANGLE(°)

SWEPT VOLUME	61 l
TOTAL VOLUME	77 l
OIL TANK CAPACITY	79.5 l
OPERATING PRESSURE	150 bar
MAXIMUM PRESSURE	165 bar
CYLINDER WEIGHT DRY	295 kg

DIMENSIONS IN MILLIMETRES UNLESS STATED OTHERWISE

DATE 8 NOV 2013



THE INDUSTRY STANDARD

TIPPING CAPACITY 34-50 tonnes

CYLINDER ASSEMBLY CX1500404806B191