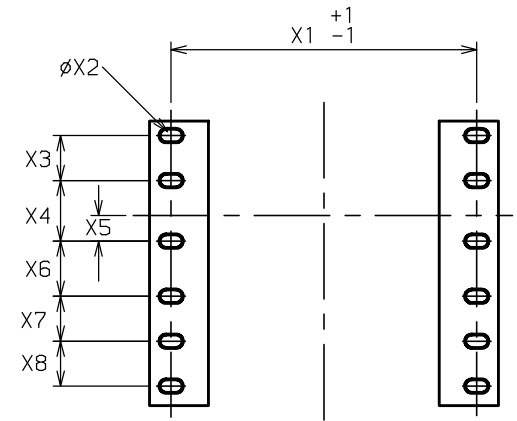
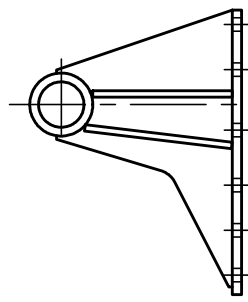


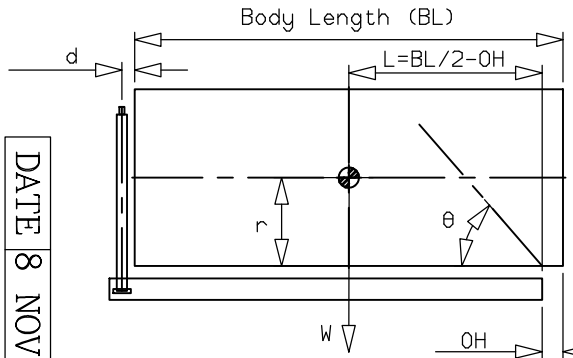
BOLT HOLE PATTERN



ISO B53643 DIN 931 Gr8,8
 M16 240Nm \curvearrowright \odot $\varnothing 17 \times \varnothing 30$

A	1709	AA	443
B	481	BB	293
C	179	CC	242
D	311	DD	92
E	42	EE	93
F	238	FF	136
G	229	GG	152
H	120	HH	89
J	241	JJ	70
K	1.25" BSP	KK	1084
L	268	LL	323
M	300	MM	62
N	810	X1	388
P	837	X2	17
R	94	X3	57
S	379	X4	77
T	56	X5	32
V	50.8	X6	70
W	60	X7	57
Y	442.5	X8	57
Z	318		

EXT	BORE	O.DIA	LENGTH	STROKE
0/C		238.50	1195	
0		176.00	1570	
1		154.85	1590	1380
2		135.75	1590	1397
3		116.65	1590	1412
4		97.80	1590	1417
TOTAL				5606



BODY LENGTH (BL)						OH
6750		7250		7750		
35	49°	33	45°	31	42°	150
39	51°	36	46°	34	44°	450
45	54°	40	47°	37	46°	750
W						alpha

W = BODY WEIGHT + PAYLOAD (tonne)
 alpha = TIPPING ANGLE(°)

SWEPT VOLUME	72 l
TOTAL VOLUME	91 l
OIL TANK CAPACITY	90 l
OPERATING PRESSURE	150 bar
MAXIMUM PRESSURE	165 bar
CYLINDER WEIGHT DRY	368 kg

DIMENSIONS IN MILLIMETRES UNLESS STATED OTHERWISE

DATE 8 NOV 2013



THE INDUSTRY STANDARD

TIPPING CAPACITY 31-45 tonnes

CYLINDER ASSEMBLY CX1500405606B275