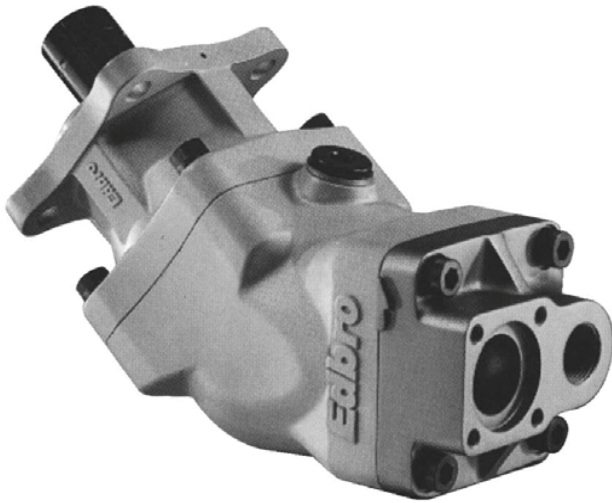
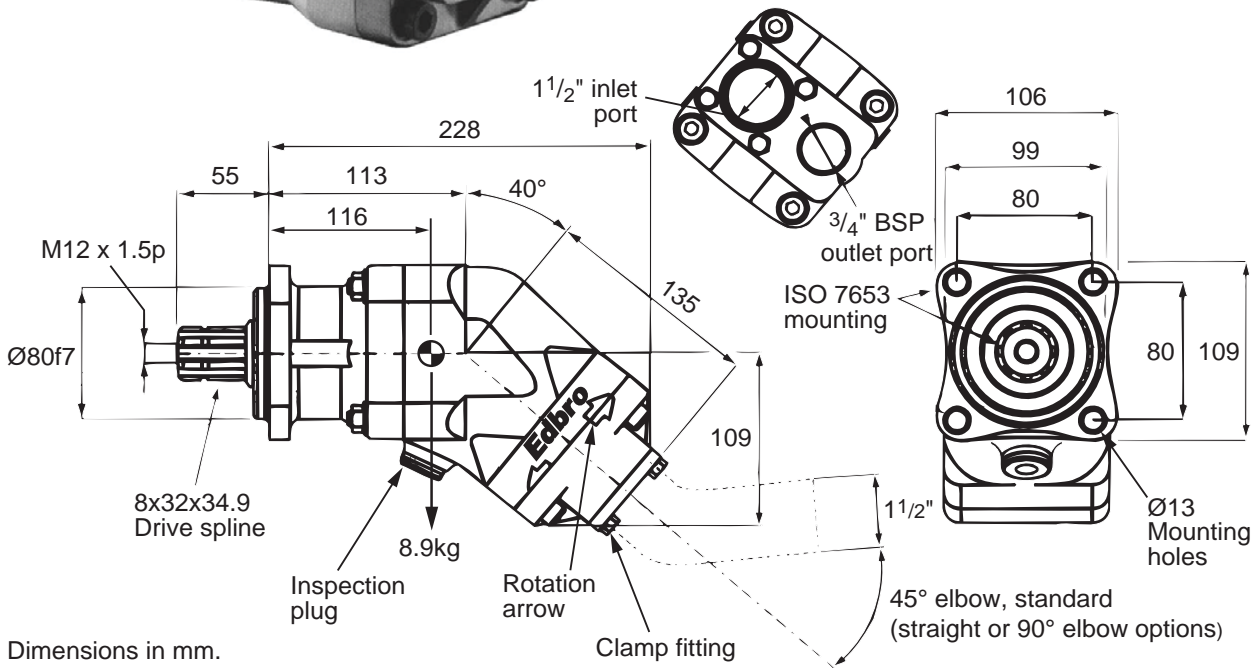


Bent Axis Piston Pump: Tipper Applications - EBA06422



- 64 cm³/rev output flow
- Medium pressure (250 bar mwp)
- Compact size for easy installation
- Ideal for close coupled PTO mounting
- Lightweight aluminium casings
- Reversible rotation whilst installed
- 4 - Hole ISO7653 Mounting flange



Dimensions in mm.

PIPE ADAPTOR KIT OPTIONS

Low pressure inlet adaptors	High pressure outlet adaptor options	
	3/4 inch BSP straight (NR611/42, DPP45F)	3/4 inch BSP 90° elbow (NR611/42, NR627, DPP45F)
1 1/2 inch push-on 45° elbow (NR1588)	AK53 (standard)	AK66
1 1/2 inch push-on 90° elbow (NR1589)	AK54	AK67
1 1/2 inch push-on straight (NR1612)	AK52	AK65

All dimensions are given in mm unless otherwise stated. Technical Specifications are subject to change without notice.

Bent Axis Piston Pump: Tipper Applications - EBA06422

PERFORMANCE

Displacement	cm ³ /rev	64
Max. Working Pressure	bar	250
Max. Working Speed	rpm	1900
Max.Speed Off-Load	rpm	2500
Power	Kw	55
Weight	kg	9.0
Moment at PTO face	Nm	10.1

OIL & FILTRATION

This pump is designed for low pressure, intermittent use, tipper systems without filtration. The oil should be a good quality hydraulic oil

to ISO 6743/4 HM32 for -15° to +27°C working temperature.

For extended life or for higher duty applications, 25mm absolute return line filtration is recommended.

Oil cleanliness to be maintained to ISO 4406 class 19/16.

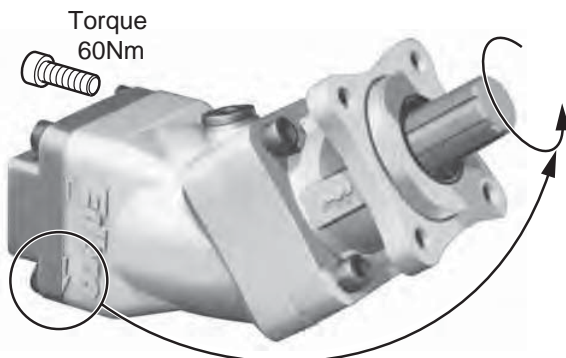
Oil should be replaced annually.

PIPES

Size: Suction 1 1/2 inch minimum
Pressure 3/4 inch minimum

The suction pipe must be able to withstand -12psi (-0.8bar) pressure.

Pipe runs should be direct and short, with no kinks.



ROTATION DIRECTION

The rotation direction is shown by the complete arrows on the pump casing, and is specified as clockwise (right hand rotation) or anti-clockwise (left hand rotation), when viewed looking toward the pump along the splined shaft.

To change the rotation direction, remove the 4 setscrews and lift the end cover by a few mm.

Rotate through 180° push back into place and replace the setscrews.

Unless specially requested, ANTI-CLOCKWISE configuration will be supplied.