

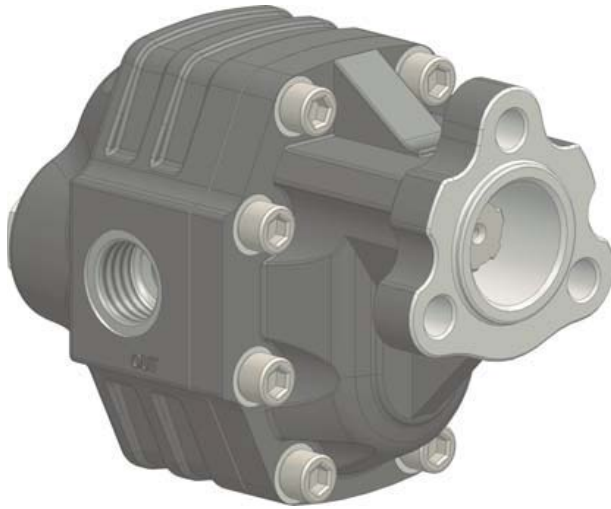


Edbro have a wealth of experience in the field of pumps and our engineering team are on hand to help you select the right pump for your application.

The current product range present operators with a wide selection of choices with solutions available for most on vehicle hydraulic requirements.

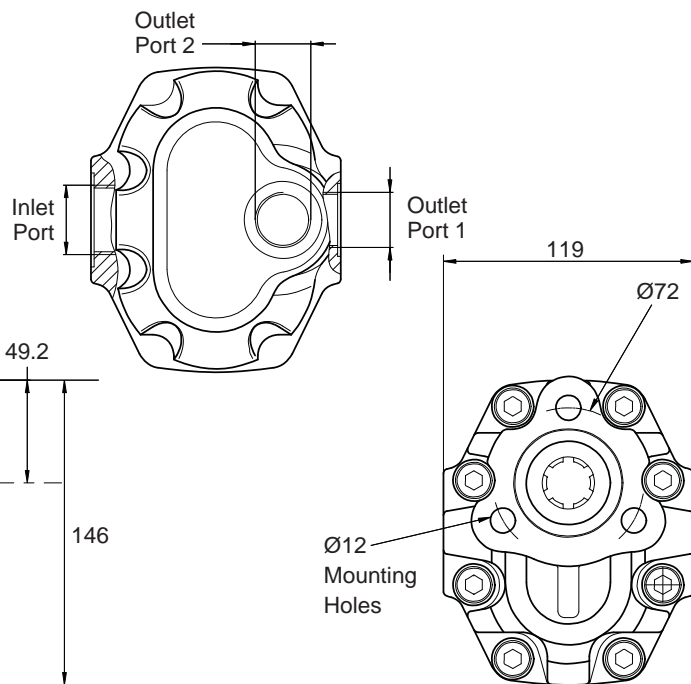
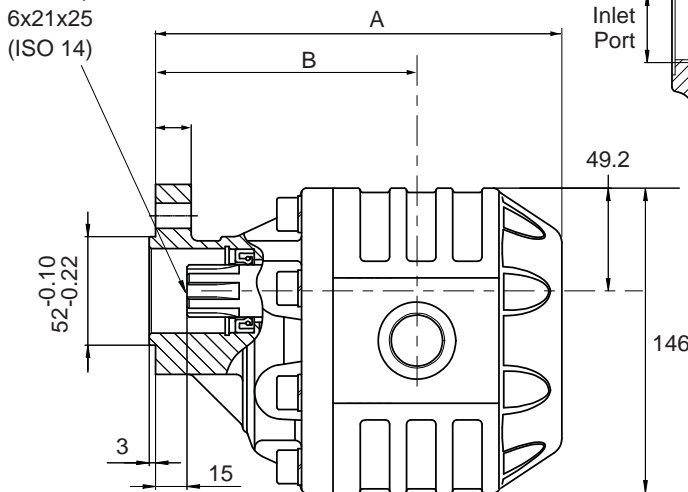
The product range includes gear pumps and piston pumps in both low and high pressure variants, dual flow pumps and variable flow units for specialist applications.

Gear Pump: Tipper Applications



- A range of flows from 17 to 125 cm³/rev
- Compact size for easy installation
- Ideal for close coupled PTO mounting
- 3 - Hole UNI Mounting flange
- Bronze thrust plates for maximum durability
- Available anti-clockwise (left) or clockwise (right) rotation
- Optional output port

Drive Spline
6x21x25
(ISO 14)



Part Number		IN	OUT 1	OUT 2	A	B	Weight
Rotation Left	Rotation Right						
		ISO 228	ISO 228	ISO 228	mm	mm	Kg
EGP017315 3H	EGP017315C 3H	1/2 inch BSP	1/2 inch BSP		152.5	103.5	8.5
EGP027315 3H	EGP027315C 3H				158.5	108	9.5
EGP034300 3H	EGP034300C 3H	3/4 inch BSP	3/4 inch BSP		163.5	109	10.5
EGP043290 3H	EGP043290C 3H				169.5	114	11
EGP061240 3H	EGP061240C 3H	1 inch BSP	1 inch BSP		180.5	120.5	12
EGP082210 3H	EGP082210C 3H	193.5			124.5	13	
EGP100200 3H	EGP100200C 3H	1 1/4 inch BSP	1 inch BSP	3/4 inch BSP	210.5	138.5	14
EGP125180 3H	EGP125180C 3H		226.5	142.5	16		

All dimensions are given in mm unless otherwise stated. Technical Specifications are subject to change without notice.

Gear Pump: Tipper Applications

TECHNICAL FEATURES						
Part Number	Displacement ³/rev cm	Pressure		Max. continuous speed rpm	Max. intermittent speed rpm	Min. speed rpm
		P1 bar	P2 bar			
EGP017315/C 3H	17	315	325	2500	3000	300
EGP027315/C 3H	26					
EGP034300/C 3H	34	300	310	2200	2800	
EGP043290/C 3H	43	290	300	2000	2500	
EGP061240/C 3H	60	240	250	1800	2000	
EGP082210/C 3H	81	210	220	1500	1800	
EGP100200/C 3H	98	200	220			
EGP125180/C 3H	123	180	200			

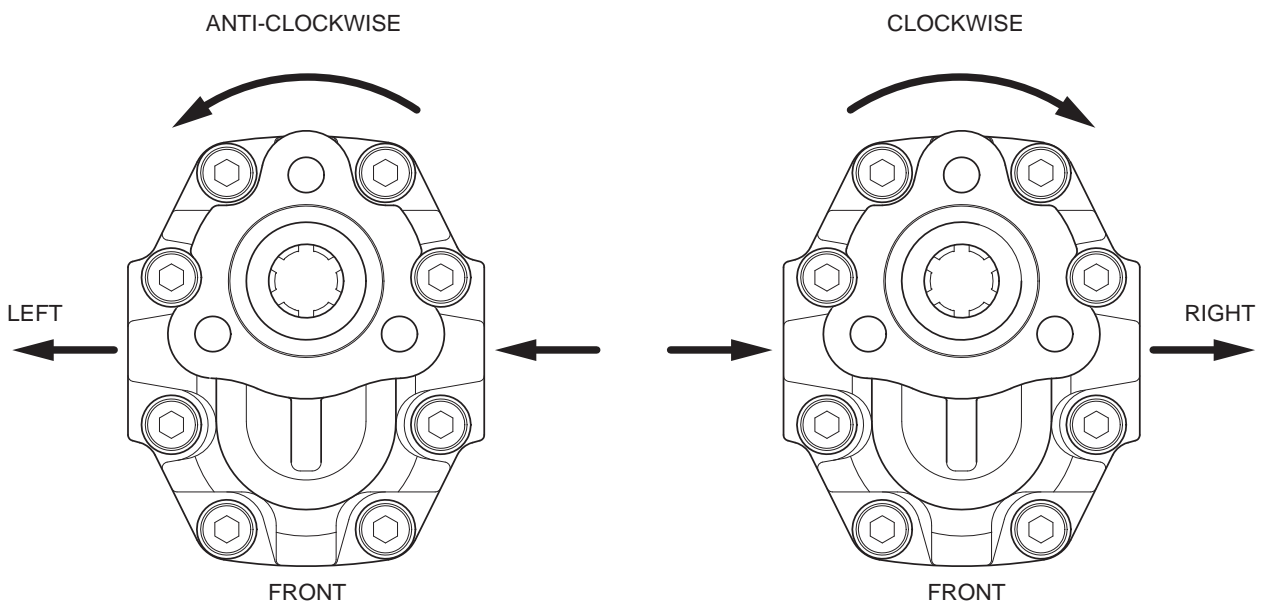
P1= Max. Intermittent pressure (20 sec. max.)

P2= Max. peak pressure (6 sec. max.)

OIL & FILTRATION

- The EGP range is designed primarily for use on tipper applications without filtration.
- The oil should be a good quality hydraulic oil to ISO 6743/4 HM32 for -15° to +27°C working temperature.
- For extended life or for higher duty applications, 25µm absolute return line filtration is recommended.
- Oil cleanliness to be maintained to ISO 4406 class 19/16.
- Oil should be replaced annually.

PUMP ROTATION



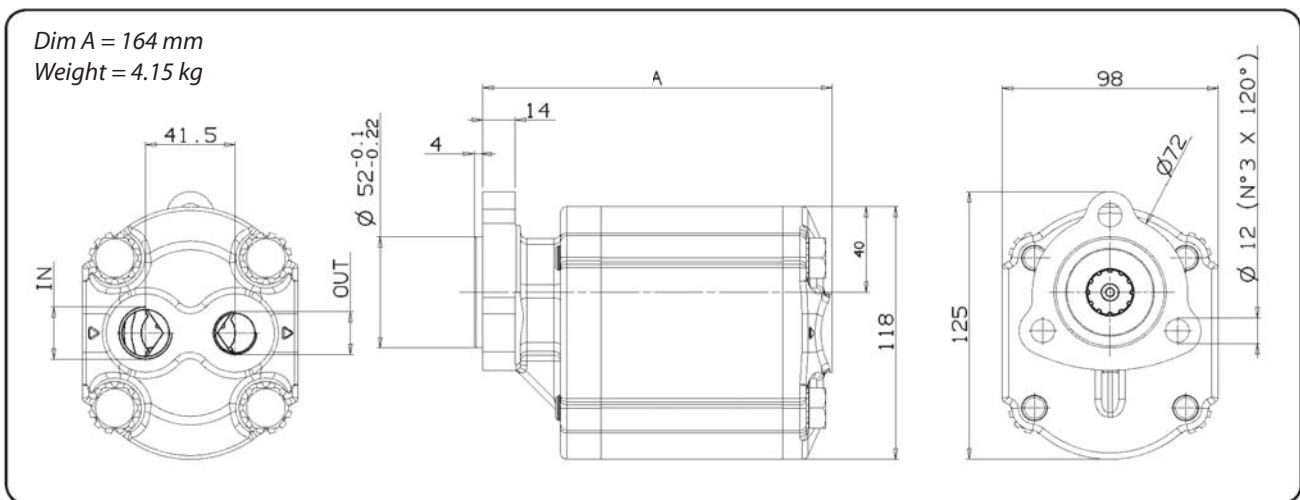
- Pumps can be supplied to suit the rotation required
- If rotation is to be reversed, refer to instructions supplied with the kit

All dimensions are given in mm unless otherwise stated. Technical Specifications are subject to change without notice.

Light Duty Gear Pump: Tipper Applications - EGP025170



- * 3-hole gear pump for light duty applications
- * EGP025170 - anti-clockwise (left) rotation
- * EGP025170C - clockwise (right) rotation
- * 25cm³/rev output flow
- * Medium pressure (220 bar MWP)
- * Compact size for easy installation
- * Ideal for close coupled PTO mounting
- * Bronze trust plates for maximum durability



PIPE ADAPTOR KIT OPTIONS

- Low pressure inlet: AK26 (NR110/3, DS18, LNSC - 1" elbow)
 High pressure outlet: AK78 (NR611/44, DPP45D/SC - 1/2" to 1/2" adaptor)

PERFORMANCE

Displacement	cm ³ /rev	25
Max. working pressure	bar	220
Peak pressure	bar	240
Max. working speed	rpm	1500 @ 200 bar 3200 @ 220 bar 3500 @ no pressure

PIPES

Size: Suction 3/4 inch maximum
 Pressure 1/2 inch maximum
 Pipe runs should be direct and short, with no kinks.

OIL & FILTRATION

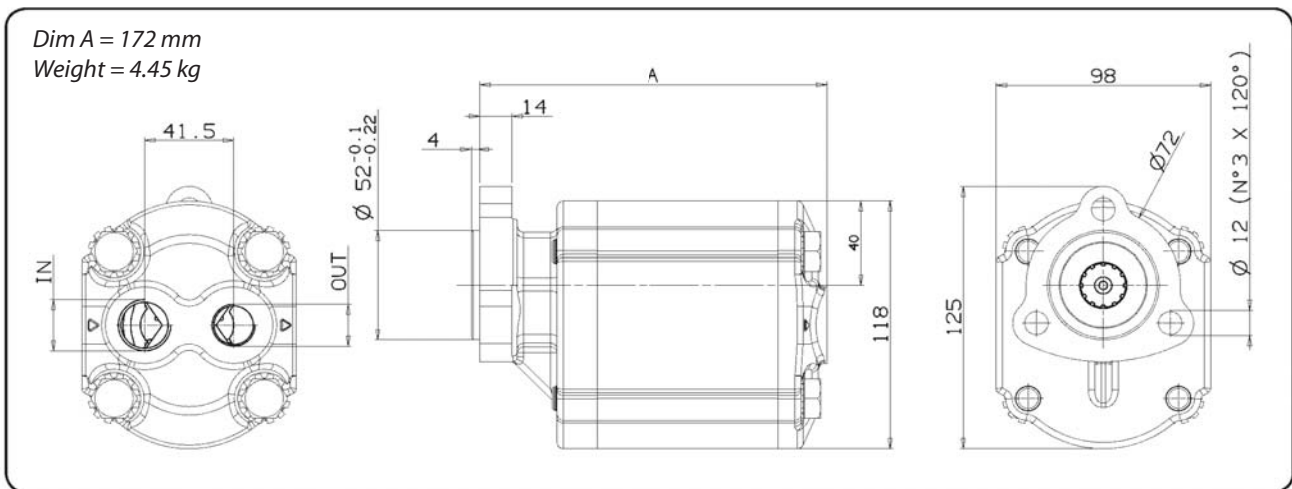
- * This pump is designed for low pressure, intermittent use tipping systems without filtration.
- * The oil should be a good quality hydraulic oil to ISO 6743/4 HM32 for -15° to +27°C working temperature.
- * For extended life 25 um absolute return line filtration is recommended.
- * Oil cleanliness is maintained to ISO 4406 class 19/16.
- * Oil should be replaced annually.

All dimensions are given in mm unless otherwise stated. Technical Specifications are subject to change without notice.

Light Duty Gear Pump: Tipper Applications - EGP032180



- * 3-hole gear pump for light duty applications
- * EGP0321803H - anti-clockwise (left) rotation
- * EGP032180C3H - clockwise (right) rotation
- * 32cm³/rev output flow
- * Medium pressure (200 bar MWP)
- * Compact size for easy installation
- * Ideal for close coupled PTO mounting
- * Bronze trust plates for maximum durability



PIPE ADAPTOR KIT OPTIONS

- Low pressure inlet: AK26 (NR110/3, DS18, LNSC - 1" elbow)
High pressure outlet: AK78 (NR611/44, DPP45D/SC - 1/2" to 1/2" adaptor)

PERFORMANCE

Displacement	cm ³ /rev	32
Max. working pressure	bar	200
Peak pressure	bar	220
Max. working speed	rpm	1500 @ 180 bar 2800 @ 200 bar 3500 @ no pressure

PIPES

- Size: Suction 3/4 inch maximum
Pressure 1/2 inch maximum
Pipe runs should be direct and short, with no kinks.

OIL & FILTRATION

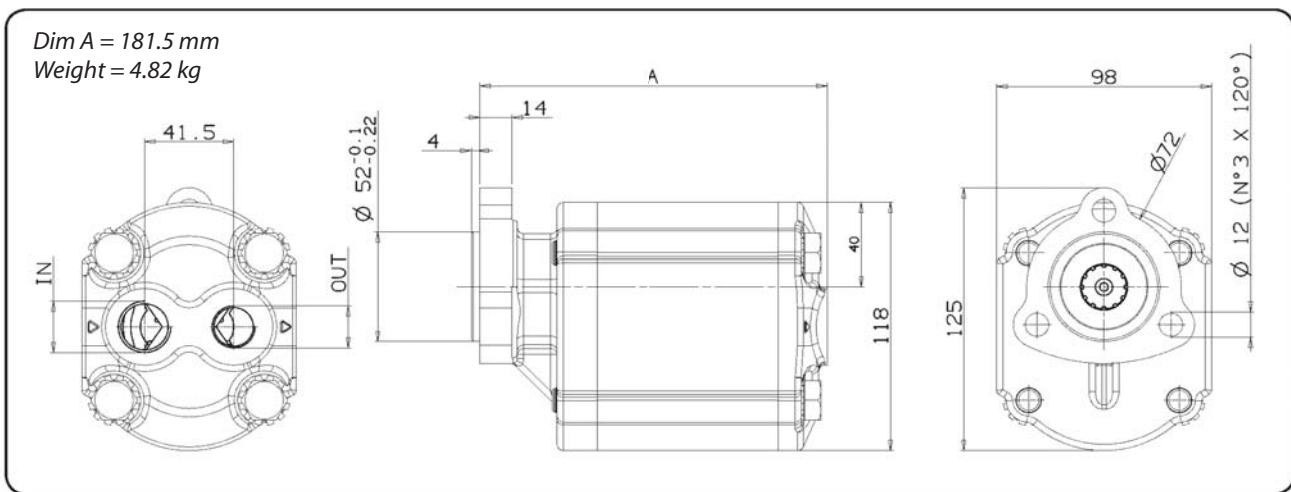
- * This pump is designed for low pressure, intermittent use tipping systems without filtration.
- * The oil should be a good quality hydraulic oil to ISO 6743/4 HM32 for -15° to +27°C working temperature.
- * For extended life 25 um absolute return line filtration is recommended.
- * Oil cleanliness is maintained to ISO 4406 class 19/16.
- * Oil should be replaced annually.

All dimensions are given in mm unless otherwise stated. Technical Specifications are subject to change without notice.

Light Duty Gear Pump: Tipper Applications - EGP040150



- * 3-hole gear pump for light duty applications
- * EGP0401503H - anti-clockwise (left) rotation
- * EGP040150C3H - clockwise (right) rotation
- * 40cm³/rev output flow
- * Medium pressure (170 bar MWP)
- * Compact size for easy installation
- * Ideal for close coupled PTO mounting
- * Bronze trust plates for maximum durability



PIPE ADAPTOR KIT OPTIONS

- Low pressure inlet: AK26 (NR110/3, DS18, LNSC - 1" elbow)
High pressure outlet: AK78 (NR611/44, DPP45D/SC - 1/2" to 1/2" adaptor)

PERFORMANCE

Displacement	cm ³ /rev	40
Max. working pressure	bar	170
Peak pressure	bar	190
Max. working speed	rpm	1500 @ 150 bar 2400 @ 170 bar 3500 @ no pressure

PIPES

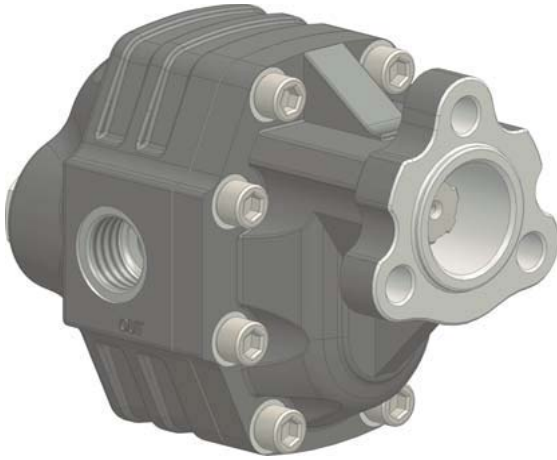
- Size: Suction 3/4 inch maximum
Pressure 1/2 inch maximum
Pipe runs should be direct and short, with no kinks.

OIL & FILTRATION

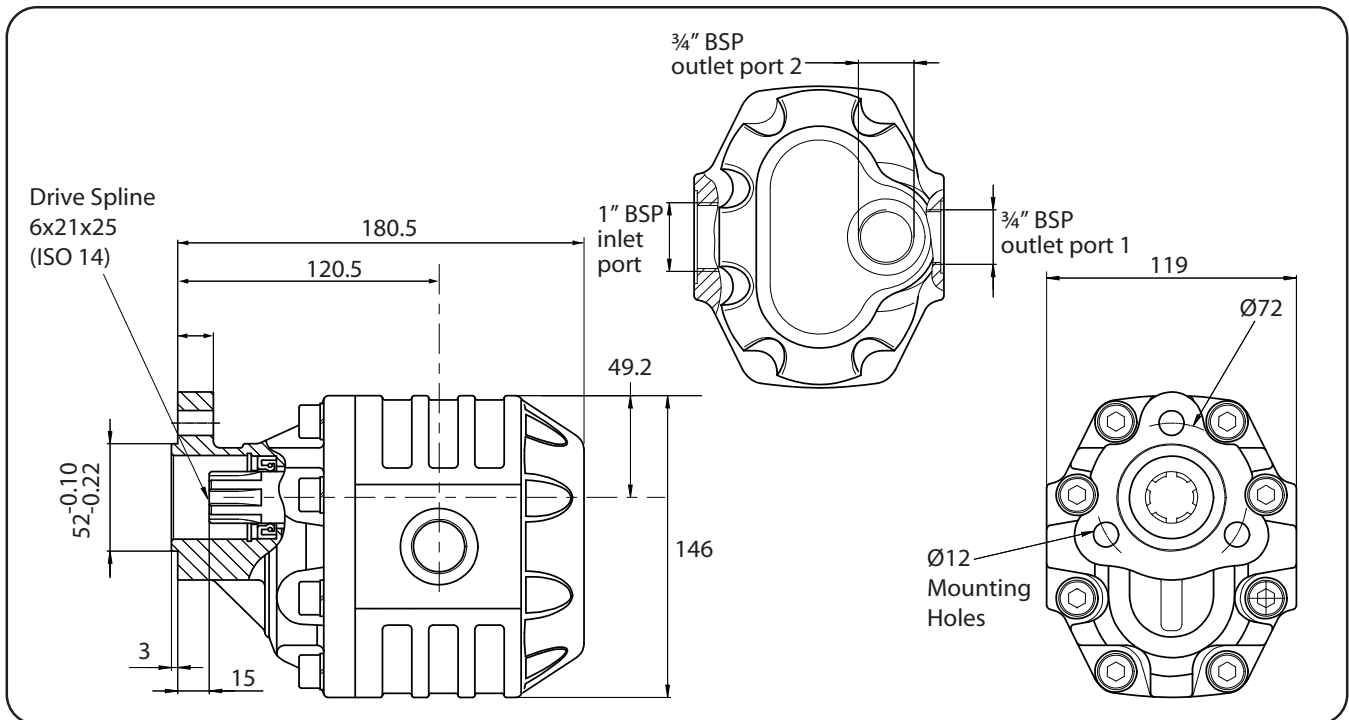
- * This pump is designed for low pressure, intermittent use tipping systems without filtration.
- * The oil should be a good quality hydraulic oil to ISO 6743/4 HM32 for -15^o to +27^oC working temperature.
- * For extended life 25 um absolute return line filtration is recommended.
- * Oil cleanliness is maintained to ISO 4406 class 19/16.
- * Oil should be replaced annually.

All dimensions are given in mm unless otherwise stated. Technical Specifications are subject to change without notice.

3 Hole Gear Pump: Tipper Applications - EGP0612403H



- * 60 cm³/rev output flow
- * Medium pressure (240 bar MWP)
- * Compact size for easy installation
- * Ideal for close coupled PTO mounting
- * 3 hole UNI mounting flange
- * Bronze trust plates for maximum durability
- * Available anti-clockwise (left) rotation as EGP0612403H or clockwise (right) rotation as EGP061240C3H
- * Optional output port



NB. This pump is supplied as complete kit PKS9620/04.

PKS9620/04 pump kit includes:

EGP0612403H	Gear pump
NR1664	Low pressure adaptor (1" BSP push-on 90° elbow)
NR611/42	High pressure adaptor (¾" BSP)
NR627	High pressure elbow (¾" BSP 90°)
DPP45F/SC	Washer (¾" BSP)

* Other adaptor options are available. Please contact Edbro for more information.

All dimensions are given in mm unless otherwise stated. Technical Specifications are subject to change without notice.

3 Hole Gear Pump: Tipper Applications - EGP0612403H

PERFORMANCE

Displacement 60 cm³/rev
 Max. working pressure 240 bar
 Peak pressure 250 bar
 Max working speed 1800 rpm @ 220 bar

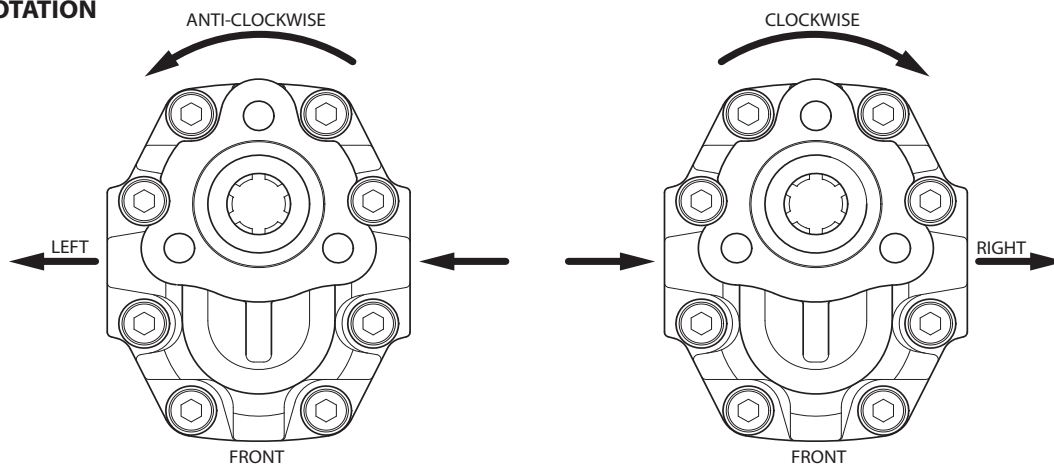
PIPES

Size: Suction 1¼" minimum
 Pressure ¾" minimum
 Pipe runs should be direct and short, with no kinks

OIL & FILTRATION

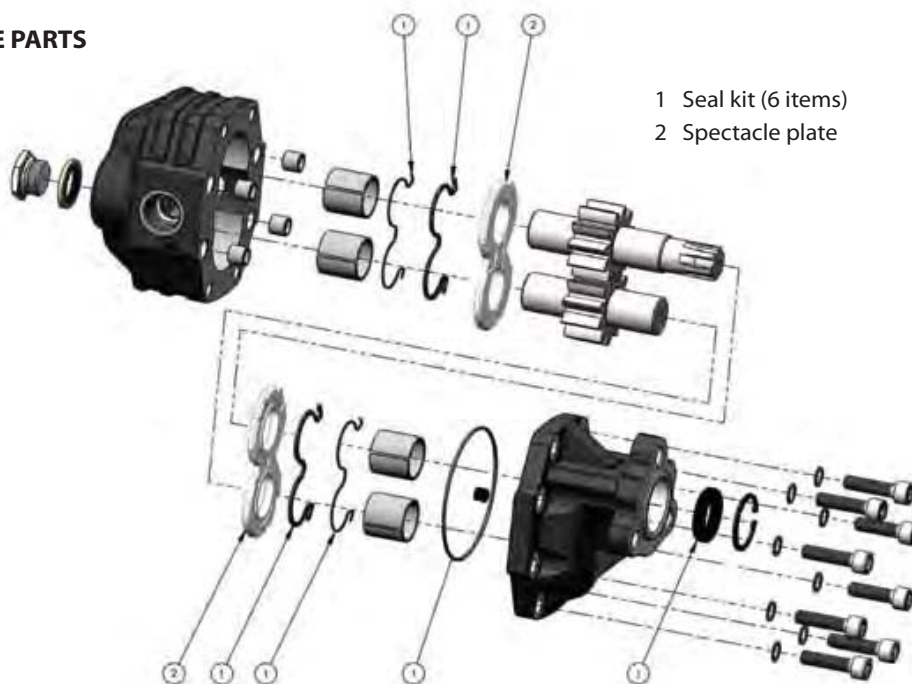
- * This pump is designed for low pressure, intermittent use tipping systems without filtration.
- * The oil should be a good quality hydraulic oil to ISO 6743/4 HM32 for -15 to +27 C working temperature.
- * For extended life 25 µm absolute return line filtration is recommended.
- * Oil cleanliness is maintained to ISO 4406 class 19/16.
- * Oil should be replaced annually.

PUMP ROTATION



- * Pumps can be supplied to suit the rotation required
- * If rotation is to be reversed, refer to instructions supplied with the kit

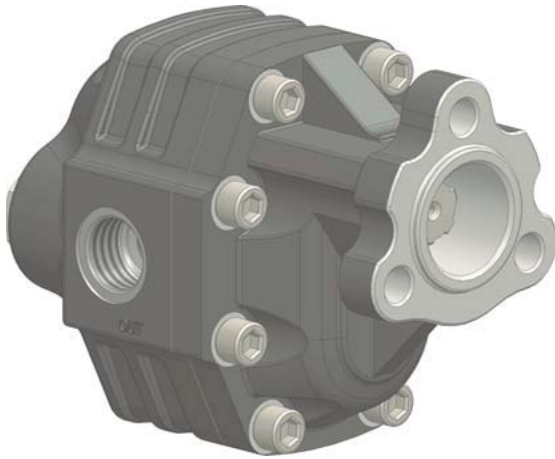
SPARE PARTS



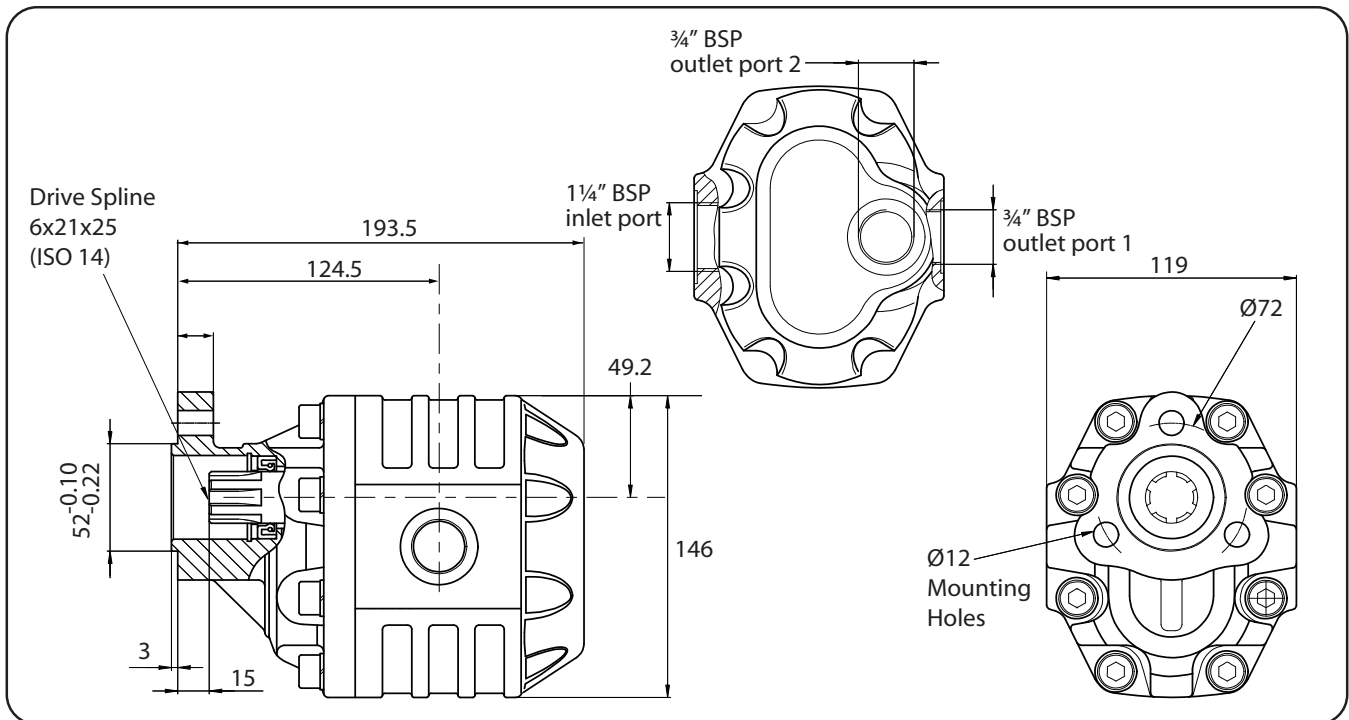
1 Seal kit (6 items)	10590000188	(1 per pump)
2 Spectacle plate	51001000106	(2 per pump)

All dimensions are given in mm unless otherwise stated. Technical Specifications are subject to change without notice.

3 Hole Gear Pump: Tipper Applications - EGP0822103H



- * 81 cm³/rev output flow
- * Medium pressure (240 bar MWP)
- * Compact size for easy installation
- * Ideal for close coupled PTO mounting
- * 3 hole UNI mounting flange
- * Bronze trust plates for maximum durability
- * Available anti-clockwise (left) rotation as EGP0822103H or clockwise (right) rotation as EGP082210C3H
- * Optional output port



NB. This pump is supplied as complete kit PKS9609/03.

PKS9609/03 pump kit includes:

EGP0822103H	Gear pump
NR1639	Low pressure adaptor (1½" BSP push-on 90° elbow)
NR611/42	High pressure adaptor (¾" BSP)
NR627	High pressure elbow (¾" BSP 90°)
DPP45F/SC	Washer (¾" BSP)

* Other adaptor options are available. Please contact Edbro for more information.

All dimensions are given in mm unless otherwise stated. Technical Specifications are subject to change without notice.

3 Hole Gear Pump: Tipper Applications - EGP0822103H

PERFORMANCE

Displacement 81 cm³/rev
 Max. working pressure 210 bar
 Peak pressure 220 bar
 Max working speed 1800 rpm @ 220 bar

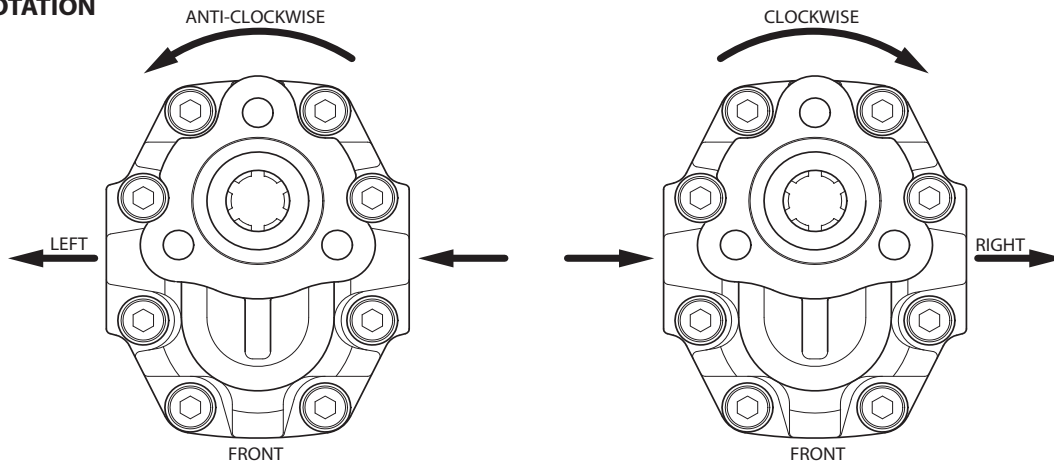
PIPES

Size: Suction 1½" minimum
 Pressure ¾" minimum
 Pipe runs should be direct and short, with no kinks

OIL & FILTRATION

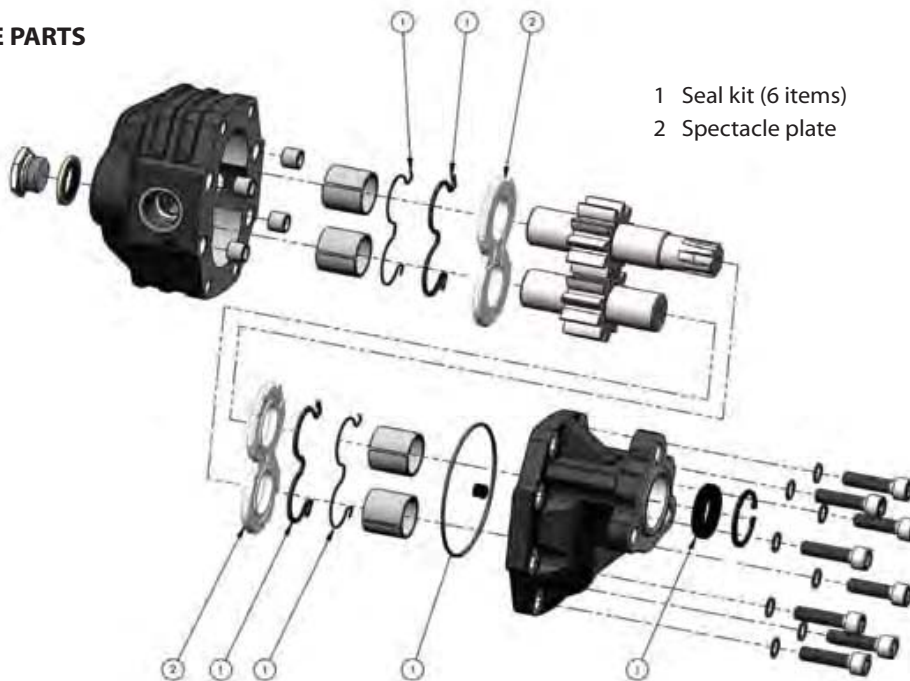
- * This pump is designed for low pressure, intermittent use tipping systems without filtration.
- * The oil should be a good quality hydraulic oil to ISO 6743/4 HM32 for -15 to +27 C working temperature.
- * For extended life 25 µm absolute return line filtration is recommended.
- * Oil cleanliness is maintained to ISO 4406 class 19/16.
- * Oil should be replaced annually.

PUMP ROTATION



- * Pumps can be supplied to suit the rotation required
- * If rotation is to be reversed, refer to instructions supplied with the kit

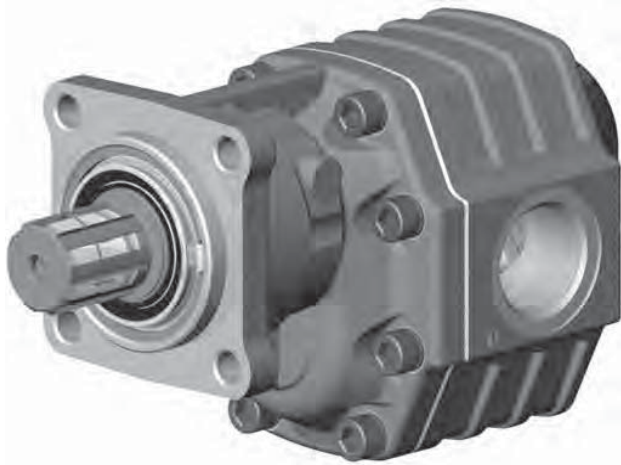
SPARE PARTS



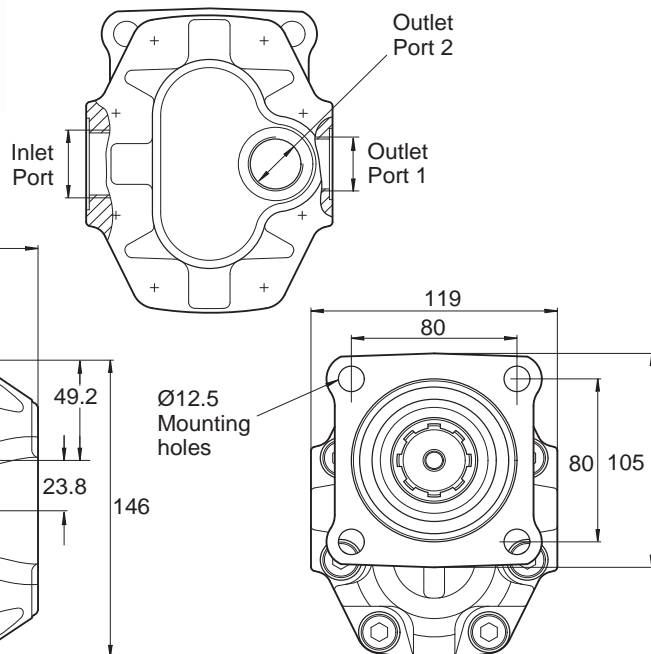
1 Seal kit (6 items)	10590000188	(1 per pump)
2 Spectacle plate	51001000106	(2 per pump)

All dimensions are given in mm unless otherwise stated. Technical Specifications are subject to change without notice.

Gear Pumps: Tipper Application



- A range of flows from 17 to 125 cm³/rev
- Compact size for easy installation
- Ideal for close coupled PTO mounting
- 4 - Hole ISO7653 Mounting flange
- Bronze thrust plates for maximum durability
- Available anti-clockwise (left) or clockwise (right) rotation
- Optional output port



Part Number		IN	OUT 1	OUT 2	A	B	Weight
Rotation Left	Rotation Right						
		ISO 228	ISO 228	ISO 228	mm	mm	Kg
EGP017315	EGP017315C	1/2 inch BSP	1/2 inch BSP		168.5	119.5	11
EGP027315	EGP027315C				174.5	124	12
EGP034300	EGP034300C	3/4 inch BSP	3/4 inch BSP		179.5	125	13
EGP043250	EGP043250C				185.5	130	13.5
EGP061240	EGP061240C				196.5	136.5	14.5
EGP082220	EGP082220C	1 1/4 inch BSP	1 inch BSP 3/4 inch BSP		209.5	140.5	15.5
EGP100220	EGP100220C				226.5	154.5	15
EGP125150	EGP125150C				242.5	158.5	17

All dimensions are given in mm unless otherwise stated. Technical Specifications are subject to change without notice.

Gear Pumps: Tipper Application

TECHNICAL FEATURES						
Part Number	Displacement cm ³ /rev	Pressure		Max. continuous speed rpm	Max. intermittent speed rpm	Min. speed rpm
		P1 bar	P2 bar			
EGP017315/C	17	315	325	2500	3000	300
EGP027315/C	26					
EGP034300/C	34	300	310	2200	2800	
EGP043250/C	43	290	300	2000	2500	
EGP061240/C	60	240	250	1800	2000	
EGP082220/C	81	220	250	1500	1800	
EGP100220/C	98	220				
EGP125150/C	123	180	200			

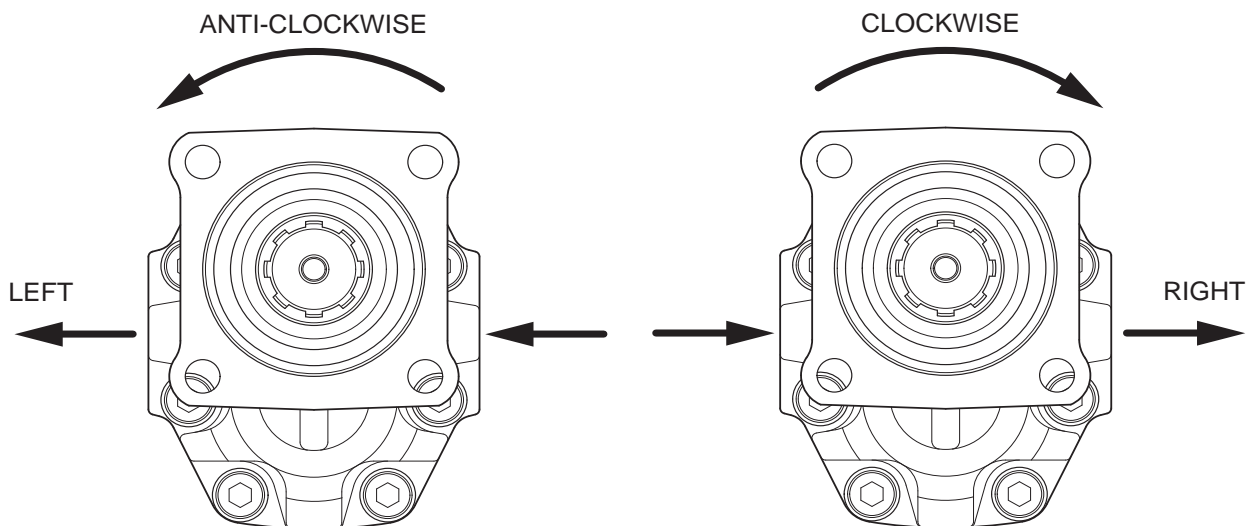
P1= Max. Intermittent pressure (20 sec. max.)

P2= Max. peak pressure (6 sec. max.)

OIL & FILTRATION

- The EGP range is designed primarily for use on tipper applications without filtration.
- The oil should be a good quality hydraulic oil to ISO 6743/4 HM32 for -15° to +27°C working temperature.
- For extended life or for higher duty applications, 25µm absolute return line filtration is recommended.
- Oil cleanliness to be maintained to ISO 4406 class 19/16.
- Oil should be replaced annually.

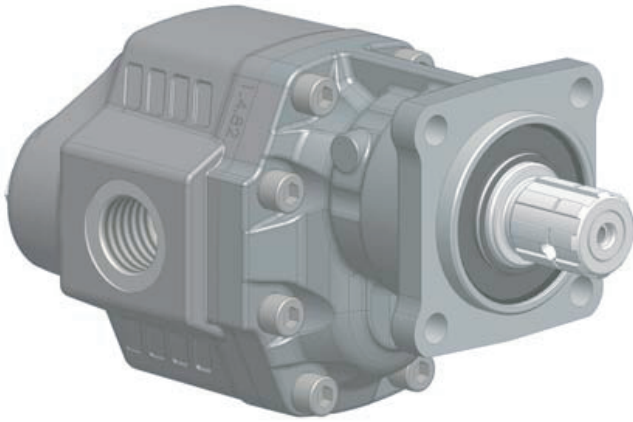
PUMP ROTATION



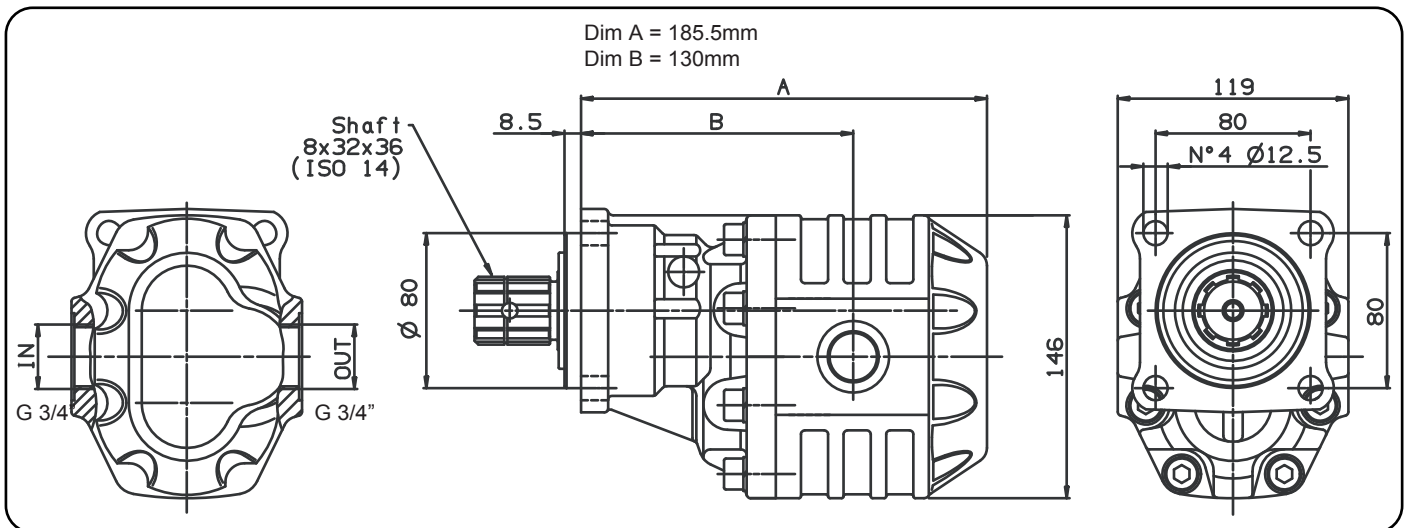
- Pumps can be supplied to suit the rotation required
- If rotation is to be reversed, refer to instructions supplied with the kit

All dimensions are given in mm unless otherwise stated. Technical Specifications are subject to change without notice.

Gear Pump : For tipper application - EGP043250R



- 43 cm³/rev output flow
- Medium pressure (250 bar mwp)
- Compact size for easy installation
- Weight - 14.3kg
- Ideal for close coupled PTO mounting
- 4 - Hole ISO7653 Mounting flange
- Bronze thrust plates for maximum durability
- Bi-directional Pump



Refer to HP to LP Fittings sheet for different size options available.

PERFORMANCE

Displacement	cm ³ /rev	43
Max. Working Pressure	bar	250
Max. Intermittent Pressure	bar	230
Max. Working Speed	rpm	2000
Min. Speed	rpm	300

PIPES

- Size: Suction 1 inch minimum
Pressure 1/2 inch minimum
- Pipe runs should be direct and short, with no kinks.

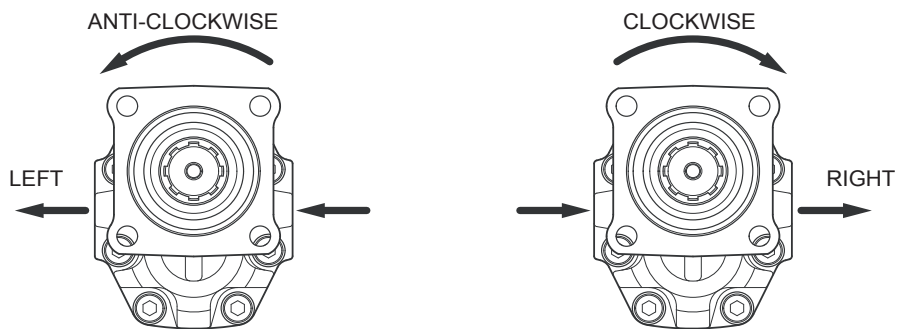
All dimensions are given in mm unless otherwise stated. Technical Specifications are subject to change without notice.

Gear Pump : For tipper application - EGP043250R

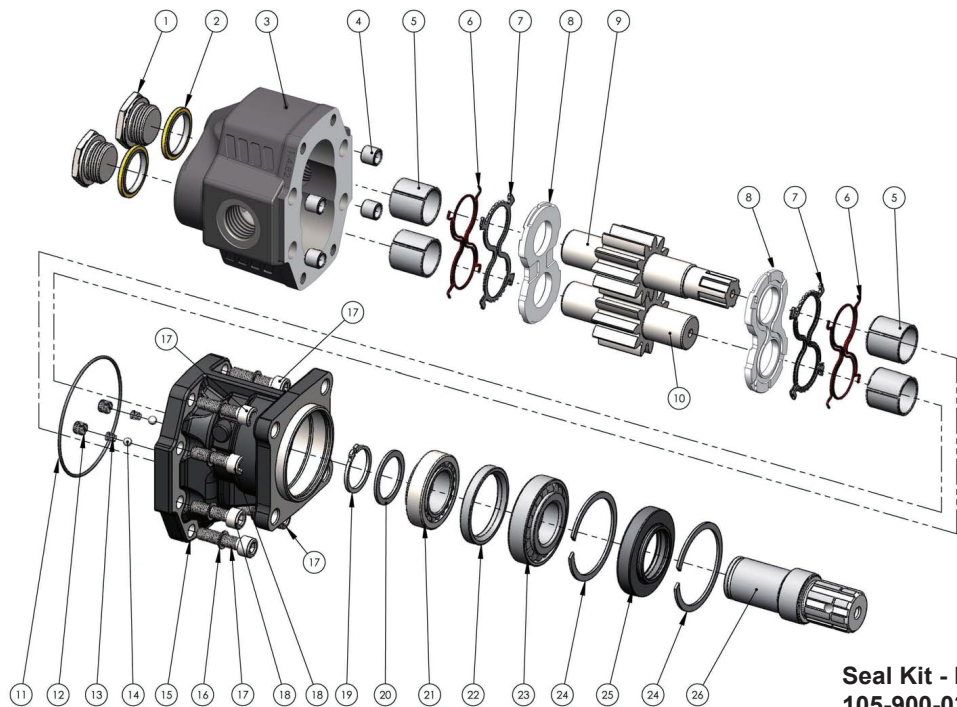
OIL & FILTRATION

- This pump is designed for low pressure, intermittent use, tipper systems without filtration.
- The oil should be a good quality hydraulic oil to ISO 6743/4 HM32 for -15° to +27°C working temperature.
- For extended life or for higher duty applications, 25µm absolute return line filtration is recommended.
- Oil cleanliness to be maintained to ISO 4406 class 19/16.
- Oil should be replaced annually.

PUMP ROTATION
(view from PTO end)



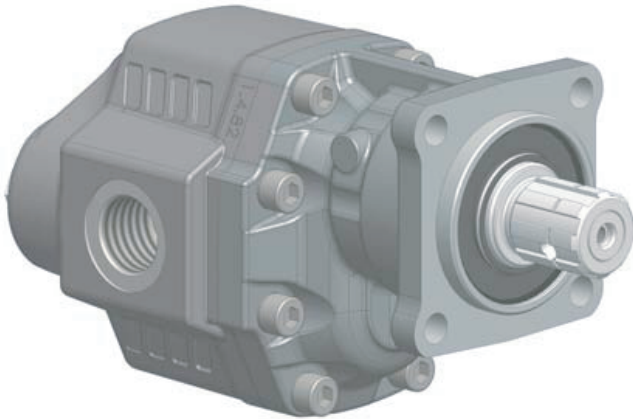
SPARE PARTS



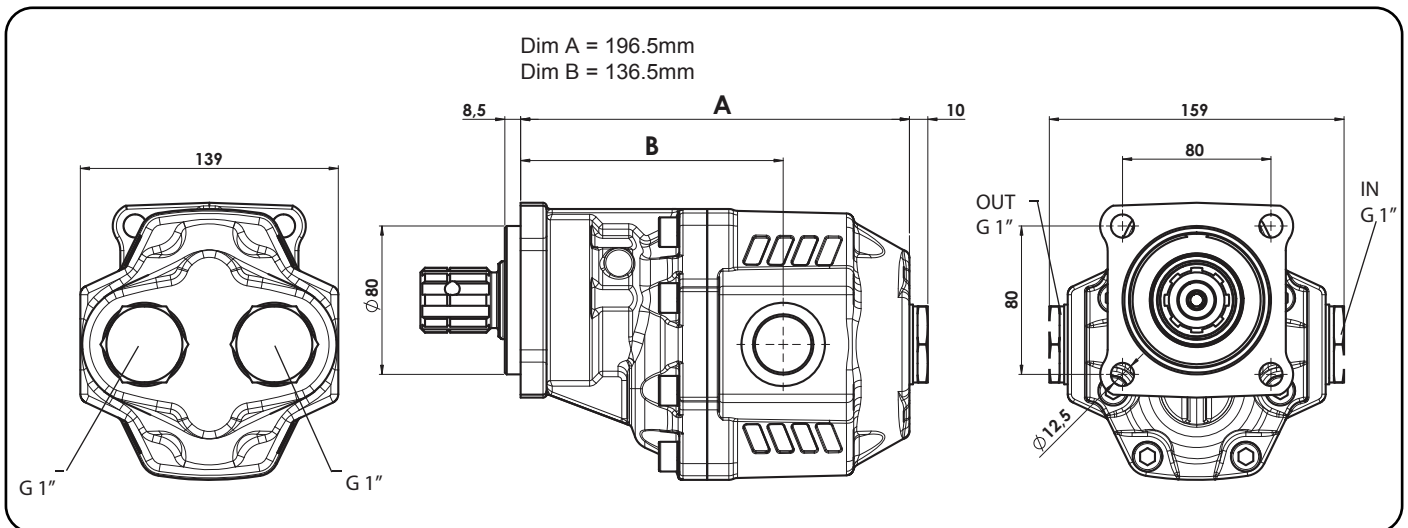
**Seal Kit - Part no:
105-900-0357**

All dimensions are given in mm unless otherwise stated. Technical Specifications are subject to change without notice.

Gear Pump : For tipper application - EGP061240R



- 61 cm³/rev output flow
- Medium pressure (240 bar mwp)
- Compact size for easy installation
- Weight - 15.3kg
- Ideal for close coupled PTO mounting
- 4 - Hole ISO7653 Mounting flange
- Bronze thrust plates for maximum durability
- Bi-directional Pump



Refer to HP to LP Fittings sheet for different size options available.

PERFORMANCE

Displacement	cm ³ /rev	61
Max. Working Pressure	bar	240
Max. Intermitent Pressure	bar	220
Max. Working Speed	rpm	1800
Min. Speed	rpm	300

PIPES

- Size: Suction 1 1/2" inch minimum
Pressure 3/4 inch minimum
- Pipe runs should be direct and short, with no kinks.

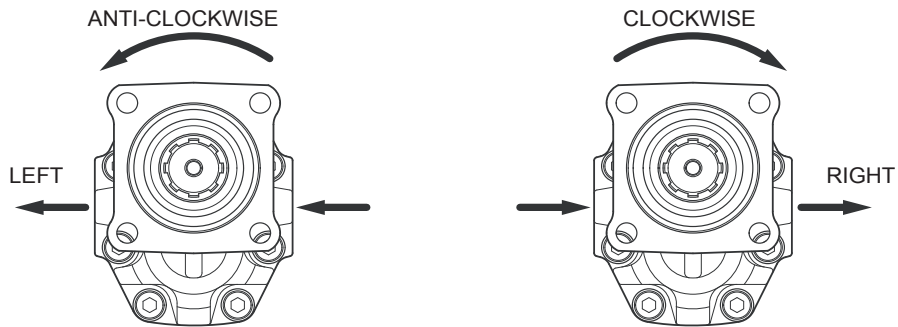
All dimensions are given in mm unless otherwise stated. Technical Specifications are subject to change without notice.

Gear Pump : For tipper application - EGP061240R

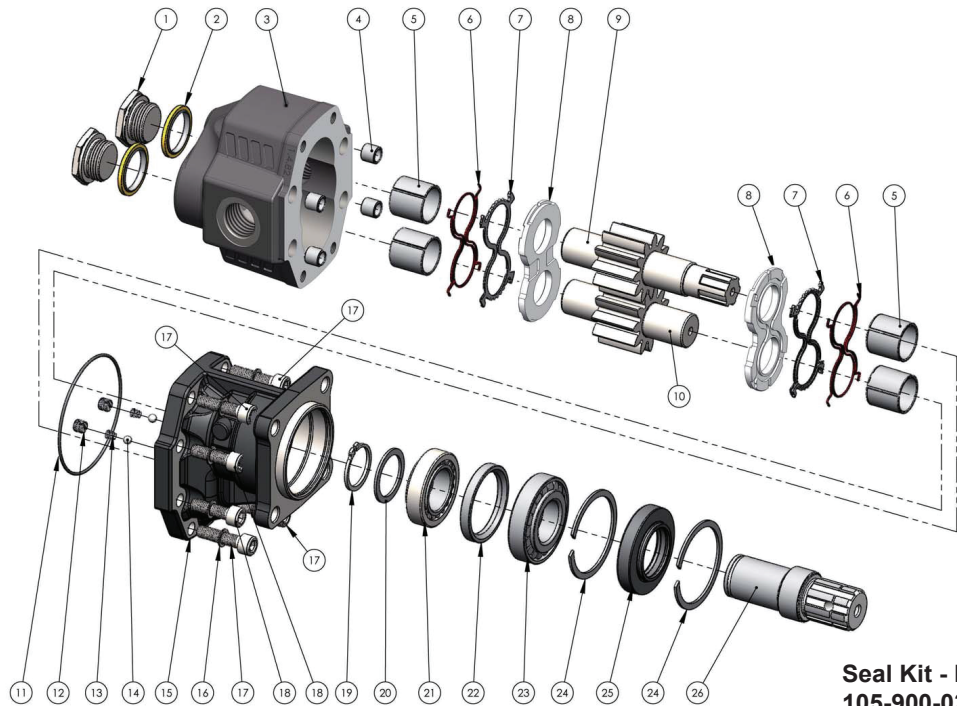
OIL & FILTRATION

- This pump is designed for low pressure, intermittent use, tipper systems without filtration.
- The oil should be a good quality hydraulic oil to ISO 6743/4 HM32 for -15° to +27°C working temperature.
- For extended life or for higher duty applications, 25µm absolute return line filtration is recommended.
- Oil cleanliness to be maintained to ISO 4406 class 19/16.
- Oil should be replaced annually.

PUMP ROTATION
(view from PTO end)

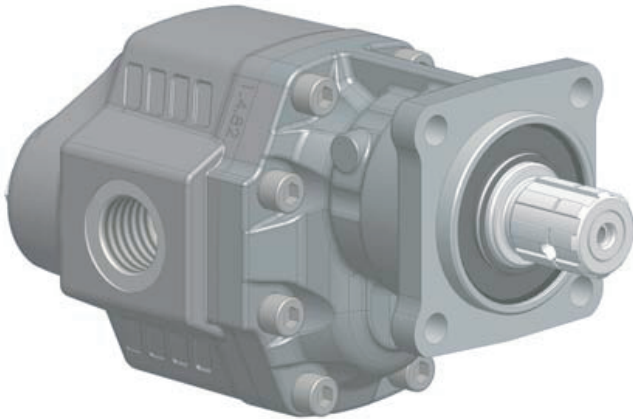


SPARE PARTS

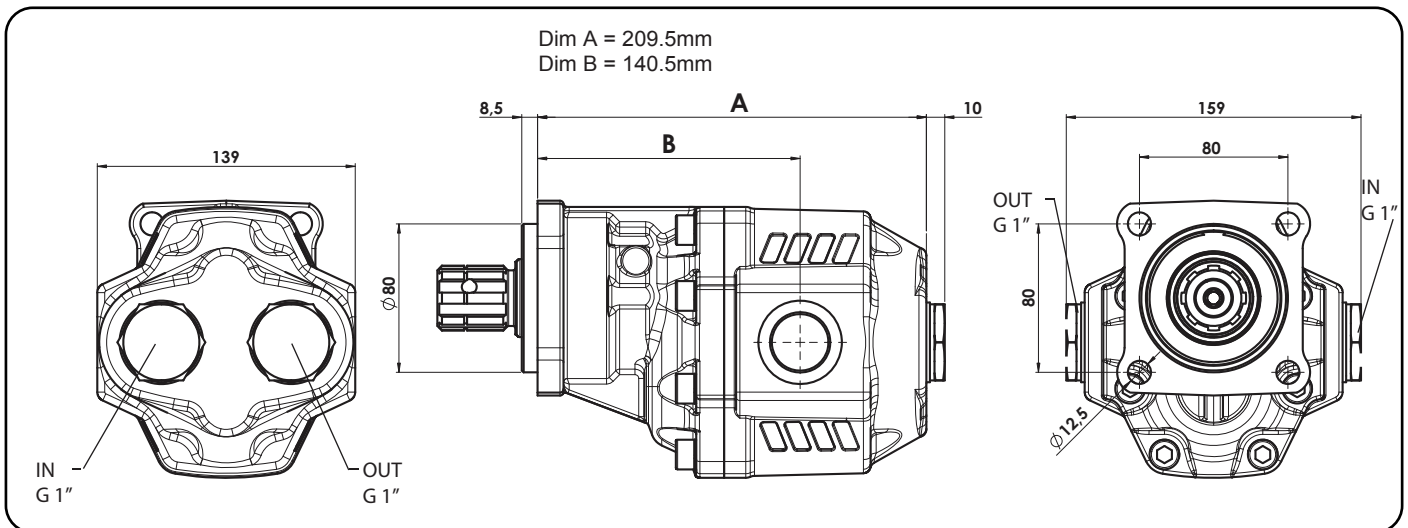


**Seal Kit - Part no:
105-900-0357**

Gear Pump : For tipper application - EGP082220R



- 82 cm³/rev output flow
- Medium pressure (220 bar mwp)
- Compact size for easy installation
- Weight - 16.3kg
- Ideal for close coupled PTO mounting
- 4 - Hole ISO7653 Mounting flange
- Bronze thrust plates for maximum durability
- Bi-directional Pump



Refer to HP to LP Fittings sheet for different size options available.

PERFORMANCE

Displacement	cm ³ /rev	82
Max. Working Pressure	bar	220
Max. Intermittent Pressure	bar	200
Max. Working Speed	rpm	1500
Min. Speed	rpm	300

PIPES

- Size: Suction 1 1/2" inch minimum
Pressure 3/4" inch minimum
- Pipe runs should be direct and short, with no kinks.

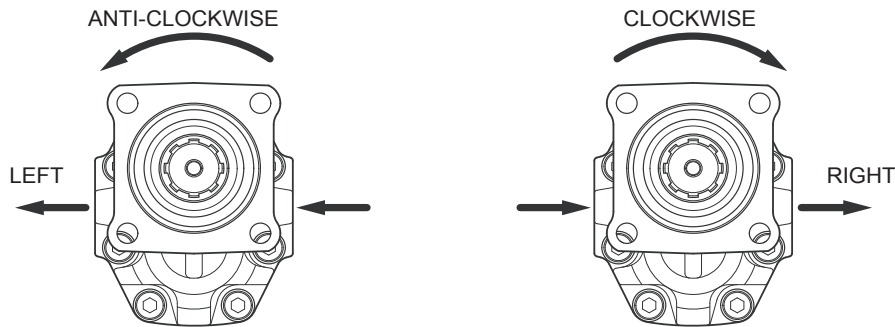
All dimensions are given in mm unless otherwise stated. Technical Specifications are subject to change without notice.

Gear Pump : For tipper application - EGP0082220R

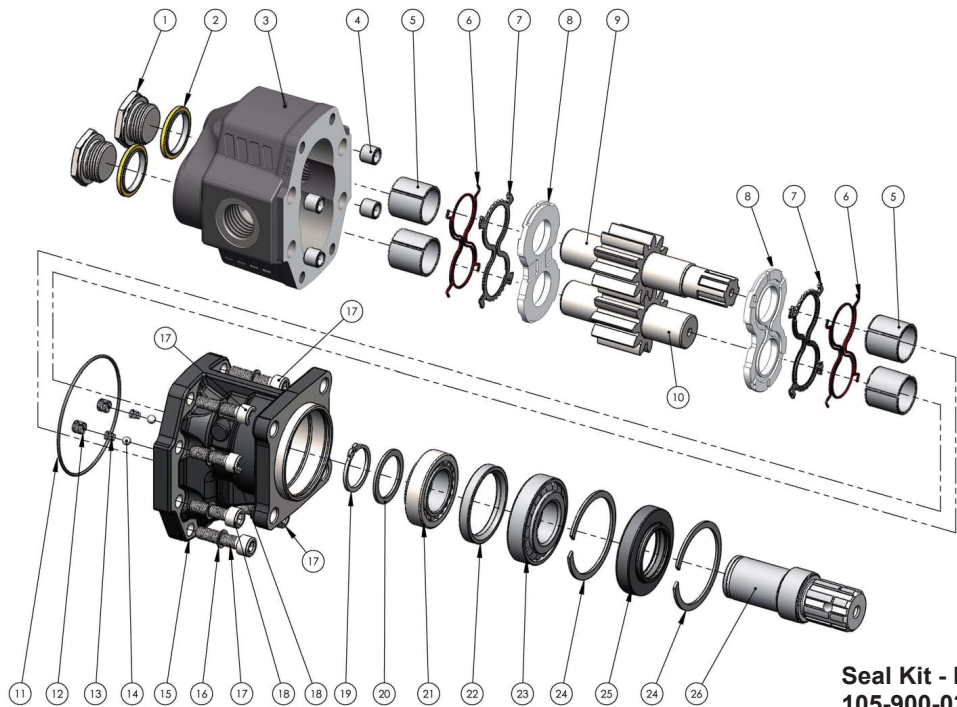
OIL & FILTRATION

- This pump is designed for low pressure, intermittent use, tipper systems without filtration.
- The oil should be a good quality hydraulic oil to ISO 6743/4 HM32 for -15° to +27°C working temperature.
- For extended life or for higher duty applications, 25µm absolute return line filtration is recommended.
- Oil cleanliness to be maintained to ISO 4406 class 19/16.
- Oil should be replaced annually.

PUMP ROTATION
(view from PTO end)



SPARE PARTS



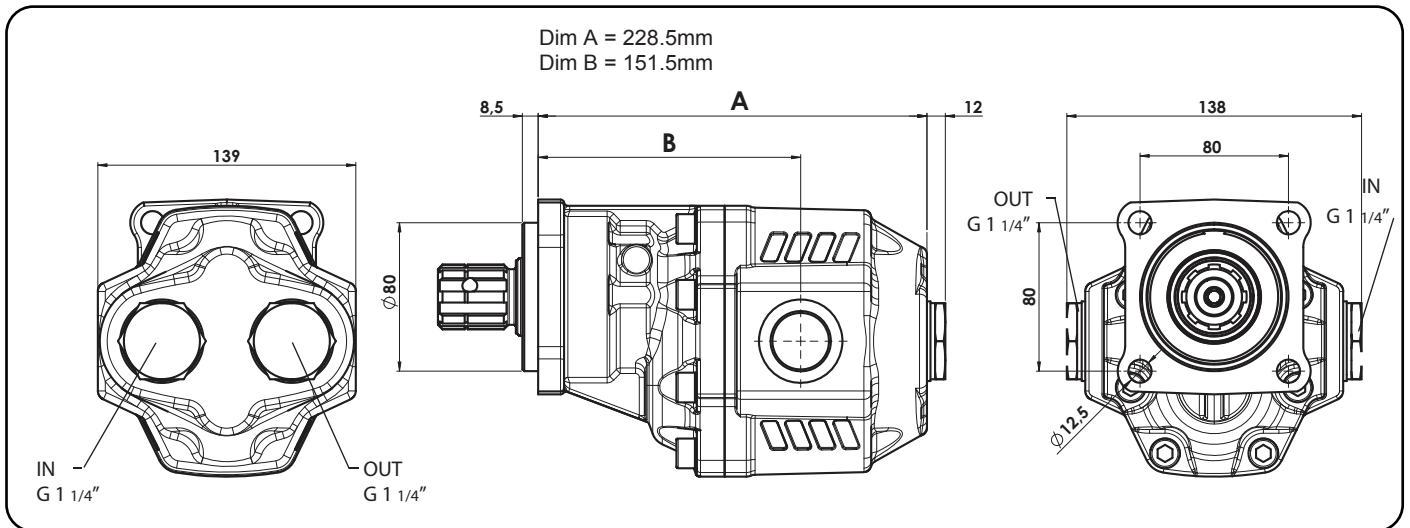
Gear and Piston Pumps

All dimensions are given in mm unless otherwise stated. Technical Specifications are subject to change without notice.

Gear Pump for Tipper Applications - EGP090250R



- 90cm³/rev output flow
- Medium pressure (250 bar mwp)
- Compact size for easy installation
- Weight - 19.5kg
- Ideal for close coupled PTO mounting
- 4 - Hole ISO7653 mounting flange
- Bronze thrust plates for maximum durability
- Bi-directional



Refer to HP to LP Fittings sheet for different size options available.

PERFORMANCE

Displacement	cm ³ /rev	90
Max. Working Pressure	bar	250
Max. Intermittent Pressure	bar	230
Max. Working Speed	rpm	1800
Min. Speed	rpm	300

PIPES

- Size: Suction 1 1/2" inch minimum
Pressure 3/4" inch minimum
- Pipe runs should be direct and short, with no kinks.

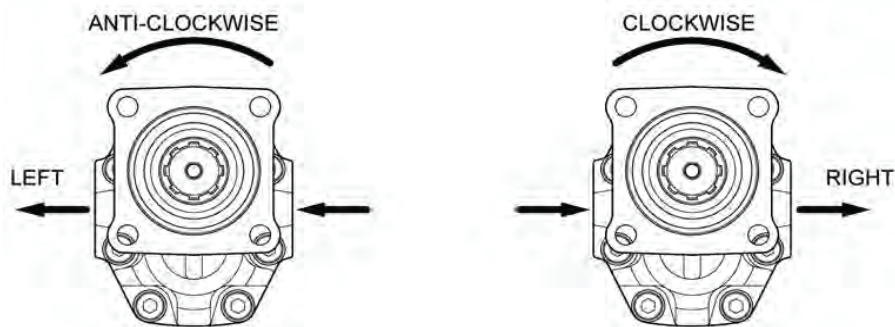
All dimensions are given in mm unless otherwise stated. Technical Specifications are subject to change without notice.

Gear Pump for Tipper Applications - EGP090250R

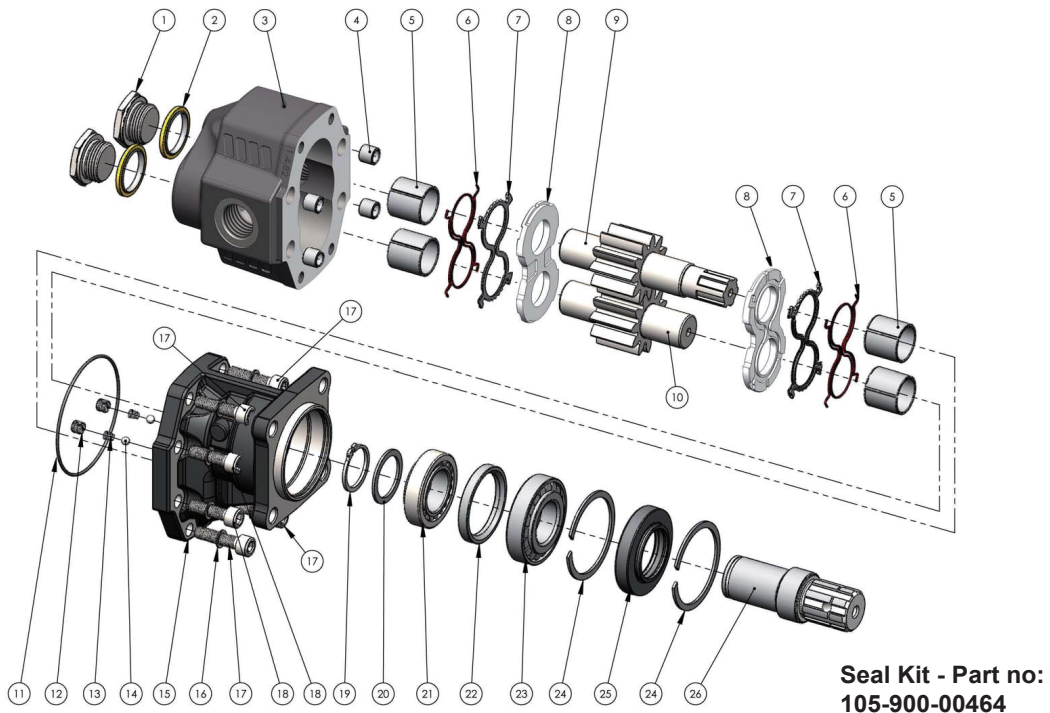
OIL & FILTRATION

- This pump is designed for low pressure, intermittent use tipping systems without filtration.
- The oil should be a good quality hydraulic oil to ISO 6743/4 HM32 for -15° to $+27^{\circ}\text{C}$ working temperature.
- For extended life or for higher duty applications, $25\ \mu\text{m}$ absolute return line filtration is recommended.
- Oil cleanliness is maintained to ISO 4406 class 19/16.
- Oil should be replaced annually.

PUMP ROTATION

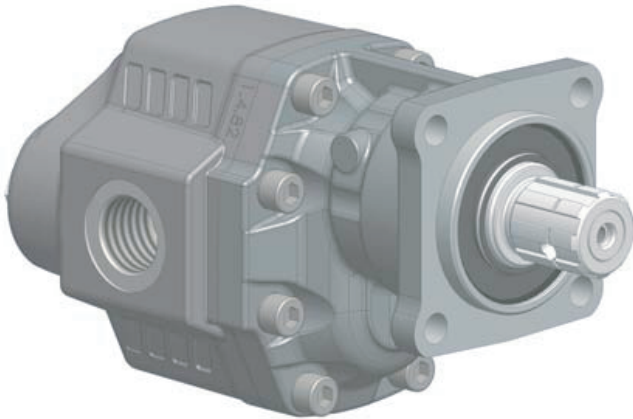


SPARE PARTS

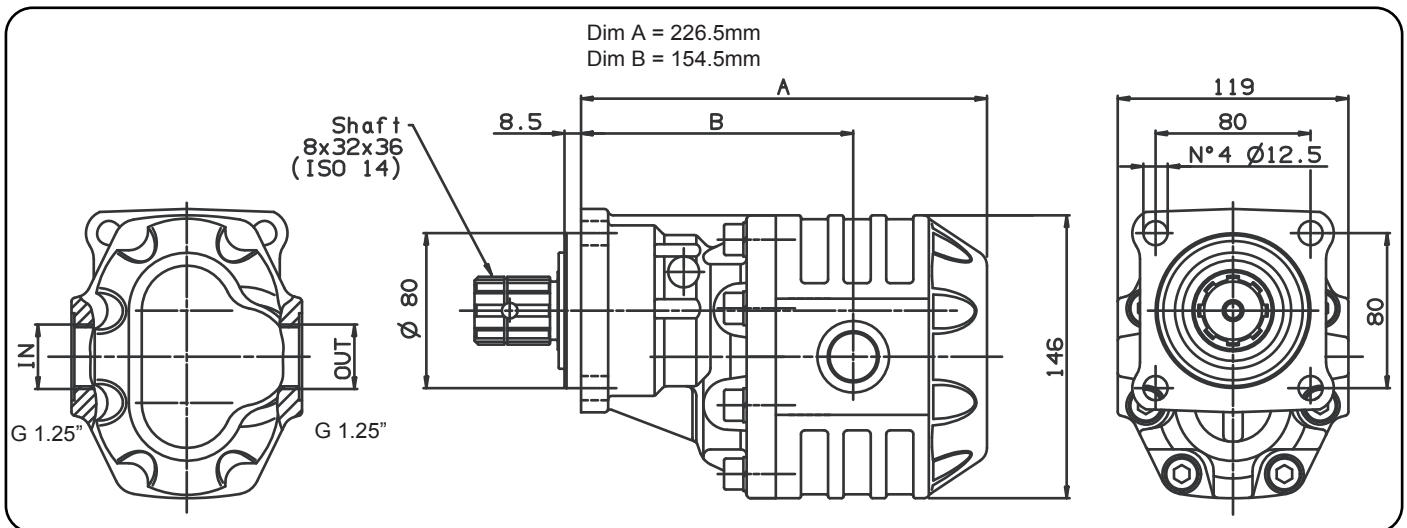


All dimensions are given in mm unless otherwise stated. Technical Specifications are subject to change without notice.

Gear Pump : For tipper application - EGP100220R



- 100cm³/rev output flow
- Medium pressure (220 bar mwp)
- Compact size for easy installation
- Weight - 15.8kg
- Ideal for close coupled PTO mounting
- 4 - Hole ISO7653 Mounting flange
- Bronze thrust plates for maximum durability
- Bi-directional Pump



Refer to HP to LP Fittings sheet for different size options available.

PERFORMANCE

Displacement	cm ³ /rev	100
Max. Working Pressure	bar	220
Max. Intermittent Pressure	bar	200
Max. Working Speed	rpm	1500
Min. Speed	rpm	300

PIPES

- Size: Suction 1 1/2" inch minimum
Pressure 3/4" inch minimum
- Pipe runs should be direct and short, with no kinks.

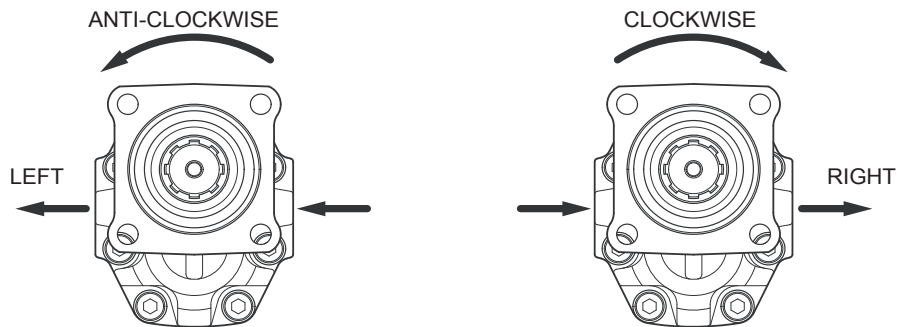
All dimensions are given in mm unless otherwise stated. Technical Specifications are subject to change without notice.

Gear Pump : For tipper application - EGP0100220R

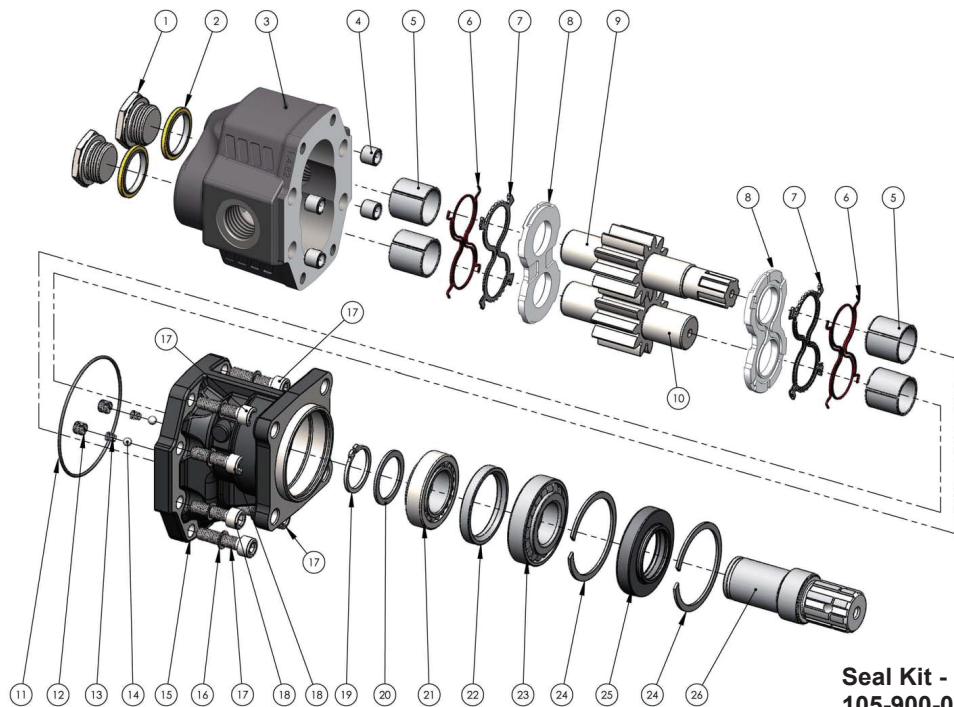
OIL & FILTRATION

- This pump is designed for low pressure, intermittent use, tipper systems without filtration.
- The oil should be a good quality hydraulic oil to ISO 6743/4 HM32 for -15° to +27°C working temperature.
- For extended life or for higher duty applications, 25µm absolute return line filtration is recommended.
- Oil cleanliness to be maintained to ISO 4406 class 19/16.
- Oil should be replaced annually.

PUMP ROTATION
(view from PTO end)



SPARE PARTS

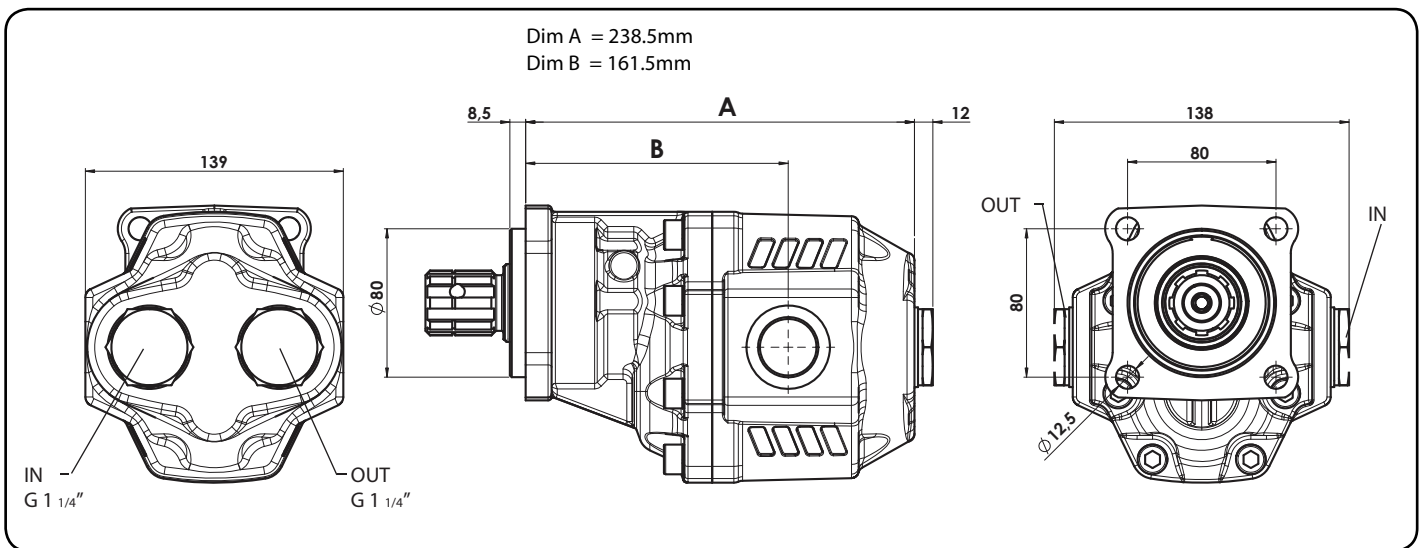


**Seal Kit - Part no:
105-900-0357**

Gear Pump for Tipper Applications - EGP112225R



- 112cm³/rev output flow
- Medium pressure (240 bar mwp)
- Compact size for easy installation
- Weight - 20kg
- Ideal for close coupled PTO mounting
- 4 - Hole ISO7653 mounting flange
- Bronze thrust plates for maximum durability
- Bi-directional



Refer to HP to LP Fitting sheet for different size options available.

PERFORMANCE

Displacement	cm ³ /rev	112
Max. Working Pressure	bar	240
Max. Intermittent Pressure	bar	225
Max. Working Speed	rpm	1800
Min. Speed	rpm	300

PIPES

- Size: Suction 2" inch minimum
Pressure 1" inch minimum
- Pipe runs should be direct and short, with no kinks.

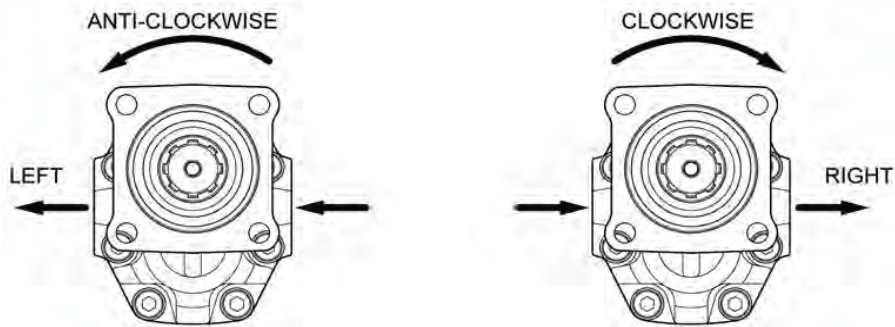
All dimensions are given in mm unless otherwise stated. Technical Specifications are subject to change without notice.

Gear Pump for Tipper Applications - EGP112225R

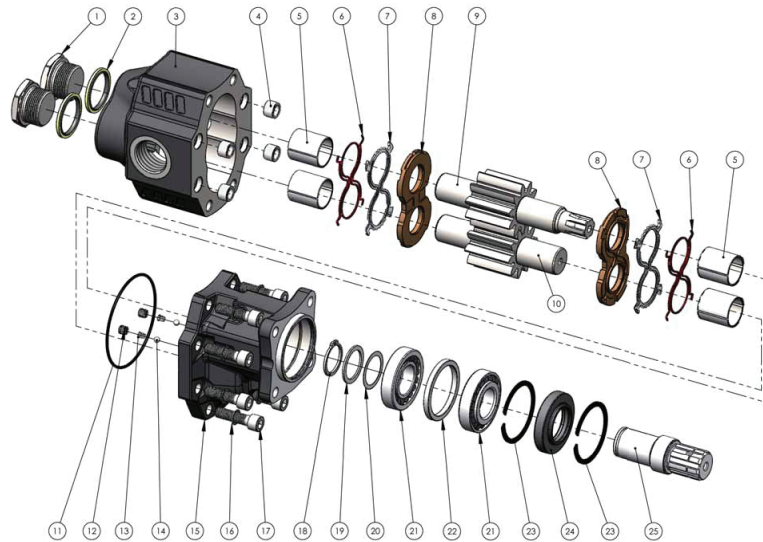
OIL & FILTRATION

- This pump is designed for low pressure, intermittent use tipping systems without filtration.
- The oil should be a good quality hydraulic oil to ISO 6743/4 HM32 for -15° to +27°C working temperature.
- For extended life or for higher duty applications, 25 µm absolute return line filtration is recommended.
- Oil cleanliness is maintained to ISO 4406 class 19/16.
- Oil should be replaced annually.

PUMP ROTATION



SPARE PARTS



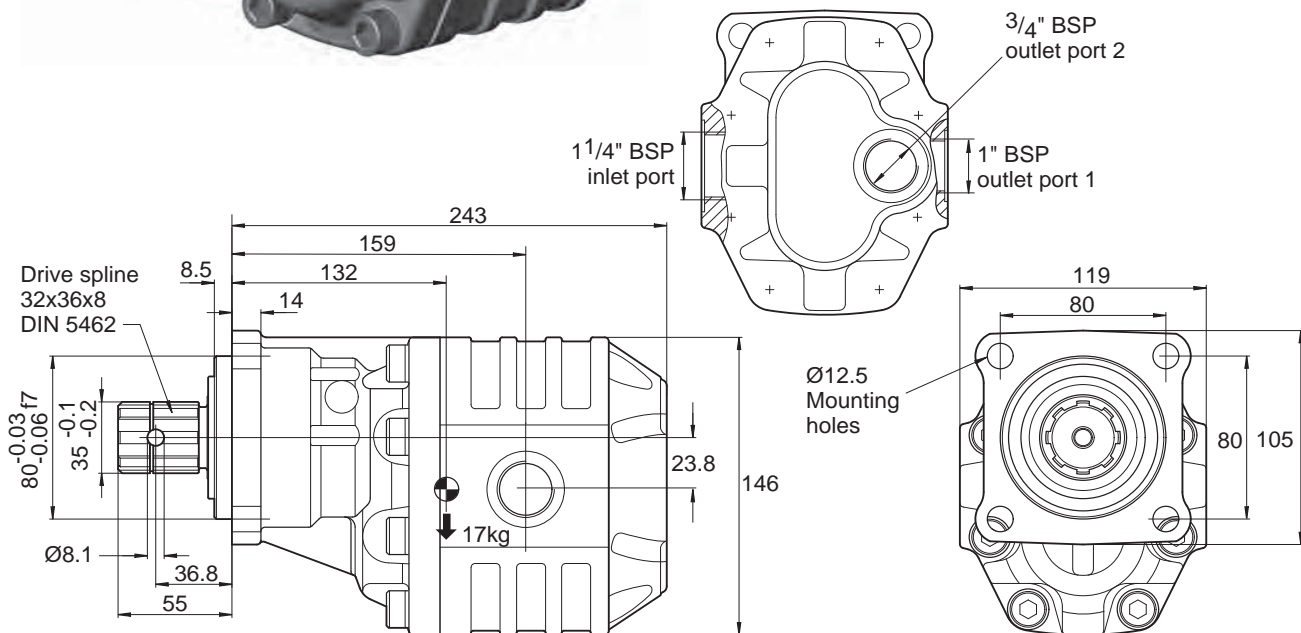
Seal Kit - Part no:
105-900-00464

All dimensions are given in mm unless otherwise stated. Technical Specifications are subject to change without notice.

Gear Pump: Tipper applications - EGP125150



- 125 cm³/rev output flow
- Medium pressure (150 bar mwp)
- Compact size for easy installation
- Ideal for close coupled PTO mounting
- 4 - Hole ISO7653 Mounting flange
- Bronze thrust plates for maximum durability
- Available anti-clockwise (left) or clockwise (right) rotation
- Optional output port



Part Number	Description
EGP125150	Anti - clockwise (left) rotation
EGP125150C	Clockwise (right) rotation

PIPE ADAPTOR KIT OPTIONS

Part Number	Low Pressure Inlet	High Pressure Outlet
AK84	1 1/2 inch push-on 90° elbow (NR1639)	3/4 inch BSP 90° elbow (NR611/42, DPP45F, NR627)
AK85	1 1/2 inch push-on 90° elbow (NR1639)	3/4 inch BSP straight (NR611/42, DPP45F)

All dimensions are given in mm unless otherwise stated. Technical Specifications are subject to change without notice.

Gear Pump: Tipper applications - EGP125150

PERFORMANCE

Displacement	cm ³ /rev	125
Max. Working Pressure	bar	150
Peak Pressure	bar	180
Max. Working Speed	rpm	1800 @ 160bar 3500 @ no pressure

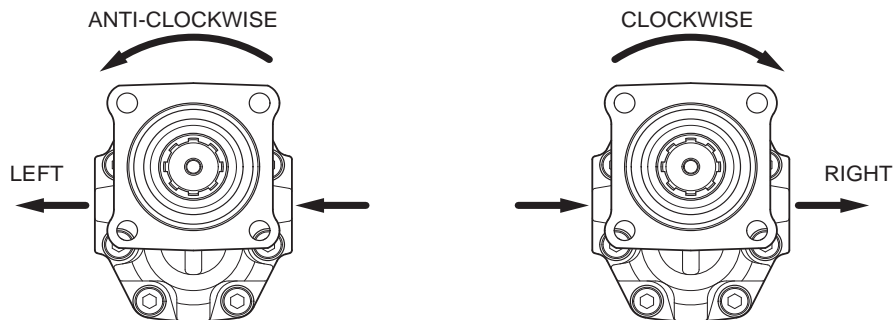
PIPES

- Size: Suction 1 1/2 inch minimum
Pressure 3 1/4 inch minimum
- Pipe runs should be direct and short, with no kinks.

OIL & FILTRATION

- This pump is designed for low pressure, intermittent use, tipper systems without filtration.
- The oil should be a good quality hydraulic oil to ISO 6743/4 HM32 for -15° to +27°C working temperature.
- For extended life or for higher duty applications, 25µm absolute return line filtration is recommended.
- Oil cleanliness to be maintained to ISO 4406 class 19/16.
- Oil should be replaced annually.

PUMP ROTATION



- Pumps can be supplied to suit the rotation required
- If rotation is to be reversed, refer to instructions supplied with the kit

Gear Pumps: Low Pressure Adaptors



PUMP SIZE	Inlet Port	1" 90°	1.25" 90 °	1.5" 45°	1.5" 90°	2" 90°	2" 45°
EGP017	0.5" BSP	NR1672	NR1677	-	-	-	-
EGP027	0.75" BSP	NR1678	NR1679	NR1742	NR1644	-	-
EGP034	0.75" BSP	NR1678	NR1679	NR1742	NR1644	-	-
EGP043	0.75" BSP	NR1678	NR1679	NR1742	NR1644	-	-
EGP061	1" BSP	-	NR1681	-	NR1644	NR1680	-
EGP082	1.25" BSP	-	-	-	NR1639	NR1682	NR1683
EGP100	1.25" BSP	-	-	-	NR1639	NR1682	NR1683
EGP125	1.25" BSP	-	-	-	NR1639	NR1682	NR1683

Adaptor available: NR1686 – 0.5"bsp male to 0.75"bsp female

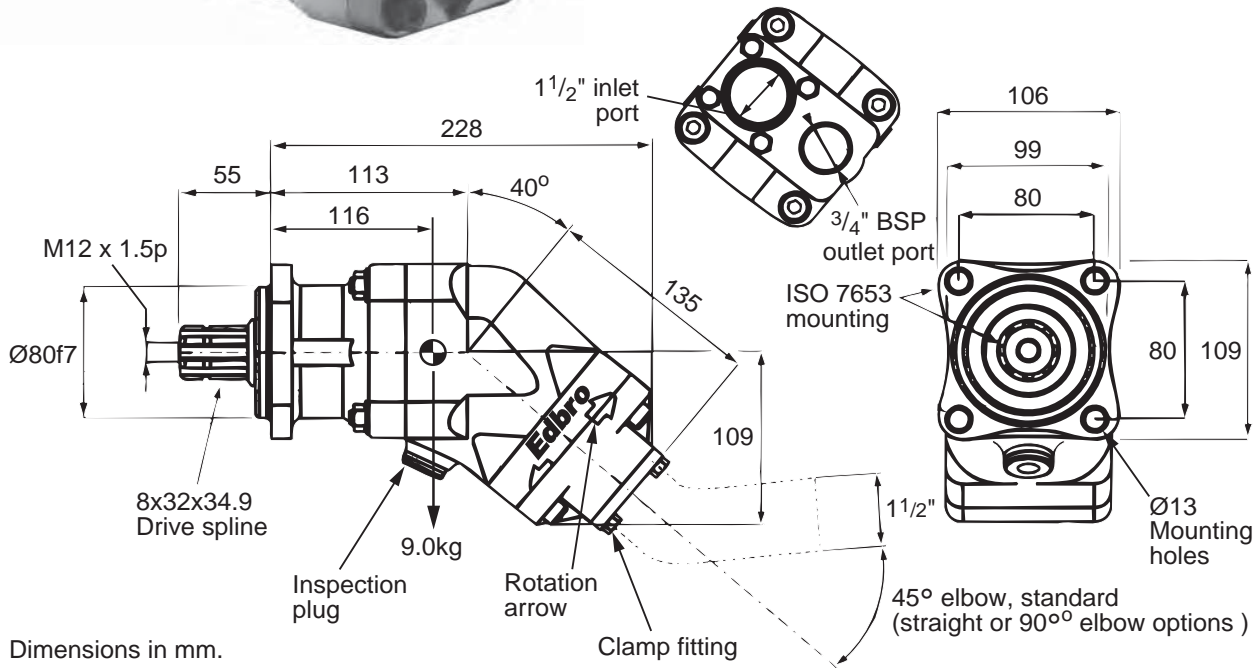


For use with Edbro 3- and 4-bolt Gear pumps

Bent Axis Piston Pump: Tipper Applications - EBA04722



- 47 cm³/rev output flow
- Medium pressure (220 bar mwp)
- Compact size for easy installation
- Ideal for close coupled PTO mounting
- Lightweight aluminium casings
- Reversible rotation whilst installed
- 4 - Hole ISO7653 Mounting flange



Dimensions in mm.

Gear and Piston Pumps

PIPE ADAPTOR KIT OPTIONS

Low pressure inlet adaptors	High pressure outlet adaptor options	
	3/4 inch BSP straight (NR611/42, DPP45F)	3/4 inch BSP 90° elbow (NR611/42, NR627, DPP45F)
1 1/2 inch push-on 45° elbow (NR1588)	AK53 (standard)	AK66
1 1/2 inch push-on 90° elbow (NR1589)	AK54	AK67
1 1/2 inch push-on straight (NR1612)	AK52	AK65

All dimensions are given in mm unless otherwise stated. Technical Specifications are subject to change without notice.

Bent Axis Piston Pump: Tipper Applications - EBA04722

PERFORMANCE

Displacement	cm ³ /rev	47
Max. Working Pressure	bar	220
Max. Working Speed	rpm	1900
Max.Speed Off-Load	rpm	2500
Power	Kw	55
Weight	kg	9.0
Moment at PTO face	Nm	10.1

OIL & FILTRATION

This pump is designed for low pressure, intermittent use, tipper systems without filtration. The oil should be a good quality hydraulic oil to ISO 6743/4 HM32 for -15° to +27° C working temperature.

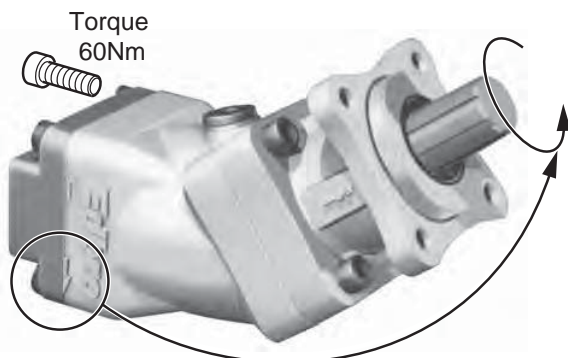
For extended life or for higher duty applications, 25mm absolute return line filtration is recommended. Oil cleanliness to be maintained to ISO 4406 class 19/16. Oil should be replaced annually.

PIPES

Size: Suction 1 1/2 inch minimum
Pressure 3/4 inch minimum

The suction pipe must be able to withstand -12psi (-0.8bar) pressure.

Pipe runs should be direct and short, with no kinks.



ROTATION DIRECTION

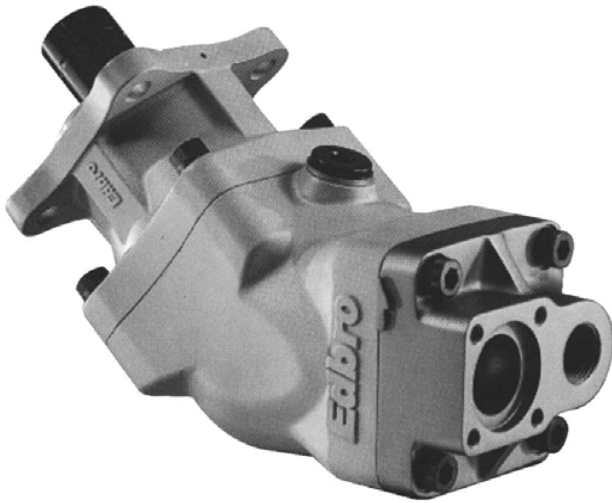
The rotation direction is shown by the complete arrows on the pump casing, and is specified as clockwise (right hand rotation) or anti-clockwise (left hand rotation), when viewed looking toward the pump along the splined shaft.

To change the rotation direction, remove the 4 setscrews and lift the end cover by a few mm.

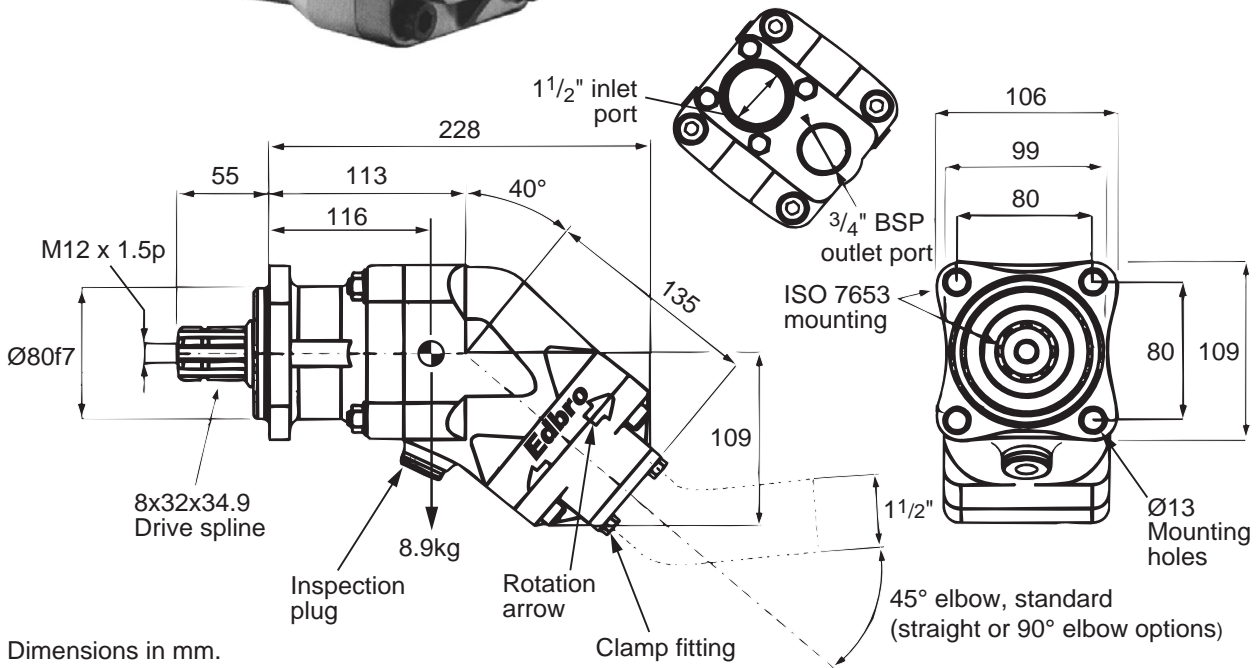
Rotate through 180° push back into place and replace the setscrews.

Unless specially requested, ANTI-CLOCKWISE configuration will be supplied.

Bent Axis Piston Pump: Tipper Applications - EBA06422



- 64 cm³/rev output flow
- Medium pressure (250 bar mwp)
- Compact size for easy installation
- Ideal for close coupled PTO mounting
- Lightweight aluminium casings
- Reversible rotation whilst installed
- 4 - Hole ISO7653 Mounting flange



Dimensions in mm.

PIPE ADAPTOR KIT OPTIONS

Low pressure inlet adaptors	High pressure outlet adaptor options	
	3/4 inch BSP straight (NR611/42, DPP45F)	3/4 inch BSP 90° elbow (NR611/42, NR627, DPP45F)
1 1/2 inch push-on 45° elbow (NR1588)	AK53 (standard)	AK66
1 1/2 inch push-on 90° elbow (NR1589)	AK54	AK67
1 1/2 inch push-on straight (NR1612)	AK52	AK65

All dimensions are given in mm unless otherwise stated. Technical Specifications are subject to change without notice.

Bent Axis Piston Pump: Tipper Applications - EBA06422

PERFORMANCE

Displacement	cm ³ /rev	64
Max. Working Pressure	bar	250
Max. Working Speed	rpm	1900
Max.Speed Off-Load	rpm	2500
Power	Kw	55
Weight	kg	9.0
Moment at PTO face	Nm	10.1

OIL & FILTRATION

This pump is designed for low pressure, intermittent use, tipper systems without filtration. The oil should be a good quality hydraulic oil

to ISO 6743/4 HM32 for -15° to +27°C working temperature.

For extended life or for higher duty applications, 25mm absolute return line filtration is recommended.

Oil cleanliness to be maintained to ISO 4406 class 19/16.

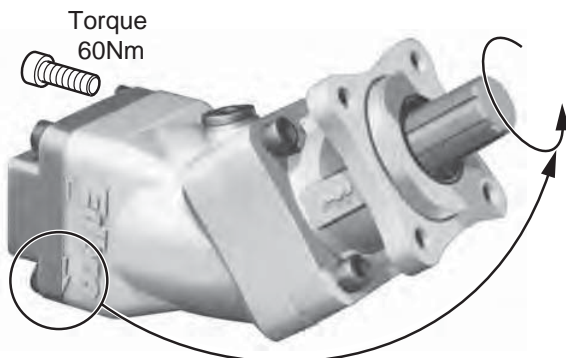
Oil should be replaced annually.

PIPES

Size: Suction 1 1/2 inch minimum
Pressure 3/4 inch minimum

The suction pipe must be able to withstand -12psi (-0.8bar) pressure.

Pipe runs should be direct and short, with no kinks.



ROTATION DIRECTION

The rotation direction is shown by the complete arrows on the pump casing, and is specified as clockwise (right hand rotation) or anti-clockwise (left hand rotation), when viewed looking toward the pump along the splined shaft.

To change the rotation direction, remove the 4 setscrews and lift the end cover by a few mm.

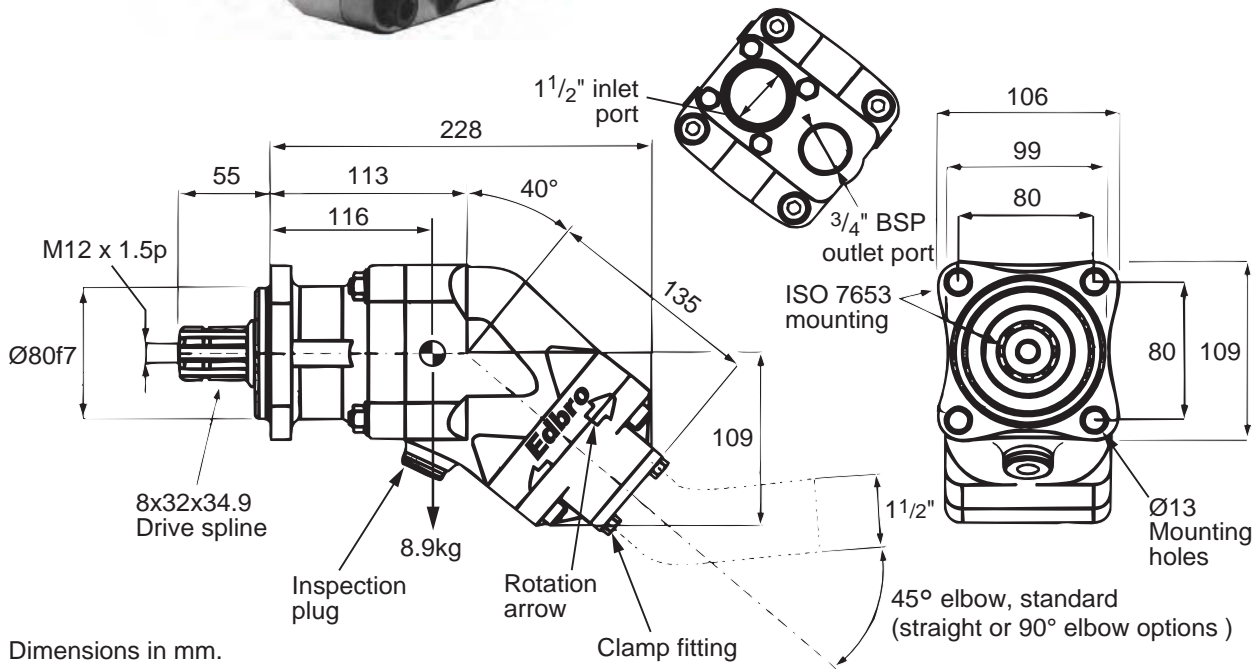
Rotate through 180° push back into place and replace the setscrews.

Unless specially requested, ANTI-CLOCKWISE configuration will be supplied.

Bent Axis Piston Pump: Tipper Applications - EBA09022



- 90 cm³/rev output flow
- Medium pressure (250 bar mwp)
- Compact size for easy installation
- Ideal for close coupled PTO mounting
- Lightweight aluminium casings
- Reversible rotation whilst installed
- 4 - Hole ISO7653 Mounting flange



Dimensions in mm.

PIPE ADAPTOR KIT OPTIONS

Low pressure inlet adaptors	High pressure outlet adaptor options	
	3/4 inch BSP straight (NR611/1, DPP45F)	3/4 inch BSP 90° elbow (NR611/1, NR627, DPP45F)
1 1/2 inch push-on 45° elbow (NR1588)	AK53 (standard)	AK66
1 1/2 inch push-on 90° elbow (NR1589)	AK54	AK67
1 1/2 inch push-on straight (NR1612)	AK52	AK65
2 inch push-on	Details available on request	

All dimensions are given in mm unless otherwise stated. Technical Specifications are subject to change without notice.

Bent Axis Piston Pump: Tipper Applications - EBA09022

PERFORMANCE

Displacement	cm ³ /rev	90
Max. Working Pressure	bar	250
Max. Working Speed	rpm	1800
Max. Speed Off-Load	rpm	2500
Power	Kw	70
Weight	kg	8.9
Moment at PTO face	Nm	10.1

PIPES

Size: Suction 1 1/2 inch minimum
Pressure 3/4 inch minimum

For improved high speed efficiency and to avoid cavitation, a 2 inch suction pipe must be used.

The suction pipe must be able to withstand -12psi (-0.8bar) pressure.

Pipe runs should be direct and short, with no kinks.

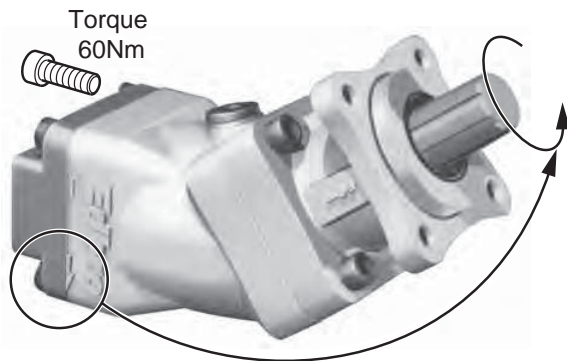
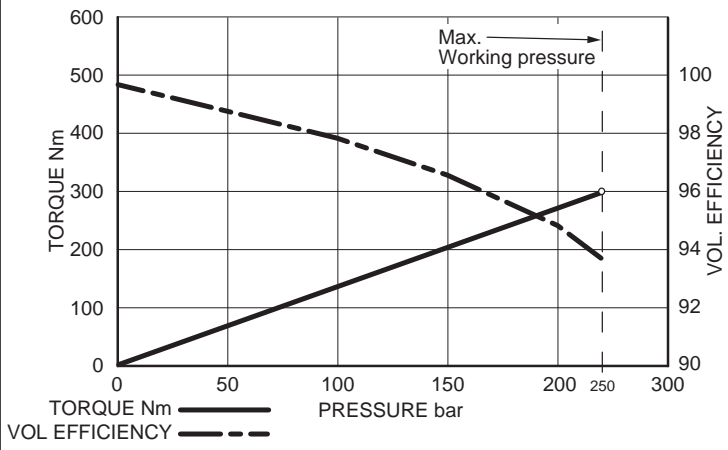
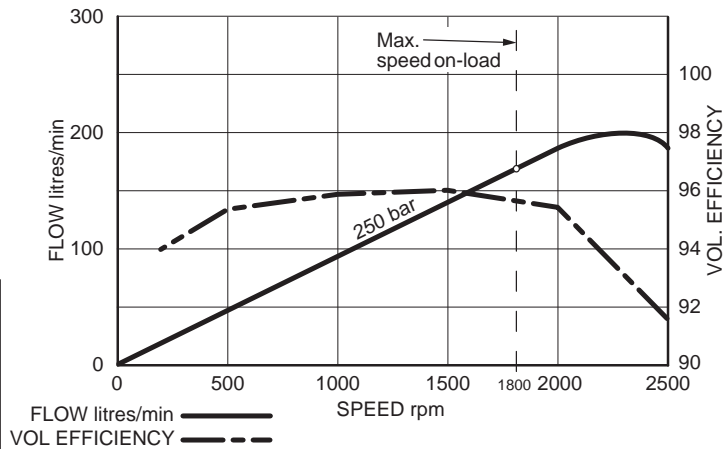
OIL & FILTRATION

This pump is designed for low pressure, intermittent use, tipper systems without filtration. The oil should be a good quality hydraulic oil to ISO 6743/4 HM32 for -15° to +27°C working temperature.

For extended life or for higher duty applications, 25µm absolute return line filtration is recommended.

Oil cleanliness to be maintained to ISO 4406 class 19/16.

Oil should be replaced annually.



ROTATION DIRECTION

The rotation direction is shown by the complete arrows on the pump casing, and is specified as clockwise (right hand rotation) or anti-clockwise (left hand rotation), when viewed looking toward the pump along the splined shaft.

To change the rotation direction, remove the 4 setscrews and lift the end cover by a few mm.

Rotate through 180° push back into place and replace the setscrews.

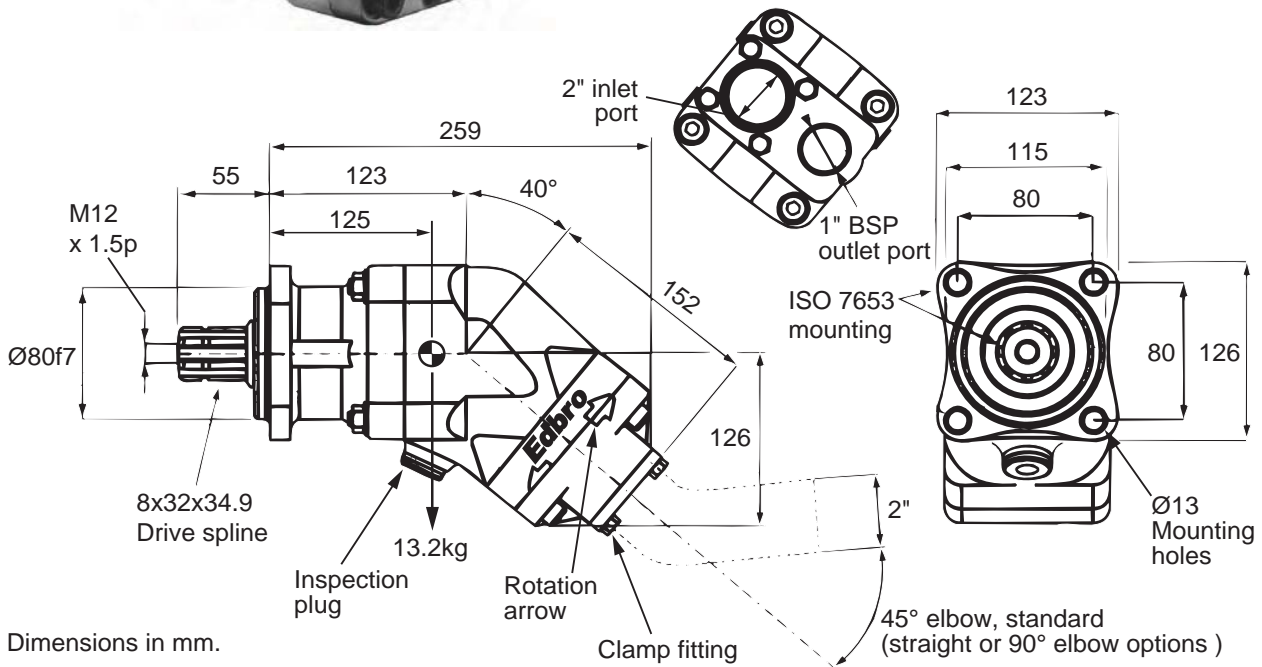
Unless specially requested, ANTI-CLOCKWISE configuration will be supplied.

All dimensions are given in mm unless otherwise stated. Technical Specifications are subject to change without notice.

Bent Axis Piston Pump: Tipper Applications - EBA13022



- 130 cm³/rev output flow
- Medium pressure (220 bar mwp)
- Compact size for easy installation
- Ideal for close coupled PTO mounting
- Lightweight aluminium casings
- Reversible rotation whilst installed
- 4 - Hole ISO7653 Mounting flange



Dimensions in mm.

PIPE ADAPTOR KIT OPTIONS

Low pressure inlet adaptors	High pressure outlet adaptor options	
	1 inch BSP straight (NR611/24, DPP45H)	1 inch BSP 90° Elbow (NR611/24, NR634, DPP45H)
2 inch push-on 45° elbow (NR1608)	AK59 (standard)	AK72
2 inch push-on 90° elbow (NR1605)	AK60	AK73
2 inch push-on straight (NR1615)	AK58	AK71
2 1/2 inch push-on	Details available on request	

All dimensions are given in mm unless otherwise stated. Technical Specifications are subject to change without notice.

Bent Axis Piston Pump: Tipper Applications - EBA13022

PERFORMANCE

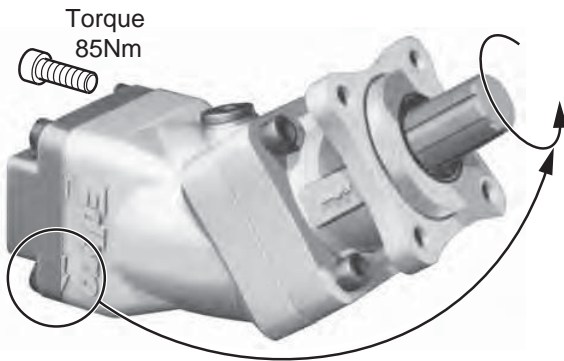
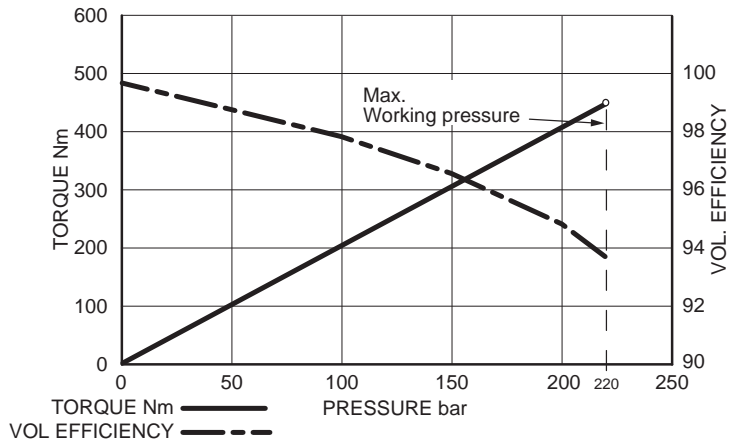
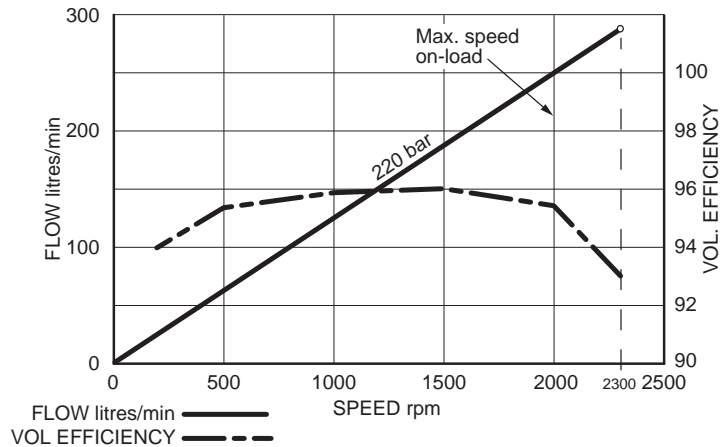
Displacement	cm ³ /rev	130
Max. Working Pressure	bar	220
Max. Working Speed	rpm	2000
Max. Speed Off-Load	rpm	2300
Power	Kw	95
Weight	kg	13.2
Moment at PTO face	Nm	16.2

PIPES

Size: Suction 2 inch minimum
Pressure 1 inch minimum
For improved high speed efficiency and to avoid cavitation, a 2 1/2 inch suction pipe must be used. The suction pipe must be able to withstand -12psi (-0.8bar) pressure. Pipe runs should be direct and short, with no kinks.

OIL & FILTRATION

This pump is designed for low pressure, intermittent use, tipper systems without filtration. The oil should be a good quality hydraulic oil to ISO 6743/4 HM32 for -15° to +27°C working temperature. For extended life or for higher duty applications, 25µm absolute return line filtration is recommended. Oil cleanliness to be maintained to ISO 4406 class 19/16. Oil should be replaced annually.



ROTATION DIRECTION

The rotation direction is shown by the complete arrows on the pump casing, and is specified as clockwise (right hand rotation) or anti-clockwise (left hand rotation), when viewed looking toward the pump along the splined shaft.

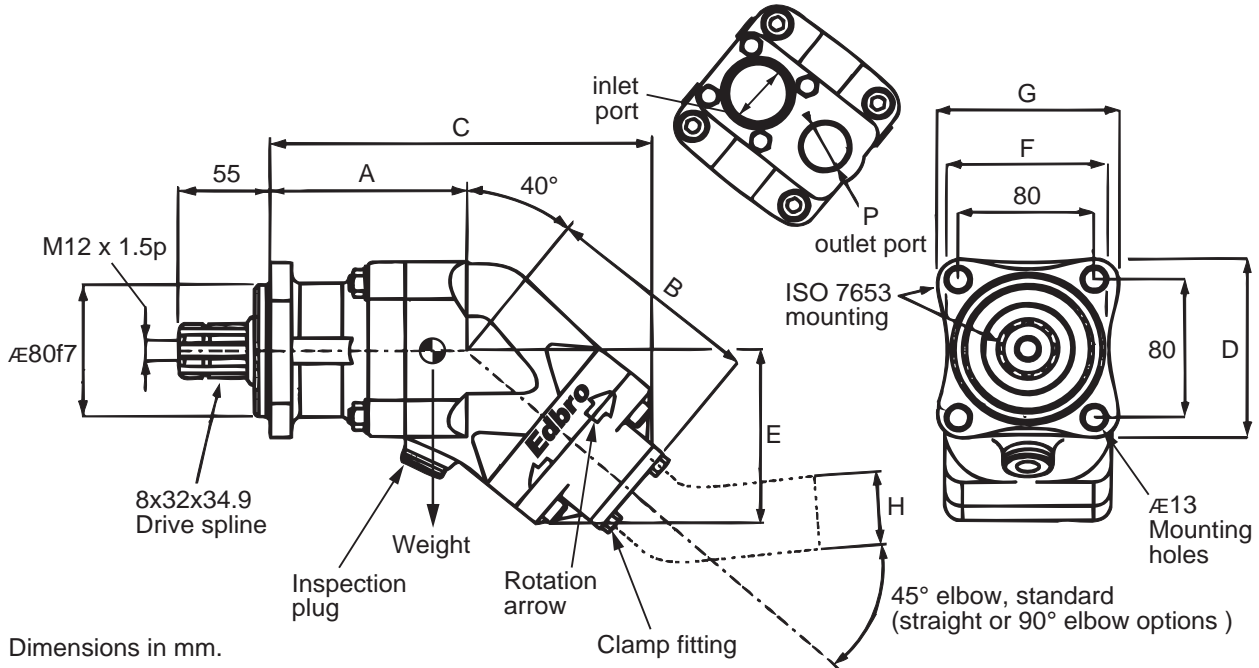
To change the rotation direction, remove the 4 setscrews and lift the end cover by a few mm.

Rotate through 180° push back into place and replace the setscrews.

Unless specially requested, ANTI-CLOCKWISE configuration will be supplied.

Bent Axis Piston Pump: Crane Applications

- 12 to 108 cm³/rev displacement
- High pressure (400 bar mwp)
- Compact size for easy installation
- Ideal for close coupled PTO mounting
- Reversible rotation whilst installed
- 4 - Hole ISO7653 Mounting flange



Dimensions in mm.

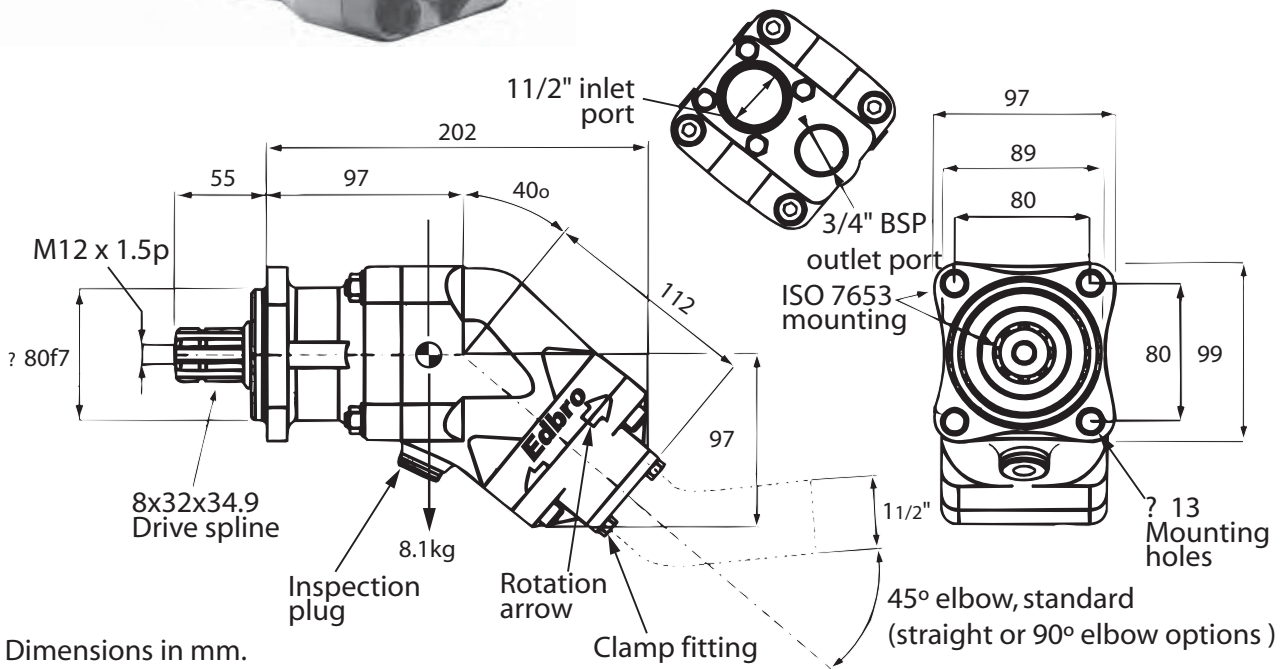
Nomenclature	Units	EBA01240	EBA01740	EBA02540	EBA03440	EBA04740	EBA06440	EBA08440	EBA10840	
Displacement	cm ³ /rev	12.6	17.0	25.4	34.2	47.1	63.6	83.6	108.0	
Nominal Flow at 1000 rpm	l/min	12.0	16.2	25.0	34.0	47.0	63.5	83.5	108.0	
Max. Pump Speed										
Continuous	RPM	2300	2300	2300	2300	1900	1900	1500	1500	
Intermittant	RPM	3000	3000	3000	3000	2500	2500	2000	2000	
Max. Working Pressure	bar	400	400	400	400	400	400	400	400	
Weight	kgs	8.1	8.1	8.1	8.1	11.7	11.7	17	17	
Dimensions	A	mm	97	97	97	97	113	113	123	123
	B		112	112	112	112	130	130	147	147
	C		202	202	202	202	228	228	259	259
	D		99	99	99	99	109	109	126	126
	E		97	97	97	97	109	109	126	126
	F		89	89	89	89	99	99	115	115
	G		97	97	97	97	106	106	123	123
	H		38	38	38	38	38	38	50	50
P	BSP	3/4"	3/4"	3/4"	3/4"	3/4"	3/4"	1"	1"	

All dimensions are given in mm unless otherwise stated. Technical Specifications are subject to change without notice.

Bent Axis Piston Pump: Crane Applications - EBA01240



- 12 cm³/rev output flow
- High pressure (400 bar mwp)
- Compact size for easy installation
- Ideal for close coupled PTO mounting
- 4 - Hole ISO7653 Mounting flange
- Reversible rotation whilst installed



Dimensions in mm.

PIPE ADAPTOR KIT OPTIONS

Low pressure inlet adaptors	High pressure outlet adaptor options	
	3/4 inch BSP straight (NR611/42, DPP45F)	3/4 inch BSP 90° elbow (NR611/42, NR627, DPP45F)
1 1/2 inch push-on 45° elbow (NR1588)	AK53 (standard)	AK66
1 1/2 inch push-on 90° elbow (NR1589)	AK54	AK67
1 1/2 inch push-on straight (NR1612)	AK52	AK65

All dimensions are given in mm unless otherwise stated. Technical Specifications are subject to change without notice.

Bent Axis Piston Pump: Crane Applications - EBA01240

PERFORMANCE

Displacement	cm ³ /rev	12
Max. Working Pressure	bar	400
Max. Working Speed	rpm	2300
Max.Speed Off-Load	rpm	3000
Power	Kw	55
Weight	kg	8.1

OIL & FILTRATION

This pump is designed for low pressure, intermittent use, tipper systems without filtration. The oil should be a good quality hydraulic oil to ISO 6743/4 HM32 for -15° to +27°C working temperature.

For extended life or for higher duty applications, 25µm absolute return line filtration is recommended.

Oil cleanliness to be maintained to ISO 4406 class 19/16.

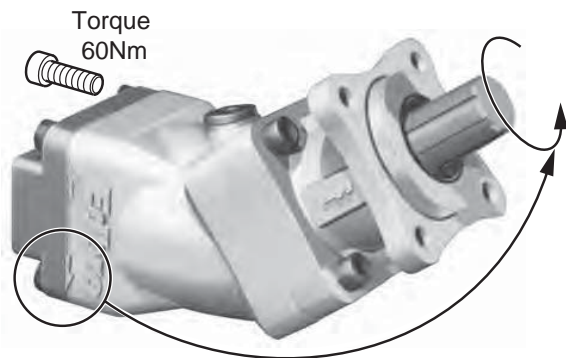
Oil should be replaced annually.

PIPES

Size: Suction 1 1/2 inch minimum
Pressure 3/4 inch minimum

The suction pipe must be able to withstand -12psi (-0.8bar) pressure.

Pipe runs should be direct and short, with no kinks.



ROTATION DIRECTION

The rotation direction is shown by the complete arrows on the pump casing, and is specified as clockwise (right hand rotation) or anti-clockwise (left hand rotation), when viewed looking toward the pump along the splined shaft.

To change the rotation direction, remove the 4 setscrews and lift the end cover by a few mm.

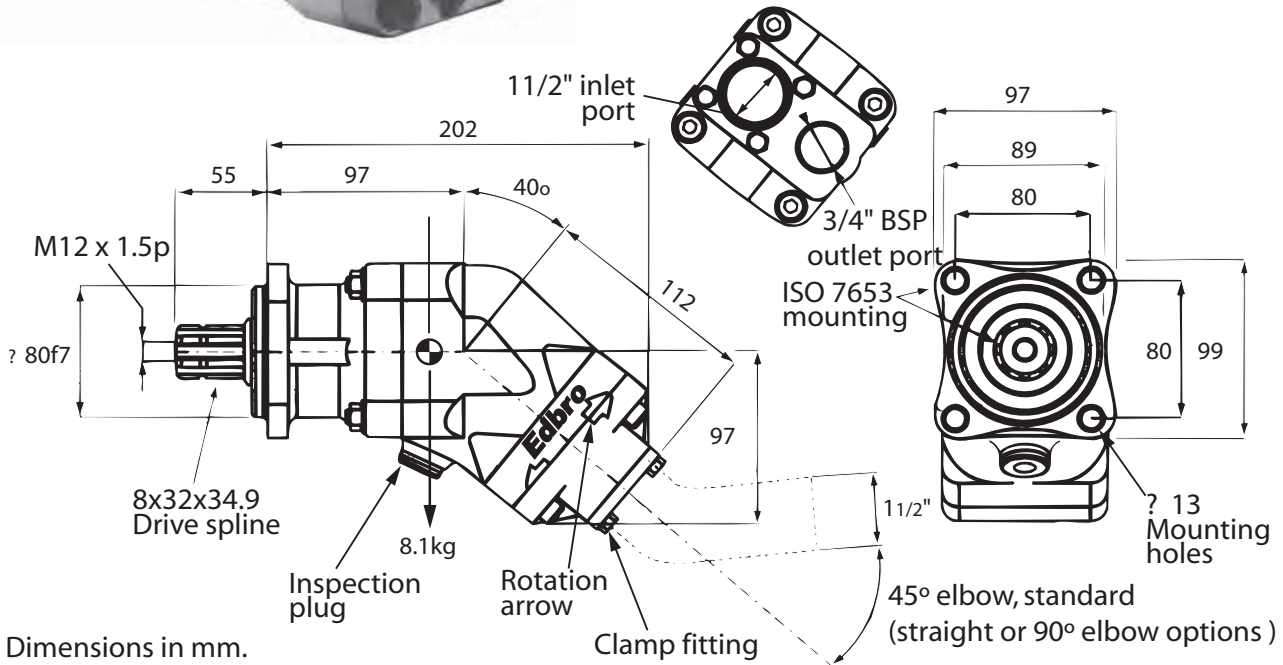
Rotate through 180° push back into place and replace the setscrews.

Unless specially requested, ANTI-CLOCKWISE configuration will be supplied.

Bent Axis Piston Pump: Crane Applications - EBA01740



- 17 cm³/rev output flow
- High pressure (400 bar mwp)
- Compact size for easy installation
- Ideal for close coupled PTO mounting
- 4 - Hole ISO7653 Mounting flange
- Reversible rotation whilst installed



PIPE ADAPTOR KIT OPTIONS

Low pressure inlet adaptors	High pressure outlet adaptor options	
	3/4 inch BSP straight (NR611/42, DPP45F)	3/4 inch BSP 90° elbow (NR611/42, NR627, DPP45F)
11/2 inch push-on 45° elbow (NR1588)	AK53 (standard)	AK66
11/2 inch push-on 90° elbow (NR1589)	AK54	AK67
11/2 inch push-on straight (NR1612)	AK52	AK65

All dimensions are given in mm unless otherwise stated. Technical Specifications are subject to change without notice.

Bent Axis Piston Pump: Crane Applications - EBA01740

PERFORMANCE

Displacement	cm ³ /rev	17
Max. Working Pressure	bar	400
Max. Working Speed	rpm	2300
Max. Speed Off-Load	rpm	3000
Power	Kw	55
Weight	kg	8.1

OIL & FILTRATION

This pump is designed for low pressure, intermittent use, tipper systems without filtration. The oil should be a good quality hydraulic oil to ISO 6743/4 HM32 for -15° to +27°C working temperature.

For extended life or for higher duty applications, 25µm absolute return line filtration is recommended.

Oil cleanliness to be maintained to ISO 4406 class 19/16.

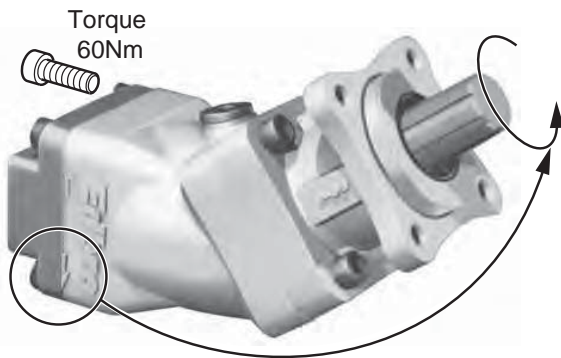
Oil should be replaced annually.

PIPES

Size: Suction 1 1/2 inch minimum
Pressure 3/4 inch minimum

The suction pipe must be able to withstand -12psi (-0.8bar) pressure.

Pipe runs should be direct and short, with no kinks.



ROTATION DIRECTION

The rotation direction is shown by the complete arrows on the pump casing, and is specified as clockwise (right hand rotation) or anti-clockwise (left hand rotation), when viewed looking toward the pump along the splined shaft.

To change the rotation direction, remove the 4 setscrews and lift the end cover by a few mm.

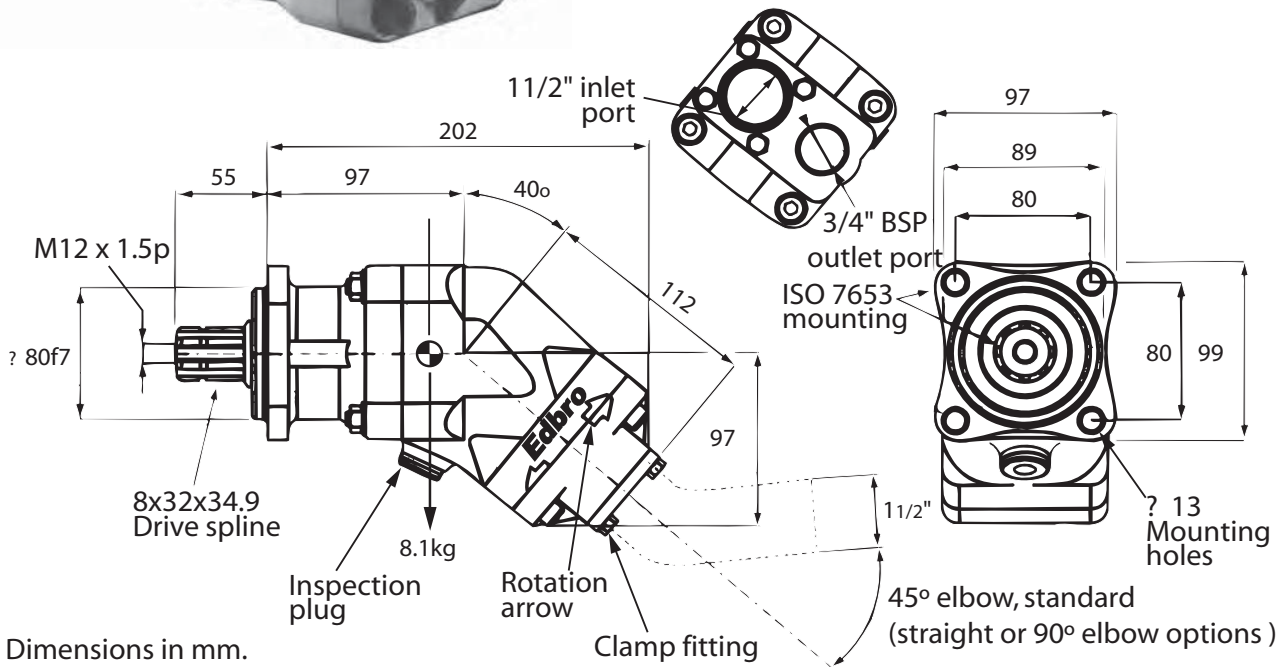
Rotate through 180° push back into place and replace the setscrews.

Unless specially requested, ANTI-CLOCKWISE configuration will be supplied.

Bent Axis Piston Pump: Crane Applications - EBA02540



- 25 cm³/rev output flow
- High pressure (400 bar mwp)
- Compact size for easy installation
- Ideal for close coupled PTO mounting
- 4 - Hole ISO7653 Mounting flange
- Reversible rotation whilst installed



Dimensions in mm.

PIPE ADAPTOR KIT OPTIONS

Low pressure inlet adaptors	High pressure outlet adaptor options	
	3/4 inch BSP straight (NR611/42, DPP45F)	3/4 inch BSP 90° elbow (NR611/42, NR627, DPP45F)
1 1/2 inch push-on 45° elbow (NR1588)	AK53 (standard)	AK66
1 1/2 inch push-on 90° elbow (NR1589)	AK54	AK67
1 1/2 inch push-on straight (NR1612)	AK52	AK65

All dimensions are given in mm unless otherwise stated. Technical Specifications are subject to change without notice.

Bent Axis Piston Pump: Crane Applications - EBA02540

PERFORMANCE

Displacement	cm ³ /rev	25
Max. Working Pressure	bar	400
Max. Working Speed	rpm	2300
Max. Speed Off-Load	rpm	3000
Power	Kw	55
Weight	kg	8.1

OIL & FILTRATION

This pump is designed for low pressure, intermittent use, tipper systems without filtration. The oil should be a good quality hydraulic oil to ISO 6743/4 HM32 for -15° to +27°C working temperature.

For extended life or for higher duty applications, 25µm absolute return line filtration is recommended.

Oil cleanliness to be maintained to ISO 4406 class 19/16.

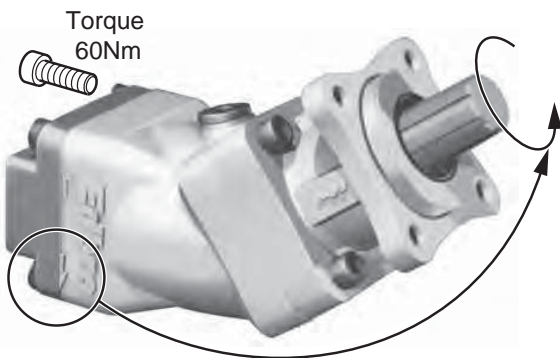
Oil should be replaced annually.

PIPES

Size: Suction 1 1/2 inch minimum
Pressure 3/4 inch minimum

The suction pipe must be able to withstand -12psi (-0.8bar) pressure.

Pipe runs should be direct and short, with no kinks.



ROTATION DIRECTION

The rotation direction is shown by the complete arrows on the pump casing, and is specified as clockwise (right hand rotation) or anti-clockwise (left hand rotation), when viewed looking toward the pump along the splined shaft.

To change the rotation direction, remove the 4 setscrews and lift the end cover by a few mm.

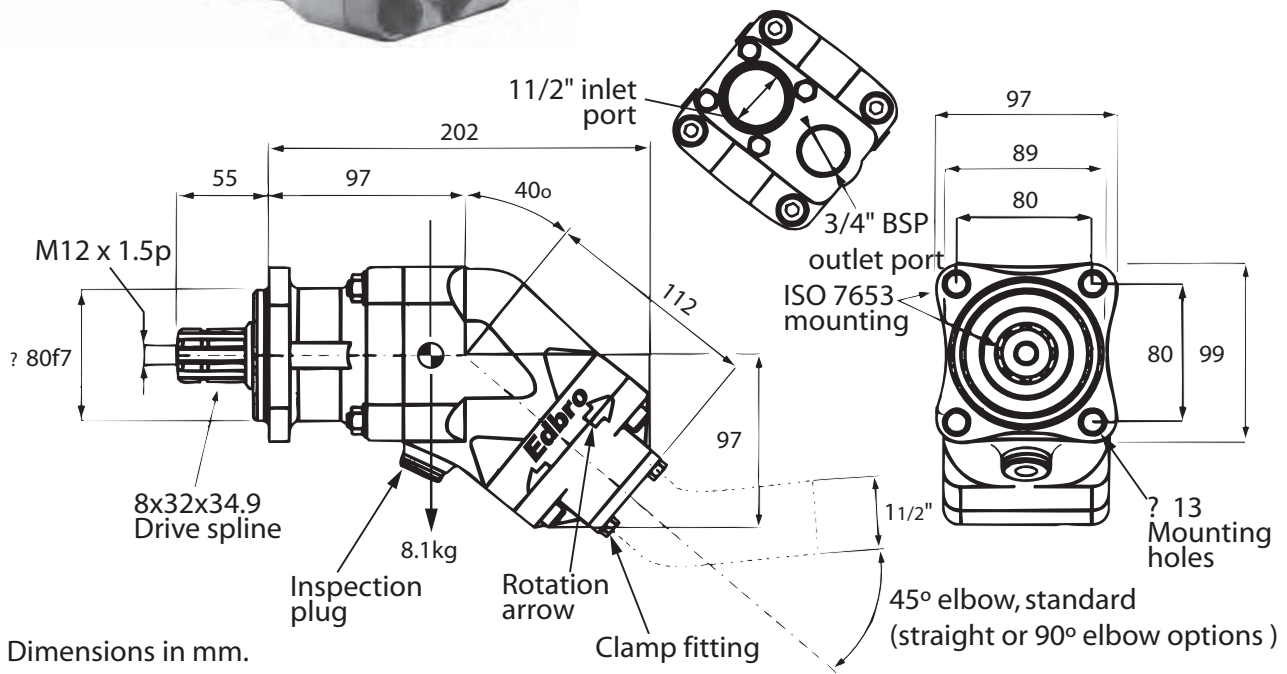
Rotate through 180° push back into place and replace the setscrews.

Unless specially requested, ANTI-CLOCKWISE configuration will be supplied.

Bent Axis Piston Pump: Crane Applications - EBA03440



- 34 cm³/rev output flow
- High pressure (400 bar mwp)
- Compact size for easy installation
- Ideal for close coupled PTO mounting
- 4 - Hole ISO7653 Mounting flange
- Reversible rotation whilst installed



PIPE ADAPTOR KIT OPTIONS

Low pressure inlet adaptors	High pressure outlet adaptor options	
	3/4 inch BSP straight (NR611/42, DPP45F)	3/4 inch BSP 90° elbow (NR611/42, NR627, DPP45F)
11/2 inch push-on 45° elbow (NR1588)	AK53 (standard)	AK66
11/2 inch push-on 90° elbow (NR1589)	AK54	AK67
11/2 inch push-on straight (NR1612)	AK52	AK65

All dimensions are given in mm unless otherwise stated. Technical Specifications are subject to change without notice.

Bent Axis Piston Pump: Crane Applications - EBA03440

PERFORMANCE

Displacement	cm ³ /rev	34
Max. Working Pressure	bar	400
Max. Working Speed	rpm	2300
Max. Speed Off-Load	rpm	3000
Power	Kw	55
Weight	kg	8.1

OIL & FILTRATION

This pump is designed for low pressure, intermittent use, tipper systems without filtration.

The oil should be a good quality hydraulic oil to ISO 6743/4 HM32 for -15° to +27°C working temperature.

For extended life or for higher duty applications, 25µm absolute return line filtration is recommended.

Oil cleanliness to be maintained to ISO 4406 class 19/16.

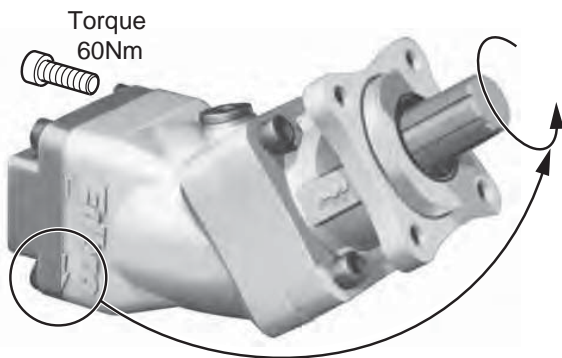
Oil should be replaced annually.

PIPES

Size: Suction 1 1/2 inch minimum
Pressure 3/4 inch minimum

The suction pipe must be able to withstand -12psi (-0.8bar) pressure.

Pipe runs should be direct and short, with no kinks.



ROTATION DIRECTION

The rotation direction is shown by the complete arrows on the pump casing, and is specified as clockwise (right hand rotation) or anti-clockwise (left hand rotation), when viewed looking toward the pump along the splined shaft.

To change the rotation direction, remove the 4 setscrews and lift the end cover by a few mm.

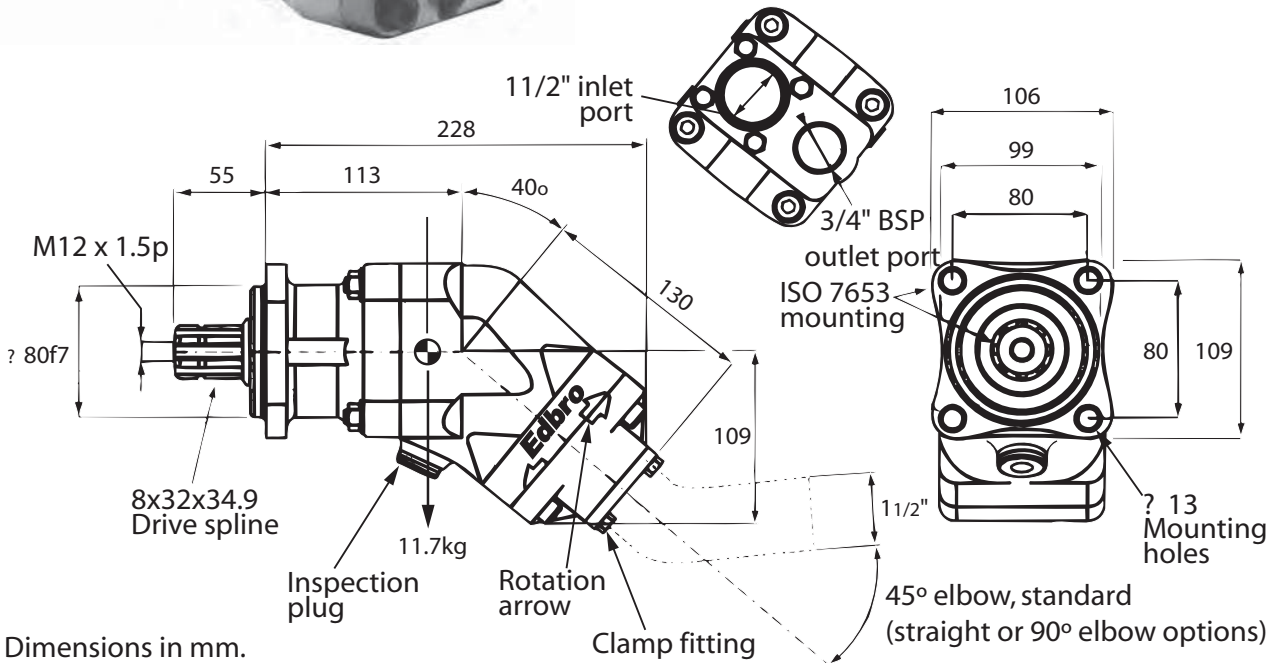
Rotate through 180° push back into place and replace the setscrews.

Unless specially requested, ANTI-CLOCKWISE configuration will be supplied.

Bent Axis Piston Pump: Crane Applications - EBA04740



- 47 cm³/rev output flow
- High pressure (400 bar mwp)
- Compact size for easy installation
- Ideal for close coupled PTO mounting
- 4 - Hole ISO7653 Mounting flange
- Reversible rotation whilst installed



Dimensions in mm.

PIPE ADAPTOR KIT OPTIONS

Low pressure inlet adaptors	High pressure outlet adaptor options	
	3/4 inch BSP straight (NR611/42, DPP45F)	3/4 inch BSP 90° elbow (NR611/42, NR627, DPP45F)
11/2 inch push-on 45° elbow (NR1588)	AK53 (standard)	AK66
11/2 inch push-on 90° elbow (NR1589)	AK54	AK67
11/2 inch push-on straight (NR1612)	AK52	AK65

All dimensions are given in mm unless otherwise stated. Technical Specifications are subject to change without notice.

Bent Axis Piston Pump: Crane Applications - EBA04740

PERFORMANCE

Displacement	cm ³ /rev	47
Max. Working Pressure	bar	400
Max. Working Speed	rpm	1900
Max.Speed Off-Load	rpm	2500
Power	Kw	55
Weight	kg	11.7

OIL & FILTRATION

This pump is designed for low pressure, intermittent use, tipper systems without filtration. The oil should be a good quality hydraulic oil to ISO 6743/4 HM32 for -15° to +27°C working temperature.

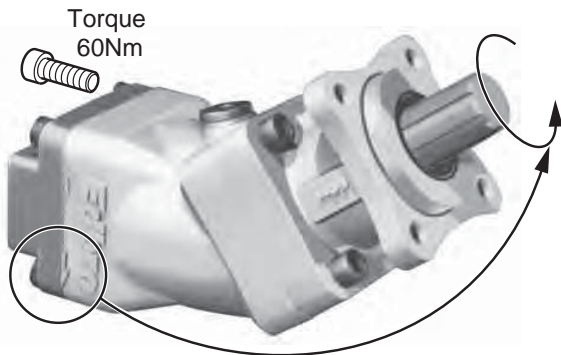
For extended life or for higher duty applications, 25µm absolute return line filtration is recommended. Oil cleanliness to be maintained to ISO 4406 class 19/16. Oil should be replaced annually.

PIPES

Size: Suction 1 1/2 inch minimum
Pressure 3/4 inch minimum

The suction pipe must be able to withstand -12psi (-0.8bar) pressure.

Pipe runs should be direct and short, with no kinks.



ROTATION DIRECTION

The rotation direction is shown by the complete arrows on the pump casing, and is specified as clockwise (right hand rotation) or anti-clockwise (left hand rotation), when viewed looking toward the pump along the splined shaft.

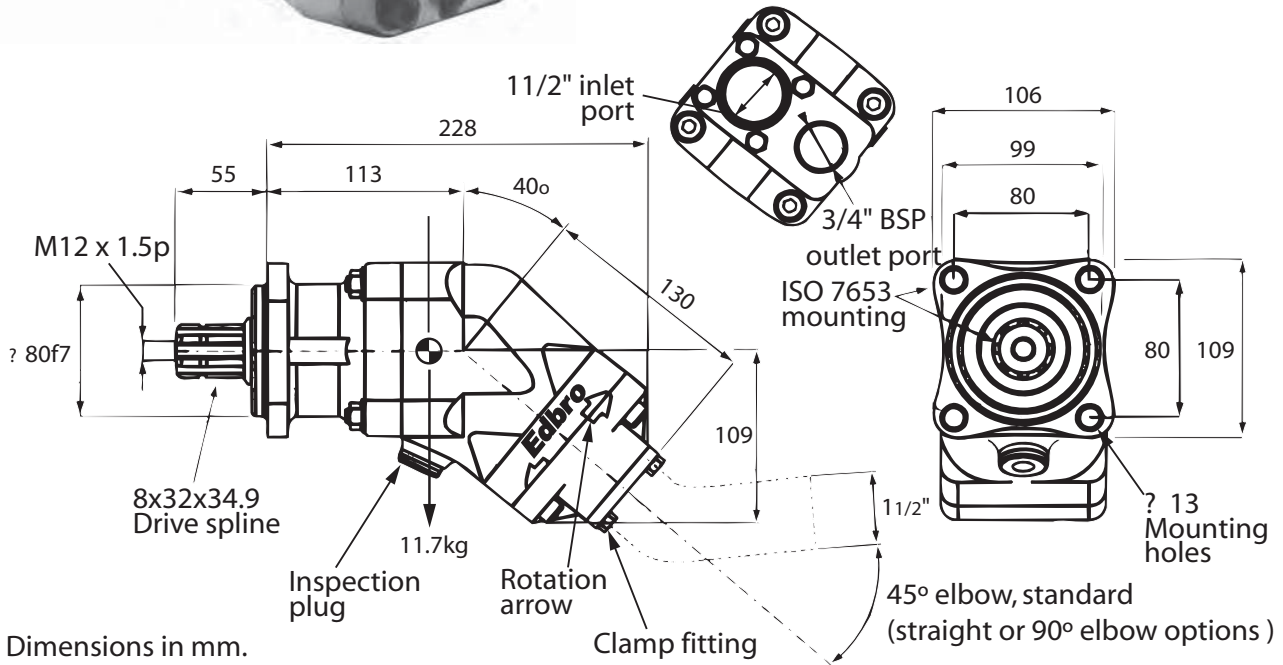
To change the rotation direction, remove the 4 setscrews and lift the end cover by a few mm. Rotate through 180° push back into place and replace the setscrews.

Unless specially requested, ANTI-CLOCKWISE configuration will be supplied.

Bent Axis Piston Pump: Crane Applications - EBA06440



- 64 cm³/rev output flow
- High pressure (400 bar mwp)
- Compact size for easy installation
- Ideal for close coupled PTO mounting
- 4 - Hole ISO7653 Mounting flange
- Reversible rotation whilst installed



PIPE ADAPTOR KIT OPTIONS

Low pressure inlet adaptors	High pressure outlet adaptor options	
	3/4 inch BSP straight (NR611/42, DPP45F)	3/4 inch BSP 90° elbow (NR611/42, NR627, DPP45F)
1 1/2 inch push-on 45° elbow (NR1588)	AK53 (standard)	AK66
1 1/2 inch push-on 90° elbow (NR1589)	AK54	AK67
1 1/2 inch push-on straight (NR1612)	AK52	AK65

All dimensions are given in mm unless otherwise stated. Technical Specifications are subject to change without notice.

Bent Axis Piston Pump: Crane Applications - EBA06440

PERFORMANCE

Displacement	cm ³ /rev	64
Max. Working Pressure	bar	400
Max. Working Speed	rpm	1900
Max.Speed Off-Load	rpm	2500
Power	Kw	55
Weight	kg	11.7

OIL & FILTRATION

This pump is designed for low pressure, intermittent use, tipper systems without filtration. The oil should be a good quality hydraulic oil to ISO 6743/4 HM32 for -15° to +27°C working temperature.

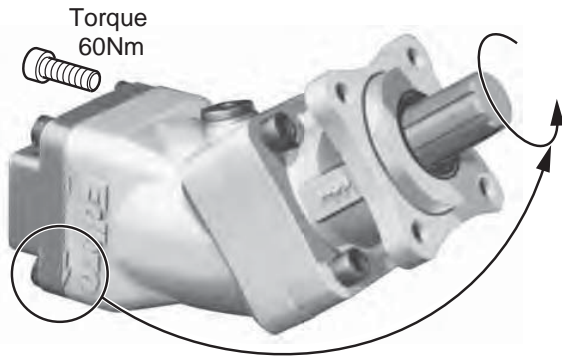
For extended life or for higher duty applications, 25µm absolute return line filtration is recommended. Oil cleanliness to be maintained to ISO 4406 class 19/16. Oil should be replaced annually.

PIPES

Size: Suction 1 1/2 inch minimum
Pressure 3/4 inch minimum

The suction pipe must be able to withstand -12psi (-0.8bar) pressure.

Pipe runs should be direct and short, with no kinks.



ROTATION DIRECTION

The rotation direction is shown by the complete arrows on the pump casing, and is specified as clockwise (right hand rotation) or anti-clockwise (left hand rotation), when viewed looking toward the pump along the splined shaft.

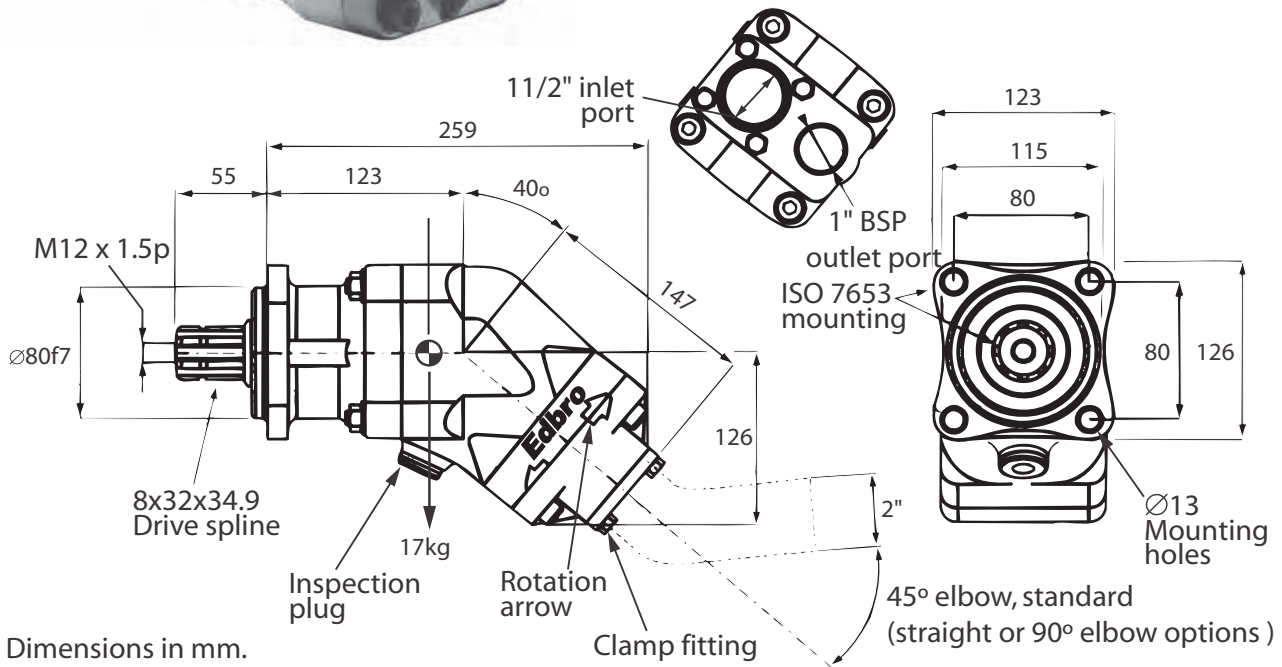
To change the rotation direction, remove the 4 setscrews and lift the end cover by a few mm. Rotate through 180° push back into place and replace the setscrews.

Unless specially requested, ANTI-CLOCKWISE configuration will be supplied.

Bent Axis Piston Pump: Crane Applications - EBA08440



- 84 cm³/rev output flow
- High pressure (400 bar mwp)
- Compact size for easy installation
- Ideal for close coupled PTO mounting
- 4 - Hole ISO7653 Mounting flange
- Reversible rotation whilst installed



PIPE ADAPTOR KIT OPTIONS

Low pressure inlet adaptors	High pressure outlet adaptor options	
	1 inch BSP straight (NR611/22, DPP45H)	1 inch BSP 90° elbow (NR611/24, NR634, DPP45H)
2 inch push-on 45° elbow (NR1608)	AK59 (standard)	AK72
2 inch push-on 90° elbow (NR1605)	AK60	AK73
2 inch push-on straight (NR1615)	AK58	AK71

All dimensions are given in mm unless otherwise stated. Technical Specifications are subject to change without notice.

Bent Axis Piston Pump: Crane Applications - EBA08440

PERFORMANCE

Displacement	cm ³ /rev	84
Max. Working Pressure	bar	400
Max. Working Speed	rpm	1500
Max.Speed Off-Load	rpm	2000
Power	Kw	55
Weight	kg	17

OIL & FILTRATION

This pump is designed for low pressure, intermittent use, tipper systems without filtration. The oil should be a good quality hydraulic oil to ISO 6743/4 HM32 for -15° to +27°C working temperature.

For extended life or for higher duty applications, 25µm absolute return line filtration is recommended.

Oil cleanliness to be maintained to ISO 4406 class 19/16.

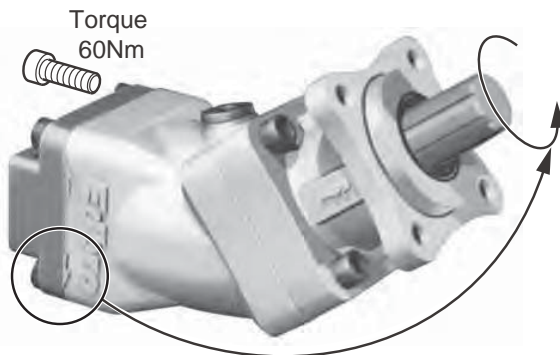
Oil should be replaced annually.

PIPES

Size: Suction 1 1/2 inch minimum
Pressure 3/4 inch minimum

The suction pipe must be able to withstand -12psi (-0.8bar) pressure.

Pipe runs should be direct and short, with no kinks.



ROTATION DIRECTION

The rotation direction is shown by the complete arrows on the pump casing, and is specified as clockwise (right hand rotation) or anti-clockwise (left hand rotation), when viewed looking toward the pump along the splined shaft.

To change the rotation direction, remove the 4 setscrews and lift the end cover by a few mm.

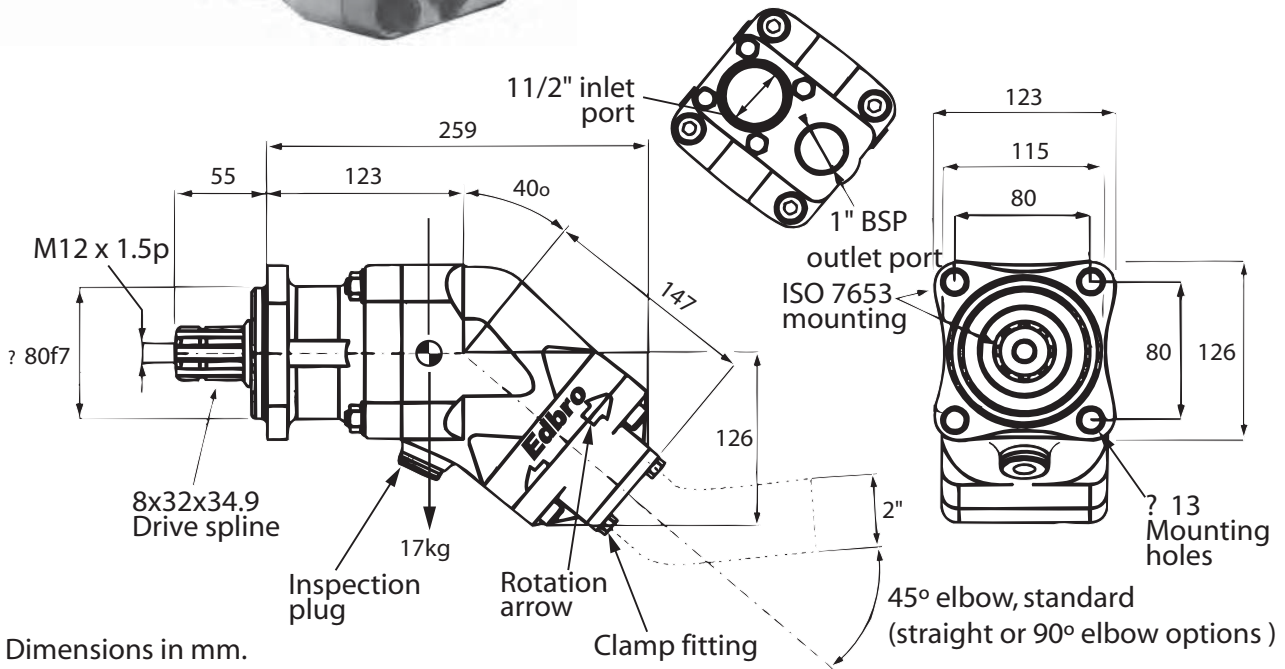
Rotate through 180° push back into place and replace the setscrews.

Unless specially requested, ANTI-CLOCKWISE configuration will be supplied.

Bent Axis Piston Pump: Crane Applications - EBA10840



- 108 cm³/rev output flow
- High pressure (400 bar mwp)
- Compact size for easy installation
- Ideal for close coupled PTO mounting
- 4 - Hole ISO7653 Mounting flange
- Reversible rotation whilst installed



Dimensions in mm.

PIPE ADAPTOR KIT OPTIONS

Low pressure inlet adaptors	High pressure outlet adaptor options	
	1 inch BSP straight (NR611/22, DPP45H)	1 inch BSP 90° elbow (NR611/24, NR634, DPP45H)
2 inch push-on 45° elbow (NR1608)	AK59 (standard)	AK72
2 inch push-on 90° elbow (NR1605)	AK60	AK73
2 inch push-on straight (NR1615)	AK58	AK71

All dimensions are given in mm unless otherwise stated. Technical Specifications are subject to change without notice.

Bent Axis Piston Pump: Crane Applications - EBA10840

PERFORMANCE

Displacement	cm ³ /rev	108
Max. Working Pressure	bar	400
Max. Working Speed	rpm	1500
Max.Speed Off-Load	rpm	2000
Power	Kw	55
Weight	kg	17

OIL & FILTRATION

This pump is designed for low pressure, intermittent use, tipper systems without filtration. The oil should be a good quality hydraulic oil to ISO 6743/4 HM32 for -15° to +27°C working temperature.

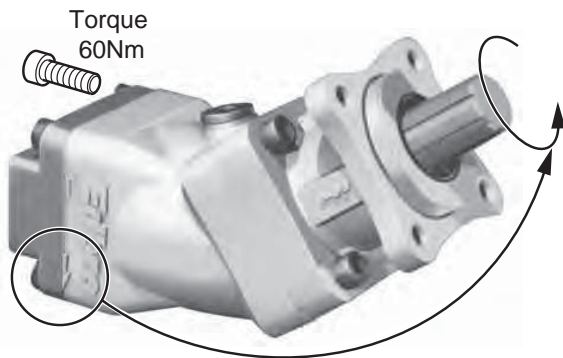
For extended life or for higher duty applications, 25µm absolute return line filtration is recommended. Oil cleanliness to be maintained to ISO 4406 class 19/16. Oil should be replaced annually.

PIPES

Size: Suction 1½ inch minimum
Pressure ¾ inch minimum

The suction pipe must be able to withstand -12psi (-0.8bar) pressure.

Pipe runs should be direct and short, with no kinks.



ROTATION DIRECTION

The rotation direction is shown by the complete arrows on the pump casing, and is specified as clockwise (right hand rotation) or anti-clockwise (left hand rotation), when viewed looking toward the pump along the splined shaft.

To change the rotation direction, remove the 4 setscrews and lift the end cover by a few mm.

Rotate through 180° push back into place and replace the setscrews.

Unless specially requested, ANTI-CLOCKWISE configuration will be supplied.