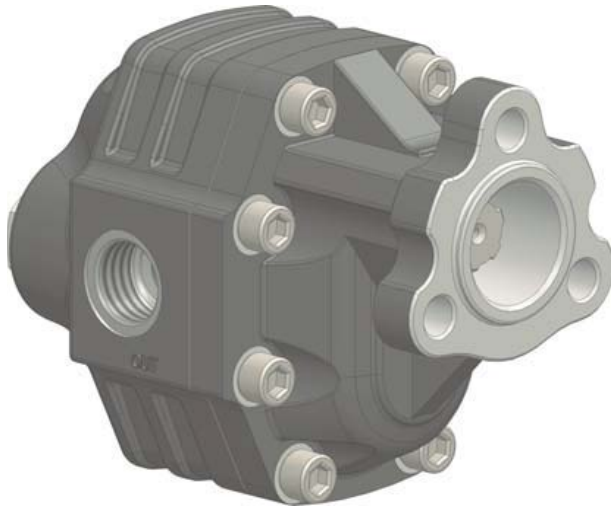
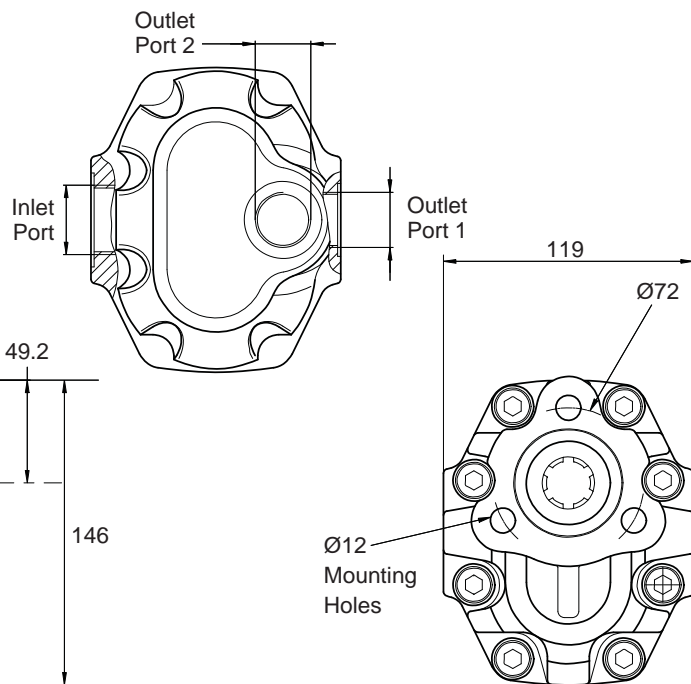
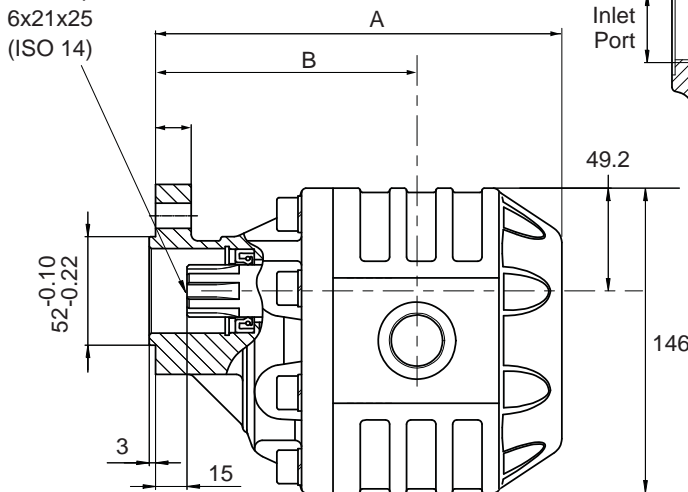


Gear Pump: Tipper Applications



- A range of flows from 17 to 125 cm³/rev
- Compact size for easy installation
- Ideal for close coupled PTO mounting
- 3 - Hole UNI Mounting flange
- Bronze thrust plates for maximum durability
- Available anti-clockwise (left) or clockwise (right) rotation
- Optional output port

Drive Spline
6x21x25
(ISO 14)



Part Number		IN	OUT 1	OUT 2	A	B	Weight
Rotation Left	Rotation Right						
		ISO 228	ISO 228	ISO 228	mm	mm	Kg
EGP017315 3H	EGP017315C 3H	1/2 inch BSP	1/2 inch BSP		152.5	103.5	8.5
EGP027315 3H	EGP027315C 3H				158.5	108	9.5
EGP034300 3H	EGP034300C 3H	3/4 inch BSP	3/4 inch BSP		163.5	109	10.5
EGP043290 3H	EGP043290C 3H				169.5	114	11
EGP061240 3H	EGP061240C 3H	1 inch BSP	1 inch BSP		180.5	120.5	12
EGP082210 3H	EGP082210C 3H	193.5			124.5	13	
EGP100200 3H	EGP100200C 3H	1 1/4 inch BSP	1 inch BSP	3/4 inch BSP	210.5	138.5	14
EGP125180 3H	EGP125180C 3H		226.5	142.5	16		

All dimensions are given in mm unless otherwise stated. Technical Specifications are subject to change without notice.

Gear Pump: Tipper Applications

TECHNICAL FEATURES						
Part Number	Displacement ³/rev cm	Pressure		Max. continuous speed rpm	Max. intermittent speed rpm	Min. speed rpm
		P1 bar	P2 bar			
EGP017315/C 3H	17	315	325	2500	3000	300
EGP027315/C 3H	26					
EGP034300/C 3H	34	300	310	2200	2800	
EGP043290/C 3H	43	290	300	2000	2500	
EGP061240/C 3H	60	240	250	1800	2000	
EGP082210/C 3H	81	210	220	1500	1800	
EGP100200/C 3H	98	200	220			
EGP125180/C 3H	123	180	200			

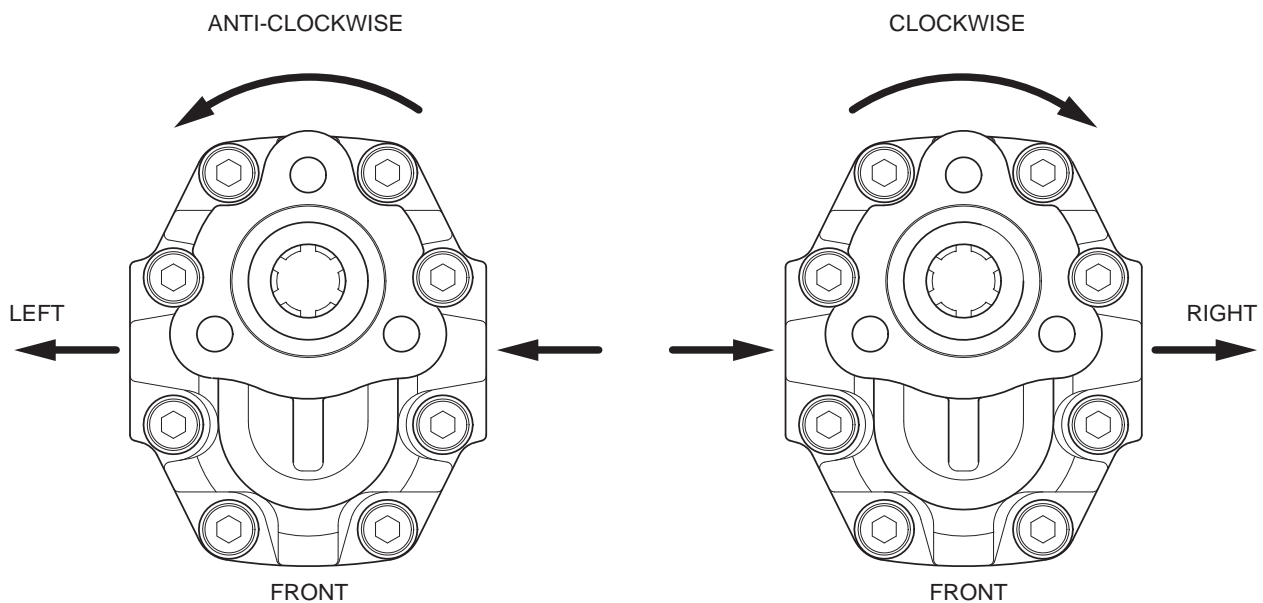
P1= Max. Intermittent pressure (20 sec. max.)

P2= Max. peak pressure (6 sec. max.)

OIL & FILTRATION

- The EGP range is designed primarily for use on tipper applications without filtration.
- The oil should be a good quality hydraulic oil to ISO 6743/4 HM32 for -15° to +27°C working temperature.
- For extended life or for higher duty applications, 25µm absolute return line filtration is recommended.
- Oil cleanliness to be maintained to ISO 4406 class 19/16.
- Oil should be replaced annually.

PUMP ROTATION



- Pumps can be supplied to suit the rotation required
- If rotation is to be reversed, refer to instructions supplied with the kit

All dimensions are given in mm unless otherwise stated. Technical Specifications are subject to change without notice.